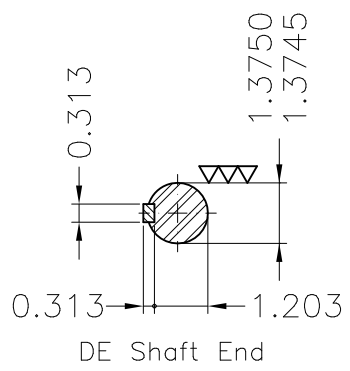
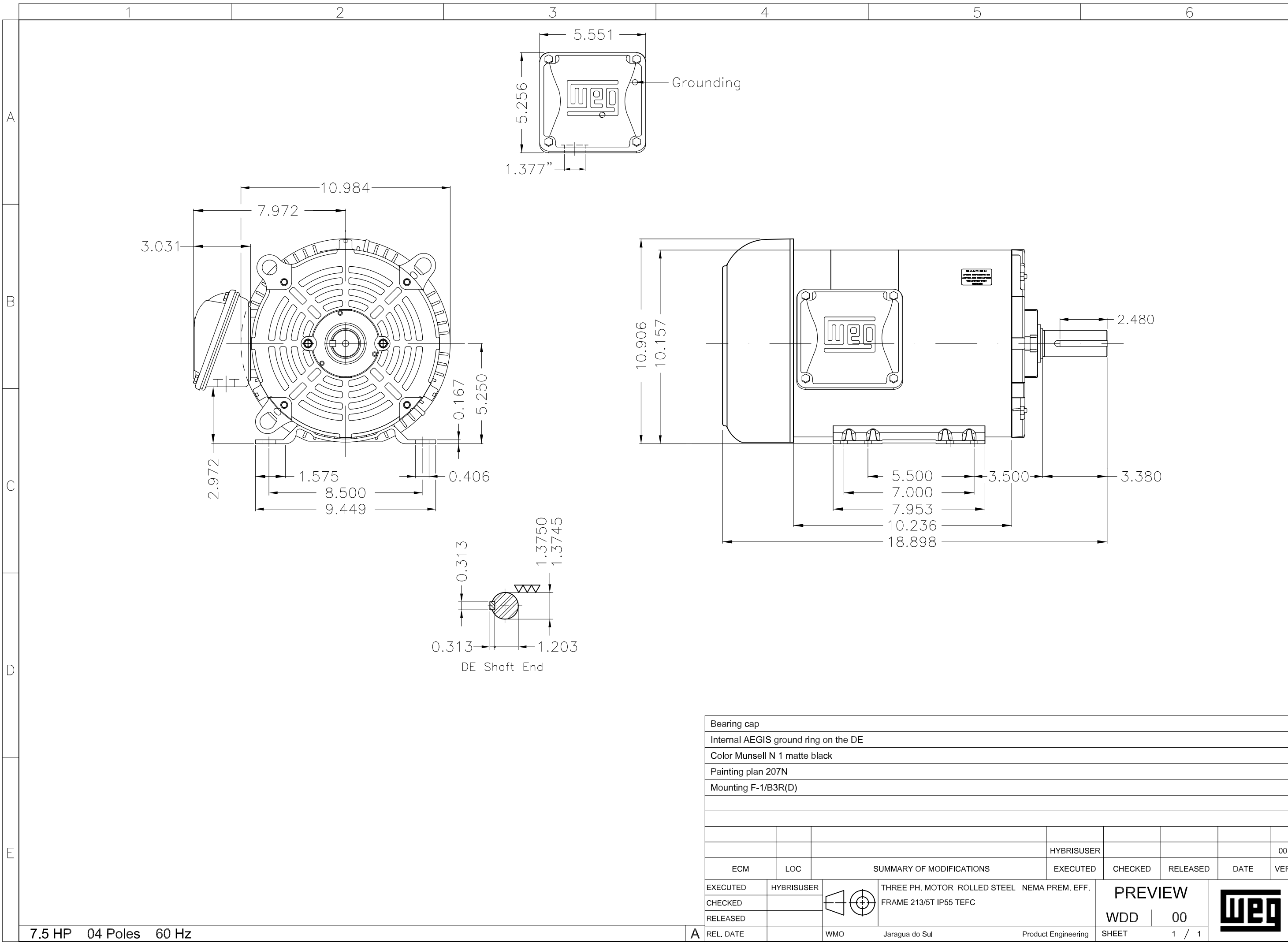


DATA SHEET



Three Phase Induction Motor - Squirrel Cage

Customer :					
Product line : ROLLED STEEL		Product code : 12674985			
		Catalog # : 00718ET3E213T-SG			
Frame : 213/5T Output : 7.5 HP (5.5 kW) Poles : 4 Frequency : 60 Hz Rated voltage : 230/460 V Rated current : 18.4/9.18 A L. R. Amperes : 134/67.0 A LRC : 7.3x(Code J) No load current : 8.81/4.41 A Rated speed : 1770 rpm Slip : 1.67 % Rated torque : 3.08 kgfm Locked rotor torque : 260 % Breakdown torque : 300 % Insulation class : F Service factor : 1.15 Moment of inertia (J) : 0.0395 kgm ² Design : B		Locked rotor time : 32s (cold) 18s (hot) Temperature rise : 80 K Duty cycle : Cont.(S1) Ambient temperature : -20°C to +40°C Altitude : 1000 m.a.s.l. Protection degree : IP55 Cooling method : IC411 - TEFC Mounting : F-1 Rotation ¹ : Both (CW and CCW) Noise level ² : 60.0 dB(A) Starting method : Direct On Line Approx. weight ³ : 53.4 kg			
Output	25%	50%	75%	100%	
Efficiency (%)	89.4	90.2	91.0	91.7	
Power Factor	0.39	0.64	0.76	0.82	
Foundation loads					
Max. traction : 179 kgf					
Max. compression : 233 kgf					
		<u>Drive end</u>	<u>Non drive end</u>		
Bearing type	:	6208 ZZ	6206 ZZ		
Sealing	:	V'Ring	Without Bearing Seal		
Lubrication interval	:	-	-		
Lubricant amount	:	-	-		
Lubricant type	:	Mobil Polyrex EM			
Notes					
USABLE @208V 20.1A SF 1.00 SFA 20.1A					
This revision replaces and cancel the previous one, which must be eliminated. (1) Looking the motor from the shaft end. (2) Measured at 1m and with tolerance of +3dB(A). (3) Approximate weight subject to changes after manufacturing process. (4) At 100% of full load.			These are average values based on tests with sinusoidal power supply, subject to the tolerances stipulated in NEMA MG-1.		
Rev.	Changes Summary		Performed	Checked	Date
Performed by					
Checked by				Page	Revision
Date	10/04/2023			1 / 1	



Bearing cap																	
Internal AEGIS ground ring on the DE																	
Color Munsell N 1 matte black																	
Painting plan 207N																	
Mounting F-1/B3R(D)																	
						HYBRISUSER				00							
ECM		LOC		SUMMARY OF MODIFICATIONS				EXECUTED		CHECKED		RELEASED		DATE		VER	
EXECUTED		HYBRISUSER		THREE PH. MOTOR ROLLED STEEL NEMA PREM. EFF.				EXECUTED		CHECKED		RELEASED		DATE		VER	
CHECKED				FRAME 213/5T IP55 TEFC				EXECUTED		CHECKED		RELEASED		DATE		VER	
RELEASED								EXECUTED		CHECKED		RELEASED		DATE		VER	
REL. DATE		WMO		Jaragua do Sul				Product Engineering		SHEET		1 / 1		PREVIEW		WDD 00	

7.5 HP 04 Poles 60 Hz

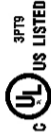
A REL. DATE WMO Jaragua do Sul Product Engineering SHEET 1 / 1

WEG

Dimensions in inches XME A3



NEMA
Premium



MADE IN MEXICO

MAT: 12674985 CC029A

W01.TE0IC0X0N

MODEL 00718ET3E213T-SG

PH 3	Hz 60	HP 7.5
FR 213/5T		KW 5.5
DUTY CONT.		V 230/460
ALT 1000 m.a.s.l.		A 18.4/9.18
INS CL F AT 80K	IP55	SFA 21.2/10.6
AMB 40°C	DES B	SF 1.15
ENCL TEFC	CODE J	PF 0.82
USABLE @ 208V 20.1A		RPM 1770
SF1.00		NEMA NOM. EFF 91.7%

ALTERNATE RATING: 7.5HP 50Hz 190-220/380-415V SF1.00
22.0-19.4/11.0-10.3A 1455RPM EFF 88.6% (IE2) IEC 60034-1

Inverter duty motor For 80Hz use on VPWM 1000:1 VT, 4:1 CT

DE 6208-ZZ	ODE 6206-ZZ	MOBIL POLYREX EM
-------------------	--------------------	-------------------------



INTERCHANGE ANY TWO LINE WIRES TO REVERSE THE ROTATION

WARNING: Motor must be grounded in accordance with local and national electrical codes to prevent serious electrical shocks. Disconnect power source before servicing unit.



AVERTISSEMENT: Le moteur doit être mis à la terre conformément aux codes électriques locaux et nationaux afin d'éviter tout choc électrique grave. Déconnectez l'alimentation avant l'entretien de la machine.

