

DATA SHEET

Three Phase Induction Motor - Squirrel Cage



Customer :					
Product line : NEMA Premium Efficiency Three-Phase		Product code : 11723875			
		Catalog # : 00718ET3E213T-W22			
Frame : 213/5T Output : 7.5 HP (5.5 kW) Poles : 4 Frequency : 60 Hz Rated voltage : 230/460 V Rated current : 18.4/9.18 A L. R. Amperes : 130/65.2 A LRC : 7.1x(Code H) No load current : 8.80/4.40 A Rated speed : 1765 rpm Slip : 1.94 % Rated torque : 3.08 kgfm Locked rotor torque : 220 % Breakdown torque : 310 % Insulation class : F Service factor : 1.25 Moment of inertia (J) : 0.0566 kgm ² Design : B		Locked rotor time : 36s (cold) 20s (hot) Temperature rise : 80 K Duty cycle : Cont.(S1) Ambient temperature : -20°C to +40°C Altitude : 1000 m.a.s.l. Protection degree : IP55 Cooling method : IC411 - TEFC Mounting : F-1 Rotation ¹ : Both (CW and CCW) Noise level ² : 58.0 dB(A) Starting method : Direct On Line Approx. weight ³ : 75.3 kg			
Output	25%	50%	75%	100%	
Efficiency (%)	88.6	89.5	91.0	91.7	
Power Factor	0.40	0.66	0.76	0.82	
Foundation loads					
Max. traction : 162 kgf					
Max. compression : 237 kgf					
		<u>Drive end</u>	<u>Non drive end</u>		
Bearing type	:	6308 ZZ	6207 ZZ		
Sealing	:	V'Ring	V'Ring		
Lubrication interval	:	-	-		
Lubricant amount	:	-	-		
Lubricant type	:	Mobil Polyrex EM			
Notes					
USABLE @208V 19.9A SF 1.15 SFA 22.9A					
This revision replaces and cancel the previous one, which must be eliminated. (1) Looking the motor from the shaft end. (2) Measured at 1m and with tolerance of +3dB(A). (3) Approximate weight subject to changes after manufacturing process. (4) At 100% of full load.			These are average values based on tests with sinusoidal power supply, subject to the tolerances stipulated in NEMA MG-1.		
Rev.	Changes Summary		Performed	Checked	Date
Performed by					
Checked by				Page	Revision
Date	19/10/2022			1 / 2	

TORQUE AND CURRENT VS SPEED CURVE

Three Phase Induction Motor - Squirrel Cage



Customer :

Product line : NEMA Premium Efficiency Three-Phase

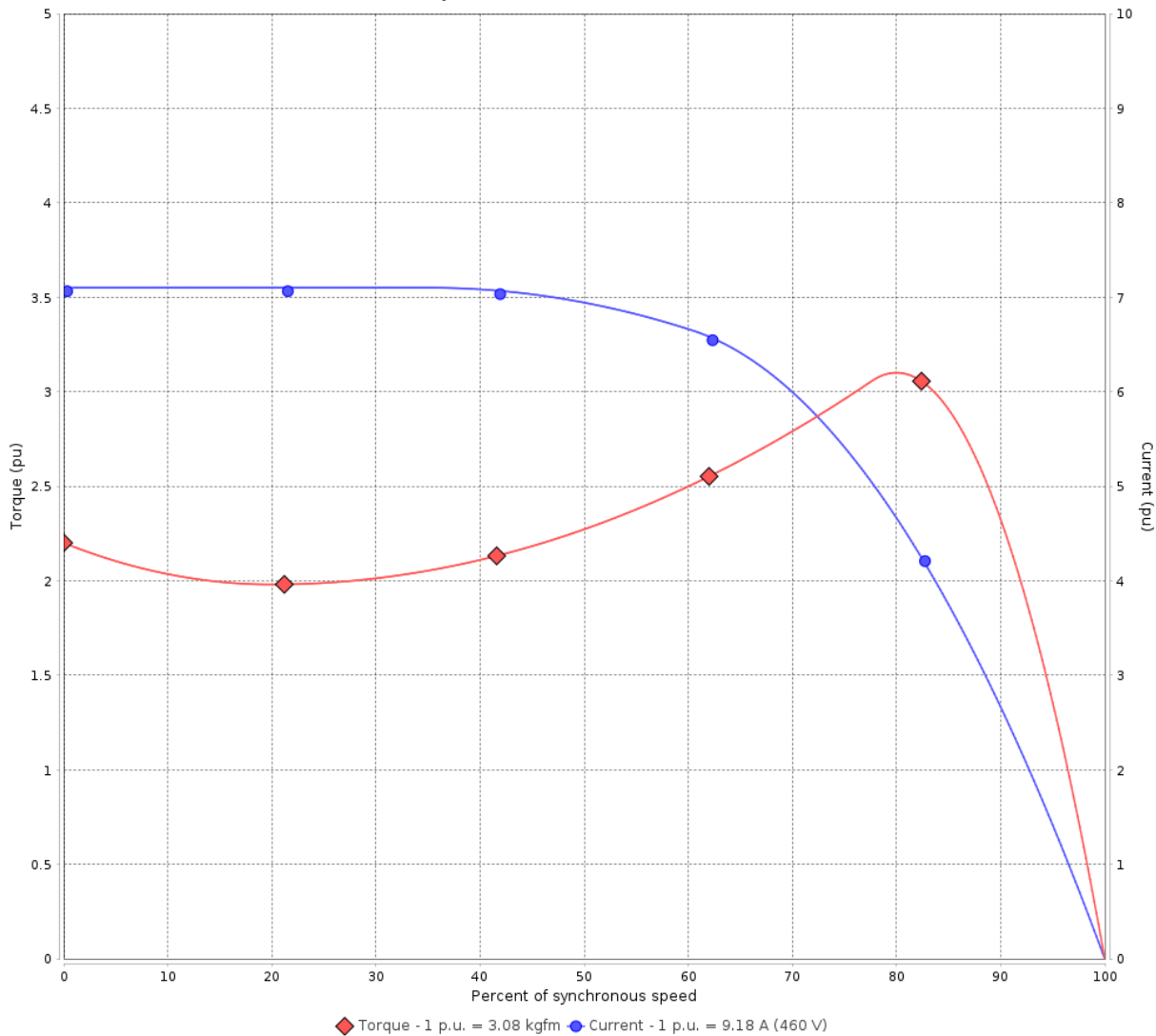
Product code :

11723875

Catalog # :

00718ET3E213T-W22

TORQUE AND CURRENT VS SPEED CURVE



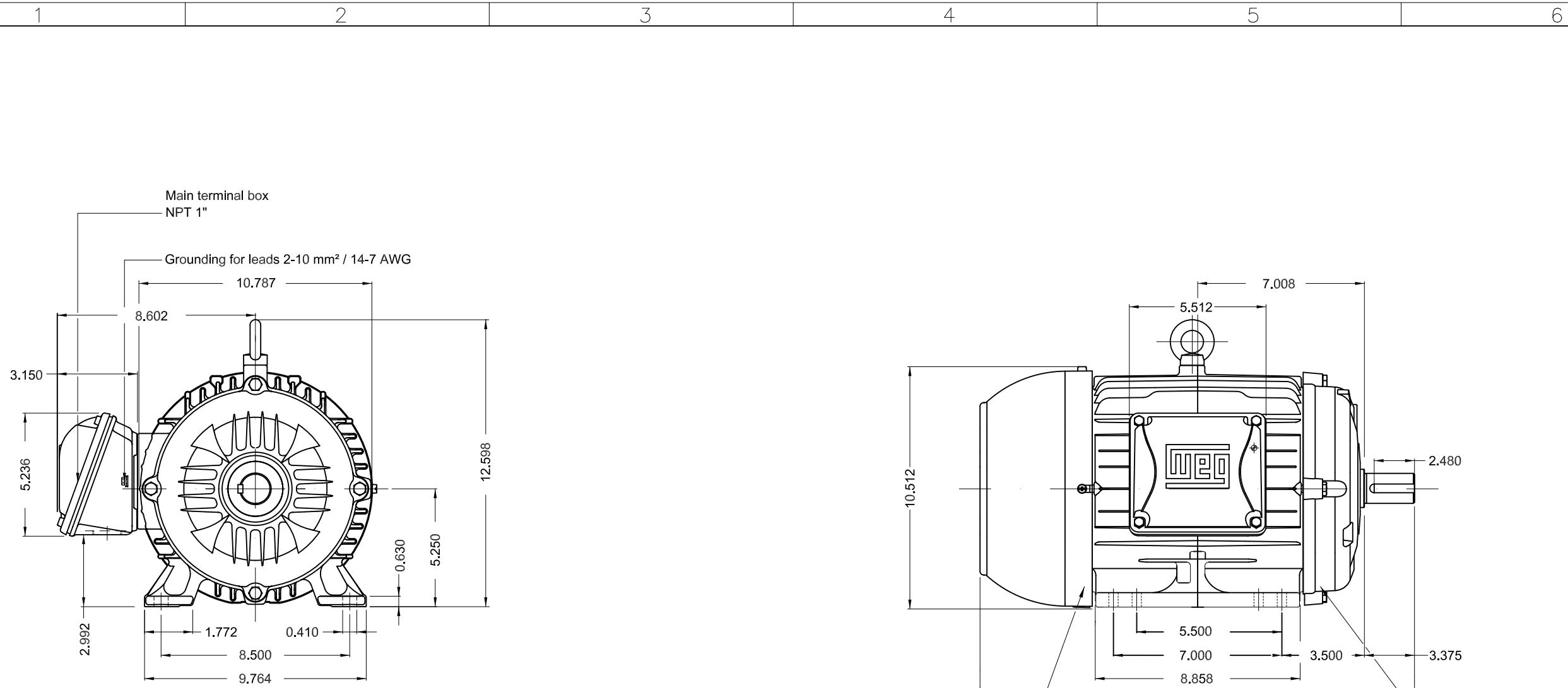
Performance : 230/460 V 60 Hz 4P

Rated current : 18.4/9.18 A
 LRC : 7.1
 Rated torque : 3.08 kgfm
 Locked rotor torque : 220 %
 Breakdown torque : 310 %
 Rated speed : 1765 rpm

Moment of inertia (J) : 0.0566 kgm²
 Duty cycle : Cont.(S1)
 Insulation class : F
 Service factor : 1.25
 Temperature rise : 80 K
 Design : B

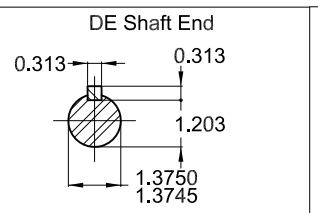
Locked rotor time : 36s (cold) 20s (hot)

Rev.	Changes Summary	Performed	Checked	Date
Performed by			Page 2 / 2	Revision
Checked by				
Date	19/10/2022			



7.5 HP 04 Poles 60 Hz A

Color RAL 5009
 Painting plan 207A
 Mounting B3R(D)



ECM	LOC	SUMMARY OF MODIFICATIONS	EXECUTED	CHECKED	RELEASED	DATE	VER
EXECUTED	HYBRISUSER	THREE PH. MOTOR W22 PREM. EFF. FRAME 213/5T IP55 TEFC					
CHECKED							
RELEASED							
REL DT.	WMO		Jaragua do Sul	Product Engineering			

PREVIEW

WDD

SHEET 1 / 1

MADE IN BRAZIL
11723875



MODEL 00718ET3E213T-W22

Inverter Duty Motor
Severe Duty



For use on 60Hz
Class I, Div 2, Gr A, B, C and D - T3
Class I, Zone 2, IIC - T3
Class II, Div 2, Gr F and G - T4
For use on PWM: Gr. A, B, C, D and F,
VT 1000:1, CT 20:1, 1.00SF - T3A



FOR SAFE AREA
Mod. TE1BFOXON
CC029A

PH3 60Hz Fr. 213/5T 1000m.a.s.l. IP55 TEFC 166lb

V 230/460

A 18.4/9.18

HP 7.5

kW 5.5

SF 1.25

SFA 23.0/11.5

RPM 1765

PF 0.82

AMB 40°C

INS cl. F DT80K

NEMA NOM EFF 91.7%

DUTY CONT.

DES B Code H

USABLE @208V 19.9A SF 1.15 SFA 22.9

7.5HP 5.5kW 50Hz 380V 11.0A 1455RPM SF 1.25 SFA 13.8 EFF 89.6% (IE3)

