

1/4" NPT Stainless Steel Body 2-Way Direct Acting Normally Closed



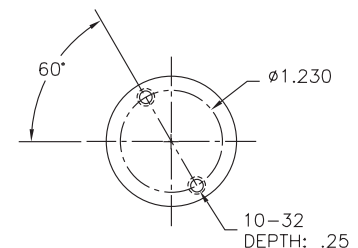
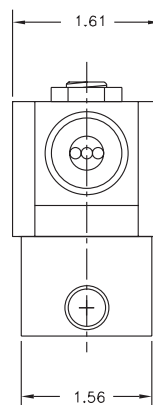
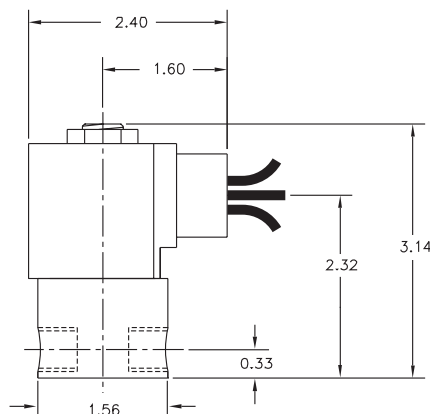
Materials	Seals:	Nitrile, Viton®, Ethylene Propylene, Teflon®, Rulon
	Orifice:	Stainless Steel
Electrical	Standard Housing:	Encapsulated Waterproof Conduit (NEMA 4/4X)
	Optional Housings:	Metallic Conduit, Explosion-proof (NEMA 7), Grommet, Open Frame, Junction Box (single or dual knockouts), DIN; Contact GC Valves Customer Service for others.
	Standard Voltages:	24, 120, 240 AC 60 Hz; 50 Hz available 6, 12, 24 DC; Contact GC Valves Customer Service for Additional Voltages.
	Voltage Tolerance:	±10% of applicable voltage
	Coil Classes:	F, H, N
	Standard Lead Length:	24 inch
Operating Temperature	Ambient (Nominal):	32°F to 125°F
Mounting	Position:	Any
Approvals*	Agency:	UL Safety Shut-off, UL Listed, UL Recognized, CSA Approved, FM Certified

* Not available for all variations

© Registered Trademark of DuPont Co.

Dimensions/Weight

Weight (lbs.)
1.1



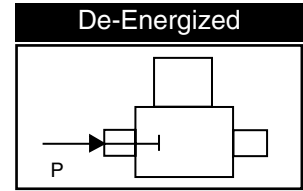
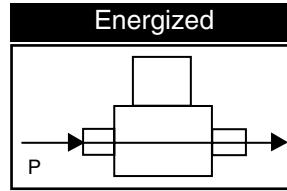
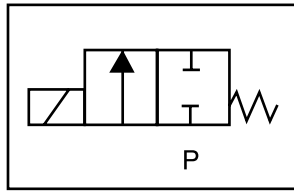
GC Valves Customer Service: 800-828-0484 (7:30am to 4pm ET) or 800-582-4232 (7:30am to 4pm PT)



S301 – 1/4" NPT, Stainless Steel Body, Normally Closed

Valve Selection List

Normally Closed



Pipe Size NPT	Orifice Size in.	C _v	Minimum	Operating Pressure Differential (psi)								Max Fluid Temp. °F	Seal Material	Power Consumption (Watts)		Model Code (120V/60HZ — 110V/50HZ Shown)
				Maximum										AC	DC	
				Air/Gas		Water		Light Oil		Steam*						
				AC	DC	AC	DC	AC	DC	AC	DC			AC	DC	Stainless Steel Body
1/4	1/32	.03	0	2400	2400	2400	2400	—	—	150*	150*	295	EPR	10	10	S301GF02C3BC1
	3/64	.05	0	1050	1000	1050	1000	—	—	150*	150*	295	EPR	10	10	S301GF02C3BC3
	1/16	.10	0	700	300	700	300	—	—	150*	150*	295	EPR	10	10	S301GF02C3BC5
	5/64	.15	0	500	240	500	240	—	—	150*	150*	295	EPR	10	10	S301GF02C3BC7
	3/32	.21	0	400	200	400	200	—	—	150*	150*	295	EPR	10	10	S301GF02C3BC9
	7/64	.29	0	350	170	350	170	—	—	150*	150*	295	EPR	10	10	S301GF02C3BD3
	1/8	.36	0	200	140	200	140	—	—	150*	140*	295	EPR	10	10	S301GF02C3BD5
	5/32	.44	0	150	100	150	100	—	—	150*	100*	295	EPR	10	10	S301GF02C3BD7
	3/16	.65	0	100	70	100	70	—	—	100*	70*	295	EPR	10	10	S301GF02C3BE1
	1/4	.85	0	50	20	50	20	—	—	50*	20*	295	EPR	10	10	S301GF02C3BE7
9/32	1.0	0	35	15	35	15	—	—	35*	15*	295	EPR	10	10	S301GF02C3BF1	
1/4	1/32	.03	0	2400	2400	2400	2400	2400	2400	—	—	180	Nitrile	10	10	S301GF02N3BC1
	3/64	.05	0	1050	1000	1050	1000	1050	1000	—	—	180	Nitrile	10	10	S301GF02N3BC3
	1/16	.10	0	700	300	700	300	700	300	—	—	180	Nitrile	10	10	S301GF02N3BC5
	5/64	.15	0	500	240	500	240	500	240	—	—	180	Nitrile	10	10	S301GF02N3BC7
	3/32	.21	0	400	200	400	200	400	200	—	—	180	Nitrile	10	10	S301GF02N3BC9
	7/64	.29	0	350	170	350	170	350	170	—	—	180	Nitrile	10	10	S301GF02N3BD3
	1/8	.36	0	200	140	200	140	200	140	—	—	180	Nitrile	10	10	S301GF02N3BD5
	5/32	.44	0	150	100	150	100	150	100	—	—	180	Nitrile	10	10	S301GF02N3BD7
	3/16	.65	0	100	70	100	70	100	70	—	—	180	Nitrile	10	10	S301GF02N3BE1
	1/4	.85	0	50	20	50	20	50	20	—	—	180	Nitrile	10	10	S301GF02N3BE7
9/32	1.0	0	35	15	35	15	35	15	—	—	180	Nitrile	10	10	S301GF02N3BF1	
1/4	1/32	.03	0	2400	2400	2400	2400	2400	2400	—	—	230	Viton	10	10	S301GF02V3BC1
	3/64	.05	0	1050	1000	1050	1000	1050	1000	—	—	230	Viton	10	10	S301GF02V3BC3
	1/16	.10	0	700	300	700	300	700	300	—	—	230	Viton	10	10	S301GF02V3BC5
	5/64	.15	0	500	240	500	240	500	240	—	—	230	Viton	10	10	S301GF02V3BC7
	3/32	.21	0	400	200	400	200	400	200	—	—	230	Viton	10	10	S301GF02V3BC9
	7/64	.29	0	350	170	350	170	350	170	—	—	230	Viton	10	10	S301GF02V3BD3
	1/8	.36	0	200	140	200	140	200	140	—	—	230	Viton	10	10	S301GF02V3BD5
	5/32	.44	0	150	100	150	100	150	100	—	—	230	Viton	10	10	S301GF02V3BD7
	3/16	.65	0	100	70	100	70	100	70	—	—	230	Viton	10	10	S301GF02V3BE1
	1/4	.85	0	50	20	50	20	50	20	—	—	230	Viton	10	10	S301GF02V3BE7
9/32	1.0	0	35	15	35	15	35	15	—	—	230	Viton	10	10	S301GF02V3BF1	

* Class H Coil Recommended for Steam and Other High Temperature Applications

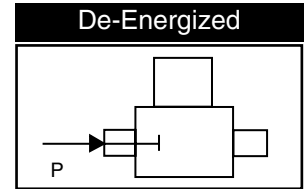
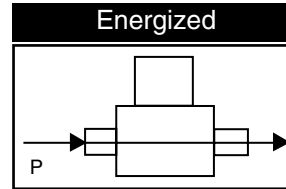
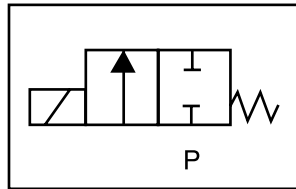
GC Valves Customer Service: 800-828-0484 (7:30am to 4pm ET) or 800-582-4232 (7:30am to 4pm PT)

S301 – 1/4" NPT, Stainless Steel Body, Normally Closed



Valve Selection List

Normally Closed



Pipe Size NPT	Orifice Size in.	C _v	Minimum	Operating Pressure Differential (psi)								Max Fluid Temp. °F	Seal Material	Power Consumption (Watts)		Model Code (120V/60HZ — 110V/50HZ Shown)
				Maximum										AC	DC	
				Air/Gas		Water		Light Oil		Steam*						
				AC	DC	AC	DC	AC	DC	AC	DC			AC	DC	
1/4	1/32	.03	0	2400	2400	2400	2400	2400	2400	150*	150*	366	Rulon	10	10	S301GF02R3BC1
	3/64	.05	0	1050	1000	1050	1000	1050	1000	150*	150*	366	Rulon	10	10	S301GF02R3BC3
	1/16	.10	0	700	300	700	300	700	300	150*	150*	366	Rulon	10	10	S301GF02R3BC5
	5/64	.15	0	500	240	500	240	500	240	150*	150*	366	Rulon	10	10	S301GF02R3BC7
	3/32	.21	0	400	200	400	200	400	200	150*	150*	366	Rulon	10	10	S301GF02R3BC9
	7/64	.29	0	350	170	350	170	350	170	150*	150*	366	Rulon	10	10	S301GF02R3BD3
	1/8	.36	0	200	140	200	140	200	140	150*	140*	366	Rulon	10	10	S301GF02R3BD5
	5/32	.44	0	150	100	150	100	150	100	150*	100*	366	Rulon	10	10	S301GF02R3BD7
	3/16	.65	0	100	70	100	70	100	70	100*	70*	366	Rulon	10	10	S301GF02R3BE1
	1/4	.85	0	50	20	50	20	50	20	50*	20*	366	Rulon	10	10	S301GF02R3BE7
	9/32	1.0	0	35	15	35	15	35	15	35*	15*	366	Rulon	10	10	S301GF02R3BF1
1/4	1/32	.03	0	2400	2400	2400	2400	2400	2400	150*	150*	366	Teflon	10	10	S301GF02T3BC1
	3/64	.05	0	1050	1000	1050	1000	1050	1000	150*	150*	366	Teflon	10	10	S301GF02T3BC3
	1/16	.10	0	700	300	700	300	700	300	150*	150*	366	Teflon	10	10	S301GF02T3BC5
	5/64	.15	0	500	240	500	240	500	240	150*	150*	366	Teflon	10	10	S301GF02T3BC7
	3/32	.21	0	400	200	400	200	400	200	150*	150*	366	Teflon	10	10	S301GF02T3BC9
	7/64	.29	0	350	170	350	170	350	170	150*	150*	366	Teflon	10	10	S301GF02T3BD3
	1/8	.36	0	200	140	200	140	200	140	150*	140*	366	Teflon	10	10	S301GF02T3BD5
	5/32	.44	0	150	100	150	100	150	100	150*	100*	366	Teflon	10	10	S301GF02T3BD7
	3/16	.65	0	100	70	100	70	100	70	100*	70*	366	Teflon	10	10	S301GF02T3BE1
	1/4	.85	0	50	20	50	20	50	20	50*	20*	366	Teflon	10	10	S301GF02T3BE7
	9/32	1.0	0	35	15	35	15	35	15	35*	15*	366	Teflon	10	10	S301GF02T3BF1

* Class H Coil Recommended for Steam and Other High Temperature Applications



S301 – 1/4" NPT, Stainless Steel Body, Normally Closed

Part Numbering

1	2	3	4	5	6	7	8	9	10	11	12	13
S	3	0	1	G	F	0	2	C	3	B	C	1
Series			Operating Mode	Housing*	Coil Class*	Voltage*		Seal Material	Body Material	Pipe Connection	Orifice Size	
S30			1: Normally Closed	G: Conduit	F: Class F H: Class H	02: 120/60 110/50		C: EPR N: Nitrile V: Viton R: Rulon T: Teflon	3: Stainless Steel	B: 1/4" NPT	C1: 1/32" C3: 3/64" C5: 1/16" C7: 5/64" C9: 3/32" D5: 1/8" D7: 5/32" E1: 3/16" E7: 1/4" F1: 9/32"	
* See the "Engineering Guide" for additional voltages, variations and options.												

Coil Data

Coil Family	
Type	Size
All	S4

Frequency (Hz)	60	50	
Nominal Power (VA)	Inrush	46	46
	Holding	18	19