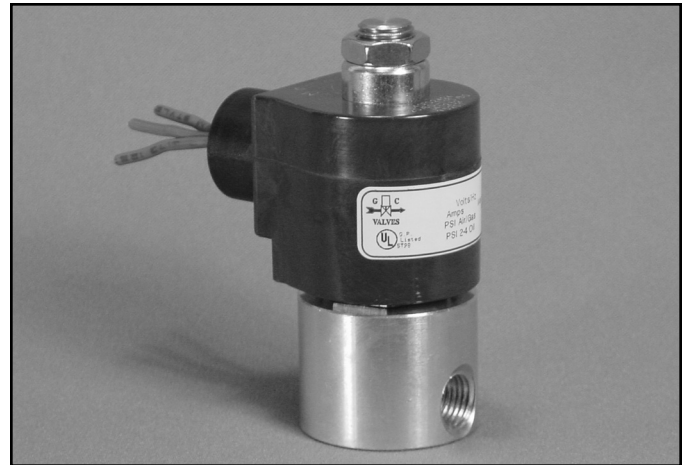


1/4" NPT Brass Body 2-Way Direct Acting Normally Open



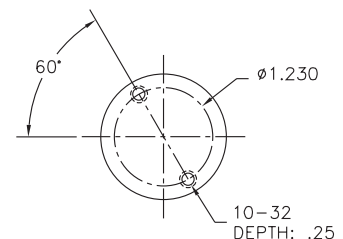
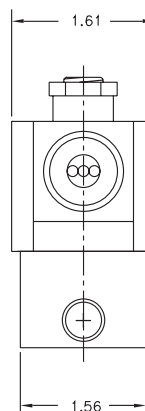
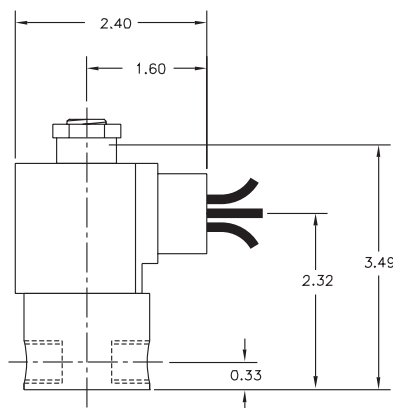
Materials	Seals:	Nitrile, Viton®, Ethylene Propylene, Teflon®, Rulon
	Orifice:	Stainless Steel
Electrical	Standard Housing:	Encapsulated Waterproof Conduit (NEMA 4/4X)
	Optional Housings:	Metallic Conduit, Explosion-proof (NEMA 7), Grommet, Open Frame, Junction Box (single or dual knockouts), DIN; Contact GC Valves Customer Service for others.
	Standard Voltages:	24, 120, 240 AC 60 Hz; 50 Hz available 6, 12, 24 DC; Contact GC Valves Customer Service for Additional Voltages.
	Voltage Tolerance:	±10% of applicable voltage
	Coil Classes:	F, H, N
	Standard Lead Length:	24 inch
Operating Temperature	Ambient (Nominal):	32°F to 125°F
Mounting	Position:	Any
Approvals*	Agency:	UL Listed, UL Recognized, CSA Approved

* Not available for all variations

© Registered Trademark of DuPont Co.

Dimensions/Weight

Weight (lbs.)
1.1



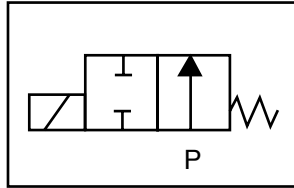
GC Valves Customer Service: 800-828-0484 (7:30am to 4pm ET) or 800-582-4232 (7:30am to 4pm PT)



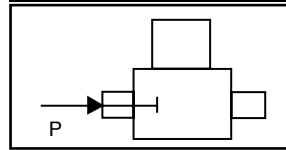
S302 – 1/4" NPT, Brass Body, Normally Open

Valve Selection List

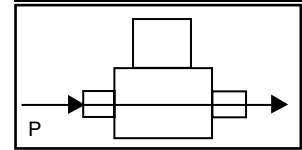
Normally Open



Energized



De-Energized



Pipe Size NPT	Orifice Size in.	C _v	Operating Pressure Differential (psi)								Max Fluid Temp. °F	Seal Material	Power Consumption (Watts)		Model Code (120V/60HZ — 110V/50HZ Shown)			
			Maximum										AC	DC				
			Air/Gas		Water		Light Oil		Steam*									
			AC	DC	AC	DC	AC	DC	AC	DC			AC	DC	Brass Body			
1/4	1/32	.03	0	2400	2400	2400	2400	2400	2400	—	—	150*	150*	295	EPR	11	10	S302GF02C8BC1
	3/64	.05	0	600	600	600	600	600	600	—	—	150*	150*	295	EPR	11	10	S302GF02C8BC3
	1/16	.10	0	325	325	325	325	325	325	—	—	150*	150*	295	EPR	11	10	S302GF02C8BC5
	5/64	.15	0	235	235	235	235	235	235	—	—	150*	150*	295	EPR	11	10	S302GF02C8BC7
	3/32	.20	0	150	150	150	150	150	150	—	—	150*	150*	295	EPR	11	10	S302GF02C8BC9
	7/64	.25	0	125	125	125	125	125	125	—	—	125*	125*	295	EPR	11	10	S302GF02C8BD3
	1/8	.30	0	100	100	100	100	100	100	—	—	100*	100*	295	EPR	11	10	S302GF02C8BD5
	5/32	.43	0	60	60	60	60	60	60	—	—	60*	60*	295	EPR	11	10	S302GF02C8BD7
3/16	.65	0	40	40	40	40	40	40	—	—	40*	40*	295	EPR	11	10	S302GF02C8BE1	
1/4	1/32	.03	0	2400	2400	2400	2400	2400	2400	—	—	180	Nitrile	11	10	S302GF02N8BC1		
	3/64	.05	0	600	600	600	600	600	600	—	—	180	Nitrile	11	10	S302GF02N8BC3		
	1/16	.10	0	325	325	325	325	325	325	—	—	180	Nitrile	11	10	S302GF02N8BC5		
	5/64	.15	0	235	235	235	235	235	235	—	—	180	Nitrile	11	10	S302GF02N8BC7		
	3/32	.20	0	150	150	150	150	150	150	—	—	180	Nitrile	11	10	S302GF02N8BC9		
	7/64	.25	0	125	125	125	125	125	125	—	—	180	Nitrile	11	10	S302GF02N8BD3		
	1/8	.30	0	100	100	100	100	100	100	—	—	180	Nitrile	11	10	S302GF02N8BD5		
	5/32	.43	0	60	60	60	60	60	60	—	—	180	Nitrile	11	10	S302GF02N8BD7		
3/16	.65	0	40	40	40	40	40	40	—	—	180	Nitrile	11	10	S302GF02N8BE1			
1/4	1/32	.03	0	2400	2400	2400	2400	2400	2400	—	—	230	Viton	11	10	S302GF02V8BC1		
	3/64	.05	0	600	600	600	600	600	600	—	—	230	Viton	11	10	S302GF02V8BC3		
	1/16	.10	0	325	325	325	325	325	325	—	—	230	Viton	11	10	S302GF02V8BC5		
	5/64	.15	0	235	235	235	235	235	235	—	—	230	Viton	11	10	S302GF02V8BC7		
	3/32	.20	0	150	150	150	150	150	150	—	—	230	Viton	11	10	S302GF02V8BC9		
	7/64	.25	0	125	125	125	125	125	125	—	—	230	Viton	11	10	S302GF02V8BD3		
	1/8	.30	0	100	100	100	100	100	100	—	—	230	Viton	11	10	S302GF02V8BD5		
	5/32	.43	0	60	60	60	60	60	60	—	—	230	Viton	11	10	S302GF02V8BD7		
3/16	.65	0	40	40	40	40	40	40	—	—	230	Viton	11	10	S302GF02V8BE1			

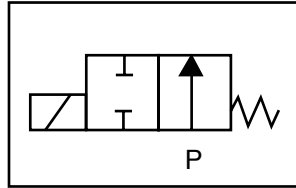
* Class H Coil Recommended for Steam and Other High Temperature Applications

S302 – 1/4" NPT, Brass Body, Normally Open

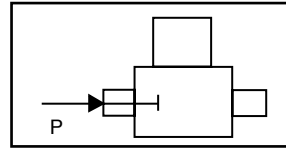


Valve Selection List

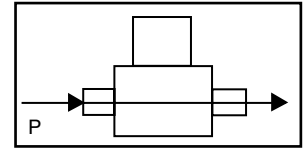
Normally Open



Energized



De-Energized



Pipe Size NPT	Orifice Size in.	C _v	Minimum	Operating Pressure Differential (psi)								Max Fluid Temp. °F	Seal Material	Power Consumption (Watts)		Model Code (120V/60HZ — 110V/50HZ Shown)
				Maximum										AC	DC	
				Air/Gas		Water		Light Oil		Steam*						
				AC	DC	AC	DC	AC	DC	AC	DC			AC	DC	AC
1/4	1/32	.03	0	2400	2400	2400	2400	2400	2400	150*	150*	366	Rulon	11	10	S302GF02R8BC1
	3/64	.05	0	600	600	600	600	600	600	150*	150*	366	Rulon	11	10	S302GF02R8BC3
	1/16	.10	0	325	325	325	325	325	325	150*	150*	366	Rulon	11	10	S302GF02R8BC5
	7/64	.15	0	235	235	235	235	235	235	150*	150*	366	Rulon	11	10	S302GF02R8BC7
	3/32	.20	0	150	150	150	150	150	150	150*	150*	366	Rulon	11	10	S302GF02R8BC9
	7/64	.25	0	125	125	125	125	125	125	125*	125*	366	Rulon	11	10	S302GF02R8BD3
	1/8	.30	0	100	100	100	100	100	100	100*	100*	366	Rulon	11	10	S302GF02R8BD5
	5/32	.43	0	60	60	60	60	60	60	60*	60*	366	Rulon	11	10	S302GF02R8BD7
3/16	.65	0	40	40	40	40	40	40	40*	40*	366	Rulon	11	10	S302GF02R8BE1	
1/4	1/32	.03	0	2400	2400	2400	2400	2400	2400	150*	150*	366	Teflon	11	10	S302GF02T8BC1
	3/64	.05	0	600	600	600	600	600	600	150*	150*	366	Teflon	11	10	S302GF02T8BC3
	1/16	.10	0	325	325	325	325	325	325	150*	150*	366	Teflon	11	10	S302GF02T8BC5
	5/64	.15	0	235	235	235	235	235	235	150*	150*	366	Teflon	11	10	S302GF02T8BC7
	3/32	.20	0	150	150	150	150	150	150	150*	150*	366	Teflon	11	10	S302GF02T8BC9
	7/64	.25	0	125	125	125	125	125	125	125*	125*	366	Teflon	11	10	S302GF02T8BD3
	1/8	.30	0	100	100	100	100	100	100	100*	100*	366	Teflon	11	10	S302GF02T8BD5
	5/32	.43	0	60	60	60	60	60	60	60*	60*	366	Teflon	11	10	S302GF02T8BD7
3/16	.65	0	40	40	40	40	40	40	40*	40*	366	Teflon	11	10	S302GF02T8BE1	

* Class H Coil Recommended for Steam and Other High Temperature Applications



S302 – 1/4" NPT, Brass Body, Normally Open

Part Numbering

1	2	3	4	5	6	7	8	9	10	11	12	13
S	3	0	2	G	F	0	2	C	8	B	C	1
Series			Operating Mode	Housing*	Coil Class*	Voltage*		Seal Material	Body Material	Pipe Connection	Orifice Size	
S30			2: Normally Open	G: Conduit	F: Class F H: Class H	02: 120/60 110/50		C: EPR N: Nitrile V: Viton R: Rulon T: Teflon	8: Brass	B: 1/4" NPT	C1: 1/32" C3: 3/64" C5: 1/16" C9: 3/32" D5: 1/8" E1: 3/16"	
* See the "Engineering Guide" for additional voltages, variations and options.												

Coil Data

Coil Family	
Type	Size
All	S4

Frequency (Hz)	60	50
Nominal Power (VA)	Inrush	46
	Holding	22

Western Region

4525 E. Industrial St., Unit 4C

Simi Valley, CA 93063

Phone: (800) 582-4232

Fax: (805) 582-0210

E-mail: Linda.Newbold@gcvalves.com

Eastern Region

456 Crompton St.

Charlotte, NC 28273

Phone (800) 828-0484

Fax: (704) 973-9526

E-mail: Service@gcvalves.com