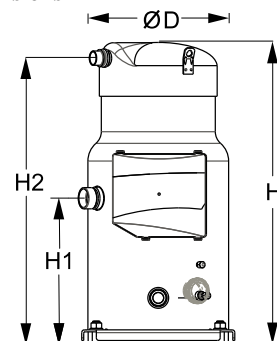
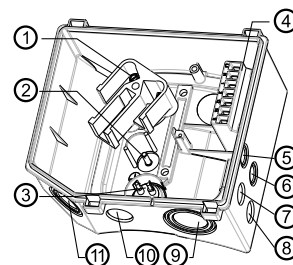


General Characteristics

Model number (on compressor nameplate)		SH180B4ABE
Code number for Singlepack*		120H0275
Code number for Industrial pack**		120H0276
Drawing number		8556089c
Suction and discharge connections		Brazed
Suction connection		1-5/8" ODF
Discharge connection		1-1/8" ODF
Oil sight glass		Threaded
Oil equalization connection		2-1/4" Rotolock
Oil drain connection		1/4" flare
LP gauge port		Schrader
IPR valve		None
Reverse rotation protection		Electronic module
Swept volume	10.39 in ³ /rev	
Displacement @ Nominal speed	1046 cfh @ 2900 rpm - 1262 cfh @ 3500 rpm	
Net weight	238 lbs	
Oil charge	227 oz, POE - 160SZ	
Maximum system test pressure Low Side / High side	435 psi / 653 psi	
Maximum differential test pressure	537 psi	
Maximum number of starts per hour	12	
Refrigerant charge limit	30 lbs	
Approved refrigerants	R410A	

Dimensions


D=12.5 inch, H=26.9 inch,
H1=13 inch, H2=25.5 inch

Terminal box


IP54 (with cable gland)

- 1: Power connection, 3 x 4.8 mm (3/16")
- 2: Earth M5
- 3: Thermostat connector
- 4: Electronic protection module
- 5: Double knock-out Ø 22.5 mm (7/8") & Ø 16.5 mm (0.65")
- 6: Double knock-out Ø 22.5 mm (7/8") & Ø 16.5 mm (0.65")
- 7: Knock-out Ø 20.7 mm (0.81")
- 8: Knock-out Ø 20.7 mm (0.81")
- 9: Triple knock-out Ø 50.8 mm (2") & Ø 43.7 mm (1.72") & Ø 34.5 mm (1.35")
- 10: Knock-out Ø 25.5 mm (1.00")
- 11: Triple knock-out Ø 40.5 mm (1.59") & Ø 32.2 mm (1.27") & Ø 25.5 mm (1")

Electrical Characteristics

Nominal voltage	380-400V/3/50Hz - 460V/3/60Hz
Voltage range	340-440 V @ 50Hz - 414-506 V @ 60Hz
Winding resistance (between phases) +/- 7% at 77°F	0.801 #
Rated Load Amps (RLA)	27.0 A
Maximum Continuous Current (MCC)	38 A
Locked Rotor Amps (LRA)	170 A
Motor protection	Electronic protection module, 230 V

Recommended Installation torques

Oil sight glass	37 ft.lbs
Power connections / Earth connection	2 ft.lbs / 1 ft.lbs
Mounting bolts	15 ft.lbs

Parts shipped with compressor

Mounting kit with rigid grommets, bolts, nuts, sleeves and washers
Electronic protection module mounted in terminal box
Initial oil charge
Installation instructions

Approvals : CE certified, UL certified (file SA6873), -

*Singlepack: Compressor in cardboard box

**Industrial pack: 6 Unboxed compressors on pallet (order per multiples of 6)

Rotolock accessories, suction side
Code no.

Solder sleeve, P03 (2-1/4" Rotolock, 1-5/8" ODF)	8153006
Rotolock valve, V03 (2-1/4" Rotolock, 1-5/8" ODF)	8168026
Rotolock adapter (2" 1/4 Rotolock, 1" 5/8 ODF)	120Z0432
Gasket, 2-1/4"	8156133

Rotolock accessories, discharge side
Code no.

Solder sleeve, P02 (1-3/4" Rotolock, 1-1/8" ODF)	8153004
Angle adapter, C02 (1-3/4" Rotolock, 1-1/8" ODF)	8168005
Rotolock valve, V02 (1-3/4" Rotolock, 1-1/8" ODF)	8168028
Rotolock adapter (1-3/4" Rotolock, 1-1/8" ODF)	120Z0364
Gasket, 1-3/4"	8156132

Rotolock accessories, sets
Code no.

Solder sleeve adapter set, 1-5/8" ODF & 1-1/8" ODF	7765028
Valve set, V03 (2-1/4"~1-5/8"), V02 (1-3/4"~1-1/8")	7703383
Gasket set, 1-1/4", 1-3/4", 2-1/4", OSG gaskets black & white	8156013

Oil / lubricants
Code no.

POE lubricant, 160SZ, 1 liter can	7754023
POE lubricant, 160SZ, 2 liter can	7754024

Crankcase heaters
Code no.

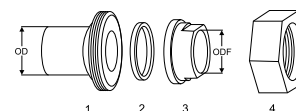
Surface sump heater + bottom insulation, 56 W, 24 V, CE mark, UL	120Z0360
Surface sump heater + bottom insulation, 56 W, 230 V, CE mark, UL	120Z0376
Surface sump heater + bottom insulation, 56 W, 400 V, CE mark, UL	120Z0377
Surface sump heater + bottom insulation, 56 W, 460 V, CE mark, UL	120Z0378
Belt type crankcase heater, 75 W, 230 V, CE mark, UL	7773108
Belt type crankcase heater, 75 W, 400 V, CE mark, UL	7773118
Belt type crankcase heater, 75 W, 460 V, CE mark, UL	120Z0464

Miscellaneous accessories
Code no.

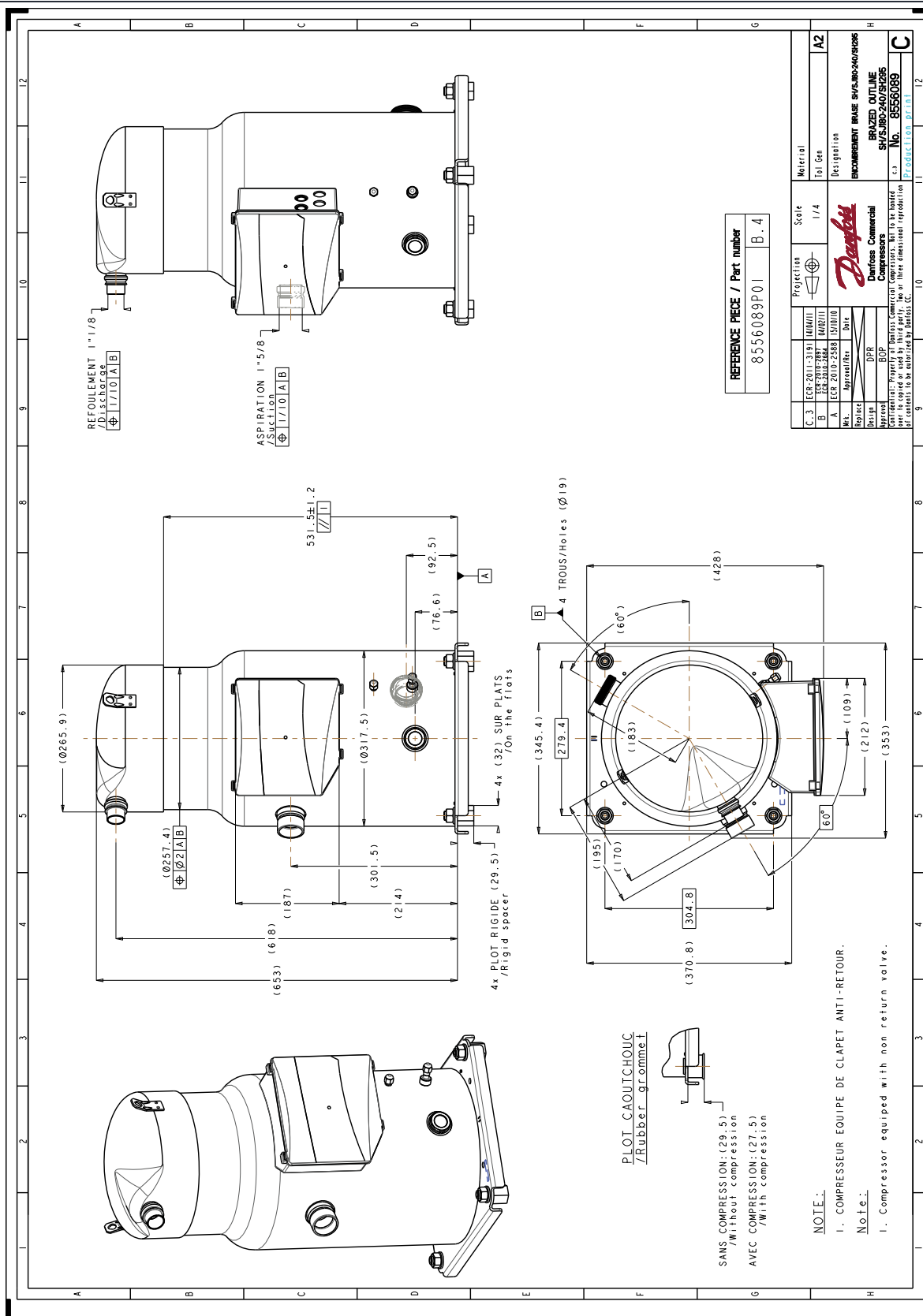
Electronic soft start kit, MCI 25 C	7705007
Mounting kit for 1 scroll compressor including 4 grommets, 4 sleeves, 4 bolts, 4 washers	8156138
Acoustic hood for scroll compressor SH180-SH380	120Z0022
Acoustic bottom insulation for scroll compressor SH180-SH380	120Z0353
Discharge thermostat kit	7750009

Spare parts
Code no.

Electronic motor protection module, 230 V	8169021
Mounting kit for 1 scroll compressor including 4 hexagon rigid grommets, 4 sleeves, 4 bolts, 4 washers	7777045
Oil sight glass with gaskets (black & white)	8156019
Gasket for oil sight glass (white teflon)	8156129
Terminal box 210 x 190 incl. cover	120Z0458
T block connector 2.4" x 3"	8173021

Solder sleeve adapter set


- 1: Rotolock adapter (Suc & Dis)
- 2: Gasket (Suc & Dis)
- 3: Solder sleeve (Suc & Dis)
- 4: Rotolock nut (Suc & Dis)



Danfoss can accept no responsibility for possible errors in catalogues, brochures and other printed material. Danfoss reserves the right to alter its products without notice. This also applies to products already on order provided that such alterations can be made without consequential changes being necessary in specifications already agreed. All trademarks in this material are property of the respective companies. Danfoss, the Danfoss logotype and Maneurop are trademarks of Danfoss A/S. All rights reserved.