

# DATA SHEET



## Three Phase Induction Motor - Squirrel Cage

Customer :																			
Product line	: Rolled Steel NEMA Premium Efficiency Three-Phase																		
Product code :	12674978																		
Catalog # :	00718OT3E213T-SG																		
Frame : 213/5T Output : 7.5 HP (5.5 kW) Poles : 4 Frequency : 60 Hz Rated voltage : 230/460 V Rated current : 18.5/9.25 A L. R. Amperes : 133/66.6 A LRC : 7.2x(Code H) No load current : 8.79/4.39 A Rated speed : 1770 rpm Slip : 1.67 % Rated torque : 22.3 ft.lb Locked rotor torque : 240 % Breakdown torque : 320 % Insulation class : F Service factor : 1.15 Moment of inertia (J) : 1.03 sq.ft.lb Design : B	Locked rotor time : 23s (cold) 13s (hot) Temperature rise : 80 K Duty cycle : Cont.(S1) Ambient temperature : -20°C to +40°C Altitude : 1000 m.a.s.l. Cooling method : IC01 - ODP Mounting : F-1 Rotation <sup>1</sup> : Both (CW and CCW) Noise level <sup>2</sup> : 59.0 dB(A) Starting method : Direct On Line Approx. weight <sup>3</sup> : 117 lb																		
Output	25%    50%    75%    100%																		
Efficiency (%)	88.6    89.5    90.2    91.0																		
Power Factor	0.39    0.65    0.77    0.82																		
Foundation loads																			
Max. traction : 366 lb																			
Max. compression : 483 lb																			
	<table border="0"> <tr> <td></td> <td style="text-align: center;"><u>Drive end</u></td> <td style="text-align: center;"><u>Non drive end</u></td> </tr> <tr> <td>Bearing type :</td> <td style="text-align: center;">6208 ZZ</td> <td style="text-align: center;">6206 ZZ</td> </tr> <tr> <td>Sealing :</td> <td style="text-align: center;">Without Bearing Seal</td> <td style="text-align: center;">Without Bearing Seal</td> </tr> <tr> <td>Lubrication interval :</td> <td style="text-align: center;">-</td> <td style="text-align: center;">-</td> </tr> <tr> <td>Lubricant amount :</td> <td style="text-align: center;">-</td> <td style="text-align: center;">-</td> </tr> <tr> <td>Lubricant type :</td> <td colspan="2" style="text-align: center;">Mobil Polyrex EM</td> </tr> </table>		<u>Drive end</u>	<u>Non drive end</u>	Bearing type :	6208 ZZ	6206 ZZ	Sealing :	Without Bearing Seal	Without Bearing Seal	Lubrication interval :	-	-	Lubricant amount :	-	-	Lubricant type :	Mobil Polyrex EM	
	<u>Drive end</u>	<u>Non drive end</u>																	
Bearing type :	6208 ZZ	6206 ZZ																	
Sealing :	Without Bearing Seal	Without Bearing Seal																	
Lubrication interval :	-	-																	
Lubricant amount :	-	-																	
Lubricant type :	Mobil Polyrex EM																		
Notes USABLE @208V 20.5A SF 1.00 SFA 20.5A																			
This revision replaces and cancel the previous one, which must be eliminated. (1) Looking the motor from the shaft end. (2) Measured at 1m and with tolerance of +3dB(A). (3) Approximate weight subject to changes after manufacturing process. (4) At 100% of full load.																			
These are average values based on tests with sinusoidal power supply, subject to the tolerances stipulated in NEMA MG-1.																			
Rev.	Changes Summary	Performed	Checked	Date															
Performed by																			
Checked by			Page	Revision															
Date	20/04/2020		1 / 6																

# TORQUE AND CURRENT VS SPEED CURVE

## Three Phase Induction Motor - Squirrel Cage



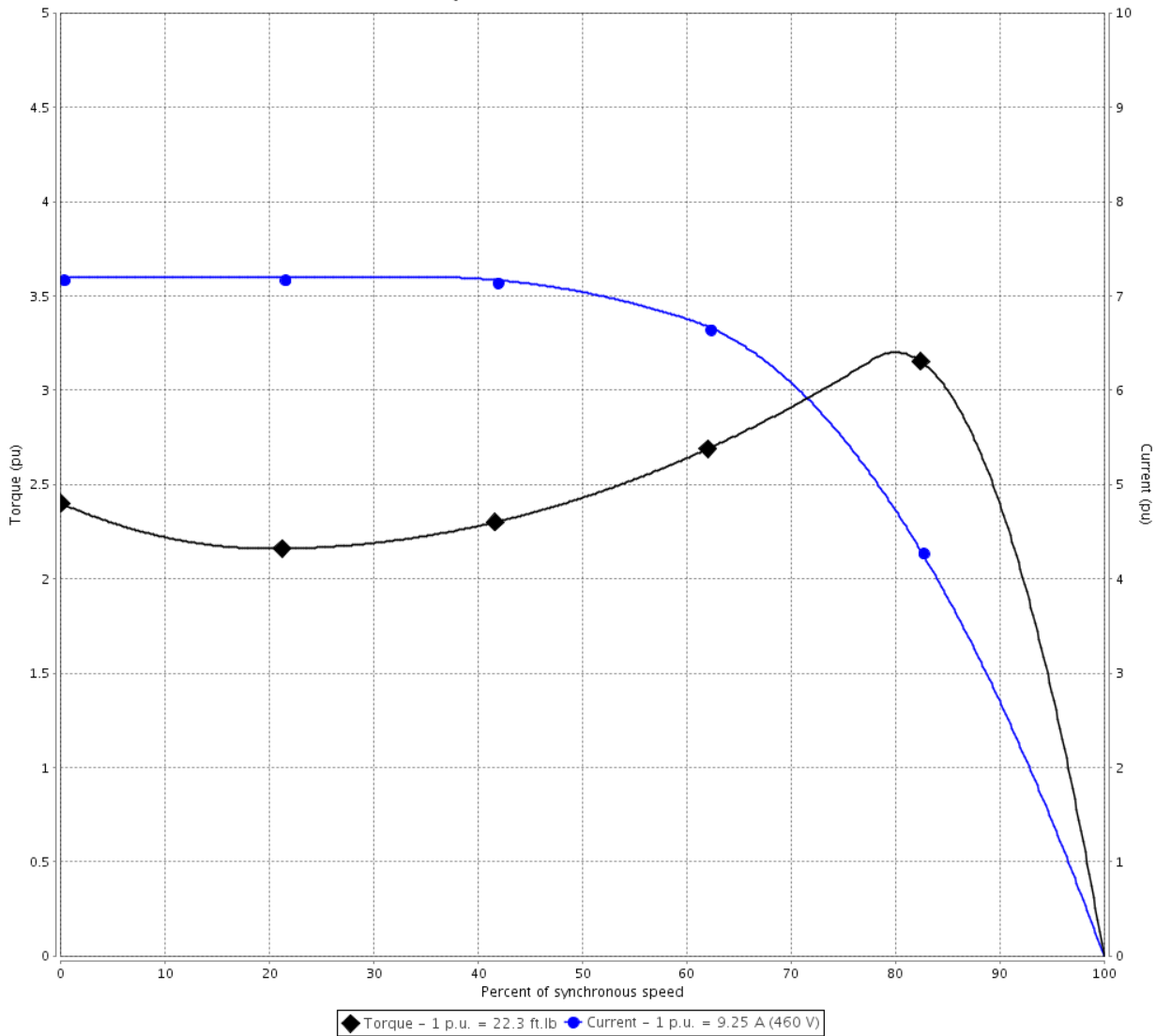
Customer :

Product line : Rolled Steel NEMA Premium Efficiency Three-Phase

Product code : 12674978

Catalog # : 007180T3E213T-SG

TORQUE AND CURRENT VS SPEED CURVE



Performance : 230/460 V 60 Hz 4P

Rated current	: 18.5/9.25 A	Moment of inertia (J)	: 1.03 sq.ft.lb
LRC	: 7.2	Duty cycle	: Cont.(S1)
Rated torque	: 22.3 ft.lb	Insulation class	: F
Locked rotor torque	: 240 %	Service factor	: 1.15
Breakdown torque	: 320 %	Temperature rise	: 80 K
Rated speed	: 1770 rpm	Design	: B

Locked rotor time : 23s (cold) 13s (hot)

Rev.	Changes Summary	Performed	Checked	Date
Performed by			Page 2 / 6	Revision
Checked by				
Date	20/04/2020			

# LOAD PERFORMANCE CURVE

## Three Phase Induction Motor - Squirrel Cage

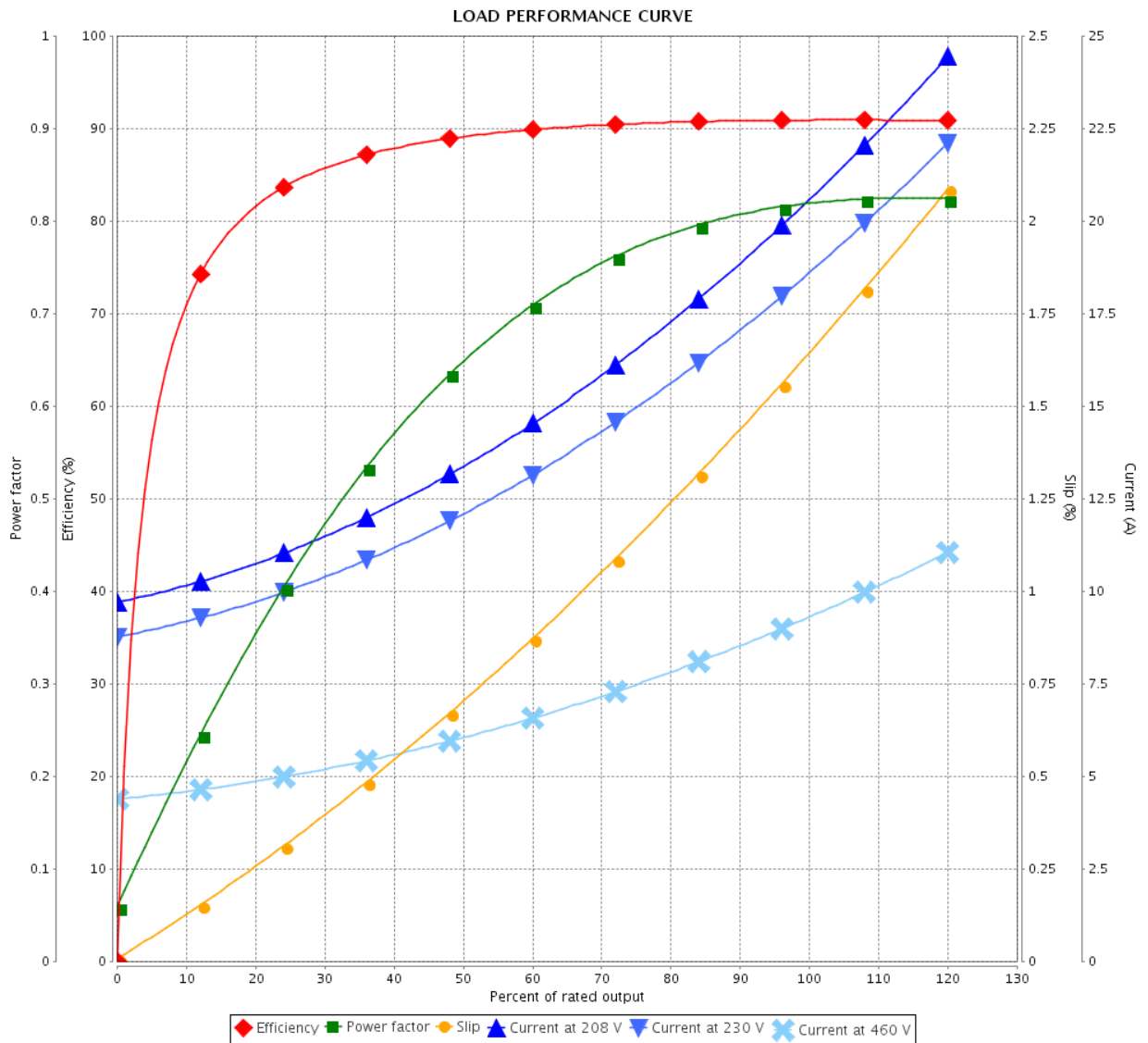


Customer :

Product line : Rolled Steel NEMA Premium Efficiency Three-Phase

Product code : 12674978

Catalog # : 007180T3E213T-SG



Performance : 230/460 V 60 Hz 4P

Rated current : 18.5/9.25 A  
 LRC : 7.2  
 Rated torque : 22.3 ft.lb  
 Locked rotor torque : 240 %  
 Breakdown torque : 320 %  
 Rated speed : 1770 rpm

Moment of inertia (J) : 1.03 sq.ft.lb  
 Duty cycle : Cont.(S1)  
 Insulation class : F  
 Service factor : 1.15  
 Temperature rise : 80 K  
 Design : B

Rev.	Changes Summary	Performed	Checked	Date
Performed by			Page	Revision
Checked by				
Date				

# THERMAL LIMIT CURVE



## Three Phase Induction Motor - Squirrel Cage

Customer :

Product line : Rolled Steel NEMA Premium  
Efficiency Three-Phase

Product code : 12674978

Catalog # : 00718OT3E213T-SG

Performance : 230/460 V 60 Hz 4P

Rated current : 18.5/9.25 A  
LRC : 7.2  
Rated torque : 22.3 ft.lb  
Locked rotor torque : 240 %  
Breakdown torque : 320 %  
Rated speed : 1770 rpm

Moment of inertia (J) : 1.03 sq.ft.lb  
Duty cycle : Cont.(S1)  
Insulation class : F  
Service factor : 1.15  
Temperature rise : 80 K  
Design : B

Heating constant

Cooling constant

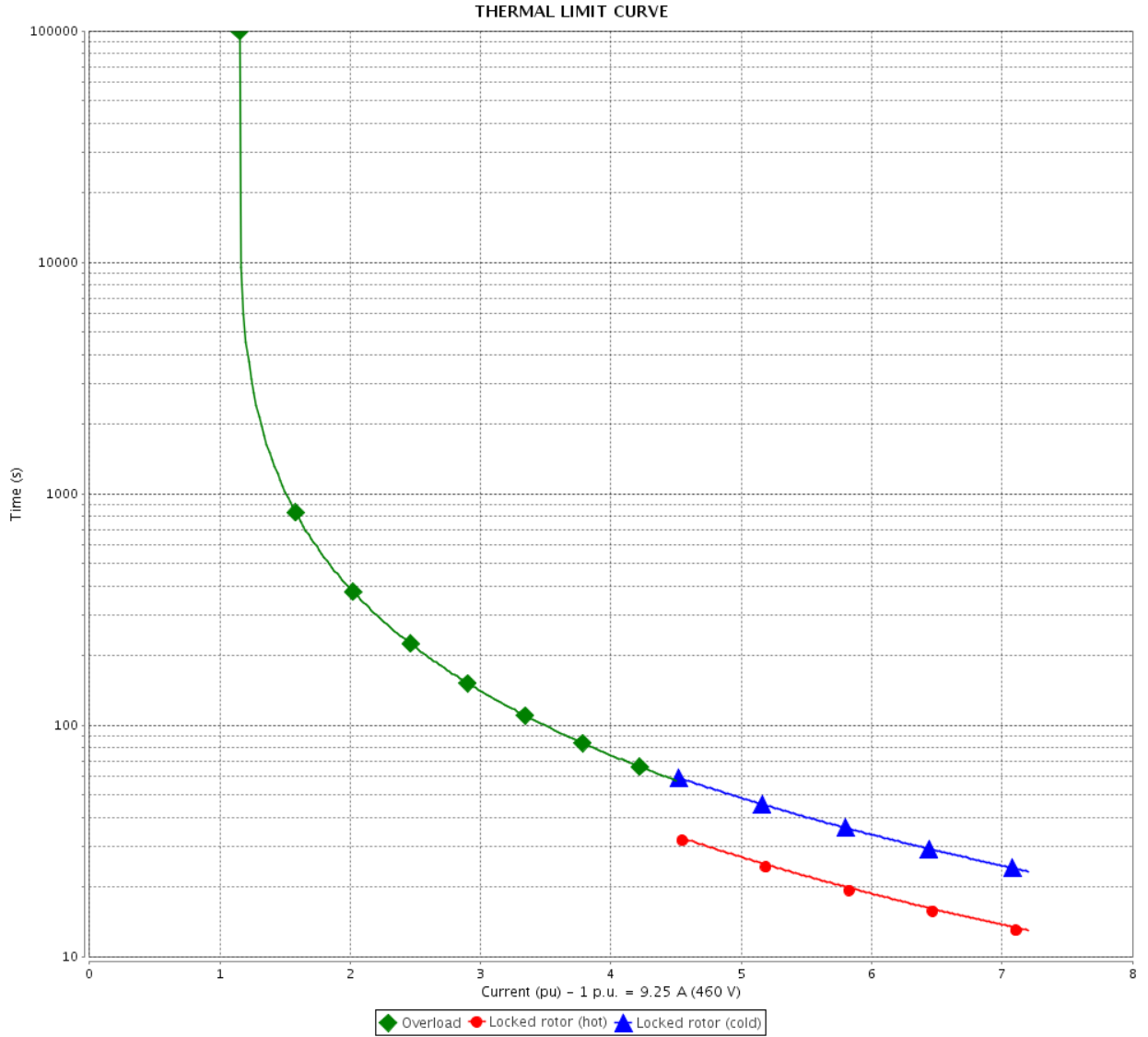
Rev.	Changes Summary	Performed	Checked	Date
Performed by				
Checked by			Page	Revision
Date	20/04/2020		4 / 6	

# THERMAL LIMIT CURVE

Three Phase Induction Motor - Squirrel Cage



Customer : \_\_\_\_\_



Rev.	Changes Summary	Performed	Checked	Date
Performed by				Page 5 / 6
Checked by				
Date	20/04/2020			
				Revision

# VFD OPERATION CURVE

Three Phase Induction Motor - Squirrel Cage

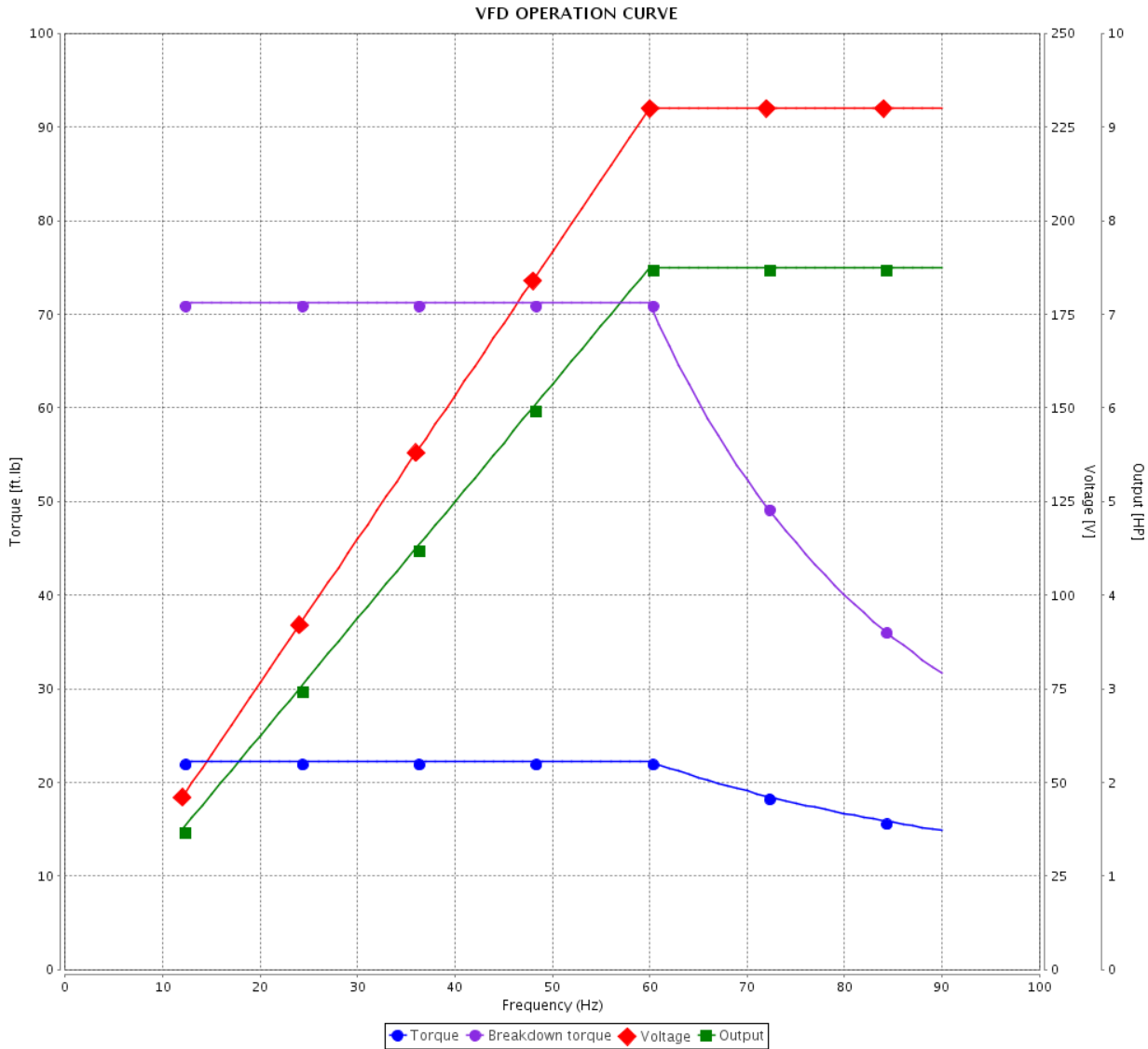


Customer :

Product line : Rolled Steel NEMA Premium Efficiency Three-Phase

Product code : 12674978

Catalog # : 007180T3E213T-SG



Performance : 230/460 V 60 Hz 4P

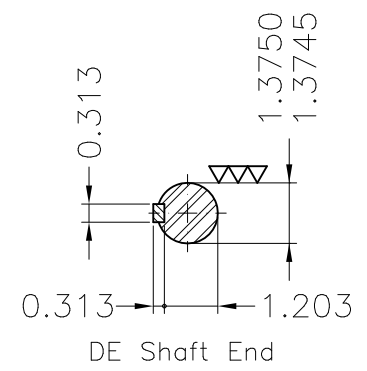
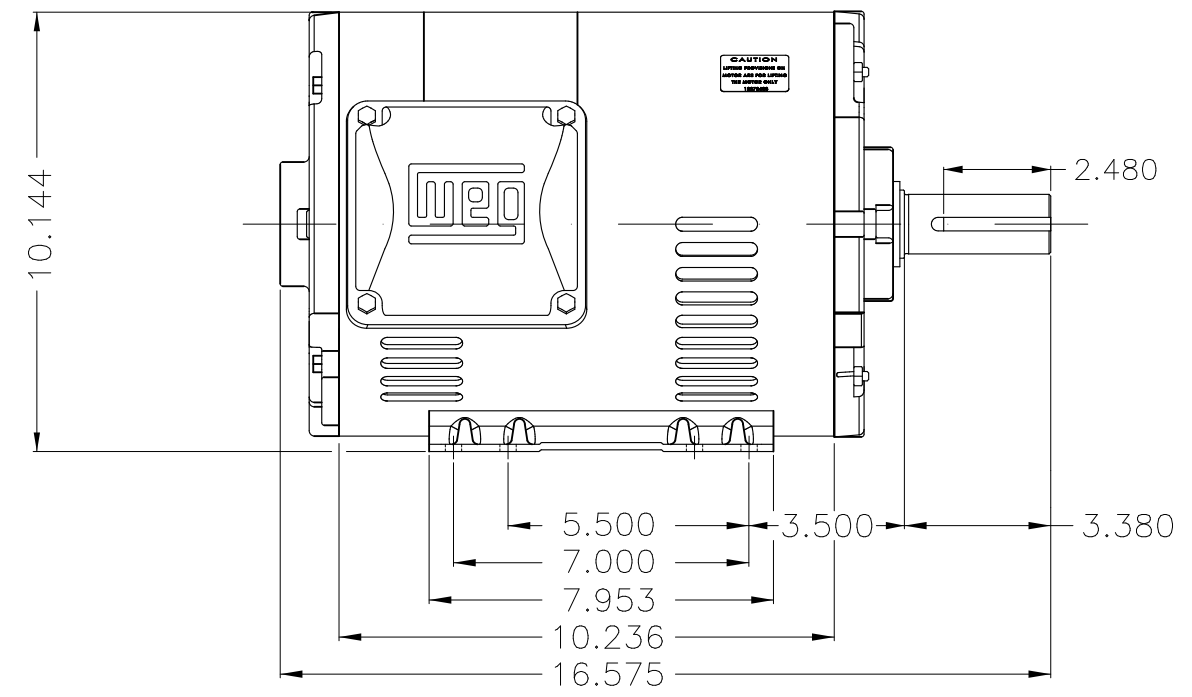
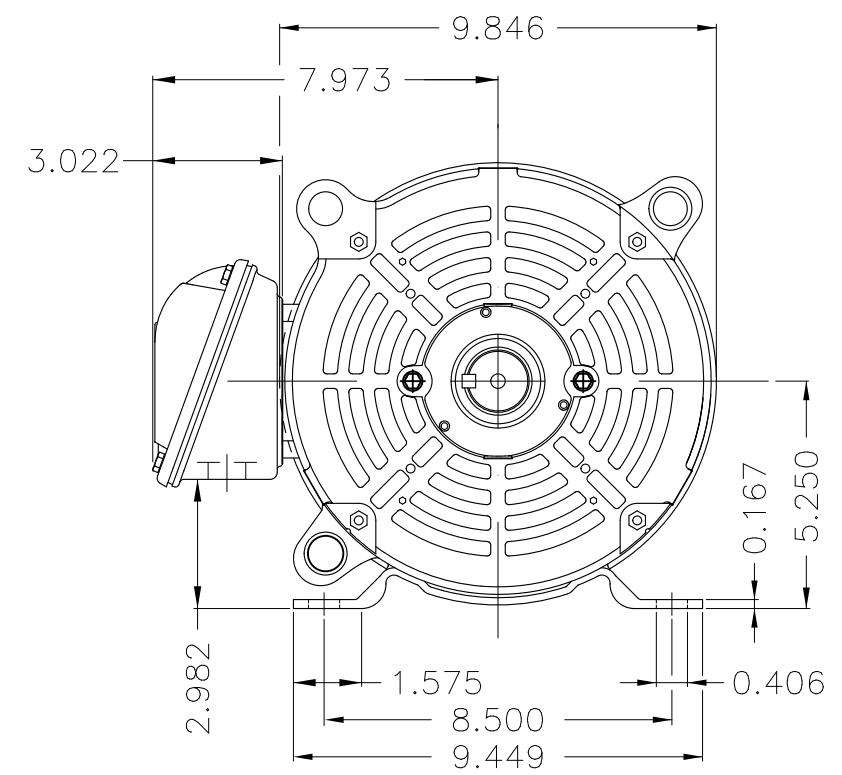
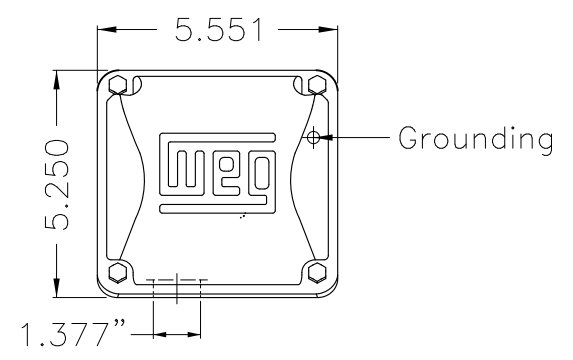
Rated current : 18.5/9.25 A  
 LRC : 7.2  
 Rated torque : 22.3 ft.lb  
 Locked rotor torque : 240 %  
 Breakdown torque : 320 %  
 Rated speed : 1770 rpm

Moment of inertia (J) : 1.03 sq.ft.lb  
 Duty cycle : Cont.(S1)  
 Insulation class : F  
 Service factor : 1.15  
 Temperature rise : 80 K  
 Design : B

Rev.	Changes Summary	Performed	Checked	Date
Performed by			Page 6 / 6	Revision
Checked by				
Date	20/04/2020			

Dimensões em polegada  
Dimensions in inches

THIS IS AN UPDATED REVISION, THE  
PREVIOUS ONE MUST BE DISREGARDED.



Internal AEGIS ground ring on the DE  
Bearing cap  
Color Munsell N 1 matte black  
Painting plan 207N  
Mounting F-1/B3R(D)

ECM	LOC	SUMMARY OF MODIFICATIONS	EXECUTED	CHECKED	RELEASED	DATE	VER
EXECUTED	USERADMIN	THREE P. MOTOR OPEN ROLLED STEEL NEMA PREM					
CHECKED		FRAME 213/5T ODP					
RELEASED		WEG code: 12674978					
REL DT	20.04.2020	WMO Jaragua do Sul	Product Engineering	SHEET	1 / 1		

7.5 HP 04 Poles 60Hz

A





**NEMA**  
**Premium**



3PT9  
C US LISTED



Energy Verified

MADE IN MEXICO

**MAT: 12674978 CC029A**

**W01.T00IC0X0N**

**MODEL 007180T3E213T-SG**

**07ABR2020 S/N:**

**PH 3 FR 213/5T HP(KW) 7.5(5.5) Hz 60**

**V 230/460 RPM 1770**

**A 18.5/9.25 DUTY CONT.**

**SFA 21.3/10.6 CODE H DES B**

**SF 1.15 INS CL F AT 80K AMB 40°C ENCL ODP**

**PF 0.82 NEMA NOM.EFF. 91.0%**

**ALT 1000 m.a.s.l. USABLE @ 208V 20.5A SF1.00**

**ALTERNATE RATING: 7.5HP 50Hz 190-220/380-415V SF1.15**

**22.2-19.6/11.1-10.4A 1455RPM EFF 86.7% (IE1) IEC 60034-1**



T1-BLU T2-WHT  
T3-ORG T4-YEL  
T5-BLK T6-GRY  
T7-PNK T8-RED  
T9-BRK RED

**INTERCHANGE ANY TWO LINE WIRES TO REVERSE THE ROTATION**

**Inverter duty motor For 60Hz use on VPWM 1000:1 VT, 5:1 CT**

**DE: 6208-ZZ ODE: 6206-ZZ MOBIL POLYREX EM**

**WARNING: Motor must be grounded in accordance with local and national electrical codes to prevent serious electrical shocks. Disconnect power source before servicing unit.**

**AVERTISSEMENT: Le moteur doit être mis à la terre conformément aux codes électriques locaux et nationaux afin d'éviter tout choc électrique grave. Déconnectez l'alimentation avant l'entretien de la machine.**

