

DATA SHEET

Single Phase Induction Motor - Squirrel Cage



Customer :																
Product line : Rolled Steel Single-Phase	Product code : 14607474 Catalog # : .7518OS1BFB56-S															
Frame : 56 Output : 0.75 HP (0.550 kW) Poles : 4 Frequency : 60 Hz Rated voltage : 115/208-230 V Rated current : 10.5/5.81-5.25 A L. R. Amperes : 68.2/37.8-34.1 A LRC : 6.5x(Code M) No load current : 8.00/3.45-4.00 A Rated speed : 1745 rpm Slip : 3.06 % Rated torque : 2.26 ft.lb Locked rotor torque : 280 % Breakdown torque : 270 % Insulation class : F Service factor : 1.25 Design : N	Locked rotor time : 18s (cold) 10s (hot) Temperature rise : 105 K Duty cycle : Cont.(S1) Ambient temperature : -20°C to +50°C Altitude : 1000 m.a.s.l. Cooling method : IC01 - ODP Mounting : F-1 Rotation ¹ : Both (CW and CCW) Noise level ² : 52.0 dB(A) Starting method : Direct On Line Approx. weight ³ : 26.5 lb															
<table border="1" style="width:100%; border-collapse: collapse;"> <tr> <td>Output</td> <td>25%</td> <td>50%</td> <td>75%</td> <td>100%</td> </tr> <tr> <td>Efficiency (%)</td> <td>57.4</td> <td>60.0</td> <td>66.0</td> <td>69.0</td> </tr> <tr> <td>Power Factor</td> <td>0.26</td> <td>0.46</td> <td>0.57</td> <td>0.66</td> </tr> </table>	Output	25%	50%	75%	100%	Efficiency (%)	57.4	60.0	66.0	69.0	Power Factor	0.26	0.46	0.57	0.66	Foundation loads Max. traction : 45 lb Max. compression : 73 lb
Output	25%	50%	75%	100%												
Efficiency (%)	57.4	60.0	66.0	69.0												
Power Factor	0.26	0.46	0.57	0.66												
Bearing type : Sealing : Lubrication interval : Lubricant amount : Lubricant type :	<table border="0" style="width:100%;"> <tr> <td style="text-align: center;"><u>Drive end</u></td> <td style="text-align: center;"><u>Non drive end</u></td> </tr> <tr> <td style="text-align: center;">6203 ZZ</td> <td style="text-align: center;">6202 ZZ</td> </tr> <tr> <td style="text-align: center;">Without Bearing Seal</td> <td style="text-align: center;">Without Bearing Seal</td> </tr> <tr> <td style="text-align: center;">-</td> <td style="text-align: center;">-</td> </tr> <tr> <td style="text-align: center;">-</td> <td style="text-align: center;">-</td> </tr> <tr> <td colspan="2" style="text-align: center;">Mobil Polyrex EM</td> </tr> </table>	<u>Drive end</u>	<u>Non drive end</u>	6203 ZZ	6202 ZZ	Without Bearing Seal	Without Bearing Seal	-	-	-	-	Mobil Polyrex EM				
<u>Drive end</u>	<u>Non drive end</u>															
6203 ZZ	6202 ZZ															
Without Bearing Seal	Without Bearing Seal															
-	-															
-	-															
Mobil Polyrex EM																
Notes																
This revision replaces and cancel the previous one, which must be eliminated. (1) Looking the motor from the shaft end. (2) Measured at 1m and with tolerance of +3dB(A). (3) Approximate weight subject to changes after manufacturing process. (4) At 100% of full load.	These are average values based on tests with sinusoidal power supply, subject to the tolerances stipulated in NEMA MG-1.															
Rev.	Changes Summary	Performed	Checked	Date												
Performed by																
Checked by			Page	Revision												
Date	16/04/2020		1 / 2													

LOAD PERFORMANCE CURVE

Single Phase Induction Motor - Squirrel Cage



Customer :

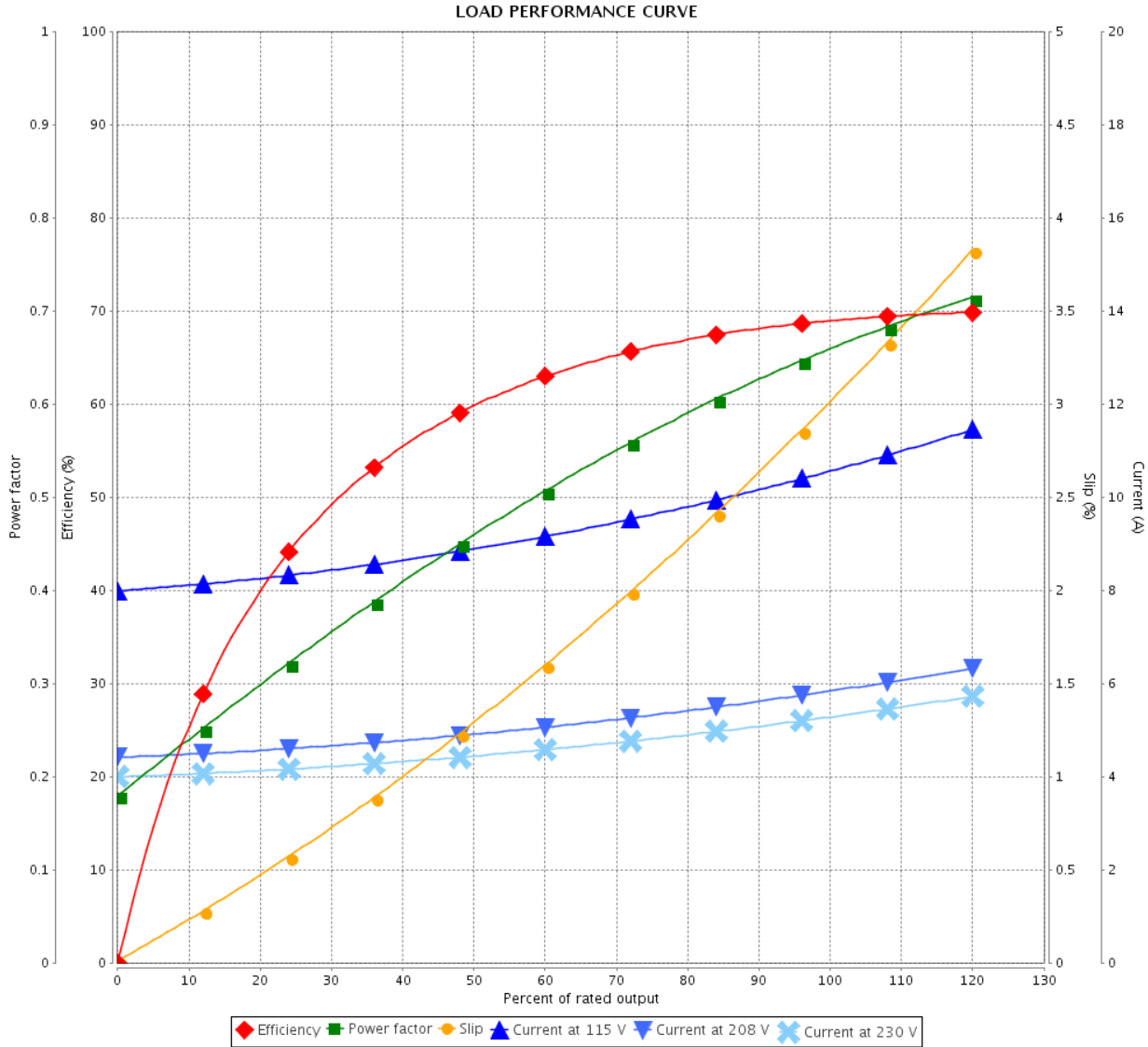
Product line : Rolled Steel Single-Phase

Product code :

14607474

Catalog # :

.7518OS1BFB56-S



Performance : 115/208-230 V 60 Hz 4P

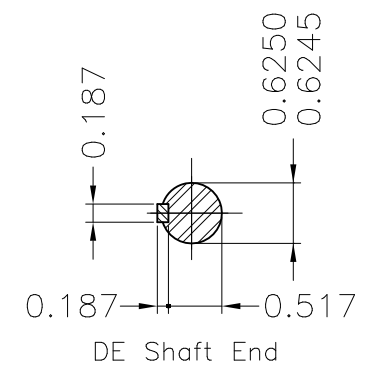
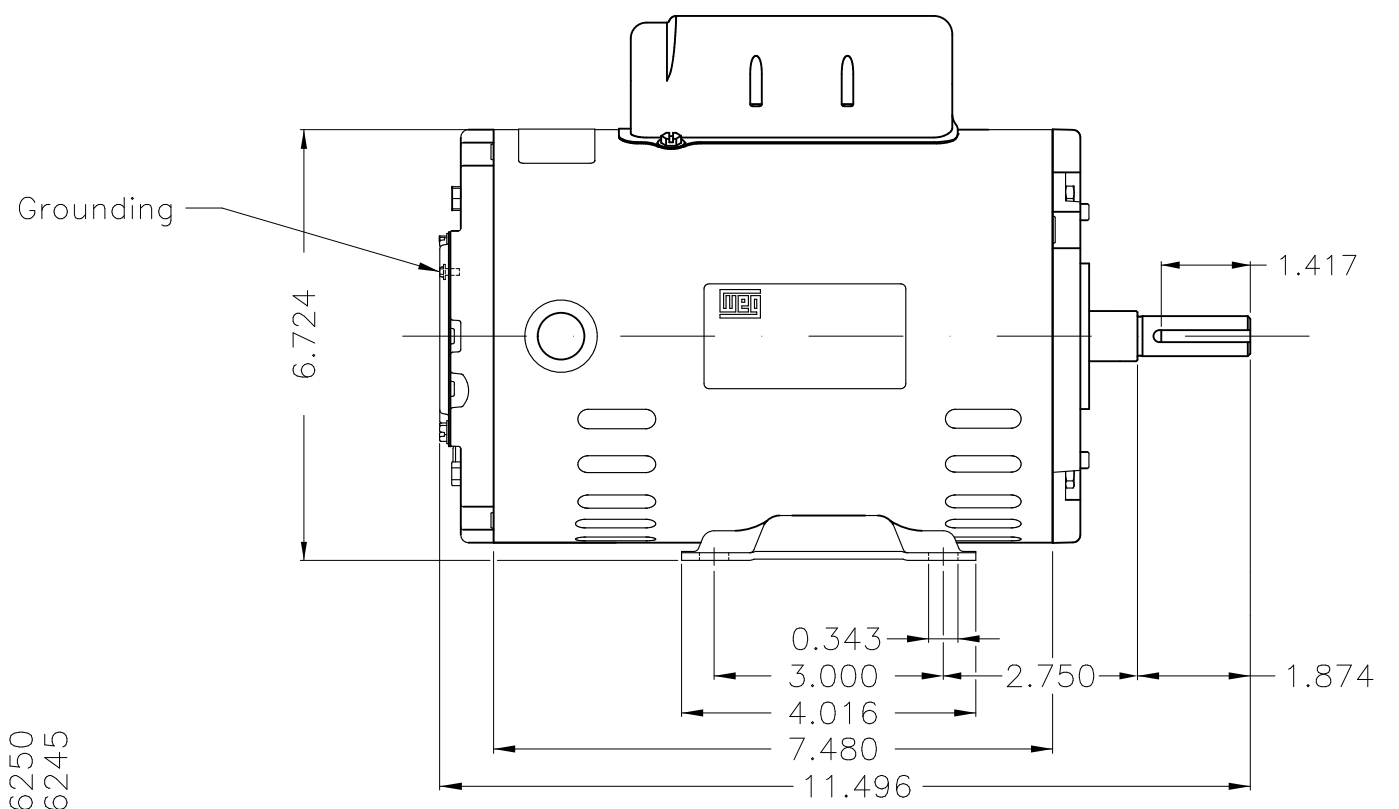
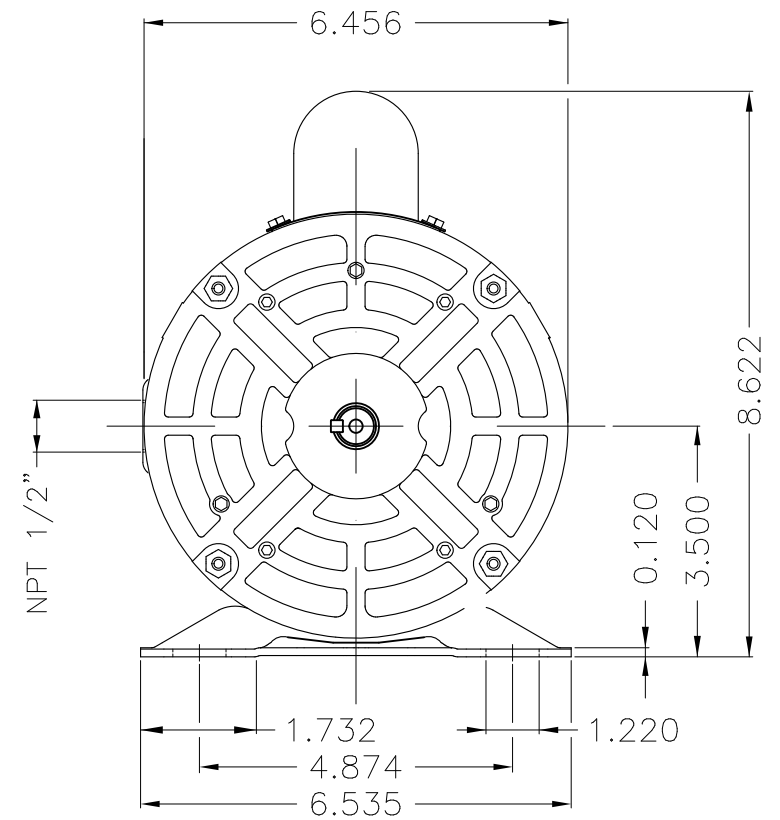
Rated current : 10.5/5.81-5.25 A
 LRC : 6.5
 Rated torque : 2.26 ft.lb
 Locked rotor torque : 280 %
 Breakdown torque : 270 %
 Rated speed : 1745 rpm

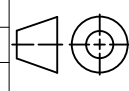
Moment of inertia (J)
 Duty cycle : Cont.(S1)
 Insulation class : F
 Service factor : 1.25
 Temperature rise : 105 K
 Design : N

Rev.	Changes Summary	Performed	Checked	Date
Performed by			Page 2 / 2	Revision
Checked by				
Date	16/04/2020			

Dimensões em polegada
Dimensions in inches

THIS IS AN UPDATED REVISION, THE
PREVIOUS ONE MUST BE DISREGARDED.



Mounting F-1/B3R(D)									
ECM	LOC	SUMMARY OF MODIFICATIONS			EXECUTED	CHECKED	RELEASED	DATE	VER
EXECUTED	USERADMIN	 SINGLE PHASE MOTOR OPEN ROLLED STEEL FRAME 56 ODP WEG code: 14607474							
CHECKED									
RELEASED									
REL DT	16.04.2020		WMO	Jaragua do Sul	Product Engineering	SHEET	1 / 1		

0.75 HP 04 Poles 60Hz

