

RAYPAK SERVICE INSTRUCTIONS

HI-DELTA 50K and 90K BURNERS MODELS 302-2342 A,B& C MODELS KITS 007442F & 007617F

IMPORTANT NOTICE

These instructions are for use by qualified personnel specifically trained and experienced in the installation of this type of heating equipment and related system components. Installation and service personnel may be required to be licensed in some states. Persons not qualified shall not attempt to install this equipment nor attempt repairs according to these instructions.

DANGER - SHOCK HAZARD

Make sure electrical power to the heater is disconnected to avoid damage to components, potential serious personal injury or death. Make sure the gas to the heater has been shut off.

WARNING

Make sure **water, gas & power** have been turned **OFF** before making any repairs or servicing this equipment.

SCOPE

The kit provides replacement 50K and 90K Burners provided on Hi-Delta Models 302-2342. & Delta LTD Models 989-2339 A, B & C MODELS

REQUIRED TOOLS:

- Phillips screwdriver
- (2) Pipe or crescent wrenches
- (1) 9/16" Open end wrench
- (1) 5/16" nut driver or socket wrench

THIS KIT CONTAINS:

- (1) 50k OR 90k Burner
- (3) #10 x 1/2 stainless steel screws



HI-DELTA BURNER REPLACEMENT PROCEDURE

1. Turn off the electrical Power at the breaker; the Hi-Delta's breaker and at its' power switch.
2. Turn off the water and the pump(s).
3. Turn off the gas and make sure ALL the Manual Gas Valve(s) in the gas supply are in the OFF position.
4. Remove the upper front access panel(s) by unscrewing the recessed Phillips head screws that fasten the upper panel(s) to the cabinet. The screw quantity varies with Model size. Set them aside carefully. (See **FIGURE 1**) Note: Oldest models may not be recessed.
5. Turn the manual gas "A" valves; located under each electric gas valve to the "OFF" position
6. Remove the recessed perimeter screws that fasten the lower front panel to the cabinet. (See **FIGURE 2**). Set the panel aside carefully.
7. Using a pair of pipe or adjustable wrenches, loosen the pipe union(s) that connect the gas manifold(s) to the burners. Remove the lower half of the Union from the original manifold. (See **FIGURE 3**)
8. Remove the soft plastic gas manifold grommet. (See **FIGURE 4**)
9. Separate the upper and lower gas manifolds at the pipe union. (See **Figure 5**)
10. Remove the screws that fasten the lower the gas manifold to the base. (See **FIGURE 6**)
11. Remove the manifold. (See **FIGURE 7**)
12. Remove the old burner. (See **Figure 8**)
13. Install the new burner. Make sure the orifices (mounted to the manifold) are centered properly inside each replaced burner.
14. Install all the #10 screws that fasten the Manifold's feet to the cabinet base. (See **FIGURE 6**)

Reverse steps 11 to 1 to bring the appliance back into operation.

FIGURE 1

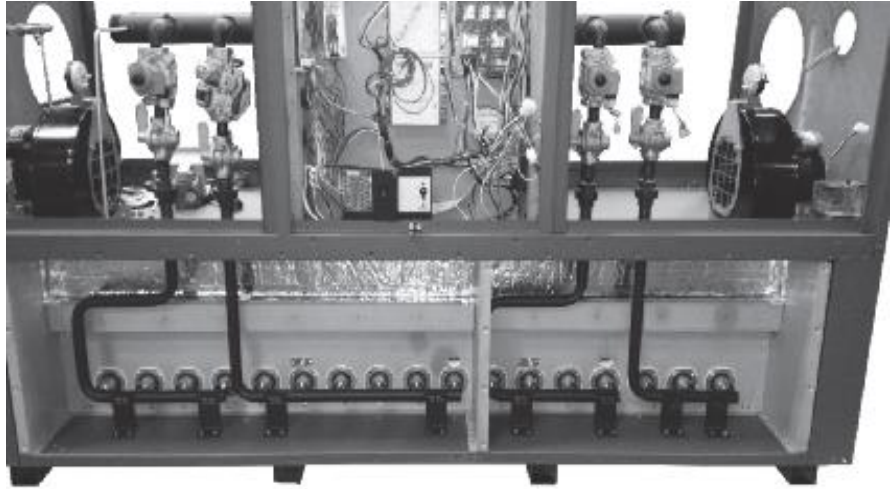


FIGURE 2

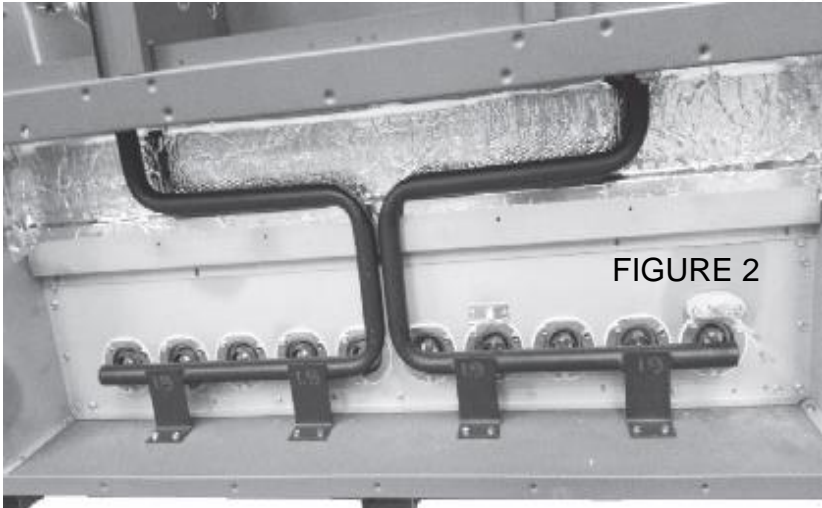


FIGURE 4

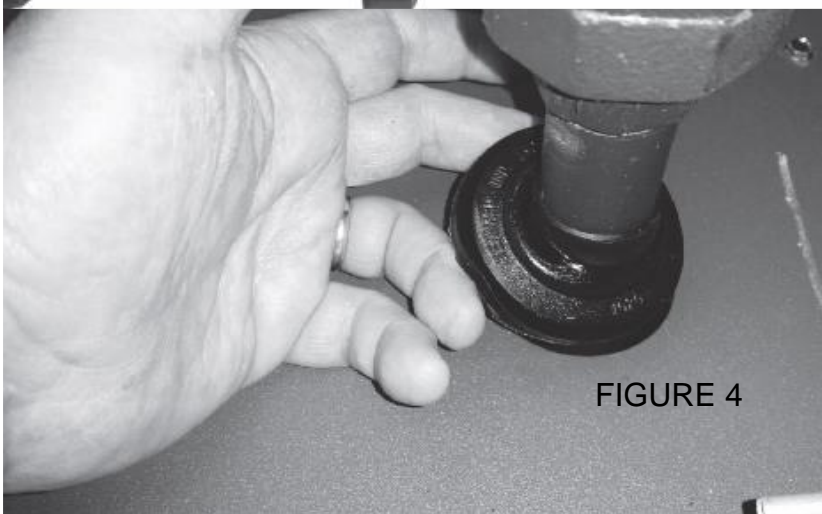
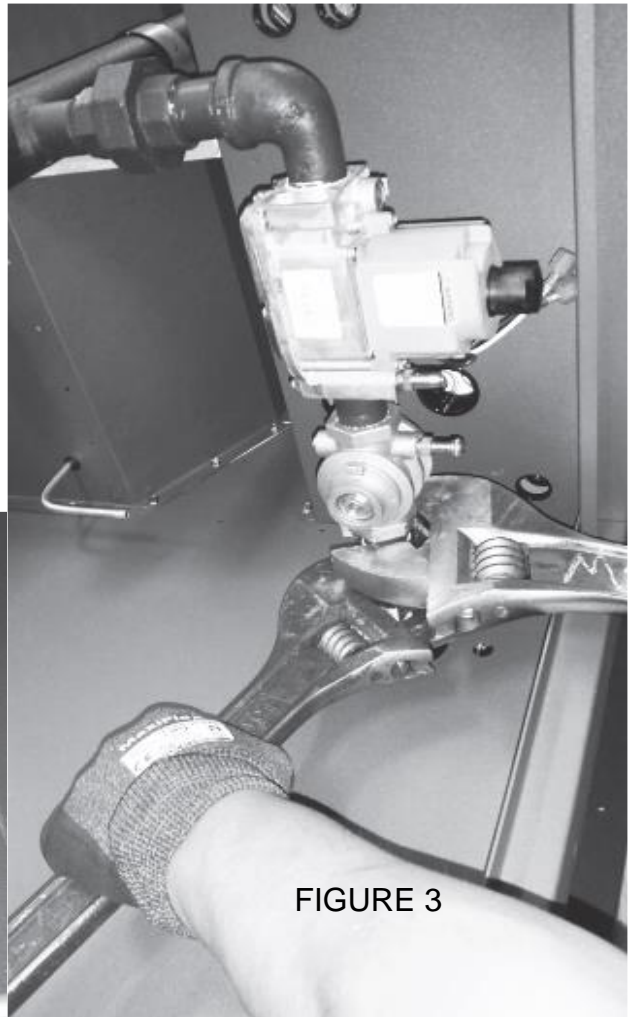
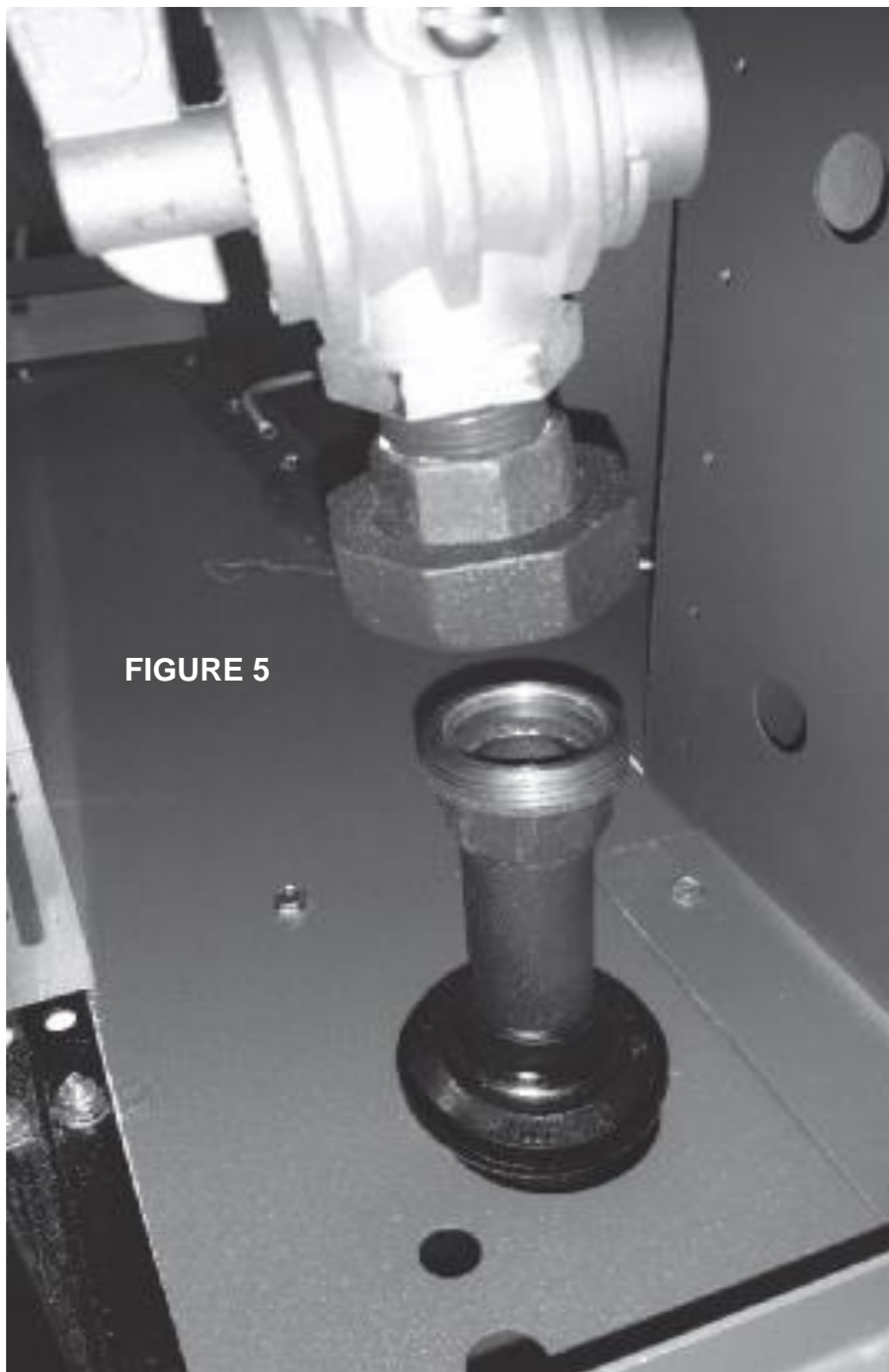


FIGURE 3





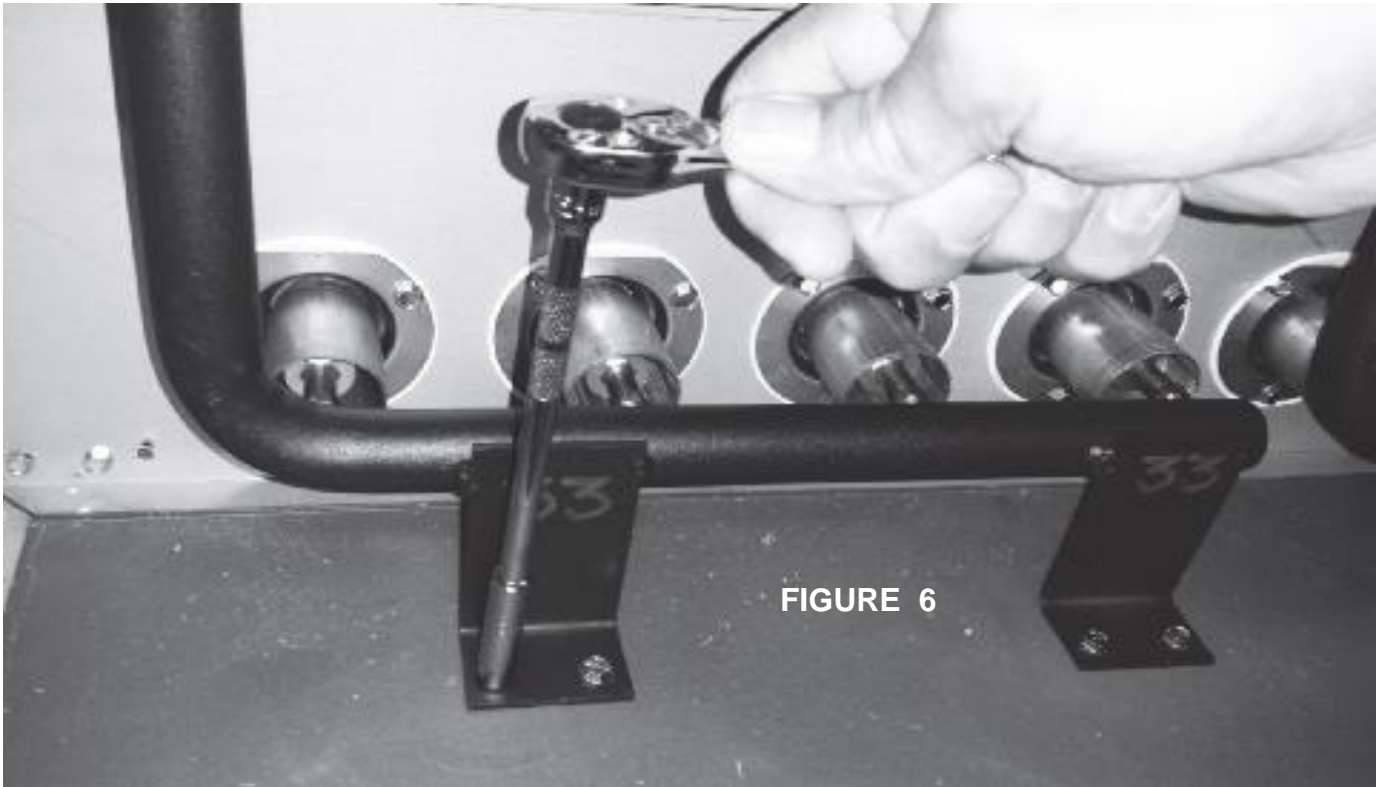


FIGURE 6

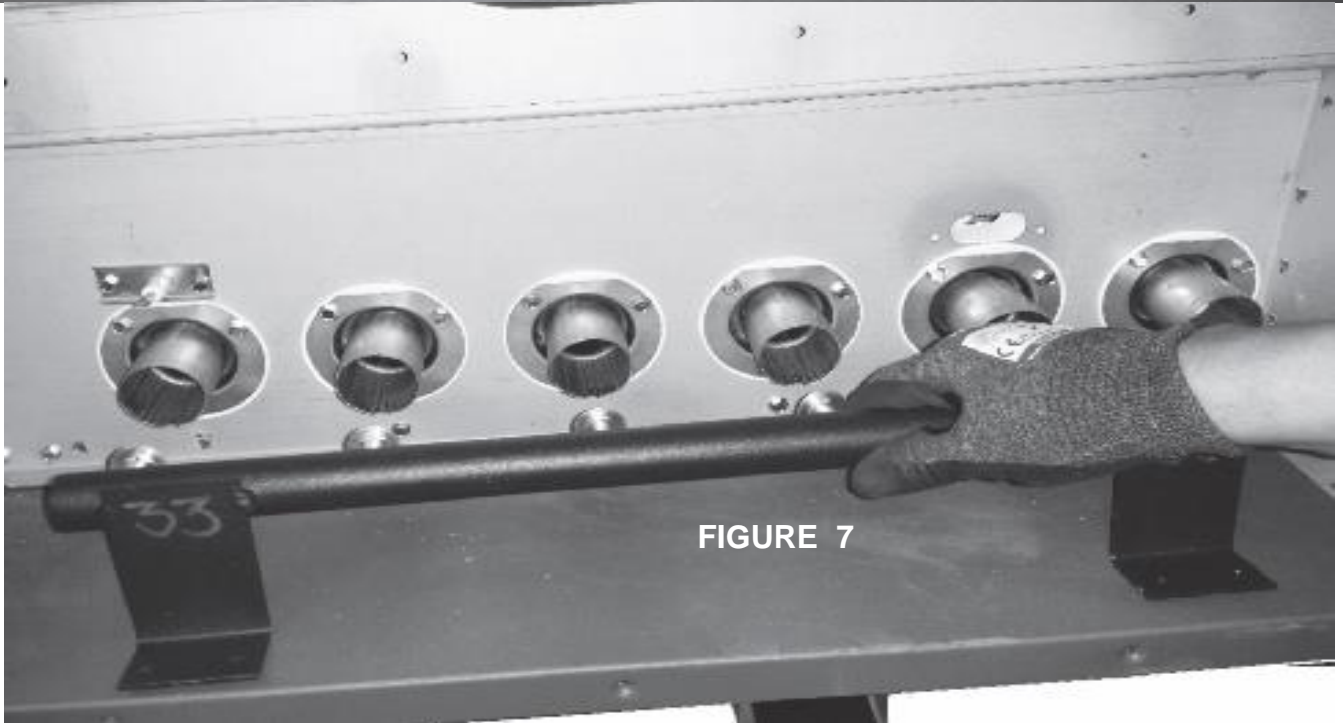


FIGURE 7

