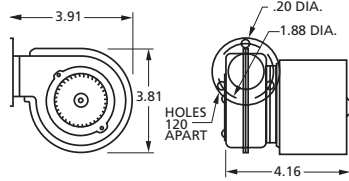


Centrifugal Blowers

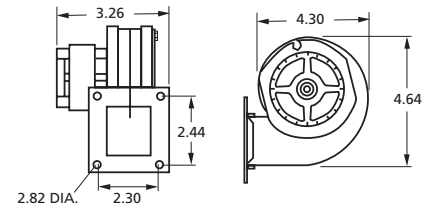
MARS SERIES **079**



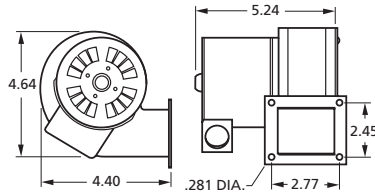
50745-D500



A167

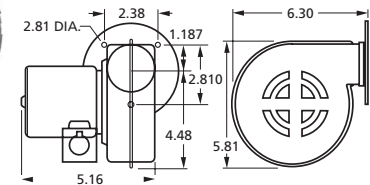


B30



50747-D500

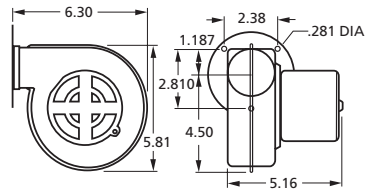
50747-D600



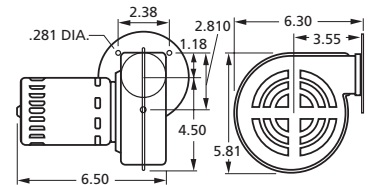
50747-D230



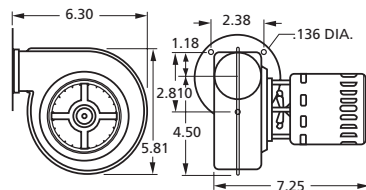
50747-D401



50748-D500



A063



50748-D600

FASCO

MODEL#	CFM AT STATIC PRESSURE SHOWN STATIC PRESSURE (INCHES OF WATER)										NAMEPLATE CFM	VOLTS	FREQ.	NO. OF SPEEDS	RPM@ FREE AIR	AMPS@ FREE AIR	BRNG
	0.1	0.2	0.3	0.4	0.5	0.6	0.7	0.8	0.9	1							
50745-D500	6.5	—	—	—	—	—	—	—	—	—	15	115	60	1	3100	.2	SLV
A167	30	27	25	5	—	—	—	—	—	—	30	115	60	1	2900	.4	SLV
B30	40	37	32	22	6	—	—	—	—	—	45	115	60	1	3200	.59	SLV
50747-D500	47	42	37	33	21	7	—	—	—	—	60	115	60	1	3200	.52	SLV
50747-D600	47	42	37	33	21	7	—	—	—	—	60	115	60	1	3200	.52	SLV
50747-D230	47	42	37	33	21	7	—	—	—	—	60	208-230	50/60	1	3200	.26	SLV
50747-D401	47	42	37	33	21	7	—	—	—	—	60	115	50/60	1	3200	.49	SLV
50748-D500	64	60	56	52	47	42	37	—	—	—	65	115	60	1	2900	.81	SLV
50748-D700	64	60	56	52	47	42	37	—	—	—	65	115	60	1	2900	.74	SLV
A063	69	65	62	57	52	42	37	30	—	—	65	230	60	1	3100	.6	BALL