

Duct Temperature Sensor, 100K ohm Thermistor

Product Description

The single point 100K ohm Duct Temperature Sensor assembly is inserted into the duct to provide an input to an equipment controller. It can be mounted on the outside of a square or round duct. The mounting plate is made of thin steel, which can be easily bent to conform to round or irregular contour ducts. See Figure 1.

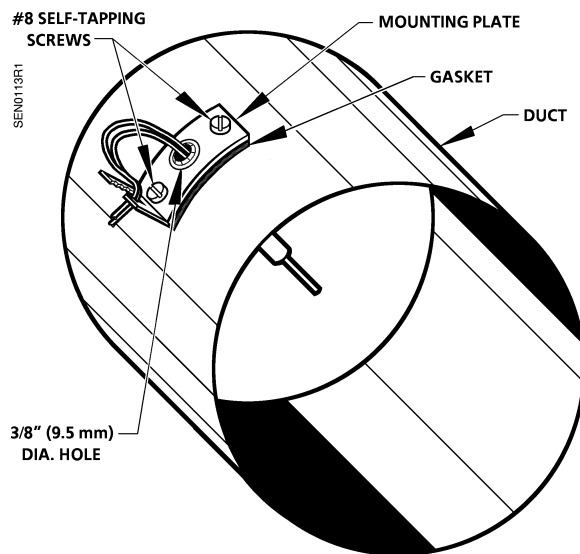


Figure 1. Sensor Assembly Mounted on a Round Duct.

Contents

Shipping carton includes: Sensor assembly with gasket, two No. 8 self-tapping screws, and two wire connectors.

Product Number

536-811

Required Tools

- Medium-duty electric drill with 3/8-inch and 1/8-inch (9.5 mm and 3 mm) drill bits
- Power screwdriver with 1/4-inch hex extension or medium, flat-blade screwdriver

Expected Installation Time

12 minutes

Prerequisites

- Review the instructions before beginning.
- Appropriate field wiring must be in place.

NOTE: All wiring must comply with National Electrical Code (NEC) and local regulations.

Installation

1. Drill a 3/8-inch (9.5 mm) diameter hole on the side of the duct where the sensor is to be mounted.

NOTE: If you cannot use the self-tapping feature of the screws provided, use Figure 3 as a template and drill one 3/8-inch (9.5 mm) center hole and two 1/8-inch (3 mm) diameter holes where the sensor should be located.

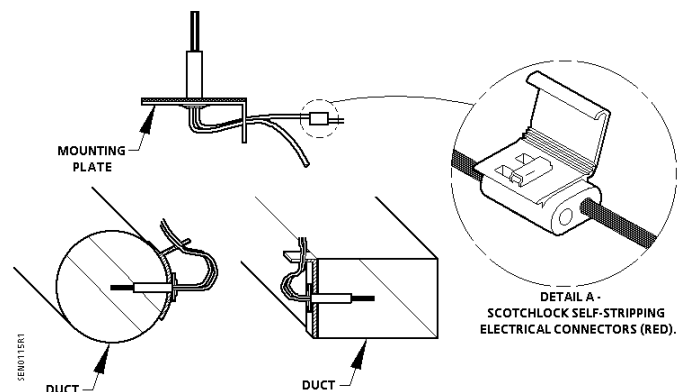


Figure 2. Single Point Thermistor Sensor Mounted on a Square or Round Duct.

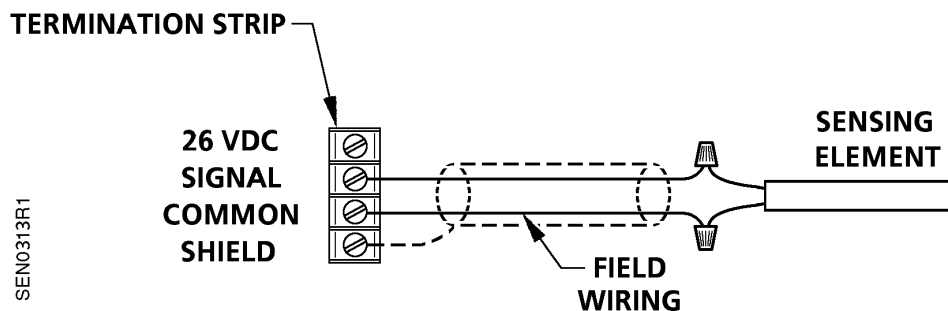
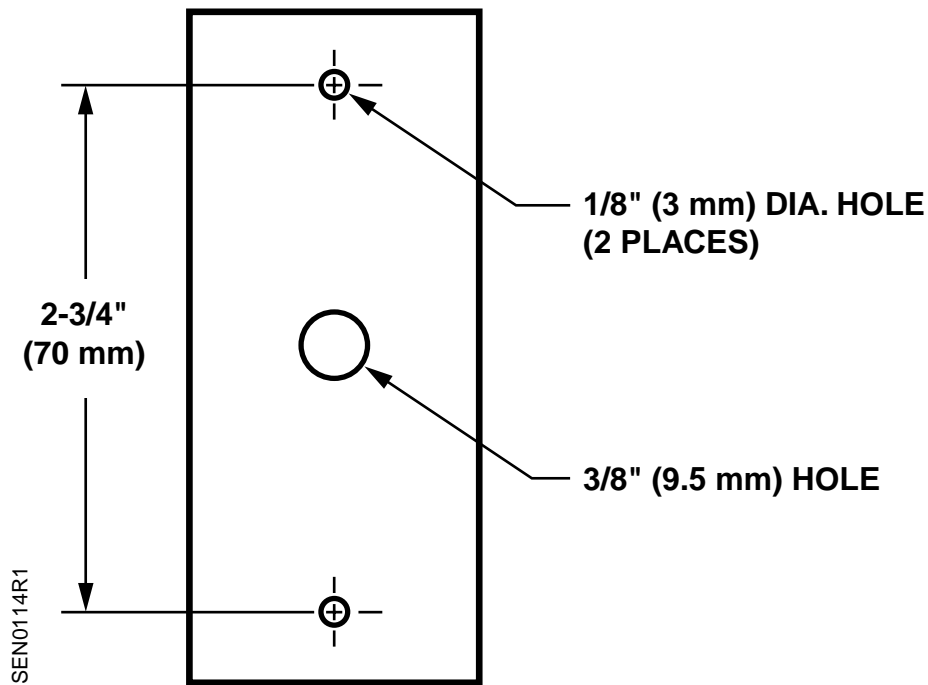
2. Insert the sensor into the 3/8-inch hole in the duct.
3. Secure the sensor assembly to the duct with the two No. 8 self-tapping screws provided.

Installation, Continued

4. Use the two 3M[®] Scotchlock self-stripping red electrical connectors to wire the sensor to the field wiring. No wire stripping is required to use the connectors. See *Detail A* in *Figure 2*. These connectors will accept 22 to 16 AWG solid or stranded wire.

5. After wiring connections are made, fasten the wires to the mounting plate with cable ties or other suitable means to relieve any strain.

The installation is now complete.



- NOTE:** 1. Some Siemens Building Technologies controllers may require a shield termination.
2. For individual panel wiring details, refer to the appropriate hardware manual.

Information in this publication is based on current specifications. The company reserves the right to make changes in specifications and models as design improvements are introduced. Scotchlock & 3M are registered trademarks of Minnesota Mining & Manufacturing Co. © 2001 Siemens Building Technologies, Inc.