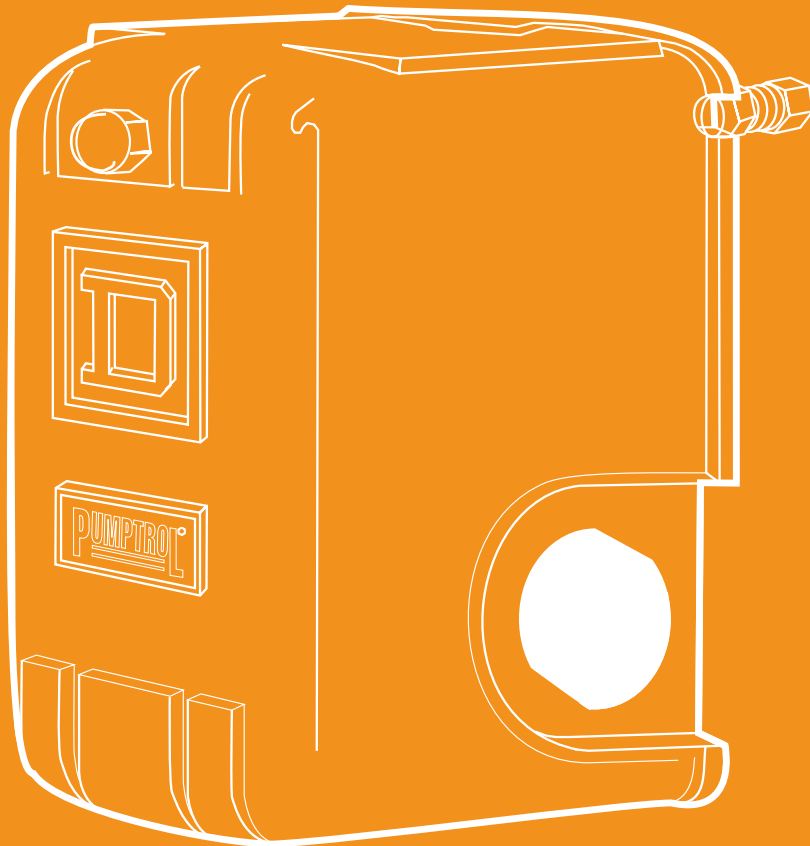


Control Switches



> Float and Pressure Switches

For over 65 years, our Square D brand Pumptrol® FSG Pressure Switches have been used to monitor and control electrically driven water pumps. A long-time industry standard, you can trust that Square D brand switches will do the necessary job every time.



Square D introduced the FSG water pump switch in 1947. Today many more Square D brand switches are installed on pumps than any other switch available on the market.

Switches - Float

Sump or Open Tank Style – Type FG

Catalog #	UPC Code	Type	Description
9036FG	Special Order		Universal kit which includes switch, plastic center hole float, rod and attaching hardware
9036FG30	Special Order	Switch only	Contacts close on liquid rise 2-pole NEMA 1
9049A60	Special Order	Float	Plastic center hole float
9049A61	Special Order	Tubing	33.75 inch aluminum rod, 2 float stop assemblies and attaching hardware

Sump or Open Tank Style – Type DG, GG

Catalog #	UPC Code	Type	Description	Force up to trip	Force down to Trip	Level Position
9036DG2*	Special Order	Switch only	Contacts close on liquid Rise	9 oz.	8 oz.	n/a
9036DG2R	7-85901-57643-3	Switch only	Contacts open on liquid rise; universal float and rod kit consists of 1-7"	9 oz.	8 oz.	n/a
9036GG2*	Special Order	Switch only	Contacts close on liquid rise; top tapped 304 stainless steel float, 2-2½'	33 (21) oz.	39 (27) oz.	short, (long)
9036GG2R*	Special Order	Switch only	Contacts open on liquid rise; brass rods with connector and 2-stop collars	34 (21) oz.	40 (27) oz.	short, (long)
9049A6*	Special Order	Tapped-at-Top	#304 SS float; 5' brass tubing and two stops	-	-	-
9049A6S	Special Order	Floats	#304 SS float; 5' SS tubing and two stops	-	-	-
9049A6C	Special Order	Center-Hole	#304 SS float; 5' brass tubing and four stops	-	-	-
9049A6CS	Special Order	Floats	#304 SS float; 5' SS tubing and four stops	-	-	-
9049T1	Special Order	Additional Tubing	2½' brass tubing with connector	-	-	-
9049T1S	Special Order	Additional Tubing	2.5 foot SS tubing with connector	-	-	-



Pumptrol Float Switches Class 9036

• Pedestal Style Type FG30

- Designed for liquid level control with electric motor operated pumps either directly or through a magnetic starter
- Can also be used to activate alarms in liquid level control systems
- Upward or downward movement of the lever arm of the Class 9036 Type FG30 float switch controls the ON and OFF positions corresponding to the water level changes required to turn the pump or alarm on and off

• Sump or Open Tank Type DG, GG

- Double-pole rated
- 2 HP @ 115 Vac and 3 HP @ 230 Vac
- Designed for automatic control of liquid level in open sumps or tanks handling small motor loads directly or through a starter
- NEMA Type 1 Indoor Enclosure
- Type GG – heavier duty for light commercial and industrial applications



9036DG2



9036GG2



9036FG

* Item may require additional lead time.

Switches - Float

Closed Tank – Screw-in Style – Type HG

Catalog #	UPC Code	Description	Float Position▲	Float Rod Angle	Approx. Water Level Change (Field Adjustable)	
					Minimum	Maximum
9037HG33*	Special Order	Contacts close on liquid rise	Right	45° offset	2"	5"
9037HG32	Special Order		Left	90° offset	2"	11½"
9037HG31	Special Order	Contacts close on liquid rise	Right	90° offset	2"	11½"
9037HG30	Special Order		Left	90° offset	2"	8¼"

Closed Tank – Flange Mount Style – Type EG

Catalog #	UPC Code	Description	Post Length
9037EG8	Special Order	For minimum water level change	2 ⁵ / ₈ "
9037EG9	Special Order	For maximum water level change	2 ⁵ / ₈ "



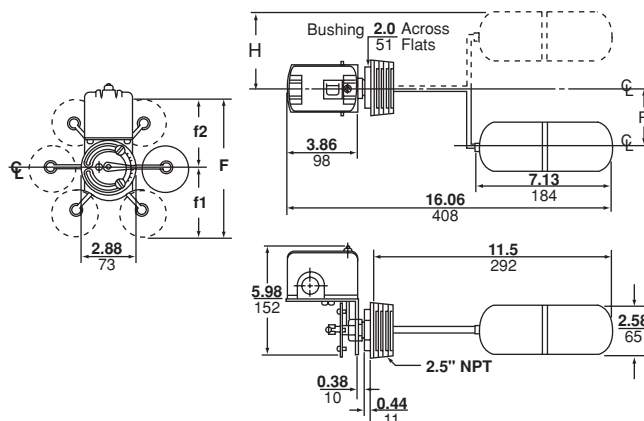
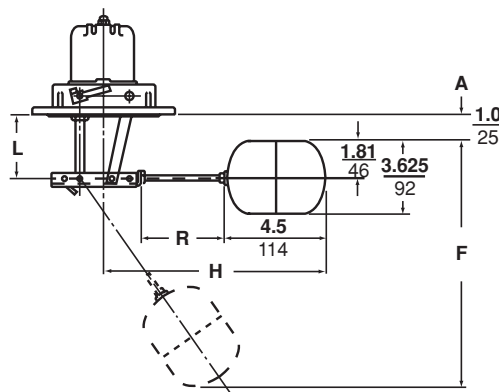
Pumptrol Float Switches Class 9037

• Closed Tank-Type HG

- NEMA Type 1 Indoor Enclosure
- Double-pole rated
- 2 HP @ 115 Vac and 3 HP @ 230 Vac
- Type HG switch is attached to tank by means of 2½" screw connection
- Switches come complete with stainless steel float and rod
- Buna N Quad-Ring® seal is used between the float rod and sealing connector
- Can withstand tank pressures up to 50 PSIG at temperatures up to 220°F

• Closed Tank-Type EG

- NEMA Type 1 Indoor Enclosure
- Double-pole rated
- 2 HP @ 115 Vac 3 HP @ 230Vac
- Switches are flange mounted and float movement is transmitted through a stuffing box
- Can be built up to meet exact requirements from the basic switch, float rod and float groups
- Switch may be assembled in the field to give contacts that open on liquid rise or close on liquid rise



9037EG



9037HG

* Item may require additional lead time.

▲ Viewed from front of switch facing indicator scale.

QUAD-RING® is a registered trademark of Minnesota Rubber Co.

VITON® is a registered trademark of DuPont Co.