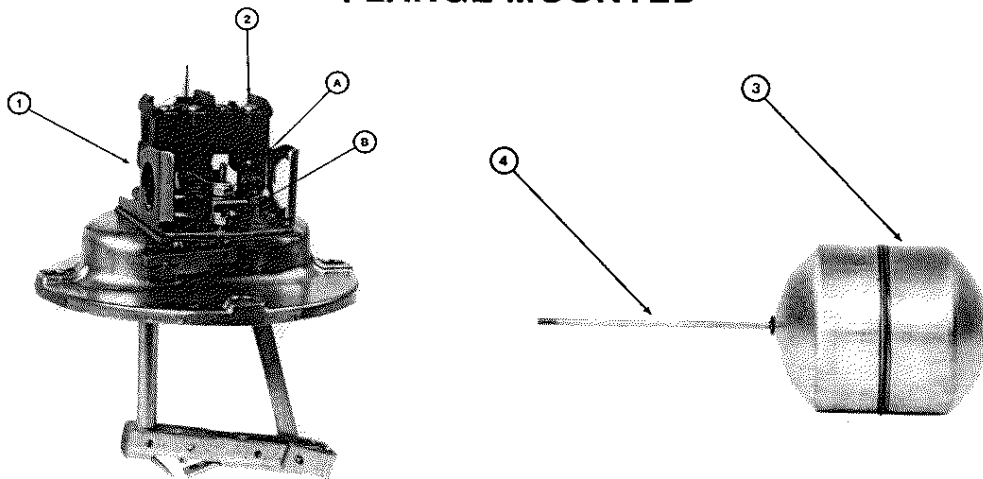




Class 9037 Type EG  
**TANK FLOAT SWITCH**  
 FLANGE MOUNTED



**REPLACEMENT PARTS**

Item Number	Description	Nbr. Req'd	Part Number
1	Switch mechanism .....	1	2666-C5-G3
2	Set of movable and stationary contacts .....	1	9998 PC-242
	Replacement cover .....	1	S65079-701-50
	(specify complete class and type number)		

**ACCESSORIES**

Item Number	Description	Nbr. Req'd	Part Number
3	Float 3 5/8" x 4 1/2" (304 stainless steel) .....	1	9049 EF-1
	Float 3 5/8" x 4 1/2" (316 stainless steel) (Form Z5 only) .....	1	9049 EF-2
4	Float rod 1 3/4" stainless steel .....	1	9049 ER-1
	Float rod 2 1/2" stainless steel .....	1	9049 ER-2
	Float rod 3 1/4" stainless steel .....	1	9049 ER-3
	Float rod 5 1/4" stainless steel .....	1	9049 ER-5
	Float rod 7 1/4" stainless steel .....	1	9049 ER-7
	Float rod 12 1/4" stainless steel .....	1	9049 ER-12

**INSTRUCTIONS**

**APPLICATION** — For automatically controlling the liquid level in a closed tank by float movement.

**ADJUSTMENT** — Switches are shipped from the factory set for a specified float travel with a given length of rod. Reasonable adjustment of float travel can be made in the field. A guard is provided to prevent entanglement of operating lever with load and line wires. Remove guard by loosening **not removing** holding screws. By turning adjusting nuts A downward and B upward float travel will be decreased. The reverse of this operation will increase float travel. **Caution:** Mechanism binding will result if approximately 1/16 inch clearance is not maintained between the adjusting nuts -Items A and B and the operating lever (C). Check the clearance when the contacts are closed.

**MOUNTING** — Four bolt holes are provided in the flange for direct mounting to tank. Flange gaskets are not provided.

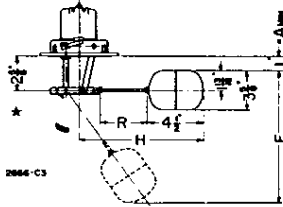
**MOTOR PROTECTION** — A control of this type does not afford motor protection. However, it is quite frequently used as a pilot to operate a starter providing this desirable feature. Square D Company manufactures a complete line of motor protective devices, information on which will be sent upon request.

**WARNING** — To avoid shock hazard, disconnect all power before installing or servicing device.



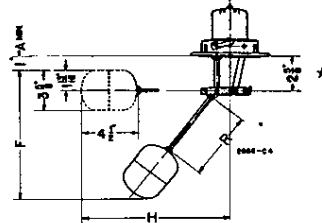
**APPROXIMATE DIMENSIONS**

The recommended size of hole in the tank is 4 3/16".



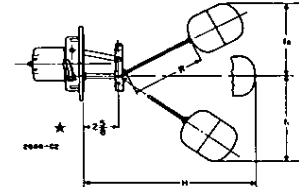
**Float POSITION 1**

Vertical mounting, sump operation contacts close on rising level.



**Float POSITION 2**

Vertical mounting, standard operation contacts close on falling level.



**Float POSITION 3**

Horizontal Mounting Standard operation or sump operation depending on position of switch. To reverse operation turn control through 180° around horizontal center line.

\* On Long Post Models: EG, EW, ER Types 10 and 13 this distance is 4 1/16" inches. "A" minimum = 3 1/16"

**ORDER ROD KITS FOR THE 9037 TYPE E FROM THIS TABLE FOR POSITION # 1**

Class 9049 Rod Kits	EG-8, EW-8, ER-8; EG-10, EW-10, ER-10										EG-9, EW-9, ER-9; EG-13, EW-13, ER-13									
	"R"		"H"		EG-8, EW-8, ER-8 "A"		EG-10, EW-10, ER-10 "A"		"F"		Water Level Change		EG-9, EW-9, ER-9 "A"		EG-13, EW-13, ER-13 "A"		"F"		Water Level Change	
					Min	Max	Min	Max					Min	Max	Min	Max				
Type ER-1	1 3/4"	8 1/2"	1"	2"	3 1/16"	4 1/16"	4 3/8"	6"	1 3/4"	3"	7 1/2"	1"	4"	3 1/16"	6 1/16"	6"	9"	3"	6"	
ER-2	2 3/4"	9"	1"	2"	3 1/16"	4 1/16"	4 3/8"	6 1/4"	1 3/4"	3 3/4"	8 1/4"	1"	4 1/2"	3 1/16"	6 1/16"	6 1/2"	9 3/4"	3 3/4"	6 1/4"	
ER-3	3 1/2"	9 1/2"	1"	2"	3 1/16"	4 1/16"	4 3/8"	6 1/2"	1 3/4"	3 3/4"	9"	1"	5"	3 1/16"	7 1/16"	6 1/2"	10 1/4"	3 3/4"	7 1/2"	
ER-5	5 1/4"	11 1/4"	1"	2 1/2"	3 1/16"	4 1/16"	4 3/8"	6 3/4"	1 3/4"	3 3/4"	11"	1"	6"	3 1/16"	8 1/16"	6 1/2"	11 1/2"	3 3/4"	8 1/2"	
ER-7	7 1/4"	13 1/4"	1"	3"	3 1/16"	5 1/16"	5"	7 1/4"	2"	4 1/4"	12"	1"	7 1/2"	3 1/16"	9 1/16"	6 1/2"	13"	3 3/4"	10"	
ER-12	12 1/4"	18 1/4"	1"	4 1/2"	3 1/16"	6 1/16"	5 3/8"	9"	2 3/4"	6"	18"	1"	9 1/2"	3 1/16"	11 1/16"	9"	17 1/2"	6"	14 1/2"	

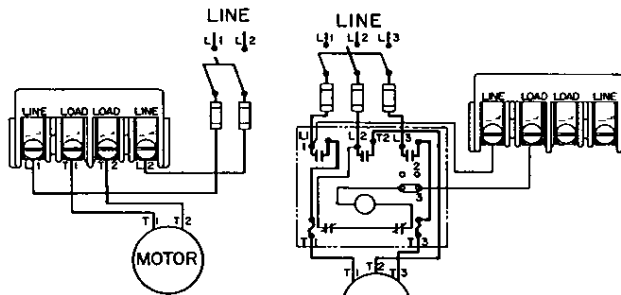
**ORDER ROD KITS FROM THIS TABLE FOR POSITION # 2**

Class 9049 Rod Kits	EG-9, EW-9, ER-9; EG-13, EW-13, ER-13											
	"R"		"H"		EG-9, EW-9, ER-9 "A"		EG-13, EW-13, ER-13 "A"		"F"		Water Level Change	
					Min	Max	Min	Max				
Type ER-1	1 3/4"	7 1/2"	1"	3"	3 1/16"	5 1/16"	5 1/2"	7 1/4"	2 3/4"	4 1/2"		
ER-2	2 3/4"	8 1/2"	1"	3 1/2"	3 1/16"	5 1/16"	5 3/4"	8 1/4"	2 3/4"	5 1/4"		
ER-3	3 1/2"	9"	1"	4"	3 1/16"	6 1/16"	6"	9"	3"	6"		
ER-5	5 1/4"	11 1/4"	1"	5"	3 1/16"	7 1/16"	6 3/4"	10 3/4"	3 3/4"	7 3/4"		
ER-7	7 1/4"	13 1/4"	1"	6"	3 1/16"	8 1/16"	7 3/4"	12 3/4"	4 3/4"	9"		
ER-12	12 1/4"	18 1/4"	1"	8 1/2"	3 1/16"	10 1/16"	10 1/2"	17 3/4"	7 3/4"	12 1/4"		

**ORDER ROD KITS FROM THIS TABLE FOR POSITION # 3**

Class 9049 Rod Kits	EG-9, EW-9, ER-9; EG-13, EW-13, ER-13											
	"R"		"H"		EG-9, EW-9, ER-9		EG-13, EW-13		"F"		Water Level Change	
					Min	Max	Min	Max				
Type ER-1	1 3/4"	9"	1 1/2"	2 1/2"	4 1/2"	5 1/2"	9"	2 1/2"	5 1/2"			
ER-2	2 3/4"	9 3/4"	1 1/2"	2 3/4"	4 1/2"	5 1/2"	9"	2 1/2"	5 1/2"			
ER-3	3 1/2"	10 1/2"	1 1/2"	3"	5"	6"	10"	2 3/4"	6 3/4"			
ER-5	5 1/4"	12 1/2"	1 1/2"	3 3/4"	6"	7"	12"	3 3/4"	8 3/4"			
ER-7	7 1/4"	14 1/2"	1 1/2"	4 3/4"	7 1/2"	8 1/2"	14"	4 1/2"	10 1/2"			
ER-12	12 1/4"	19 1/2"	1 1/2"	6 1/2"	8 1/2"	9 1/2"	19"	5 1/2"	15 1/2"			

**TYPICAL WIRING DIAGRAM**



DOUBLE POLE SINGLE PHASE Inherent Protection

Float Switch with A.C. Starter

**2 POLE ELECTRICAL RATINGS**

Voltage	Single Phase AC	Polyphase AC	DC
115	2 HP	3 HP	1/2 HP
230	3 HP	5 HP	1/2 HP
460/575		1 HP	
32			1/4 HP

Control Circuit Rating: A600