

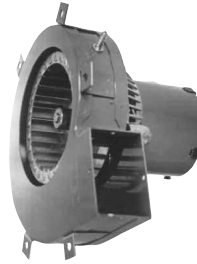
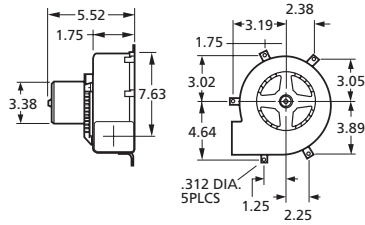


# Centrifugal Blowers

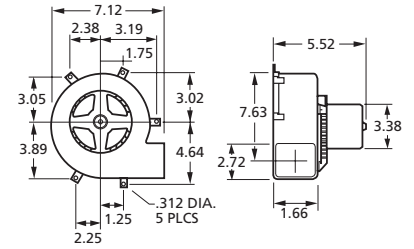
MARS SERIES **079**



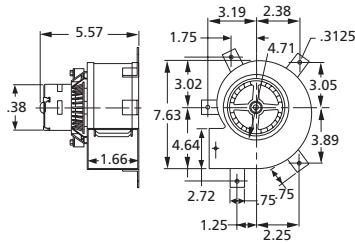
**A064**



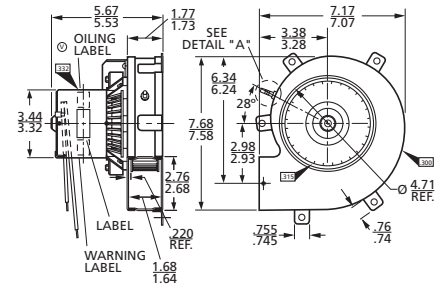
**A079**



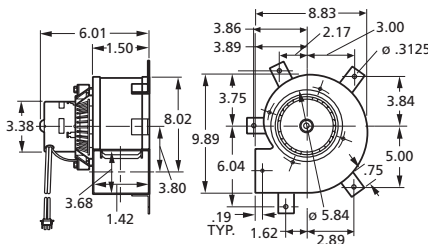
**A080**



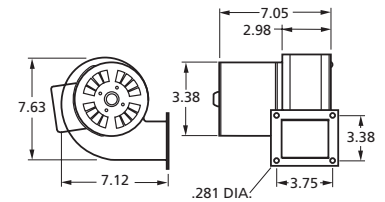
**A090**



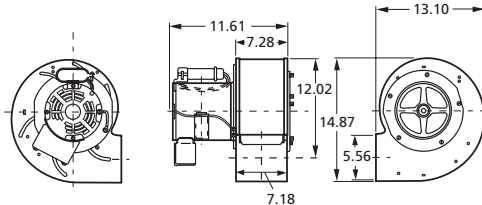
**A118**



**B24220**



**A1200**



MODEL#	CFM AT STATIC PRESSURE SHOWN STATIC PRESSURE (INCHES OF WATER)										NAME- PLATE CFM	VOLTS	FREQ.	NO. OF SPEEDS	RPM@ FREE AIR	AMPS@ FREE AIR
	0.1	0.2	0.3	0.4	0.5	0.6	0.7	0.8	0.9	1						
A064	—	66	65	64	58	48	25	—	—	—	—	—	—	64	115	60
A079	85	81	77	73	65	51	22	—	—	—	—	—	—	89	115	60
A080	78	75	72	68	63	60	47	—	—	—	—	—	—	80	115	60
A090	86	84	78	73	66	57	24	—	—	—	—	—	—	90	115	60
A118	112	110	106	102	97	90	83	73	60	39	22	18	10	118	115	60
B24220	—	140	130	120	110	45	22	—	—	—	—	—	—	135	115	50/60
A1200	1260/1065	1240/1060	1200/1050	1150/1000	1075/950	1000/900	925/800	800/675	200/200	—	—	—	—	1200	115/230	60



The largest selection of motors, components and accessories for the HVAC/R Industry