

Browning® Bushings....

Browning Split Taper Bushing
Only bushing in the industry with a lifetime guarantee

- Solid flange to maintain concentric bores
- 3/4" taper per foot – self locking
- Double split barrel for positive clamping
- External key on most sizes for positive drive and greater torque carrying capabilities
- Available in inch, metric and spline bores. Bore range from 3/8" to 10"

Split Taper, Q-D... The Broadest Range of Bushing Systems From a Single Source

Along with the proven Browning Split Taper Bushing, Q-D bushing systems are available. No other manufacturer gives you this broad selection! Depending on your drive requirements, select from any of these bushing systems, to obtain the most effective combination of components, or choose your own preferred bushing type.

Browning Split Taper Bushings

- Lifetime guarantee
- Keyed to both shaft and hub. External key provides positive drive with no torque on the cap screws.
- Highest torque carrying capacity.
- Double split barrel assure true concentricity - grips the shaft with positive clamp fit.
- Standard Sizes - 3/8" - 10" bore sizes.
- Metric Sizes - 10mm - 95mm bore sizes.
- Spline Bore - 5/8" - 1 3/8", 6B and 10B, 10 and 21 involute.



Split taper bushing



Q-D bushing

Browning multiple groove sheave with split taper bushing



Browning Q-D Bushings

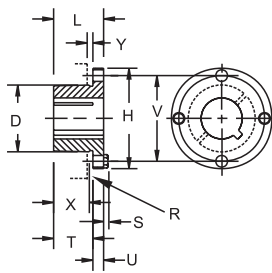
- Standard Sizes - 1/2" - 7" bore range.
- Metric Sizes - 24mm - 100mm bore range.
- For use with Browning sheaves, sprockets and pulleys; fully interchangeable with competitive Q-D bushings.



Type 1 Bushings

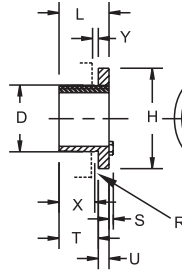


Type 2 Bushings

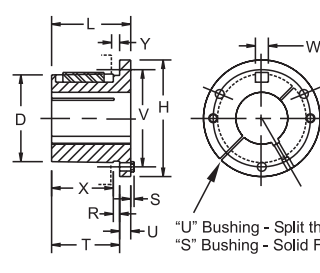


"G" & "H" BUSHINGS

TYPE 1

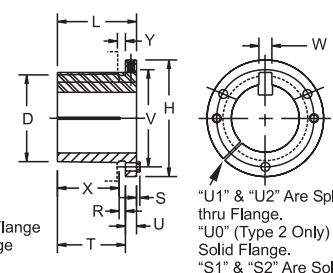


TYPE 2



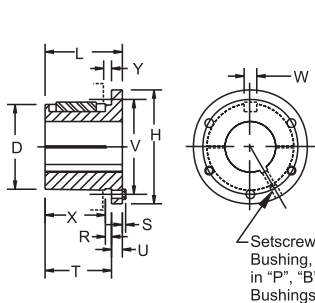
"S" & "U" BUSHINGS

TYPE 1



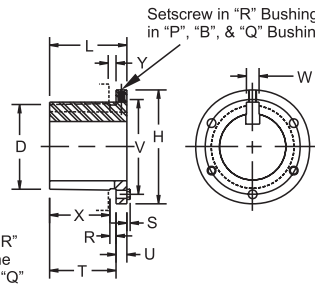
TYPE 2

"U1" & "U2" Are Split thru Flange.
"U0" (Type 2 Only) is Solid Flange.
"S1" & "S2" Are Solid Flange.

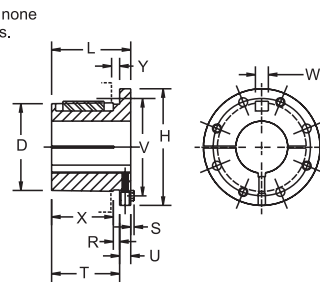


"P", "B", "Q", & "R" BUSHINGS

TYPE 1

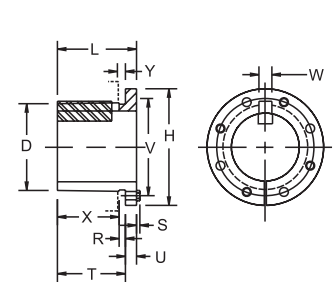


TYPE 2



"W" & "Y" BUSHINGS

TYPE 1



TYPE 2

Setscrew in "R" Bushing, none in "P", "B", & "Q" Bushings.

Setscrew in "R" Bushing, none in "P", "B", & "Q" Bushings.

Table No. 1

Bushing Specifications

Part No.	Dimensions												Bore Range		Cap Screws		Av. Wt. Lbs.	Wrench Torque In-Lbs.
	L	U	T	D		H	V	W	X	Y	R	S	Type 1	Type 2	No.	Size		
				Large End	Small End													
G	1"	1/4"	3/4"	1.172"	1.133"	2"	19/16"	-	5/8"	3/16"	1/8"	3/16"	3/8" - 15/16"	1"	2	1/4 x 5/8"	.5	95
H	1 1/4	1/4	1	1.625	1.570	2 1/2	2	-	7/8	3/16	1/8	3/16	3/8 - 1 3/8	1 7/16 - 1 1/2	2	1/4 x 3/4	.8	95
P1	1 15/16	13/32	1 17/32	1.9375	1.08555	3	27/16	3/8	15/16	7/32	7/32	1/4	1/2 - 1 7/16	1 1/2 - 1 3/4	3	5/16 x 1	1.3	192
P2	2 15/16	13/32	2 17/32	1.9375	1.7930	3	27/16	3/8	2 5/16	7/32	7/32	1/4	3/4 - 1 7/16	1 1/2 - 1 3/4	3	5/16 x 1	1.5	192
P3	4 7/16	13/32	4 1/32	1.9375	1.6993	3	27/16	3/8	3 13/16	7/32	7/32	1/4	1 1/8 - 1 3/8	1 5/8	3	5/16 x 1	2	192
B	1 15/16	1/2	17/16	2.625	2.5567	3 11/16	3 1/8	1/2	13/16	7/32	1/4	1/4	1/2 - 1 15/16	2 - 2 7/16	3	5/16 x 1 1/4	1.8	192
Q1	2 1/2	17/32	13 1/32	2.875	2.7657	4 1/8	33/8	1/2	13/4	7/32	7/32	9/32	3/4 - 2 1/16	2 1/8 - 2 11/16	3	3/8 x 1 1/4	3.5	348
Q2	3 1/2	17/32	2 31/32	2.875	2.7032	4 1/8	33/8	1/2	23/4	7/32	7/32	9/32	1 - 2 1/16	2 1/8 - 2 5/8	3	3/8 x 1 1/4	4.5	348
Q3	5	17/32	4 15/32	2.875	2.6094	4 1/8	33/8	1/2	4 1/4	7/32	7/32	9/32	1 3/8 - 1/16	2 1/8 - 2 1/2	3	3/8 x 1 1/4	5.5	348
R1	2 7/8	5/8	2 1/4	2.875	3.8750	53/8	45/8	3/4	2	1/4	1/4	9/32	1 1/8 - 2 13/16	2 7/8 - 3 3/4	3	3/8 x 1 3/4	7.5	348
R2	4 7/8	5/8	4 1/4	4.000	3.7500	53/8	45/8	3/4	4	1/4	1/4	9/32	1 3/8 - 2 13/16	2 7/8 - 3 5/8	3	3/8 x 1 3/4	11	348
S1	4 3/8	3/4	3 5/8	4.000	4.4180	63/8	53/8	3/4	3 5/16	5/16	5/16	3/8	1 11/16 - 3 3/16	3 1/4 - 4 1/4	3	1/2 x 2 1/4	13.5	840
S2	6 3/4	3/4	6	4.625	4.2696	63/8	53/8	3/4	5 11/16	5/16	5/16	3/8	1 7/16 - 3 3/16	3 1/4 - 4 3/16	3	1/2 x 2 1/4	19	840
U0	5 1/4	11/16	4 3/16	4.625	5.7656	83/8	7	1 1/4	3 3/4	7/16	7/16	15/32	2 3/8 - 3 1/16	-	3	5/8 x 2 3/4	30	1680
U0	4 15/16	3/4	4 3/16	6.000	5.7656	83/8	7	1 1/4	3 3/4	7/16	7/16	15/32	3 1/4 - 4 1/4	4 3/8 - 5 1/2	3	5/8 x 2 3/4	27	1680
U1	7 1/8	11/16	6 1/16	6.000	5.6485	83/8	7	1 1/4	5 5/8	7/16	7/16	15/32	2 3/8 - 4 1/4	4 3/8 - 5 1/2	3	5/8 x 2 3/4	40	1680
U2	10 1/8	11/16	9 1/16	6.000	5.4610	83/8	7	1 1/4	8 5/8	7/16	7/16	15/32	2 7/16 - 4 1/4	4 3/8 - 5	3	5/8 x 2 3/4	50	1680
W1	8 1/4	17/16	6 13/16	6.000	8.1016	121/2	10	1 1/4	6 3/8	7/16	7/16	9/16	3 3/8 - 6 3/16	6 1/4 - 7 7/16	4	3/4 x 3	104	3000
W2	11 1/4	17/16	9 13/16	8.500	7.9141	121/2	10	1 1/4	9 3/8	7/16	7/16	9/16	3 3/8 - 6 3/16	6 1/4 - 7 7/16	4	3/4 x 3	133	3000
Y0*	11 1/8	2	9 1/8	8.500	11.4688	161/2	141/2	2	8 1/2	5/8	5/8	5/8	6 - 7 15/16	8 - 0	4	1 x 5	270	7200

R1 - 1 1/8, R1 1 3/16, R2 1 3/8, S1 1 11/16, S1 1 3/4 and S2 1 7/8" to 2 1/8" Bushings are steel. U0 and U1 2 3/8" to 3 3/16" and U2 2 7/16" to 3 3/16" are cast iron. "W" and "Y" Bushings are cast iron. All other Bushings on this page are either sintered steel, malleable iron or ductile iron. Contact Factory for clarification. *Y Bushings are made-to-order.

Note: Taper on all Browning Split Bushings is 3/4 " per foot on diameter.

G 3/8 - W2 7 7/16

Split Taper Bushings

Complete Round Shaft Coverage
Plus Millimeter and Spline Bores

Table No. 1 Stock Inch Bore Bushings

Stock Bore	Keyseat	G	H	P1	P2	P3	B	Q1	Q2	Q3	R1	R2	S1
3/8"	None	X	X	-	-	-	-	-	-	-	-	-	-
7/16	None	X	X	-	-	-	-	-	-	-	-	-	-
1/2	1/8 x 1/16	X	X	X	-	-	X	-	-	-	-	-	-
9/16	1/8 x 1/16	X	X	X	-	-	X	-	-	-	-	-	-
19/32	3/16 x 3/32	-	X	-	-	-	-	-	-	-	-	-	-
5/8	3/16 x 3/32	X	X	X	-	-	X	-	-	-	-	-	-
21/32	3/16 x 3/32	-	X	X	-	-	-	-	-	-	-	-	-
11/16	3/16 x 3/32	X	X	X	-	-	X	-	-	-	-	-	-
3/4	3/16 x 3/32	X	X	X	X	-	X	X	-	-	-	-	-
25/32	3/16 x 3/32	-	X	X	-	-	-	-	-	-	-	-	-
13/16	3/16 x 3/32	X	X	X	X	-	X	X	-	-	-	-	-
7/8	3/16 x 3/32	X	X	X	X	-	X	X	-	-	-	-	-
15/16	1/4 x 1/8	X*	X	X	X	-	X	X	-	-	-	-	-
31/32	1/4 x 1/8	-	X	X	-	-	-	-	-	-	-	-	-
1	1/4 x 1/8	X*	X	X	X	-	X	X	X	-	-	-	-
1 1/16	1/4 x 1/8	-	X	X	X	-	X	X	X	-	-	-	-
1 1/8	1/4 x 1/8	-	X	X	X	X	X	X	X	-	X	-	-
1 3/16	1/4 x 1/8	-	X	X	X	-	X	X	X	-	X	-	-
1 1/4	1/4 x 1/8	-	X*	X	X	-	X	X	X	-	X	-	-
1 5/16	5/16 x 5/32	-	X*	X	X	-	X	X	X	-	X	-	-
1 3/8▲	5/16 x 5/32	-	X*	X	X	X*	X	X	X	X	X	X	-
1 3/8▲	3/8 x 3/16	-	X*	X	X	-	X	X	X	-	X	-	-
1 7/16	3/8 x 3/16	-	X*	X	X*	-	X	X	X	X	X	X	-
1 1/2	3/8 x 3/16	-	X*	X	X	-	X	X	X	X	X	X	-
1 9/16	3/8 x 3/16	-	-	X	X	-	X	X	X	X	X	X	-
1 5/8	3/8 x 3/16	-	-	X	X	X	X	X	X	X	X	X	-
1 11/16	3/8 x 3/16	-	-	X	X	-	X	X	X	X	X	X	X
1 3/4	3/8 x 3/16	-	-	X	X	-	X	X	X	X	X	X	X

Table No. 1 (Cont'd.)

Stock Bore	Keyseat	W1	W
5 5/8	1 1/2 x 3/4	X	X
5 3/4	1 1/2 x 3/4	X	X
5 7/8	1 1/2 x 3/4	X	X
5 15/16	1 1/2 x 3/4	X	X
6	1 1/2 x 3/4	X	X
6 1/8	1 1/2 x 3/4	X	X
6 3/16	1 1/2 x 3/4	X	X
6 1/4	1 1/2 x 3/4	X	X
6 3/8	1 1/2 x 3/4	X	X
6 7/16	1 1/2 x 3/4	X	X
6 1/2	1 1/2 x 3/4	X	X
6 5/8	1 3/4 x 3/4	X	X
6 3/4	1 3/4 x 3/4	X	X
6 7/8	1 3/4 x 3/4	X	X
6 15/16	1 3/4 x 3/4	X	X
7	1 3/4 x 3/4	X	X
7 1/8	1 3/4 x 3/4	X	X
7 3/16	1 3/4 x 3/4	X	X
7 1/4	1 3/4 x 3/4	X	X
7 3/8	1 3/4 x 3/4	X	X
7 7/16	1 3/4 x 3/4	X	X

Table No. 2 Stock Millimeter Bore Bushings

Stock Bore	Keyseat (Millimeters)	G	H	P1	B	Q1	R1	R2
10 mm.	None	x	x	-	-	-	-	-
11 mm.	None	x	x	-	-	-	-	-
12 mm.	None	x	x	-	-	-	-	-
14 mm.	5 x 25	x	x	x	-	-	-	-
15 mm.	5 x 25	-	-	x	x	-	-	-
16 mm.	5 x 25	x	x	x	x	-	-	-
18 mm.	6 x 3	x	x	x	x	-	-	-
19 mm.	6 x 3	x	x	x	x	x	-	-
20 mm.	6 x 3	x	x	x	x	x	-	-
22 mm.	6 x 3	x	x	x	x	x	-	-
24 mm.	8 x 3.5	x	x	x	x	x	-	-
25 mm.	8 x 3.5	x	x	x	x	x	-	-
28 mm.	8 x 3.5	-	x	x	x	x	x	-
30 mm.	8 x 3.5	-	x	x	x	x	x	-
32 mm.	10 x 4	-	x	x	x	x	x	-
35 mm.	10 x 4	-	x	x	x	x	x	x
36 mm.	10 x 4	-	x	x	x	x	x	x
38 mm.	10 x 4	-	x	x	x	x	x	x
39 mm.	12 x 4	-	-	x	x	-	x	x
40 mm.	12 x 4	-	-	x	x	x	x	x
42 mm.	12 x 4	-	-	x	x	x	x	x
45 mm.	14 x 4.5	-	-	-	x	x	x	x
48 mm.	14 x 4.5	-	-	-	x	x	x	x
50 mm.	14 x 4.5	-	-	-	x	x	x	x
55 mm.	16 x 5	-	-	-	x	x	x	x
60 mm.	18 x 5.5	-	-	-	x	x	x	x
65 mm.	18 x 5.5	-	-	-	-	x	x	x
70 mm.	20 x 6	-	-	-	-	-	x	x
75 mm.	20 x 6	-	-	-	-	-	x	x
80 mm.	22 x 7	-	-	-	-	-	-	x
85 mm.	22 x 7	-	-	-	-	-	-	x
90 mm.	25 x 7	-	-	-	-	-	-	x
95 mm.	25 x 7	-	-	-	-	-	-	x

Table No. 3 Stock Spline Bore Bushings

Spline	H	P1	Q1	Q2
.978 - 10 Inv.	x	x	-	-
1 1/8 - 6B	x	x	x	-
1 1/4 - 10B	-	x	-	-
1 3/8 - 6B	x	x	x	x
1 3/8 - 10B	-	x	x	-
1 3/8 - 21Inv.	x	x	x	-

	B	Q1	Q2	Q3	R1	R2	S1	S2	U0	U1	U2
1 13/16	1/2 x 1/4	X	X	X	X	X	X	-	-	-	-
1 7/8	1/2 x 1/4	X	X	X	X	X	X	-	-	-	-
1 15/16	1/2 x 1/4	X	X	X	X	X	X	-	-	-	-
2	1/2 x 1/4	X	X	X	X	X	X	-	-	-	-
2 1/16	1/2 x 1/4	X	X	X	X	X	X	-	-	-	-
2 1/8	1/2 x 1/4	X	X	X	X	X	X	-	-	-	-
2 3/16	1/2 x 1/4	X	X	X	X	X	X	-	-	-	-
2 1/4	1/2 x 1/4	X	X	X	X	X	X	-	-	-	-
2 5/16	5/8 x 5/16	X	X	X	X	X	X	-	-	-	-
2 3/8	5/8 x 5/16	X	X	X	X	X	X	X	X	-	-
2 7/16	5/8 x 5/16	X	X	X	X	X	X	X	X	X	-
2 1/2	5/8 x 5/16	-	X	X	X	X	X	X	X	X	-
2 9/16	5/8 x 5/16	-	X	X	X	X	X	X	X	X	-
2 5/8	5/8 x 5/16	-	X	X	-	X	X	X	X	X	-
2 11/16	5/8 x 5/16	-	X	-	-	X	X	X	X	X	-
2 3/4	5/8 x 5/16	-	-	-	-	X	X	X	X	X	-
2 13/16	3/4 x 3/8	-	-	-	-	X	X	-	-	-	-
2 7/8	3/4 x 3/8	-	-	-	-	X	X	X	X	X	-
2 15/16	3/4 x 3/8	-	-	-	-	X	X	X	X	X	-
3	3/4 x 3/8	-	-	-	-	X	X	X	X	X	-
3 1/8	3/4 x 3/8	-	-	-	-	X	X	X	X	X	-
3 3/16	3/4 x 3/8	-	-	-	-	X	X	X	X	X	-
3 1/4	3/4 x 3/8	-	-	-	-	X	X	X	X	X	-

▲ 1 3/8 Bore Bushings with 5/16 x 5/32" keyway will be shipped unless the 3/8 x 3/16 keyway is specified on the order.
* These sizes have a shallow keyseat. Special keys are furnished to fit standard depth keyseats in shafts.

Q-D Bushings



Table No. 1 Bushing Specifications

Bushing	Bore Range	Dimensions							Capscrews			Torque Capacity In.-Lbs.	Wrench Torque Ft.-Lbs.	Average Weight Lbs.
		D	L	A	B	C	E	F	No.	Size	Bolt Circle			
JA	1/2" - 1 1/4"	2"	1"	1/2"	1.375"	3/16"	11/16"	5/16"	3	10 - 24 x 1	1 21/32"	1000	6	.8
SH	1/2 - 1 5/8	2 11/16	15/16	21/32	1.871	7/32	7/8	7/16	3	1/4 - 20 x 1 3/8	2 1/4	3500	9	1.0
SDS	1/2 - 2	3 1/8	15/16	21/32	2.1875	7/32	7/8	7/16	3	1/4 - 20 x 1 3/8	2 11/16	5000	9	1.2
SD	1/2 - 2	3 1/8	1 13/16	1 5/32	2.1875	7/32	1 3/8	7/16	3	1/4 - 20 x 1 7/8	2 11/16	5000	9	1.5
SK	1/2 - 2 5/8	3 7/8	1 15/16	1 5/32	2.8125	7/32	1 3/8	9/16	3	5/16 - 18 x 2	3 5/16	7000	15	2.0
SF	1/2 - 2 15/16	4 5/8	2 1/16	1 7/32	3.125	7/32	1 7/16	5/8	3	3/8 - 16 x 2	3 7/8	11000	30	3.5
E	7/8 - 3 1/2	6	2 3/4	1 19/32	3.834	9/32	1 7/8	7/8	3	1/2 - 13 x 2 3/4	5	20000	60	9.0
F	1 - 4	6 5/8	3 3/4	2 13/32	4.4375	11/32	2 3/4	1	3	9/16 - 12 x 3 5/8	5 5/8	30000	75	14
J	1 1/2 - 4 1/2	7 1/4	4 5/8	3 3/16	5.1484	5/16	3 1/2	1 1/8	3	5/8 - 11 x 4 1/2	6 1/4	45000	135	22
M	2 - 5 1/2	9	6 3/4	5 5/32	6.494	11/32	5 1/2	1 1/4	4	3/4 - 10 x 6 3/4	7 7/8	85000	225	51
N	2 7/16 - 5 7/8	10	8 1/8	6 1/16	6.992	9/16	6 5/8	1 1/2	4	7/8 - 9 x 8	8 1/2	150000	300	66
P	2 15/16 - 7	1 13/4	9 3/8	7	8.242	5/8	7 5/8	1 3/4	4	1 - 8 x 9 1/2	10	250000	450	122

Note: All Bushings shown except JA have set screw over keyway.

Mount Either Way

Bushing Flange Toward Machine or Motor

1. Align tapped holes in bushing flange with drilled holes in sheave hub.
2. Insert capscrews through drilled holes in sheave hub and thread loosely into tapped holes in bushing flange.
3. Position assembly on shaft and tighten capscrews progressively and uniformly.

To Remove

1. Remove capscrews and thread into tapped holes in sheave hub. Tighten progressively until bushing is free from sheave taper.
2. Remove assembly from shaft.

Bushing Flange Away From Machine or Motor

1. Align drilled holes in bushing flange with tapped holes in sheave hub.
2. Insert cap screws through drilled holes in bushing flange and thread loosely into tapped holes in sheave hub.
3. Position assembly on shaft and tighten capscrews progressively and uniformly.

To Remove

1. Remove capscrews and thread into tapped holes in bushing flange. Tighten progressively until bushing is free from sheave taper.
2. Remove assembly from shaft.

Capscrews are always accessible from the outside.

Q-D Bushings

Table No. 1 Stock Inch Bore Bushings

Stock Bores	Keyseat	JA	SH	SDS	SD	SK	SF	E	F	J
1/2	1/8 x 1/16	X	X	X	X	X	X	—	—	—
9/16	1/8 x 1/16	X	X	X	X	X	X	—	—	—
5/8	3/16x 3/32	X	X	X	X	X	X	—	—	—
1/16	3/16x 3/32	X	X	X	X	X	X	—	—	—
3/4	3/16x 3/32	X	X	X	X	X	X	—	—	—
13/16	3/16x 3/32	X	X	X	X	X	X	—	—	—
7/8	3/16x 3/32	X	X	X	X	X	X	—	—	—
15/16	1/4x 1/8	X	X	X	X	X	X	—	—	—
1	1/4x 1/8	X	X	X	X	X	X	—	—	—
1 1/16	1/4x 1/8	S	X	X	X	X	X	X	—	—
1 1/8	1/4x 1/8	S	X	X	X	X	X	X	—	—
1 3/16	1/4x 1/8	S	X	X	X	X	X	X	—	—
1 1/4	1/4x 1/8	—	X	X	X	X	X	X	—	—
1 5/16	5/16x 5/32	—	X	X	X	X	X	X	—	—
1 15/16*	3/8x 3/16	—	X	X	X	X	X	X	—	—
1 3/8	5/16x 5/32	—	X	X	X	X	X	X	—	—
1 3/8*	3/8x 3/16	—	X	X	X	X	X	X	—	—
1 7/16	3/8x 3/16	—	S	X	X	X	X	X	—	—
1 1/2	3/8x 3/16	—	S	X	X	X	X	X	X	—
1 9/16	3/8x 3/16	—	S	X	X	X	X	X	X	—
1 5/8	3/8x 3/16	—	S	X	X	X	X	X	X	—
1 11/16	3/8x 3/16	—	S	X	X	X	X	X	X	—
		SDS	SD	SK	SF	E	F	J	M	N
1 3/4	3/8 x 3/16	S	S	X	X	X	X	X	—	—
1 13/16	1/2 x 1/4	S	S	X	X	X	X	X	—	—
1 7/8	1/2 x 1/4	S	S	X	X	X	X	X	—	—
1 15/16	1/2 x 1/4	S	S	X	X	X	X	X	—	—
2	1/2 x 1/4	N	N	X	X	X	X	X	—	—
2 1/16	1/2 x 1/4	—	—	X	X	X	X	X	—	—
2 1/8	1/2 x 1/4	—	—	X	X	X	X	X	—	—
2 3/16	1/2 x 1/4	—	—	S	X	X	X	X	—	—
2 1/4	1/2 x 1/4	—	—	S	X	X	X	X	—	—
2 5/16	5/8 x 5/16	—	—	S	S	X	X	X	—	—
2 3/8	5/8 x 5/16	—	—	S	S	X	X	X	—	—
2 7/16	5/8 x 5/16	—	—	S	S	X	X	X	X	—
2 1/2	5/8 x 5/16	—	—	S	S	X	X	X	X	—
2 9/16	5/8 x 5/16	—	—	N	S	X	X	X	X	—
2 5/8	5/8 x 5/16	—	—	N	S	X	X	X	X	—
		SF	E	F	J	M	N	P		
2 11/16	5/8 x 5/16	S	X	X	X	X	X	—	—	—
2 3/4	5/8 x 5/16	S	X	X	X	X	X	—	—	—
2 13/16	3/4 x 3/8	S	X	X	X	X	X	—	—	—
2 7/8	3/4 x 3/8	S	X	X	X	X	X	—	—	—
2 15/16	3/4 x 3/8	S	S	X	X	X	X	X	—	—
3	3/4 x 3/8	—	S	X	X	X	X	X	—	—
3 1/16	3/4 x 3/8	—	S	X	X	X	X	X	—	—
3 1/8	3/4 x 3/8	—	S	X	X	X	X	X	—	—
3 3/16	3/4 x 3/8	—	S	X	X	X	X	X	—	—
3 1/4	3/4 x 3/8	—	S	X	X	X	X	X	—	—
3 5/16	7/8 x 7/16	—	S	S	X	X	X	X	—	—
3 3/8	7/8 x 7/16	—	S	S	X	X	X	X	—	—
3 7/16	7/8 x 7/16	—	S	S	X	X	X	X	—	—
3 1/2	7/8 x 7/16	—	S	S	X	X	X	X	—	—
3 9/16	7/8 x 7/16	—	—	S	X	X	X	X	—	—
3 5/8	7/8 x 7/16	—	—	S	X	X	X	X	—	—
3 11/16	7/8 x 7/16	—	—	S	X	X	X	X	—	—
3 3/4	7/8 x 7/16	—	—	S	X	X	X	X	—	—
3 13/16	7/8 x 7/16	—	—	S	X	X	X	X	—	—
3 7/8	1 x 1/2	—	—	S	S	X	X	X	—	—
3 15/16	1 x 1/2	—	—	S	S	X	X	X	—	—
4	1 x 1/2	—	—	N	S	X	X	X	—	—
		J	M	N	P					
4 1/16	1 x 1/2	S	X	X	X	—	—	—	—	—
4 1/8	1 x 1/2	S	X	X	X	—	—	—	—	—
4 3/16	1 x 1/2	S	X	X	X	—	—	—	—	—
4 1/4	1 x 1/2	S	X	X	X	—	—	—	—	—
4 5/16	1 x 1/2	S	X	X	X	—	—	—	—	—
4 3/8	1 x 1/2	S	X	X	X	—	—	—	—	—
4 7/16	1 x 1/2	S	X	X	X	—	—	—	—	—
4 1/2	1 x 1/2	S	X	X	X	—	—	—	—	—
4 9/16	1 x 1/2	S	X	X	X	—	—	—	—	—
4 5/8	1 1/4 x 5/8	—	X	X	X	—	—	—	—	—
4 11/16	1 1/4 x 5/8	—	X	X	X	—	—	—	—	—
4 3/4	1 1/4 x 5/8	—	S	X	X	—	—	—	—	—
4 13/16	1 1/4 x 5/8	—	S	X	X	—	—	—	—	—
4 7/8	1 1/4 x 5/8	—	S	X	X	—	—	—	—	—
4 15/16	1 1/4 x 5/8	—	S	X	X	—	—	—	—	—
5	1 1/4 x 5/8	—	S	X	X	—	—	—	—	—
5 1/16	1 1/4 x 5/8	—	S	X	X	—	—	—	—	—
5 1/8	1 1/4 x 5/8	—	S	S	X	—	—	—	—	—
5 3/16	1 1/4 x 5/8	—	S	S	X	—	—	—	—	—
5 1/4	1 1/4 x 5/8	—	S	S	X	—	—	—	—	—
5 5/16	1 1/4 x 5/8	—	S	S	X	—	—	—	—	—
5 3/8	1 1/4 x 5/8	—	S	S	X	—	—	—	—	—
5 7/16	1 1/4 x 5/8	—	S	S	X	—	—	—	—	—
5 1/2	1 1/4 x 5/8	—	S	S	X	—	—	—	—	—

Table No. 1 (Cont'd.)

Stock Bores	Keyseat	N	P
5 9/16	1 1/2 x 3/4	S	X
5 5/8	1 1/2 x 3/4	S	X
5 11/16	1 1/2 x 3/4	S	X
5 3/4	1 1/2 x 3/4	S	X
5 13/16	1 1/2 x 3/4	S	X
5 7/8	1 1/2 x 3/4	S	S
5 15/16	1 1/2 x 3/4	—	S
6	1 1/2 x 3/4	—	S
6 1/16	1 1/2 x 3/4	—	S
6 1/8	1 1/2 x 3/4	—	S
6 3/16	1 1/2 x 3/4	—	S
6 1/4	1 1/2 x 3/4	—	S
6 5/16	1 1/2 x 3/4	—	S
6 3/8	1 1/2 x 3/4	—	S
6 7/16	1 1/2 x 3/4	—	S
6 1/2	1 1/2 x 3/4	—	S
6 9/16	1 3/4 x 3/4	—	S
6 5/8	1 3/4 x 3/4	—	S
6 11/16	1 3/4 x 3/4	—	S
6 3/4	1 3/4 x 3/4	—	S
6 13/16	1 3/4 x 3/4	—	S
6 7/8	1 3/4 x 3/4	—	S
6 15/16	1 3/4 x 3/4	—	S
7	1 3/4 x 3/4	—	S

Table No. 2 Stock Millimeter Bore Bushings

Stock Bores	Keyseat (Millimeters)	SH	SDS	SD	SK	SF	E	F	J
24	8 x 3.5	X	X	X	X	—	—	—	—
25	8 x 3.5	X	X	X	X	—	—	—	—
28	8 x 3.5	X	X	X	X	X	—	—	—
30	8 x 3.5	X	X	X	X	X	—	—	—
32	10 x 4	X	X	X	X	X	—	—	—
35	10 x 4	X	X	X	X	X	—	—	—
38	10 x 4	—	X	X	X	X	X	—	—
40	12 x 4	—	X	X	X	X	X	—	—
42	12 x 4	—	X	X	X	X	X	—	—
45	14 x 4.5	—	—	—	—	X	X	X	—
48	14 x 4.5	—	X	—	X	X	X	X	—
50	14 x 4.5	—	—	—	X	X	X	X	X
55	16 x 5	—	—	—	X	X	X	X	X
60	18 x 5.5	—	—	—	—	X	X	X	X
65	18 x 5.5	—	—	—	—	—	X	X	X
70	20 x 6	—	—	—	—	—	X	X	X
75	20 x 6	—	—	—	—	—	X	X	X
80	22 x 7	—	—	—	—	—	—	X	X
85	22 x 7	—	—	—	—	—	—	X	X
90	25 x 7	—	—	—	—	—	—	X	X
95	25 x 7	—	—	—	—	—	—	—	X
100	28 x 8	—	—	—	—	—	—	—	X

* Bushings with 5/16 x 5/32" keyway will be shipped unless the 3/8 x 3/16 keyway is specified on the order.
 X = Stock bore with standard keyway.
 N = Stock bore with no keyway.
 S = Stock bore with shallow keyway; rectangular key is furnished to fit standard keyseat.

FHP and FHPK Bushings Increase Applications of Finished Bore Items!

Table No. 1 Bushing Specifications

Bushing Part No.	O.D.	I.D.	Length	Key	Wt. per Carton
FHP23K	5/8"	1/2"	1 1/8"	3/16" x 5/32" - 1/8" x 1/16"	.3
FHP1K	3/4	1/2	1 1/8	3/16 x 7/32 - 1/8 x 1/16	.5
FHP8K	3/4	9/16	1 1/8	3/16 x 5/32 - 1/8 x 1/16	.4
FHP2K	3/4	5/8	1 1/8	3/16 x 1/4	.3
FHP3K	1	5/8	1 1/8	1/4 x 5/16 - 3/16 x 3/32	.8
FHP9K	1	11/16	1 1/8	1/4 x 9/32 - 3/16 x 3/32	.7
FHP4K	1	3/4	1 1/8	1/4 x 1/4 - 3/16 x 3/32	.6
FHP10K	1	13/16	1 1/8	1/4 x 7/32 - 3/16 x 3/32	.5
FHP5K	1	7/8	1 1/8	1/4 x 5/32 - 3/16 x 3/32	.4
FHP20K	1	15/16	1 1/8	1/4 x 9/32	.3
FHP12K	1 7/16	1 1/16	1 3/8	3/8 x 11/32 - 1/4 x 1/8	1.6
FHP13K	1 7/16	1 1/8	1 3/8	3/8 x 5/16 - 1/4 x 1/8	1.4
FHP14K	1 7/16	1 3/16	1 3/8	3/8 x 9/32 - 1/4 x 1/8	1.2
FHP15K	1 7/16	1 1/4	1 3/8	3/8 x 1/4 - 1/4 x 1/8	1.0
FHP16K	1 7/16	1 5/16	1 3/8	3/8 x 7/32 - 5/16 x 5/32	.7
FHP17K	1 7/16	1 3/8	1 3/8	3/8 x 3/16 - 5/16 x 5/32	.5

"FHPK" Bushings are furnished complete with keys and are packaged 5 pieces per carton.

Note: These bushings are held in place by fit and friction only.

Table No. 2 FHP Bushings

Bushing Part No.	O.D.	I.D.	Length	Wt. per Carton
FHP18	1/2"	1/4"	1 1/8"	.3
FHP21	1/2	5/16	1 1/8	.2
FHP22	1/2	3/8	1 1/8	.2
FHP19	1/2	7/16	1 1/8	.1
FHP23	5/8	1/2	1 1/8	.3
FHP6	3/4	3/8	1 1/8	.5
FHP7	3/4	7/16	1 1/8	.5
FHP1	3/4	1/2	1 1/8	.4
FHP8	3/4	9/16	1 1/8	.3
FHP2	3/4	5/8	1 1/8	.2
FHP11	1	1/2	1 1/8	1.0
FHP3	1	5/8	1 1/8	.8
FHP9	1	11/16	1 1/8	.7
FHP4	1	3/4	1 1/8	.6
FHP10	1	13/16	1 1/8	.4
FHP5	1	7/8	1 1/8	.3
FHP20	1	15/16	1 1/8	.2
FHP12	1 7/16	1 1/16	1 3/8	1.4
FHP13	1 7/16	1 1/8	1 3/8	1.2
FHP14	1 7/16	1 3/16	1 3/8	1.0
FHP15	1 7/16	1 1/4	1 3/8	.8
FHP16	1 7/16	1 5/16	1 3/8	.5
FHP17	1 7/16	1 3/8	1 3/8	.3

"FHP" Bushings are furnished without keys or keyseats and should be used only on low torque applications. They are packaged 3 pieces per carton.

HG1 - HW1

Steel Hubs



Table No. 1 Steel Hubs for Split Taper Bushings

Part No.	For Bushing	Dimensions									Tapped Holes			Wt. Lbs.
		O.D.	A	B	C	K	V	W	X	a	d	No.	Size	
HG1	G	2"	.174"	1.168	1.875"	—	1 9/16"	—	5/8"	—	5/8"	2	1/4 - 20	.4
HH1	H	2 1/2	.174	1.621	2.375	—	2	—	7/8	—	7/8	2	1/4 - 20	.6
HCH1	H	2 1/2	.625	1.621	2.375	—	2	—	7/8	—	7/8	2	1/4 - 20	.7
HP1	P1	3	.292	1.9375	2.875	1 3/32	2 7/16	3/8"	1 5/16	60	5/8	3	5/16 - 18	1.4
HCP1	P1	3	1.000	1.9375	2.875	1 3/32	2 7/16	3/8	1 5/16	60	5/8	3	5/16 - 18	1.1
HP2	P2	3	1.100	1.9375	2.875	1 3/32	2 7/16	3/8	2 5/16	60	5/8	3	5/16 - 18	2.5
HB1	B	3 7/8	.292	2.623	3.750	1 7/16	3 1/8	1/2	1 5/16	60	13/16	3	5/16 - 18	2.3
HB2	B	4 1/2	.709	2.623	4.375	1 7/16	3 1/8	1/2	1 3/4	60	13/16	3	5/16 - 18	4.7
HQ1	Q1	4 1/2	.709	2.875	4.375	1 9/16	3 3/8	1/2	1 3/4	60	7/8	3	3/8 - 16	4.4
HQC1	Q1	4 1/2	1.250	2.875	4.375	1 9/16	3 3/8	1/2	1 3/4	60	7/8	3	3/8 - 16	4.4
HQ2	Q2	4 1/2	1.606	2.875	4.375	1 9/16	3 3/8	1/2	2 3/4	60	7/8	3	3/8 - 16	6.9
HR1	R1	5 3/4	.709	4.000	5.625	2 3/16	4 5/8	3/4	2	60	1 1/8	3	3/8 - 16	7.3
HR2	R2	5 3/4	1.606	4.000	5.625	2 3/16	4 5/8	3/4	4	60	1 1/8	3	3/8 - 16	15.4
HS1	S1	6 3/4	.946	4.625	6.500	2 9/16	5 3/8	3/4	3 5/16	60	1 5/8	3	1/2 - 13	17.3
HS2	S2	6 3/4	2.963	4.625	6.500	2 9/16	5 3/8	3/4	5 11/16	60	1 5/8	3	1/2 - 13	30.4
HU0	U0	8 1/2	2.000	6.000	8.250	3 1/4	7	1 1/4	3 3/4	60	2	3	5/8 - 11	32.0
HU1	U1	8 1/2	2.963	6.000	8.250	3 1/4	7	1 1/4	5 5/8	60	1 3/4	3	5/8 - 11	44.6
HU2	U2	8 1/2	6.016	6.000	8.250	3 1/4	7	1 1/4	8 5/8	60	1 3/4	3	5/8 - 11	69.0
HW1	W1	12 1/2	2.963	8.500	12.250	4 9/16	10	1 1/4	6 3/8	22 1/2	1 3/4	4	3/4 - 10	130.0



Table No. 2 Type "B" Steel Hubs

Part No.	Dimensions					Bore		Wt. Lbs.
	O.D.	A	C	P	X	Stock	Max.	
HB40	3"	.281"	2.875"	27/32"	1 1/8"	1/2"	1 7/8"	2.3
HB50	3 1/4	.344	3.125	1 1/32	1 3/8	5/8	2 1/4	3.0
HB60	4	.469	3.875	1 1/32	1 1/2	5/8	2 3/8	5.0
HB80	5	.563	4.875	1 1/2	2 1/16	3/4	3	11.1
HB100	5 1/4	.688	5.125	2 1/16	2 3/4	1	3 1/4	16.3

Note: "A" dimension is plate thickness of sprocket for chain indicated in part number. Other plates can be used by remachining "A" dimension.