

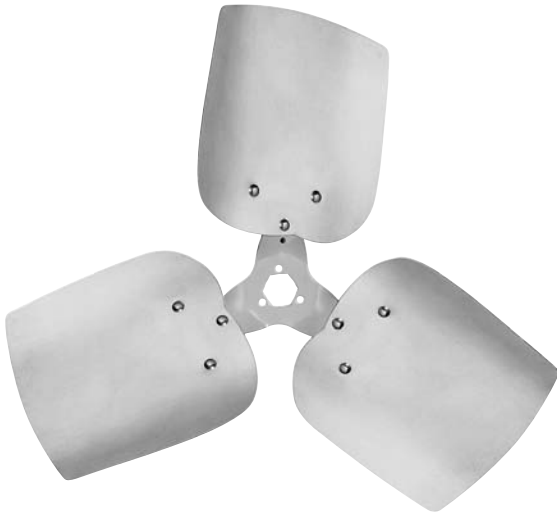
# 3-BLADE PROPELLERS

Heavy Duty Condenser Style



**Applications: Condensing Units, Building & Agricultural Ventilation Fans**

For performance information please refer to Appendix A



- **High strength aluminum blades with corrosion-resistant center spiders**

**Measure the correct pitch & rotation direction with a Lau Pitch Gauge**



**Part #05099801**

## CONDENSER STYLE, HEAVY DUTY PROPELLERS

Diameter (inches)	Part Number	Rotation	Pitch	Hub Location	Bore Size	Quantity Pack
10"	6129770001	CW	23°	Interchangeable		2
10"	6129760001	CCW	23°	Interchangeable		2
12"	60716101	CW	19°	Interchangeable		2
12"	60716201	CCW	19°	Interchangeable		2
12"	60716301	CW	23°	Interchangeable		2
12"	60716401	CCW	23°	Interchangeable		2
12"	6129790001	CW	27°	Interchangeable		2
12"	6129780001	CCW	27°	Interchangeable		2
14"	60998901	CW	19°	Intake	5/16"	2
14"	60716501	CW	23°	Interchangeable		2
14"	60716601	CCW	23°	Interchangeable		2
14"	60716701	CW	27°	Interchangeable		2
14"	60716801	CCW	27°	Interchangeable		2
16"	60716901	CW	19°	Interchangeable		2
16"	60717001	CCW	19°	Interchangeable		2
16"	60717101	CW	23°	Interchangeable		2
16"	60717201	CCW	23°	Interchangeable		2
16"	6129810001	CW	27°	Interchangeable		2
16"	6129800001	CCW	27°	Interchangeable		2
18"	6130590001	CW	19°	Discharge	1/2"	2

Specifications are subject to change without notice or obligation

### CONDENSER STYLE, HEAVY DUTY PROPELLERS, CON'T.

Diameter (inches)	Part Number	Rotation	Pitch	Hub Location	Bore Size	Quantity Pack
18"	6130600001	CCW	22°	Intake	1/2"	2
18"	60556001	CCW	23°	Interchangeable		2
18"	6130610001	CW	26°	Discharge	1/2"	2
18"	60556101	CW	27°	Interchangeable		2
18"	60556201	CCW	27°	Interchangeable		2
18"	60556301	CW	30°	Interchangeable		2
18"	60556401	CCW	30°	Interchangeable		2
18"	60556501	CW	33°	Interchangeable		2
18"	60556601	CCW	33°	Interchangeable		2
18"	6130620001	CCW	35°	Intake	1/2"	2
20"	60870301	CW	21°	Discharge	1/2"	2
20"	6129830001	CW	24°	Interchangeable		2
20"	6129820001	CCW	24°	Interchangeable		2
20"	60999001	CCW	25°	Intake	1/2"	2
20"	60556701	CW	27°	Interchangeable		2
20"	60556801	CCW	27°	Interchangeable		2
20"	60556901	CW	30°	Interchangeable		2
20"	60557001	CCW	30°	Interchangeable		2
20"	6130630001	CW	31°	Discharge	1/2"	2
20"	60557101	CW	33°	Interchangeable		2
20"	60557201	CCW	33°	Interchangeable		2
22"	6129570001	CW	20°	Intake	1/2"	2
22"	6130640001	CW	24°	Intake	1/2"	2
22"	60557301	CW	27°	Interchangeable		2
22"	60557401	CCW	27°	Interchangeable		2
22"	6130650001	CW	28°	Intake	1/2"	2
22"	6129850001	CW	30°	Interchangeable		2
22"	6129840001	CCW	30°	Interchangeable		2
22"	60557501	CW	33°	Interchangeable		2
22"	60557601	CCW	33°	Interchangeable		2
22"	6129870001	CW	35°	Interchangeable		2
22"	6129860001	CCW	35°	Interchangeable		2
24"	6131430001	CW	22°	Intake	1/2"	2
24"	60557701	CW	27°	Interchangeable		2

Specifications are subject to change without notice or obligation

# 3-BLADE PROPELLERS

Condenser Style, Heavy Duty



**Applications: Condensing Units, Building & Agricultural Ventilation Fans**

For performance information please refer to Appendix A

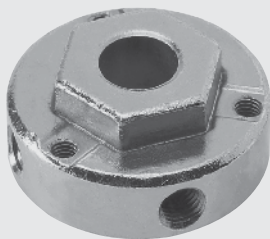
## CONDENSER STYLE, HEAVY DUTY PROPELLERS, CON'T.

Diameter (inches)	Part Number	Rotation	Pitch	Hub Location	Bore Size	Quantity Pack
24"	60557801	CCW	27°	Interchangeable		2
24"	6128230001	CW	30°	Intake	1/2"	2
24"	60557901	CW	33°	Interchangeable		2
24"	60558001	CCW	33°	Interchangeable		2
26"	61046601	CW	26°	Discharge	1/2"	1
26"	6129890001	CW	26°	Interchangeable		1
26"	6129880001	CCW	26°	Interchangeable		1
26"	6129910001	CW	33°	Interchangeable		1
26"	6129900001	CCW	33°	Interchangeable		1
26"	6130660001	CW	37°	Intake	1/2"	1
30"	6129920001	CCW	27°	Interchangeable		1
30"	6129930001	CW	27°	Interchangeable		1
30"	6129940001	CCW	33°	Interchangeable		1
30"	6129950001	CW	33°	Interchangeable		1

CW = Clockwise Rotation  
CCW = Counter-Clockwise Rotation

### INTERCHANGEABLE HUBS FOR 3-BLADE PROPELLERS

(Order Separately)



Part Number	Bore	Set Screw
60765801	1/4"	1
60765802	5/16"	1
60765803	3/8"	1
60765804	1/2"	2
60765805	5/8"	2
60765806	3/4"	2

### REMOVE FAN BLADES & BLOWER WHEELS EASILY WITH LAU'S HUB PULLERS

Use for Heavy Duty Applications



Part No.  
05214101

Use for General Duty Applications



Part No.  
05380401

See Page 32 for usage directions and to find replacement parts.

## DID YOU KNOW?

Numerous sizes and styles of all steel propellers through 96" are available on a special order basis.

Call for more information about the ...

**Number of Blades, Diameter, Bore Size, Motor Horsepower, Fan RPM and Application (where and how used).**

Specifications are subject to change without notice or obligation