



2721-068



HV Terminal: Zinc Plated Button
Hinge Location: Side Hinge



2721-069



Burner Manufacturer: John Wood
HV Terminal: Large Spring Contact
Hinge Location: Side Hinge



2721-252A



HV Terminal: Zinc Plated Button
Hinge Location: Side Hinge



2721-362A



HV Terminal: Compression Cone Spring



2721-368M



Burner Manufacturer: Metro
HV Terminal: Zinc Plated Button
Hinge Location: End Hinge



2721-409



Burner Manufacturer: ABC Crane
HV Terminal: Zinc Plated Button
Description: Special Side Bracket
Replaces: Webster: 313-25AB73, France: LKR-2



2721-411



Burner Manufacturer: ABC
HV Terminal: Zinc Plated Button
Hinge Location: End Hinge
Replaces: Webster: 313-25AB59, France: 5LAY-20



2721-448



Burner Manufacturer: NU Way (Large Plate)
HV Terminal: Buss Bar Contact
Hinge Location: End Hinge
Replaces: Webster: 313-24AB80



2721-452



Burner Manufacturer: ABC D&LC
HV Terminal: Buss Bar Contact
Hinge Location: Side Hinge
Replaces: Webster: 313-26AB65, France: 5LAY-11



2721-456



Burner Manufacturer: Aero
HV Terminal: Zinc Plated Button
Hinge Location: End Hinge
Replaces: Webster: 313-24ABAER, France: 5LAY-56



2721-457



Burner Manufacturer: Acme Weatherall
HV Terminal: Zinc Plated Button
Hinge Location: Side Hinge
Replaces: Webster: 3-25AB-AH, France: LKE



2721-558



Burner Manufacturer: Conroy
HV Terminal: Compression Cone Spring
Hinge Location: Side Hinge



2721-572



Burner Manufacturer: NU Way (Small Plate)
HV Terminal: Buss Bar Contact
Hinge Location: End Hinge
Replaces: Webster: 313-24AB82



2721-576



HV Terminal: Zinc Plated Button
Hinge Location: Special Side Hinge



2721-589



Burner Manufacturer: Grimsby
HV Terminal: Compression Cone Spring
Hinge Location: End Hinge



2721-605



Burner Manufacturer: Beckett S
HV Terminal: Large Spring Contact
Hinge Location: End Hinge
Replaces: Webster: 313-28AB92/313-28AB-BF,
France: 5LAY-05



2721-619



Burner Manufacturer: Wayne HI Speed M/MH
HV Terminal: Small Spring Contact
Hinge Location: End Hinge
Replaces: Webster: 313-28AB91, France: 5LAY-03



2721-620



Burner Manufacturer: Wayne E
HV Terminal: Zinc Plated Button
Hinge Location: Side Hinge
Replaces: Webster: 313-25AB78, France: 5LAY-30



2721-627



Burner Manufacturer: Brock
HV Terminal: Zinc Plated Button
Hinge Location: End Hinge
Replaces: France: 5LAY-57



2721-628G



Burner Manufacturer: Beckett A, AF, AFG
HV Terminal: Large Spring Contact
Hinge Location: End Hinge
Includes: Mounting Plate and Barrier Gaskets
 Mounting Plate Clips
Replaces: Webster: 3-28AB-BAF, France: 5LAY-04



2721-629



Burner Manufacturer: Carlin 17.5 FR, 200, 201, 500, 501 CRD
HV Terminal: Finger Contact
Hinge Location: Side Hinge
Replaces: Webster: 313-24AB-81, France: 5LAY-16



2721-630



Burner Manufacturer: Carlin 99, 100, 101, Card Miser
HV Terminal: Spring Clip Contact
Hinge Location: End Hinge
Includes: Mounting Plate Gasket
Replaces: Webster: 313-28AB85, France: 5LAY-15



2721-631A



Burner Manufacturer: ABC Sunray
HV Terminal: Small Spring Contact
Hinge Location: Side Hinge
Replaces: Webster: 313-25AB86, France: 5LAY-12



2721-637



Burner Manufacturer: Wayne
HV Terminal: Zinc Plated Button
Hinge Location: Side Hinge
Replaces: Webster: 313-25AB49, France: 5LAY-21

2721-647



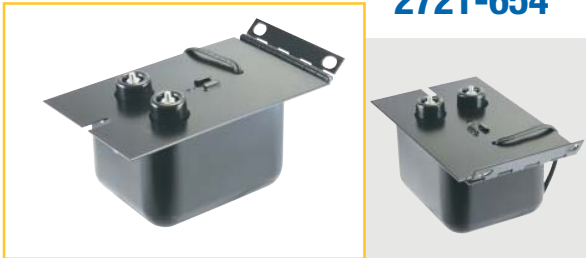
Burner Manufacturer: Wayne Blue Angle Eagle One
HV Terminal: Small Spring Contact
Description: Mounting Studs 8-32 x 3/8
Replaces: Webster: 313-28AB205W/313-28ABWHS,
 France: 5LAY-31

2721-653



Burner Manufacturer: Weil McLain QB180
HV Terminal: 1/4" Push On

2721-654



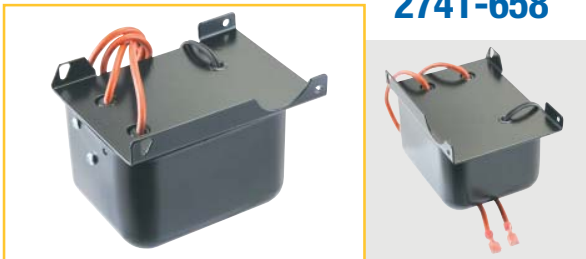
Burner Manufacturer: Clean Burn
HV Terminal: 8-32 Threaded Post
Hinge Location: End Hinge
Replaces: France: 5LAY-59

2721-668



Burner Manufacturer: Wayne
HV Terminal: Large Spring Contact
Description: Same As 647 But Less Bolts
Replaces: Webster: 313-28AB205W/313-28ABWHS,
 France: 5LAY-31

2741-658



Burner Manufacturer: Beckett AFII
HV Terminal: High Voltage Cables with 1/4" Push On
Description: Side Bracket Mounting
Replaces: Webster: 3-32AB-BAF

Model	Electrical Specifications
2721	120 Volt, 60 Hz, 10000 Volt Secondary, 23mA, Mid Point Ground, Small Can Series
2729	220 Volt, 50 Hz, 10000 Volt Secondary, 23mA, Mid Point Ground, Small Can Series
2730	120 Volt, 50 Hz, 10000 Volt Secondary, 23mA, Mid Point Ground, Small Can Series
2744	240 Volt, 60 Hz, 10000 Volt Secondary, 23mA, Mid Point Ground, Small Can Series