

## Description

The KMC MCP-8031 Pneumatic Actuators are designed to control small dampers such as air terminal units. The 8031 Series features a right angle bracket for mounting to the side of VAV terminals.

The actuator rotates in its' bracket so air connections can be made where needed. A clevis pin and slot provide direct connection between the VAV terminal's damper and the actuator shaft. The 8031's metal body design is ideal for ceiling plenum installations.

## Features

- ◆ The metal body is ideal for ceiling installations.
- ◆ Adjustable bracket allows a wide range of air connections
- ◆ Direct connection between VAV damper and actuator shaft

## Models

Use the list, below, to choose the MCP-8031 model which fits your application.

### BRONZE BUSHING WITH CLEVIS & COTTER PINS

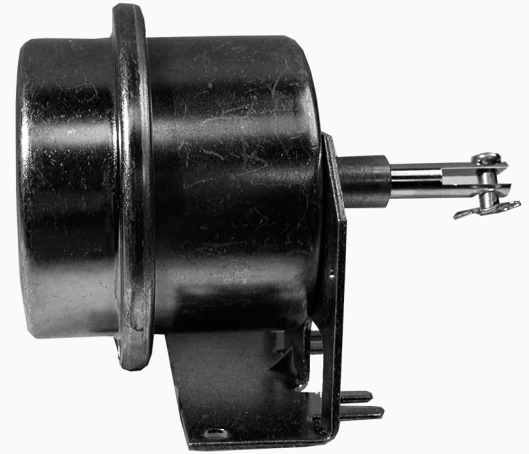
MCP-8031-2101	3 to 12 psi spring range
MCP-8031-3101	5 to 10 psi spring range
MCP-8031-5101	8 to 13 psi spring range
MCP-8031-8101	3 to 8 psi spring range

### BRONZE BUSHING WITHOUT CLEVIS & COTTER PINS

MCP-8031-2100	3 to 12 psi spring range
MCP-8031-3100	5 to 10 psi spring range
MCP-8031-5100	8 to 13 psi spring range
MCP-8031-8100	3 to 8 psi spring range

### DELTRIN BUSHING WITH CLEVIS & COTTER PINS & WITHOUT BRACKET

MCP-8031-3003	5 to 10 psi spring range
---------------	--------------------------



### DELTRIN BUSHING WITHOUT CLEVIS & COTTER PINS

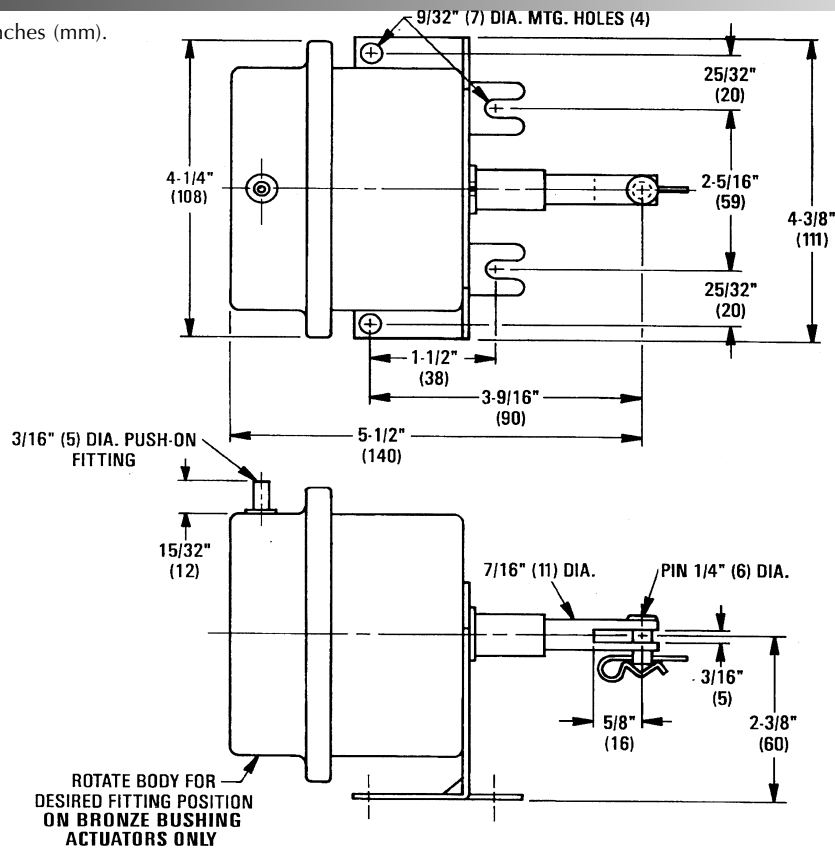
MCP-8031-2102	3 to 12 psi spring range
MCP-8031-3102	5 to 10 psi spring range
MCP-8031-5102	8 to 13 psi spring range
MCP-8031-8102	3 to 8 psi spring range

### BRONZE BUSHING WITHOUT CLEVIS & COTTER PINS OR BRACKET - SPECIAL 1" STROKE

MCP-8031-2099	3 to 8 psi spring range
---------------	-------------------------

## Details

All dimensions in inches (mm).



Damper Type	Up to 1000 FPM	1000 to 2500 FPM	2500 to 3000 FPM
Opposed blades without seals	3 in-lb / sq-ft	4.5 in-lb / sq-ft	6 in-lb / sq-ft
Parallel blades without seals	4 in-lb / sq-ft	6 in-lb / sq-ft	8 in-lb / sq-ft
Opposed blades with seals	5 in-lb / sq-ft	7.5 in-lb / sq-ft	10 in-lb / sq-ft
Parallel blades with seals	7 in-lb / sq-ft	10.5 in-lb / sq-ft	14 in-lb / sq-ft

## Specifications

<b>Effective Area</b>	8 sq. inches (52 sq. cm)
<b>Stroke</b>	1-11/16" (43 mm)
<b>Supply Pressure</b>	0 to 20 psig (138 kPa) operating 30 psig (207 kPa) maximum <i>See note under Temperature Limits</i>
<b>Supply Connection</b>	3/16" (5 mm) O.D. metal fittings

### Material

Body	CRS w/zinc and dichromate
Diaphragm	Neoprene
Bearings	Bronze/Delrin (plastic)
Shaft	CRS with nickel plating

<b>Weight</b>	2.0 lbs. (0.9 kg)
---------------	-------------------

### Spring Ranges/Retracted/Extended Torque

*(Based on 0 and 20 psi applied)*

3 to 12 psi (21-83 kPa)	20/54 in. lbs. (2/6 N•m)
5 to 10 psi (34-69 kPa)	34/67 in. lbs. (4/8 N•m)
8 to 13 psi (55-90 kPa)	54/47 in. lbs. (6/5 N•m)
3 to 8 psi (21-55 kPa)	20/81 in. lbs. (2/9 N•m)

### Temperature Limits

**NOTE:** If application requires operation near maximum temperature AND maximum pressure, install a tubing restraint at the actuator connection.

Operating	-20° to 180° F (-29° to 82° C)
Shipping	-40° to 180° F (-40° to 82° C)

### KMC Controls, Inc.

19476 Industrial Drive

New Paris, IN 46553

574.831.5250

www.kmccontrols.com