



## NEMA 4X INDUSTRIAL CONTROLS

T109 AND T115 SERIES RAINTIGHT, WEATHER RESISTANT THERMOSTATS



### HIGHLIGHTS

- One Control for Heating and/or Cooling
- NEMA 4X Enclosure Complies with N.E.C. Article 547
- Rugged, Weather Resistant Enclosure
- Corrosion Resistant Materials for Long Life
- Low Mass, High Surface Area of Sensors Provide Rapid Response to Temperature Change
- Local and Remote Sensing Models Available
- Large, Readily Visible Dial
- Multi-Positional Mounting Offers Flexibility in New or Existing Installations
- High Level of Accuracy and Sensitivity
- Meets UL and CSA Requirements
- TH109 Features Two SPDT Staged Switches

The PECO T109 and T115 NEMA 4X thermostats are intended for applications that require a rugged, weatherproof control. Typical applications include refrigeration, walk-in coolers, freezers, ventilation fans, dampers, and heating and cooling in factory buildings, greenhouses, garages, warehouses or animal confinement buildings for poultry, hogs or livestock. The unit will tolerate spraying with water, high humidity, airborne contaminants and moderately corrosive conditions.

### Put Our Experience to Work for You

Since 1938, PECO has been known for highly engineered products that set the standard for quality, performance, and reliability. Now you can buy from the best for less.

# TECHNICAL SPECIFICATIONS



## TECHNICAL SPECIFICATIONS

	TH109-009	TF115-001	TRF115-005	TRF115-007
Temperature Range	40 to 100°F / 4 to 37°C	40 to 110°F / 4 to 43°C	0 to 120°F / -18 to 49°C	-30 to 100°F / -34 to 38°C
Sensor	Stainless Steel Coiled Bulb	Stainless Steel Coiled Bulb	60" Stainless Steel Bulb/ Capillary	8' (2.44m) Copper Bulb/ Capillary
Switch	SPDT (2)	SPDT	SPDT	SPDT
Remote Temperature Sensing	No	No	Yes	Yes
Enclosure	NEMA 4X Thermoplastic	NEMA 4X Thermoplastic	NEMA 4X Thermoplastic	NEMA 4X Thermoplastic
Control	Dial Knob	Dial Knob	Dial Knob	Dial Knob
Agency Approvals	UL, CSA	UL, CSA	UL, CSA	UL, CSA

Note: For NEMA 4X installation, NEMA 4X connectors must be used.

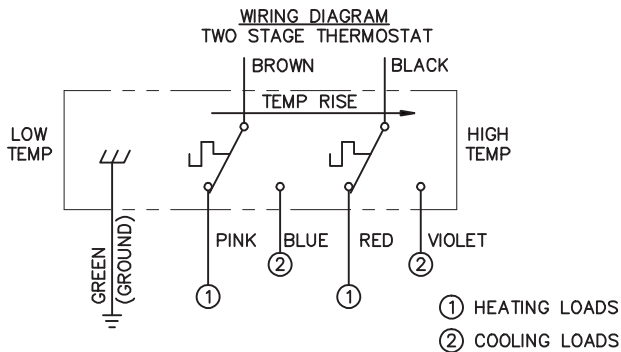
## RATINGS

VOLTAGE RATING	FULL LOAD	LOCKED ROTOR	NON-INDUCTIVE	PILOT DUTY
120 VAC	16.0A	80.0A	25.0A	125VA
208 VAC	13.2A	66.0A	25.0A	125VA
240 VAC	12.0A	60.0A	25.0A	125VA
277 VAC	10.0A	50.0A	22.0A	125VA

SUITABLE FOR 24 VAC OPERATION

## WIRING DIAGRAMS

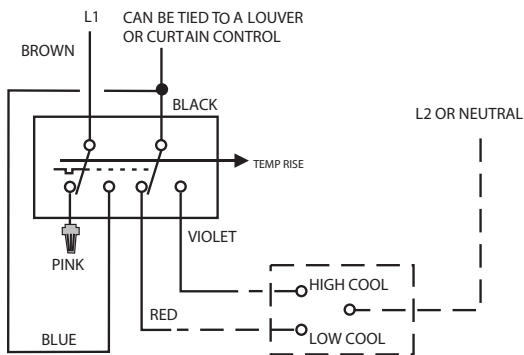
### TH109-009



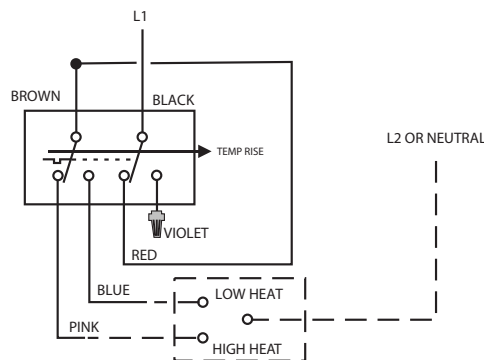
**THERMOSTAT OPERATION:** DOUBLE POLE, DOUBLE THROW CONTACTS OPERATE SEQUENTIALLY WITH 3°F (1.7°C) NOMINAL SEPARATION ON TEMPERATURE RISE OR FALL. AT TEMPERATURE ABOVE THE SET POINT, LEADS BLACK/VIOLET AND BROWN/BLUE ARE CLOSED. ON TEMPERATURE FALL TO 3°F (1.7°C) (NOMINAL) ABOVE THE SET POINT, LEADS BLACK/RED CLOSE AND BLACK/VIOLET OPEN. ON FURTHER TEMPERATURE FALL TO THE SET POINT, LEADS BROWN/PINK CLOSE AND BROWN/BLUE OPEN.

### TH109-009 CONNECTION OPTIONS

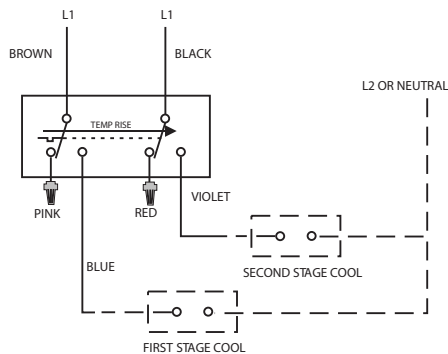
#### Two Speed Cooling Equipment



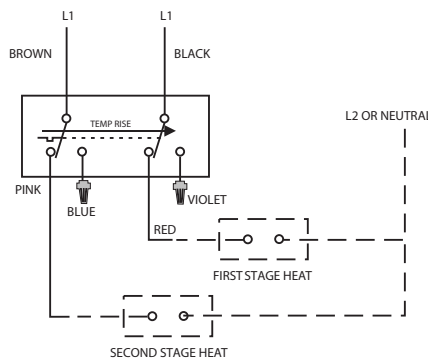
#### Two Speed Heating Equipment



#### Two Stage Cooling Equipment

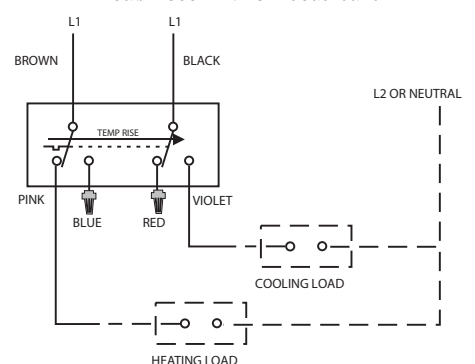


#### Two Stage Heating Equipment



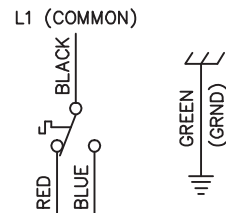
#### Auto Changeover Control

1 Heat/1 Cool with 3°F dead band



### TF115-001, TRF115-005, TRF115-007

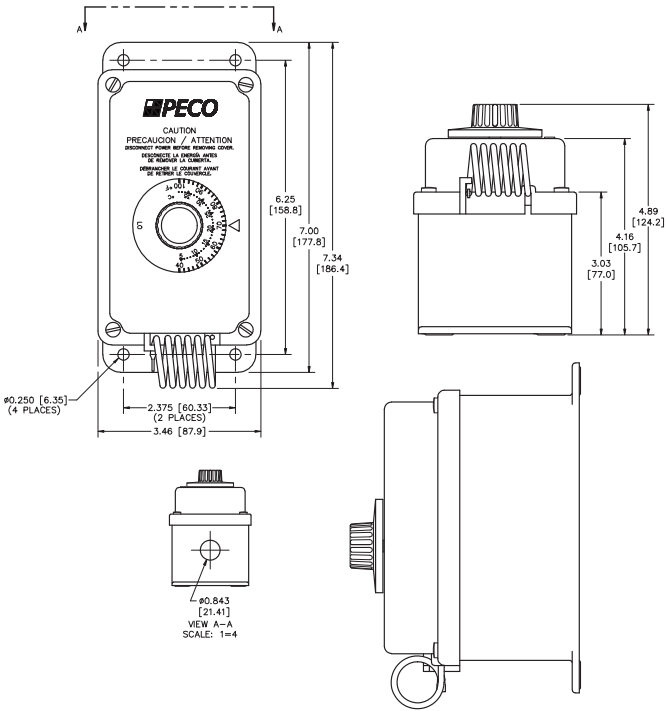
- For local sensing applications the coiled capillary bulb can be tie-wrapped to the bottom tang.



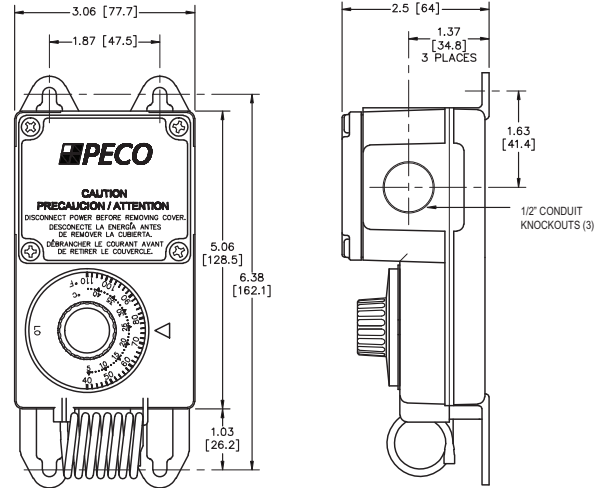
HEATING OR COOLING EQUIPMENT, SPDT, OPENS ONE CIRCUIT (RED/BLACK, REF. HEATING), CLOSES ONE CIRCUIT (BLUE/BLACK, REF. COOLING) ON TEMPERATURE RISE.

## MOUNTING INSTRUCTIONS

### TH109-009

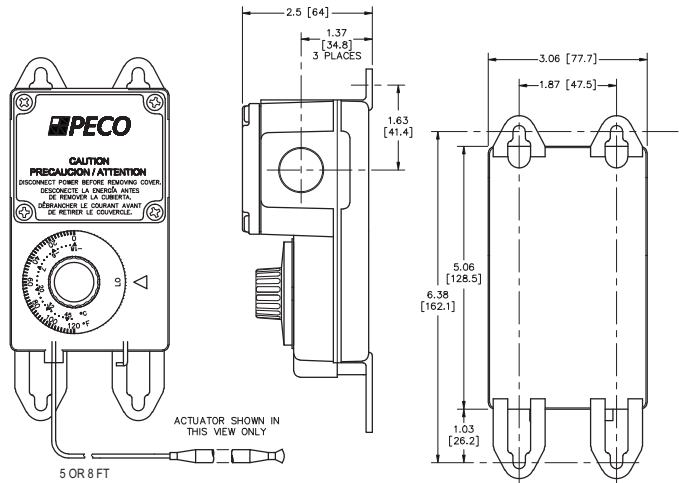


### TF115-001



### TRF115-005

### TRF115-007



## MODEL SELECTION GUIDE

MODEL	PART NUMBER	DESCRIPTION
TH109-009	68427	NEMA 4X thermostat, stainless steel coiled bulb, 40 to 100°F / 4 to 37°C
TF115-001	68471	NEMA 4X thermostat, stainless steel coiled bulb, 40 to 110°F / 4 to 43°C
TRF115-005	68426	NEMA 4X thermostat, 60" stainless steel bulb/capillary, 0 to 120°F / -18 to 49°C
TRF115-007	69320	NEMA 4X low temperature thermostat, 8' copper bulb/capillary, -30 to 100°F / -34 to 38°C



**Automation and Controls**  
 Division of PECO, Inc.  
 PO Box 82189, Portland, OR 97282

Phone: 800-874-8547 / 503-233-6401  
 Email: sales@pecomanufacturing.com  
 www.pecomanufacturing.com

**NEMA 4X RAIN TIGHT THERMOSTAT  
INSTALLATION AND OPERATING INSTRUCTIONS**

**INSTRUCCIONES DE INSTALACION Y OPERACION  
DEL THERMOSTATO A PRUEBA DE LLUVIA NEMA 4X**

**THERMOSTAT NEMA 4X ÉTANCHE AUX INTEMPÉRIES  
INSTRUCTION D'INSTALLATION ET D'UTILISATION**

**! WARNING**

To prevent overheating or fire, use this control as an operating or regulating thermostat. ALWAYS USE A BACKUP CONTROL OR ALARM if a control failure could cause the controlled appliance to overheat or could cause a fire.

Where thermostat is capable of cycling directly between heating and cooling loads, failure to provide a load transfer switch will result in thermostat failure.

Do not install, use or operate if product appears damaged, the enclosure is cracked or broken or if the sensor has been bent, crimped or is dirty.

**APPROPRIATE APPLICATION**

This thermostat has been tested by CSA and Underwriters Laboratories Inc. (UL), meets the requirements for NEMA 4X equipment and is suitable for use under the National Electrical Code (NEC), Article 547-7, when used with appropriate watertight connectors (not included).

**INSTALLATION**

**! WARNING**

To avoid electrical shock or damage to equipment, disconnect all power before installing or servicing.

To avoid potential fire and/or explosion, do not use in potentially flammable or explosive atmospheres.

Installation must be made by a trained, qualified service person in accordance with the National Electrical Code (NEC) and all applicable local codes and ordinances. Installation should meet all applicable national, state and local codes. Refer to the appropriate wiring diagram included. Locate the thermostat ( local sensing models ) or sensing bulb ( remote sensing models ) for optimum temperature sensing of the controlled space. Thermostat operation will be affected by unusual heat or cold, such as direct sunlight, near windows or doors or on outside walls.

All fittings and materials used for the installation should be approved, suitable and installed properly for the intended application. For water tightness, the cord seal or conduit hub should be UL listed and marked 4X. The conduit hub is to be tightened onto the conduit before installing in the enclosure.

Where applicable, remove knockout(s) by impacting near the inside edge of the knockout to be removed. **IMPORTANT: Do not impact, dent or use the sensor for support. This will cause calibration and/or thermostat failure.**

**! WARNING**

**READ INSTRUCTION CAREFULLY BEFORE ATTEMPTING TO INSTALL, OPERATE OR SERVICE THIS THERMOSTAT.** Failure to observe safety information and comply with instructions could result in **PERSONAL INJURY, DEATH AND/OR PROPERTY DAMAGE.** Retain these instructions for future reference. This product, when installed, will be part of an engineered system whose specifications and performance characteristics are not designed or controlled by PECO. You must review your application and national and local codes to assure that your installation will be functional and safe.

Even though this thermostat is sealed, water or dust could enter through improperly sealed wiring. A drip loop should be provided to prevent water and other liquids from entering the thermostat housing. The cord or conduit connections to the enclosure must be water and dust tight. The cover must be tightened securely to compress the gasket and provide a watertight seal. Use only screws provided. Do not over-tighten.

Maximum sensing element withstand temperature is 35°F (20°C) above the highest temperature setting. Maximum temperature for the plastic enclosure is 140°F 60°C.

**! CAUTION**

For use in wet or humid environments or where water tightness is required, failure to use suitable watertight connections and suitable drip loop could allow water to enter the enclosure resulting in thermostat failure.

Use copper wire only. Insulate or wire-nut all unused leads.

Use the grounding provisions provided for connection to the line ground and equipment ground wire.

**OPERATION AND CHECK-OUT**

Allow one hour or necessary amount of time for the thermostat and system to stabilize for normal operation. This thermostat is factory calibrated and requires no correction on site.

**TO CHECK OPERATION OF HEATING SYSTEMS:**

1. Disconnect power.
2. Place the heat/cool selector switch, if applicable, in the heat position.
3. Adjust the thermostat set point to at least 10°F (5°C) below the temperature of the controlled space.
4. Restore power.
5. Slowly adjust the thermostat knob to raise the set point. When the set point reaches the approximate temperature of the controlled space, the heating equipment should start.

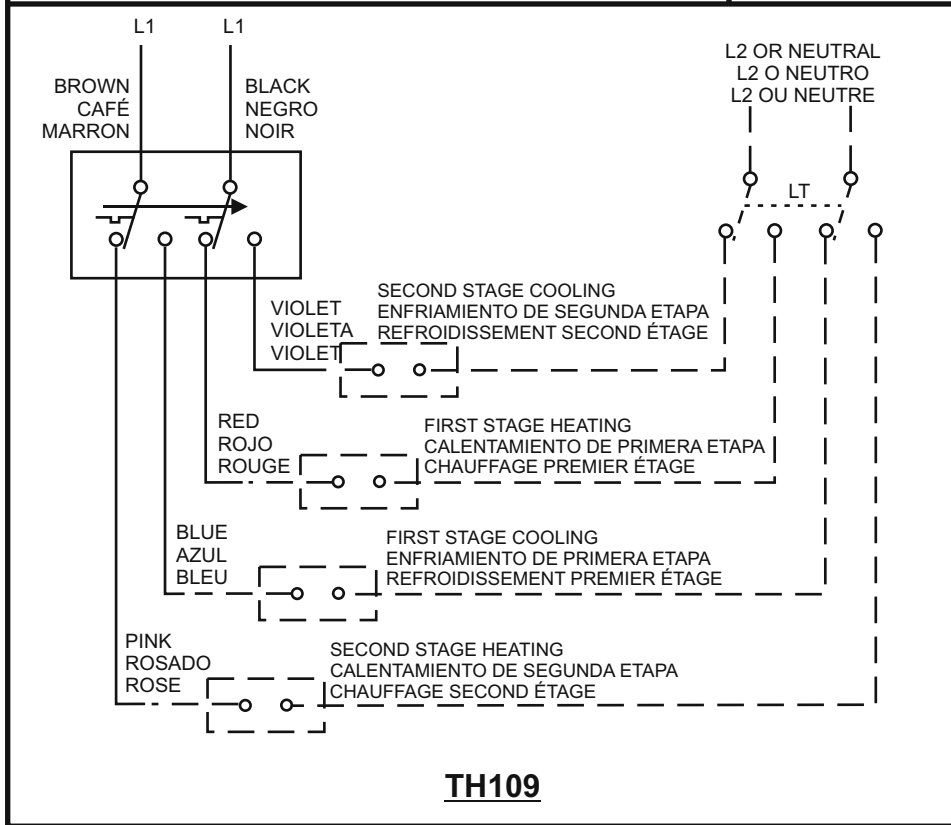
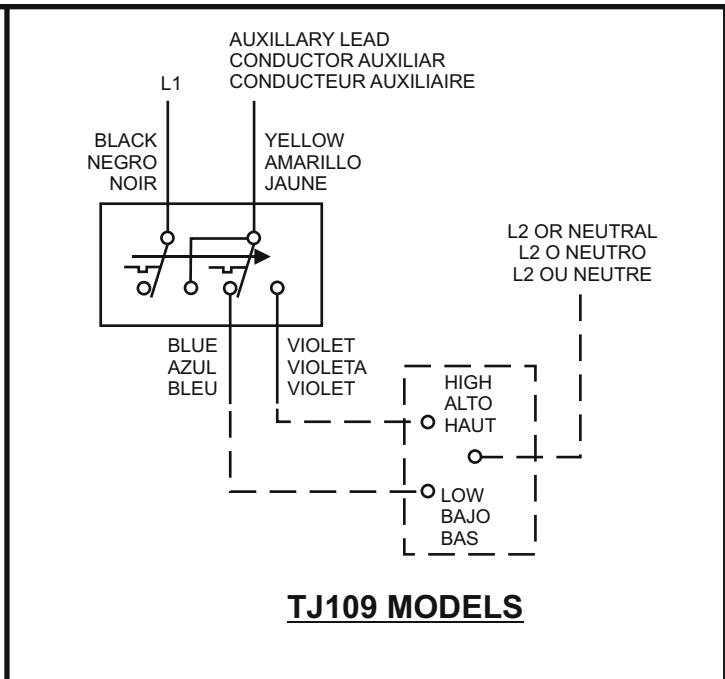
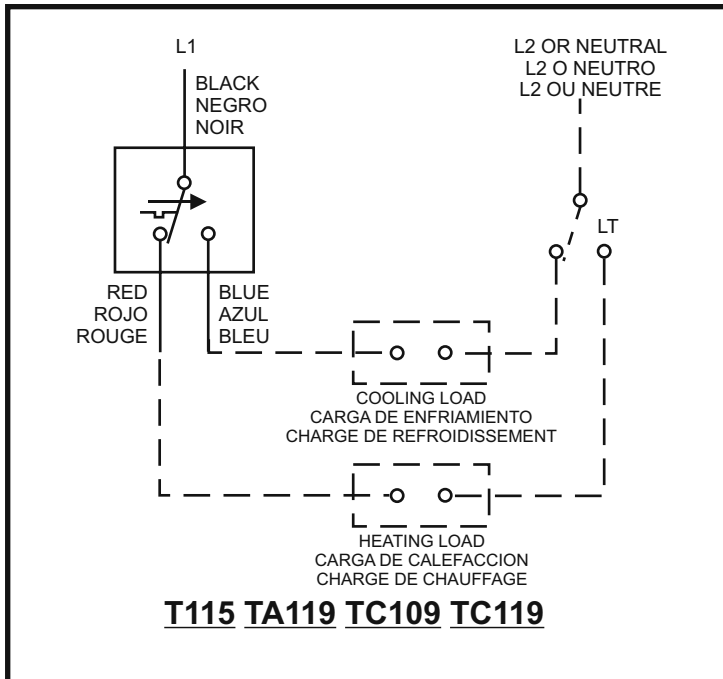
**TO CHECK OPERATION OF COOLING SYSTEMS:**

1. Disconnect power.
2. Place the heat/cool selector switch, if applicable, in the cool position.
3. Adjust the thermostat set point to at least 10°F (5°C) above the temperature of the controlled space.
4. Restore power.
5. Slowly adjust the thermostat knob to lower the set point. When the set point reaches the approximate temperature of the controlled space, the cooling equipment should start.

**LIMITED WARRANTY**

1. **WARRANTY COVERAGE.** PECO warrants to the original user of its products that the products will, at the date of initial purchase, meet the applicable specification for such products and will be free from any defects in materials or manufacture under normal use for 18 months after date of manufacture.
2. **DISCLAIMER OF WARRANTY OF PRODUCT SUITABILITY.** PECO makes no warranty to the purchaser or any third party that its products are suitable for a particular application or design. Many states and localities have differing codes or regulations governing the installation and/or use of PECO' products. PECO cannot guarantee compliance with such regulations; purchaser is solely responsible for safe and correct installation and use of the product and for compliance with applicable codes and regulations.
3. **EXCLUSION OF IMPLIED WARRANTIES.** This warranty is the only warranty applicable to this product and excludes all other warranties, including any WARRANTY OF MERCHANTABILITY, any warranty of fitness for a particular purpose, and any implied warranties otherwise arising from course of dealing or usage of trade, except where the product purchased is subject to consumer product warranty laws, in which case ANY APPLICABLE IMPLIED WARRANTIES ARE LIMITED TO 18 MONTHS, or such shorter period as permitted or required under applicable law. Some States do not allow limitations on how long an implied warranty lasts, so the above limitations may not apply to you.
4. **REMEDIES FOR NONCONFORMITY.** If the product purchased does not conform to the applicable warranty, PECO will provide, at its option and in accordance with the procedures in the following section, one of the following remedies: (1) repair of the nonconforming product, (2) replacement with a conforming product, (3) refund of the original purchase price. THESE REMEDIES SHALL BE THE EXCLUSIVE AND SOLE REMEDY for any breach of warranty.
5. **TO OBTAIN WARRANTY SERVICE.** For any product believed to be defective within the limited warranty period, first write or call dealer from whom product was purchased. Dealer will give additional directions. If unable to resolve satisfactorily, write to PECO at the address below, giving dealer's name, address, date and number of dealer's invoice, and describe the nature of the defect.
6. **LIMITATION OF LIABILITY.** PECO WILL NOT BE LIABLE FOR ANY INCIDENTAL, SPECIAL, INDIRECT OR CONSEQUENTIAL DAMAGES resulting from any defect in the product purchased. Some States do not allow the exclusion or limitation of incidental or consequential damages, so the above limitation or exclusion may not apply to you.

This warranty gives you specific legal rights, and you may also have other rights which vary from State to State.  
Manufactured by PECO, Inc.  
4709 SE 18th Avenue - Portland, OR 97202 - USA  
P.O. Box 82189 - Portland, OR 97282 - USA



**LEGEND**  
LEYENDA  
LÉGENDE

—————  
THERMOSTAT WIRING  
CABLEADO DEL TERMOSTATO  
CABLAGE DU THERMOSTAT

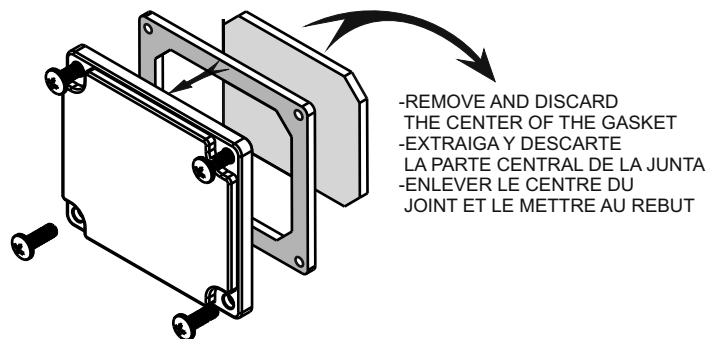
- - - - -  
FIELD WIRING  
CABLEADO EN EL TERRENO  
CABLAGE SUR PLACE

—————>  
INDICATES SEQUENCE ON  
TEMPERATURE RISE  
INDICA LA SECUENCIA CUANDO LA  
TEMPERATURA SE  
INDIQUE LA SE SÉQUENCE DE LA MONTÉE  
DE TEMPÉRATURE

LT  
LOAD TRANSFER SWITCH  
INTERRUPTOR DE TRANSFERENCIA DE CARGA  
INTERRUPTEUR DE TRANSFERT DE CHARGE

**WARNING**  
**ADVERTENCIA**  
**AVERTISSEMENT**

-TO INSURE WATER TIGHTNESS, THE ENCLOSED GASKET MUST BE INSTALLED UNDER THE WIRING CAP.  
-PARA ASEGURAR LA ESTANQUIDAD AL AGUA, LA JUNTA SUMINISTRADA DEBERÁ INSTALARSE DEBAJO DEL CASQUETE DEL ALAMBRADO.  
-POUR ASSURER L'ÉTANCHÉITÉ À L'EAU, LE JOINT STATIQUE (FOURNI) DOIT ÊTRE INSTALLÉ SOUS LE CULOT POUR CÂBLAGE.



DATE	REV	DESCRIPTION	DR.	CK.
1/2/08	4	ISO METRIC CONVERSION TO NOTES 1, 9	SEM	SR

NOTES:

1. THERMOSTAT OPERATION: DOUBLE POLE, DOUBLE THROW CONTACTS OPERATE SEQUENTIALLY WITH 3°F (1.7°C) NOMINAL SENSING RANGE. ON ALL OPERATIONS, THE THERMISTOR ABOVE THE SET POINT LEADS BLACK/VIOLET AND BROWN/BLUE ARE CLOSED, ON TEMPERATURE FALL TO 3°F (1.7°C) (NOMINAL) ABOVE THE SET POINT, LEADS BLACK/RED CLOSE AND BLACK/VIOLET OPEN, ON FURTHER TEMPERATURE FALL TO THE SET POINT, LEADS BROWN/PINK CLOSE AND BROWN/BLUE OPEN.
2. ENCLOSURE AND COVERS ARE GRAY THERMOPLASTIC. KNobs IS BLACK THERMOPLASTIC WITH WHITE MARKINGS. BLACK LOGO IS PRINTED ON COVER SURFACE.
3. COILED TEMPERATURE SENSING BULB IS TYPE 300 SERIES STAINLESS STEEL.
4. ADJUSTABLE TEMPERATURE RANGE IS 40°F TO 100°F (4°C TO 38°C).
5. BOX MAY BE MOUNTED WITH WIRING ENTRY AT TOP OR BOTTOM AS NEEDED FOR INSTALLATION REQUIREMENTS.
6. MAXIMUM AMBIENT TEMPERATURE FOR ASSEMBLY IS 140°F (60°C).
7. U.L. LISTED FILE E50023.  
C.S.A. CERTIFIED FILE NO. LR30247.
8. OPENING ON ONE END, 1/2" CONDUIT SIZE, PROVIDES FOR U.L. LISTED RAINTIGHT CORD SEAL OR CONDUIT HUB, WITH COVER ASSEMBLED IN PLACE THE ENCLOSURE WILL MEET NEMA 4X "RAINTIGHT" RATING.
9. LOAD LEADS AND GROUND LEAD ARE #14 AWG 600V, 105°C (221°F) STRANDED COPPER WIRE. FREE LEAD LENGTH IS 6" [152] MINIMUM WITH WIRE ENDS STRIPPED TO 0.62" [15.7].

10. ELECTRICAL RATING:		RESISTIVE		PILOT	
VAC	INDUCTIVE	FLA	IRA	AMPS	DUTY
120	16.0	80.0	23	125	VA
208	13.2	60.0	23	125	VA
240	12.0	60.0	23	125	VA
277	10.0	50.0	22	125	VA

SUITABLE FOR 24 VAC OPERATION  
11. ELECTRICAL RATING AND GROUNDING INSTRUCTION LABEL AFFIXED TO INSIDE OF ENCLOSURE.

12. MARKING TO INCLUDE:

4M92  
E50023  
LR30247

DC (DC REPRESENTS A DATE CODE.)

13. UNIT IS INDIVIDUALLY BOXED WITH LOOSE INSTRUCTION SHEET, INDIVIDUAL AND MASTER CARTONS MARKED WITH REQUIRED IDENTIFICATION, PACKED 20 UNITS PER MASTER CARTON.

14. STAINLESS STEEL COVER SCREWS PACKED IN ENVELOPE.

15. THERMOSTAT OPERATION IS NOT AFFECTED BY MOUNTING POSITION.

16. THIS ASSEMBLY AND ALL COMPONENTS AND SUBASSEMBLIES CONTAINED WITHIN THIS ASSEMBLY MUST MEET ENVIRONMENTAL IMPACT REQUIREMENTS SPECIFIED IN TI-698.

17. NOTES MARKED WITH **Ⓢ** CONTAIN SPECIFICATIONS THAT MUST BE CERTIFIED BY THE VENDOR WITH EACH SHIPMENT.

REF: 4M92 DIMENSIONS IN [ ] ARE IN MILLIMETER

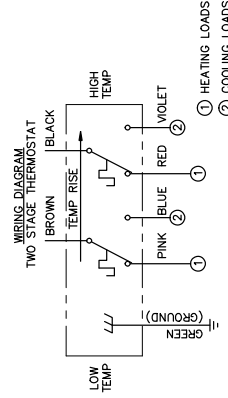
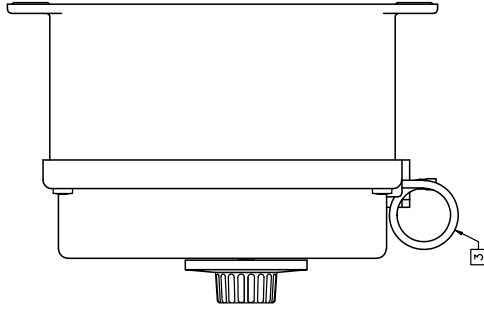
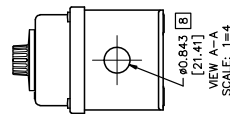
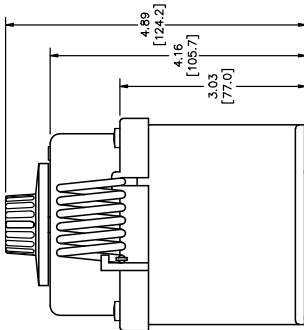
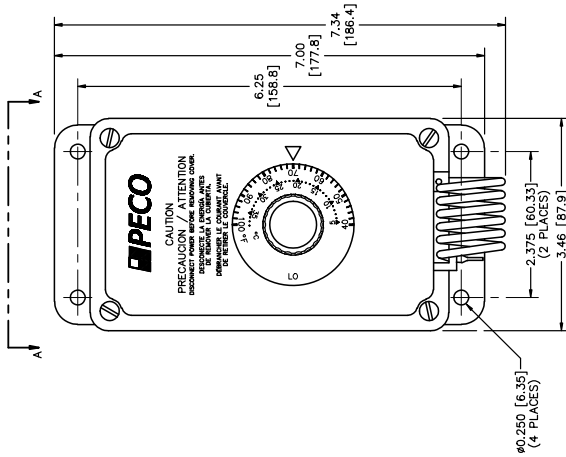
TOLERANCES EXCEPT AS NOTED

**PECO** PECO, INC.  
PORTLAND, OR, USA

PART NUMBER SCALE  
68427 HALF

TITLE  
STAT ASSY, TH109-009

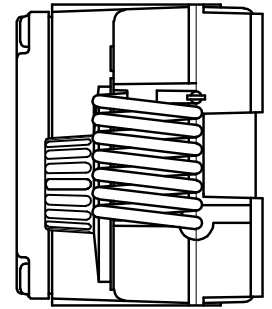
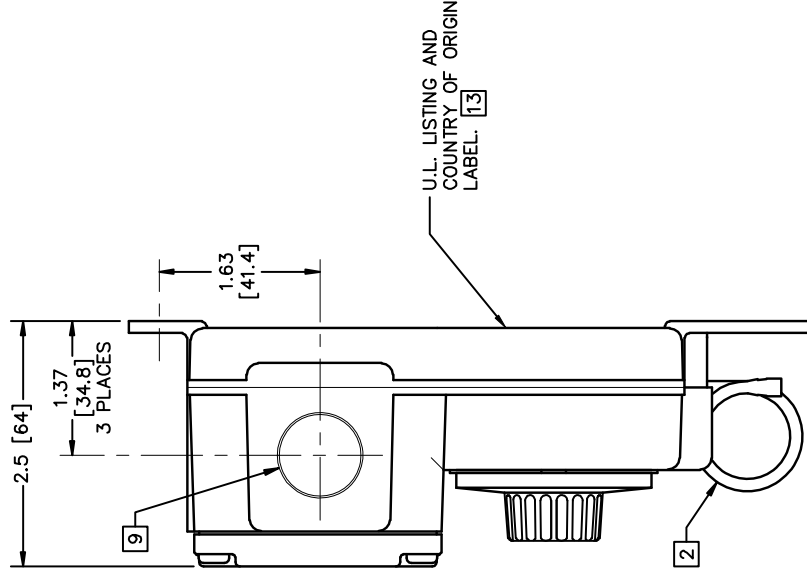
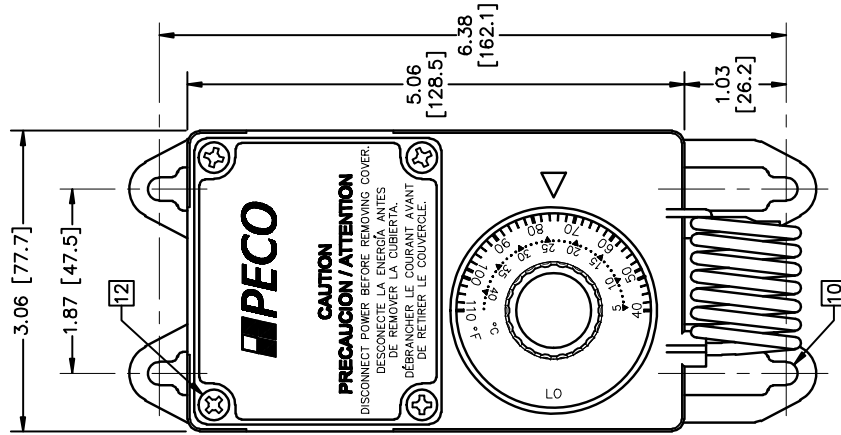
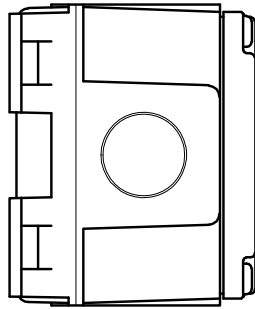
SHEET SIZE DRAWING NUMBER  
B TH109-009



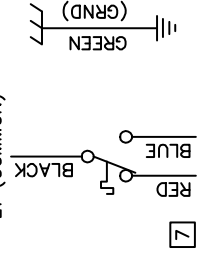
DATE	REV	DESCRIPTION	DR.	CK.
1/2/08	6	ECN 7719 ADD METRIC CONVERSION TO NOTE 8	SEM	SR

NOTES:

- SPDT THERMOSTAT IS HOUSED WITHIN RAIN-TIGHT LIGHT GRAY PLASTIC TYPE 4X ENCLOSURE. BLACK KNOB HAS WHITE MARKINGS.
- COILED TEMPERATURE SENSING BULB IS TYPE 300 SERIES STAINLESS STEEL.
- ADJUSTABLE TEMPERATURE RANGE IS 40°F TO 110°F (4°C TO 43°C) ONE DIAL DIVISION EQUALS 2°F (1.1°C).
- U.L. LISTED FILE E50023. C.S.A. CERTIFIED FILE NO. LR30247.



L1 (COMMON)



HEATING OR COOLING EQUIPMENT, SPDT, OPENS ONE CIRCUIT (RED/BLACK, REF. HEATING), CLOSES ONE CIRCUIT (BLUE/BLACK, REF. COOLING) ON TEMPERATURE RISE.

5. MAXIMUM AMBIENT TEMPERATURE FOR ASSEMBLY IS 140°F (60°C).

6. ELECTRICAL RATING:

VAC	INDUCTIVE		RESISTIVE AMPS	PILOT DUTY
	FLA	LRA		
120	16.0	80.0	25	125 VA
208	13.2	66.0	25	125 VA
240	12.0	60.0	25	125 VA
277	10.0	50.0	22	125 VA
480	---	---	5	125 VA

SUITABLE FOR 24 VAC OPERATION

7. FOR TYPICAL CIRCUIT, WHERE BOTH HEATING AND COOLING LOADS ARE CONNECTED TO THE THERMOSTAT, A MANUAL OR AUTOMATIC SELECTOR SWITCH IS REQUIRED FOR ISOLATION OF LOADS.

8. LOAD LEADS ARE #14 AWG 600V 105°C (221°F) STRANDED COPPER WIRE. FREE LEAD LENGTH IS 6" [152] MINIMUM WITH WIRE ENDS STRIPPED TO 0.62" [15.7].

9. KNOCKOUT ALSO IN FAR SIDE OF WIRING COMPARTMENT. 1/2" TRADE SIZE KNOCKOUTS AT 3 LOCATIONS PROVIDE FOR U.L. LISTED RAIN-TIGHT CORD SEALS OR CONDUIT HUBS.

10. ENCLOSURE MOUNTS TO WALL OR PANEL SURFACE WITH #8 OR WITH #10 SCREWS.

11. MARKING TO INCLUDE:  
TF115-001  
E50023  
LR30247  
DC (DC REPRESENTS A DATE CODE.)

12. UNIT IS INDIVIDUALLY BOXED WITH INSTRUCTION SHEET. COVER, GASKET, AND SCREWS (SHOWN IN THE ASSEMBLED POSITION) ARE PACKED WITH UNIT, 20 UNITS PER MASTER CARTON.

13. APPLY U.L. LISTING AND COUNTRY OF ORIGIN LABEL TO BACK OF ENCLOSURE. LABEL PER BOM.

14. THIS ASSEMBLY AND ALL COMPONENTS AND SUBASSEMBLIES CONTAINED WITHIN THIS ASSEMBLY MUST MEET ENVIRONMENTAL IMPACT REQUIREMENTS SPECIFIED IN TI-698.

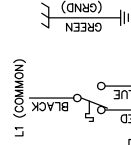
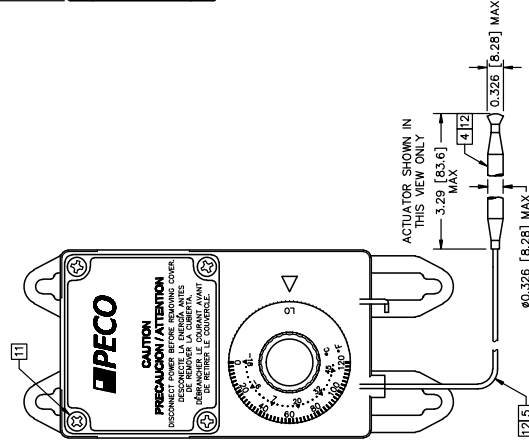
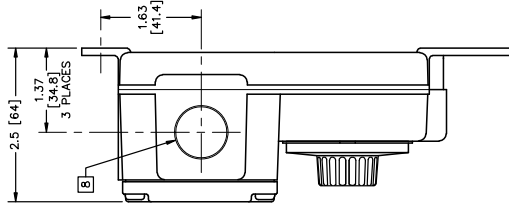
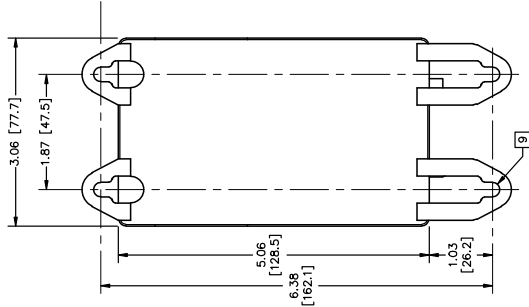
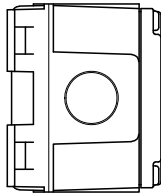
15. NOTES MARKED WITH ● CONTAIN SPECIFICATIONS THAT MUST BE CERTIFIED BY THE VENDOR WITH EACH SHIPMENT.

DIMENSIONS IN [ ] ARE IN MILLIMETER

TOLERANCES EXCEPT AS NOTED	<b>PECO</b> PECO, INC. PORTLAND, OR, USA		
DECIMAL .X= .XX= .XXX=	PART NUMBER 68471	SCALE HALF	
ANGULAR ±	TITLE STAT ASSY, TF115-001		
ACAD FILE TF115001A	SHEET SIZE A	DRAWING NUMBER TF115-001A	



DATE	REV	DESCRIPTION	DR.	CK.
1/2/08	5	ISO METRIC CONVERSION TO NOTES 2, 5, 7	SEM	SR



HEATING OR COOLING EQUIPMENT, SPD, OPENS ONE CIRCUIT (RED/BLACK, REF. HEATING) CLOSSES ONE CIRCUIT (BLUE/BLACK, REF. COOLING) ON TEMPERATURE RISE.

NOTES:

- SPDT THERMOSTAT IS HOUSED WITHIN RAINIGHT LIGHT GRAY PLASTIC TYPE 4X ENCLOSURE. BLACK KNOB HAS WHITE MARKINGS.
- ADJUSTABLE TEMPERATURE RANGE IS 0F TO 120F (-18C TO 49C). ONE DIAL DIVISION EQUALS 2.5F (1.4C).
- U.L. LISTED FILE E50023. C.S.A. CERTIFIED FILE NO. LR30247.
- MAXIMUM AMBIENT TEMPERATURE FOR ENCLOSURE ASSEMBLY IS 140F (60C). MAXIMUM TEMPERATURE FOR SENSING BULB IS 160F (71C).
- CAPILLARY LENGTH IS 60" [1524]. AVOID SHARP BENDS, 0.25 [6.4] MINIMUM INSIDE RADIUS.

6. ELECTRICAL RATINGS:

VAC	INDUCTIVE	RESISTIVE	PILOT DUTY
FLA	LRA	AMPS	
120	16.0	80.0	25
208	13.2	66.0	25
240	12.0	60.0	25
275	10.0	50.0	22
480	---	---	5

SUITABLE FOR 24 VAC OPERATION

- LOAD LEADS ARE #14 AWG 600V 105C (221F) STRANDED COPPER WIRE. FREE LEAD LENGTH IS 6" [152] MINIMUM WITH WIRE ENDS STRIPPED TO 0.62" [15.7].

- KNOCKOUT ALSO IN FAR SIDE OF WIRING COMPARTMENT. 1/2" TRADE SIZE KNOCKOUTS AT 3 LOCATIONS PROVIDE FOR U.L. LISTED RAINIGHT CORD SEALS OR CONDUIT HUBS.

- ENCLOSURE MOUNTS TO WALL OR PANEL SURFACE WITH #8 OR WITH #10 SCREWS.

- MARKING TO INCLUDE:

4MY93  
E50023  
LR30247

- (DC REPRESENTS A DATE CODE.)

- UNIT IS INDIVIDUALLY BOXED WITH INSTRUCTION SHEET, COVER, GASKET, AND SCREWS (SHOWN IN THE ASSEMBLED POSITION) ARE PACKED WITH UNIT. 20 UNITS PER MASTER CARTON.

- BULB AND CAPILLARY ARE CONSTRUCTED OF CORROSION RESISTANT STAINLESS STEEL OR PLATED COPPER.

- THIS ASSEMBLY AND ALL COMPONENTS AND SUBASSEMBLIES CONTAINED WITHIN THIS ASSEMBLY MUST MEET ENVIRONMENTAL IMPACT REQUIREMENTS SPECIFIED IN TI-698.

- NOTES MARKED WITH ● CONTAIN SPECIFICATIONS THAT MUST BE CERTIFIED BY THE VENDOR WITH EACH SHIPMENT.

REF: 4MY93

DIMENSIONS IN [ ] ARE IN MILLIMETER

TOLERANCES EXCEPT AS NOTED	PECO, INC. PORTLAND, OR, USA	
DECIMAL	PART NUMBER	SCALE
.X=	68426	HALF
.XX=		
.XXX=		
ANGULAR	TITLE	
ACAD FILE	SHEET SIZE	DRAWING NUMBER
TRF115005	B	STAT ASSY, TRF115-005 TRF115-005

