



FASCO MODEL	TYPE	HP	VOLTS	RPM	SPD.	AMPS	ENCLOSURE	ROT.	BRNG.	SHAFT DIM.	"A" DIM.	FIG.	NOTES
SHAFT UP OR HORIZONTAL													
D720	PSC	1/5	208-230	1075	1	1.5	Open Vent.	REV	SLV	1/2 x 6	3 1/4	A	68,87,88,89,90
D719	PSC	1/5-1/8	208-230	1075	2	1.3-.8	Open Vent.	REV	SLV	1/2 x 6-1/2	3 3/4	A	68,87,88,89,90
D7749	PSC	1/4	208-230	1075	1	1.7	Open Vent.	REV	BALL	1/2 x 6-1/2	3 3/4	B	68,87,88,89,90
D749	PSC	1/4	208-230	1075	1	1.8	Open Vent.	REV	SLV	1/2 x 6-1/2	3 3/4	C	68,87,88,89,90
D939	PSC	1/4	208-230	1075	1	2.1	Open Vent.	REV	BALL	1/2 x 6	4	C	68,87,88,89,90
D940	PSC	3/4	208-230	1075	1	4.4	Open Vent.	REV	BALL	1/2 x 6-1/4	5 1/3	D	91
D739	PSC	1/4-1/6	208-230	1075	2	2-1.3	Open Vent.	REV	BALL	1/2 x 6	4 1/4	E	68,87,88,89,90
D747	PSC	1/3	208-230	1075	1	2.5	Open Vent.	REV	SLV	1/2 x 6	4 3/4	F	68,87,88,89,90
D937	PSC	1/3	208-230	1075	1	2.9	Open Vent.	REV	BALL	1/2 x 6-1/2	4	F	68,87,88,89,90
D7748	PSC	1/3	208-230	1075	1	2.9	Open Vent.	REV	BALL	1/2 x 6-1/2	4 1/4	G	68,87,88,89,90
D748	PSC	1/3	208-230	1075	1	2.9	Open Vent.	REV	SLV	1/2 x 6-1/2	4 1/4	F	68,87,88,89,90
D737	PSC	1/3-1/4	208-230	1075	2	3.5-1.9	Open Vent.	REV	BALL	1/2 x 6	4 1/2	E	68,87,88,89,90
D935	PSC	1/2	208-230	1075	1	4.1	Open Vent.	REV	BALL	1/2 x 6-1/2	5	C	68,87,88,89,90,92
D7745	PSC	1/2	208-230	1075	1	3.7	Open Vent.	REV	BALL	1/2 x 6-1/2	4 3/4	H	68,87,88,89,90,92
D745	PSC	1/2	208-230	1075	1	3.7	Open Vent.	REV	SLV	1/2 x 6-1/2	4 3/4	C	68,87,88,89,90,92
D735	PSC	1/2-1/3	208-230	1075	2	4.4-2.7	Open Vent.	REV	BALL	1/2 x 6	5 1/4	E	48,68,87,88,89,90
D929	PSC	3/4	208-230	1075	1	5	Open Vent.	REV	SLV	1/2 x 6-1/4	5 1/4	C	68,87,88,89,90,92
D930	PSC	3/4-1/3	208-230	1075	2	4.4-2.1	Open Vent.	REV	BALL	1/2 x 6-1/4	5 1/4	D	68,87,88,89,90,91
D951	PSC	3/4-1/3	208-230	1075	2	5-2.2	Open Vent.	REV	BALL	5/8 x 4-1/2 KEYED	5 1/4	D	68,87,88,89,90,91
D1709	PSC	1	208-230	1075	1	5.5	Open Vent.	REV	BALL	1/2 x 6-1/2	5 13/16	I	68,87,88,89,90,91,93
SHAFT DOWN OR HORIZONTAL													
S719	PSC	1/5-1/8	208-230	1075	2	1.3-.8	Open Vent.	REV	SLV	1/2 x 6-1/2	3 3/4	J	68,89,94,95
D743	PSC	1/5	208-230	1075	1	1.2	Open Vent.	REV	SLV	1/2 x 6	3 1/2	J	68,89,94,95
D742	PSC	1/4	208-230	1075	1	2.1	Open Vent.	REV	SLV	1/2 x 6	4	J	68,89,94,95
D944	PSC	1/3	208-230	1075	1	2.9	Open Vent.	REV	SLV	1/2 x 6	4 1/4	J	68,89,95
D744	PSC	1/3-1/4	208-230	1075	2	3.2-2.4	Open Vent.	REV	SLV	1/2 x 6-1/2	4 3/4	J	68,89,95
D740	PSC	1/2	208-230	1075	1	4.5	Open Vent.	REV	SLV	1/2 x 6-1/2	5	J	68,89,95

NOTES: 48: 7.5M 370V Capacitor 68: Electrically Reversible 87: Includes shaft water slinger 88: 60° ambient temperature rating 89: Closed end shield shaft end 90: All angle mount bearings 91: 15M 370V Capacitor 92: 10M 370V Capacitor 93: Open vented on opposite shaft end 94: Has 4 drilled and tapped holes in shell 95: All angle mount bearings. Use rain shield when necessary.



FIG. A D720, D719



FIG. B D7749



FIG. C D749, D939, D935, D745, D929



FIG. D D940, D930, D951



FIG. E D739, D737, D735



FIG. F D747, D937, D748



FIG. G D7748



FIG. H D7745



FIG. I D1709



FIG. J S719, D743, D742, D944, D744, D740



FASCO MODEL	TYPE	HP	VOLTS	RPM	SPD.	AMPS	ENCLOSURE	ROT.	BRNG.	SHAFT DIM.	"A" DIM.	FIG.	NOTES
825 RPM MOTORS													
D799	PSC	1/8	208-230	825	1	0.9	Totally Encl.	REV	SLV	1/2 x 6	4	A	68,88,94,95
D793	PSC	1/6	208-230	825	1	1	Totally Encl.	REV	BALL	1/2 x 6	4	B	68,88,95
D798	PSC	1/6	208-230	825	1	1.3	Totally Encl.	REV	SLV	1/2 x 6	4 1/3	A	68,88,94,95
D794	PSC	1/5	208-230	825	1	1.3	Totally Encl.	REV	SLV	1/2 x 6	4 1/3	A	68,88,94,95
D934	PSC	1/4	208-230	825	1	1.9	Totally Encl.	REV	SLV	1/2 x 6	4 1/3	C	68,88,94,95
D792	PSC	1/4	208-230	825	1	1.8	Open Vent.	REV	BALL	1/2 x 6	4 1/4	C	68,88,94,95,96
D797	PSC	1/4	208-230	825	1	1.8	Open Vent.	REV	SLV	1/2 x 6	4 1/4	D	68,88,94,95,97
D936	PSC	1/3	208-230	825	1	2	Totally Encl.	REV	SLV	1/2 x 6	5	C	48,68,88,95
D796	PSC	1/3	208-230	825	1	2.6	Open Vent.	REV	SLV	1/2 x 6	5	D	68,88,94,95,97
D791	PSC	1/3	208-230	825	1	2.6	Open Vent.	REV	BALL	1/2 x 6	5	C	68,88,94,95,96
D795	PSC	1/3	115	825	1	6.1	Open Vent.	REV	BALL	1/2 x 6	5 3/4	C	68,88,95,96
D938	PSC	1/2	208-230	825	1	3.4	Open Vent.	REV	BALL	1/2 x 6	5 1/2	E	68,88,95
D790	PSC	1/2	208-230	825	1	3.5	Open Vent.	REV	BALL	1/2 x 6	5	C	68,88,95
D713	PSC	1/2	208-230	825	1	3.0	Totally Encl.	REV	SLV	1/2 x 6	5 1/3	F	68,95
DESERT LINE													
D1745	PSC	1/2	208-230	1075	1	4.1	Open Vent.	REV	SLV	1/2 x 6-1/2	5	G	68,88,95
D1748	PSC	1/3	208-230	1075	1	2.9	Open Vent.	REV	SLV	1/2 x 6-1/2	4	G	68,88,95
D1749	PSC	1/4	208-230	1075	1	2.1	Open Vent.	REV	SLV	1/2 x 6	4	G	68,88,95
TOTALLY ENCLOSED MOTORS													
D919	PSC	1/8	208-230	1075	1	0.9	Totally Encl.	REV	SLV	1/2 x 6-1/2	3 3/4	H	68,88,90,94
D905	PSC	1/6-1/8	208-230	1075	2	1.2-9	Totally Encl.	REV	SLV	1/2 x 6-1/2	3 3/4	I	68,88,90
D917	PSC	1/6	208-230	1075	1	1	Totally Encl.	REV	SLV	1/2 x 6-1/2	3 3/4	H	68,88,90,94
D906	PSC	1/5	208-230	1075	1	1.2	Totally Encl.	REV	SLV	1/2 x 6-1/2	4	H	68,88,90,94
D904	PSC	1/4-1/5	208-230	1075	2	1.8-1	Totally Encl.	REV	SLV	1/2 x 6-1/2	4 1/4	I	68,88,90
D1702	PSC	1/4-1/8	208-230	1075	2	1.7-8	Totally Encl.	REV	BALL	1/2 x 6	4	I	68,88,90
D922	PSC	1/4	208-230	1075	1	1.8	Totally Encl.	REV	SLV	1/2 x 6-1/2	4 1/3	I	68,88,90,98
D7909	PSC	1/4	208-230	1075	1	1.8	Totally Encl.	REV	BALL	1/2 x 6-1/2	4	J	68,88,90,94
D909	PSC	1/4	208-230	1075	1	1.8	Totally Encl.	REV	SLV	1/2 x 6-1/2	4	H	68,88,90,94
D903	PSC	1/3-1/4	208-230	1075	2	2.7-1.3	Totally Encl.	REV	SLV	1/2 x 6-1/2	4 3/4	I	48,68,88,90
D1701	PSC	1/3-1/4	208-230	1075	2	2.2-1.3	Totally Encl.	REV	BALL	1/2 x 5-1/2	5	I	48,68,88,90
D925	PSC	1/3	208-230	1075	1	2.7	Totally Encl.	REV	SLV	1/2 x 6-1/2	4 3/4	I	48,68,88,90,98
D7908	PSC	1/3	208-230	1075	1	2.6	Totally Encl.	REV	BALL	1/2 x 6-1/2	4 1/2	J	48,68,88,90,94
D908	PSC	1/3	208-230	1075	1	2.4	Totally Encl.	REV	SLV	1/2 x 6-1/2	4 1/2	H	48,68,88,90,94

NOTES: 48: 7.5M 370V Capacitor 68: Electrically Reversible 88: 60° ambient temperature rating 90: All angle mount bearings 94: Has 4 drilled and tapped holes in shell 95: All angle mount bearings. Use rain shield when necessary. 96: Shaft up or horizontal applications 97: Shaft down or horizontal applications 98: Motor has increased stack for higher ambient temperatures



FIG. A D799, D798, D794



FIG. B D793



FIG. C D934, D792, D936, D791, D795, D790



FIG. D D797, D796



FIG. E D938



FIG. F D713



FIG. G D1745, D1748, D1749



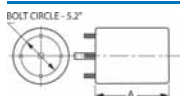
FIG. H D919, D917, D906, D909, D908



FIG. I D905, D904, D1702, D922, D903, D1701, D925



FIG. J D7909, D7908



Thermally protected • UL recognized • CSA or ULc certified
 NOTE: Rotation is determined by looking at shaft end. Shaft length is measured from motor face.

5.6" Diameter



FASCO MODEL	TYPE	HP	VOLTS	RPM	SPD.	AMPS	ENCLOSURE	ROT.	BRNG.	SHAFT DIM.	"A" DIM.	FIG.	NOTES
TOTALLY ENCLOSED MOTORS (cont.)													
D1700	PSC	1/2-1/3	208-230	1075	2	3.7-1.9	Totally Encl.	REV	BALL	1/2 x 5-1/2	5	A	48,68,88,90
D932	PSC	1/2	208-230	1075	1	3.9	Totally Encl.	REV	SLV	1/2 x 6-1/2	5 5/8	A	68,88,90,92,98
D7907	PSC	1/2	208-230	1075	1	3.7	Totally Encl.	REV	BALL	1/2 x 6-1/2	5	B	68,88,90,92
D907	PSC	1/2	208-230	1075	1	3.7	Totally Encl.	REV	SLV	1/2 x 6-1/2	4 3/4	C	68,88,90,92
D933	PSC	3/4	208-230	1075	1	5	Totally Encl.	REV	SLV	1/2 x 6-1/2	5 3/4	A	68,88,90,91,98
D931	PSC	3/4	208-230	1075	1	4.5	Totally Encl.	REV	BALL	1/2 x 6-1/2	5 1/4	C	68,88,90,91

NOTES: 48: 7.5M 370V Capacitor 68: Electrically Reversible 88: 60° ambient temperature rating 90: All angle mount bearings 91: 15M 370V Capacitor 92: 10M 370V Capacitor 98: Motor has increased stack for higher ambient temperatures

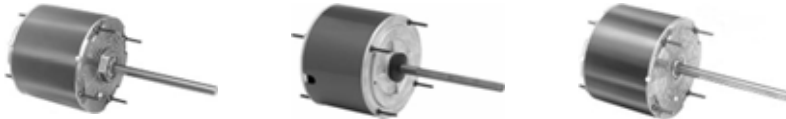


FIG. A **D1700, D932, D933** FIG. B **D7907**

FIG. C **D907, D931**

FASCO MODEL	HP	VOLTS	COOLING	HEATING	SPEED CONN.	CAP.	CAP. @ 208V	CAP. @ 230V	RPM	AMPS	ENCLOSURE	ROT.	BRNG.	SHAFT DIM.	"A" DIM.	FIG.	NOTES
CONDENSER FAN MOTORS																	
D2826	1/3	208-230			High		10 MFD		825	1.9	Totally Encl.	REV	BALL	1/2 x 5	5 1/4	A	94
	1/4				High		10 MFD		825	1.5	Totally Encl.	REV	BALL	1/2 x 5	5 1/4	A	94
	1/5				Low			7.5 MFD	825	1.2	Totally Encl.	REV	BALL	1/2 x 5	5 1/4	A	94
	1/6				Low			7.5 MFD	825	1.0	Totally Encl.	REV	BALL	1/2 x 5	5 1/4	A	94
D837	1/3	208-230			High		7.5 MFD		1075	2.6	Totally Encl.	REV	SLV	1/2 x 6-1/2	4 1/2	A	94
	1/4				High		7.5 MFD		1075	2.5	Totally Encl.	REV	SLV	1/2 x 6-1/2	4 1/2	A	94
	1/5				Low			5 MFD	1075	2.0	Totally Encl.	REV	SLV	1/2 x 6-1/2	4 1/2	A	94
	1/6				Low			5 MFD	1075	1.8	Totally Encl.	REV	SLV	1/2 x 6-1/2	4 1/2	A	94
D2827	1/3	208-230			High		12.5 MFD		1075	3.0	Totally Encl.	REV	BALL	1/2 x 5	5 1/4	A	94
	1/4				High		12.5 MFD		1075	2.2	Totally Encl.	REV	BALL	1/2 x 5	5 1/4	A	94
	1/5				Low			10 MFD	1075	1.6	Totally Encl.	REV	BALL	1/2 x 5	5 1/4	A	94
	1/6				Low			10 MFD	1075	1.3	Totally Encl.	REV	BALL	1/2 x 5	5 1/4	A	94
DIRECT DRIVE FAN & BLOWER MOTORS																	
D2835	1/2	115	High	Med-Low		10 MFD			1075	7.3	Open Vent.	REV	SLV	1/2 x 3-3/4	4 3/4	B	94
	1/3		High	Med-Low		5 MFD			1075	6.9	Open Vent.	REV	SLV	1/2 x 3-3/4	4 3/4	B	94
	1/4		Med-Hi	Low		5 MFD			1075	5.5	Open Vent.	REV	SLV	1/2 x 3-3/4	4 3/4	B	94
	1/5		Med-Low	Low		5 MFD			1075	3.6	Open Vent.	REV	SLV	1/2 x 3-3/4	4 3/4	B	94
	1/6		Low	Low		5 MFD			1075	2.8	Open Vent.	REV	SLV	1/2 x 3-3/4	4 3/4	B	94
D833	1/2	208-230	High	Med-Low		10 MFD			1075	3.6	Open Vent.	REV	BALL	5/8 x 4-1/2	4 3/4	B	94
	1/3		High	Med-Low		5 MFD			1075	3.5	Open Vent.	REV	BALL	5/8 x 4-1/2	4 3/4	B	94
	1/4		Med-Hi	Low		5 MFD			1075	2.8	Open Vent.	REV	BALL	5/8 x 4-1/2	4 3/4	B	94
	1/5		Med-Low	Low		5 MFD			1075	1.9	Open Vent.	REV	BALL	5/8 x 4-1/2	4 3/4	B	94
	1/6		Low	Low		5 MFD			1075	1.3	Open Vent.	REV	BALL	5/8 x 4-1/2	4 3/4	B	94
D2832	3/4	115	High	Med-Low		20 MFD			1075	8.1	Open Vent.	REV	SLV	1/2 x 5	5 3/4	C	94
	1/2		High	Low		10 MFD			1075	6.6	Open Vent.	REV	SLV	1/2 x 5	5 3/4	C	94
	1/3		Med-Hi	Low		10 MFD			1075	4.6	Open Vent.	REV	SLV	1/2 x 5	5 3/4	C	94
	1/4		Med-Low	Low		10 MFD			1075	3.8	Open Vent.	REV	SLV	1/2 x 5	5 3/4	C	94
	1/5		Low	Low		10 MFD			1075	3.1	Open Vent.	REV	SLV	1/2 x 5	5 3/4	C	94
D2833	3/4	208-230	High	Med-Low		20 MFD			1075	3.8	Open Vent.	REV	SLV	1/2 x 5-1/2	5 3/4	C	94
	1/2		High	Low		10 MFD			1075	3.7	Open Vent.	REV	SLV	1/2 x 5-1/2	5 3/4	C	94
	1/3		Med-Hi	Low		10 MFD			1075	2.5	Open Vent.	REV	SLV	1/2 x 5-1/2	5 3/4	C	94
	1/4		Med-Low	Low		10 MFD			1075	1.8	Open Vent.	REV	SLV	1/2 x 5-1/2	5 3/4	C	94
	1/5		Low	Low		10 MFD			1075	1.7	Open Vent.	REV	SLV	1/2 x 5-1/2	5 3/4	C	94

NOTES: 94: Has 4 drilled and tapped holes in shell



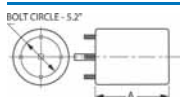
FIG. A D2826, D837, D2827



FIG. B D2835, D833



FIG. C D2832, D2833



Thermally protected • UL recognized • CSA or ULc certified
NOTE: Rotation is determined by looking at shaft end. Shaft length is measured from motor face.



FASCO MODEL	TYPE	HP	VOLTS	RPM	SPD.	AMPS	ENCLOSURE	ROT.	BRNG.	SHAFT DIM.	"A" DIM.	FIG.	NOTES
208/230 VAC MOTORS													
▶ D5458	PSC	1/5-1/4-1/3	208-230	1075	1	2.0	Totally Encl.	REV	SLV	1/2 x 6-3/4	4 1/4	A	48,68,94
▶ D5459	PSC	1/8-1/6	208-230	1075	1	1.0	Totally Encl.	REV	SLV	1/2 x 6-3/4	3 3/4	A	68,94
230/460 VAC MOTORS WITH INTERNAL COOLING FAN													
S2846	PSC	1/2	230/460	1075	1	3.9/2.0	Open Vent.	REV	BALL	1/2 x 5-3/8	6 1/2	B	68,88,90,99,100
S2848	PSC	3/4	230/460	1075	1	4.7/2.4	Open Vent.	REV	BALL	1/2 x 6	7 3/4	C	68,88,90,100,101
460 VAC MOTORS													
D980	PSC	1/4	460	1075	1	1	Totally Encl.	REV	BALL	1/2 x 6	4 1/3	D	68,88,95
D913	PSC	1/4	460	1075	1	1.1	Open Vent.	REV	BALL	1/2 x 6-3/8	4 1/4	E	68,88,95
D982	PSC	1/3	460	1075	1	1.2	Totally Encl.	REV	BALL	1/2 x 6-1/2	4 3/4	F	68,88,95
D966	PSC	1/3	460	1075	1	1.5	Open Vent.	REV	SLV	1/2 x 6-1/2	4 1/2	G	68,88,95
D912	PSC	1/3	460	1075	1	1.1	Open Vent.	REV	BALL	1/2 x 6-3/8	4 1/4	E	48,68,95
D821	PSC	1/3-1/4	460	1075	2	1.2/1	Open Vent.	REV	BALL	1/2 x 6	4 3/4	H	48,68,88,95,102
D967	PSC	1/2	460	1075	1	1.6	Open Vent.	REV	SLV	1/2 x 6	5	I	48,68,88,95
D1911	PSC	1/2	460	1075	1	1.8	Open Vent.	REV	BALL	1/2 x 6-3/8	5	J	68,88,91,95,103
D911	PSC	1/2	460	1075	1	1.8	Open Vent.	REV	BALL	1/2 x 6-3/8	5	E	68,88,91,95
D819	PSC	1/2	208-230/460	1075	1	4-2	Open Vent.	REV	BALL	1/2 x 3	7	K	48,68,88,95,102
D968	PSC	3/4	460	1075	1	2.5	Open Vent.	REV	SLV	1/2 x 6-1/2	5 1/2	G	48,68,88,95
D1910	PSC	3/4	460	1075	1	2.2	Open Vent.	REV	BALL	1/2 x 6-3/8	5 1/2	J	68,88,91,95,103
D910	PSC	3/4	460	1075	1	2.2	Open Vent.	REV	BALL	1/2 x 6-3/8	5 1/2	E	68,88,91,95
D915	PSC	3/4-1/2	460	1075	2	2.5/1.6	Open Vent.	REV	BALL	5/8 x 4-1/2	5 1/2	L	68,88,91,104,105
D914	PSC	3/4-1/2	460	1075	2	2.5/1.6	Open Vent.	REV	BALL	1/2 x 4-1/2	5 1/2	L	68,88,91,104
D823	PSC	3/4-1/2	460	1075	2	2.1/1.6	Open Vent.	REV	BALL	1/2 x 6	5 1/2	H	68,88,91,102
D1710	PSC	1	460	1075	1	3	Open Vent.	REV	BALL	1/2 x 6-1/2	6	M	68,88,91,102
D802	PSC	1/2	460	1050	1	0.9	Open Vent.	REV	BALL	1/2 x 3-1/3	5 1/2	N	68,88,90,92

NOTES: 48: 7.5M 370V Capacitor 68: Electrically Reversible 88: 60° ambient temperature rating 90: All angle mount bearings 91: 15M 370V Capacitor 92: 10M 370V Capacitor 94: Has 4 drilled and tapped holes in shell 95: All angle mount bearings. Use rain shield when necessary. 99: 7.5M 440V Capacitor 100: Comes with unmounted conduit box. 101: 20M 370V Capacitor 102: Does not have removable conduit boxes 103: Has maximum ventilation for high ambient temperatures 104: Special wiring configuration. Cannot be used with SPDT switching. 105: Keyed shaft

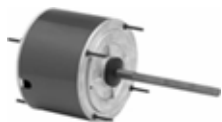


FIG. A **D5458, D5459**



FIG. B **S2846**



FIG. C **S2848**



FIG. D **D980**



FIG. E **D913, D912, D911, D910**



FIG. F **D982**



FIG. G **D966, D968**



FIG. H **D821, D823**



FIG. I **D967**



FIG. J **D1911, D1910**



FIG. K **D819**



FIG. L **D915, D914**



FIG. M **D1710**



FIG. N **D802**



FASCO MODEL	TYPE	HP	VOLTS	RPM	SPD.	AMPS	ENCLOSURE	ROT.	BRNG.	SHAFT DIM.	"A" DIM.	FIG.	NOTES
460 VAC MOTORS (cont.)													
D1914	PSC	3/4	460	1050	1	1.7	Totally Encl.	REV	BALL	1/2 x 6	6	A	68,88,90,92
D918	PSC	1/4-1/6	460	1625	2	1/6	Open Vent.	REV	BALL	1/2 x 6-1/2	4 1/4	B	68,88,95,100
D916	PSC	1/2-1/3	460	1625	2	1.6/1.1	Open Vent.	REV	BALL	1/2 x 6-1/2	5 1/2	B	48,68,88,95,100
D960	PSC	1/3	460	825	1	1.3	Open Vent.	REV	BALL	1/2 x 6	5	C	
D921	PSC	1/3	230/460	825	1	2.7/1.4	Open Vent.	REV	BALL	1/2 x 6-3/8	5 1/4	D	
D961	PSC	1/2	460	825	1	1.9	Open Vent.	REV	BALL	1/2 x 6	5 3/4	C	48
D920	PSC	1/2	460	825	1	2.1	Open Vent.	REV	SLV	1/2 x 4-1/2	5 1/2	E	91,106
200-575 VAC FAN SHELTERED MOTORS													
D2710	PSC	.4	200-230/460	1075	1	3.2/1.6	Open Vent.	REV	BALL	1/2 x 5-1/2	5 1/4	F	68,88,107
D2711	PSC	.6	200-230/460	1075	1	4.0/2.0	Open Vent.	REV	BALL	1/2 x 5-1/2	6 3/4	G	48,68,88
D2712	PSC	.6	200-230/460	1075	1	4.0/2.0	Open Vent.	REV	BALL	5/8 x 5-1/2 KEYED	6 3/4	H	48,68,88
D2713	PSC	.6	575	1075	1	1.5	Open Vent.	REV	BALL	1/2 x 5-1/2	7	F	68,88,99
D2714	PSC	.8	200-230/460	1075	1	4.6/2.3	Open Vent.	REV	BALL	1/2 x 5-1/2	8	F	68,88,101
D2715	PSC	.8	200-230/460	1075	1	4.6/2.3	Open Vent.	REV	BALL	5/8 x 5-1/2 KEYED	8	H	68,88,101
D2729	PSC	1/2	200-230/460	1075	1	4.6-2.3	Open Vent.	REV	BALL	1/2 x 3-1/2	6 1/4	G	48,68,88
3 PHASE MOTORS													
D2720	3PH	3/4	200-230	1140	1	3.0	Open Vent.	REV	BALL	5/8 x 5-7/8 KEYED	8	H	
D2721	3PH	3/4	460	1140	1	1.5	Open Vent.	REV	BALL	5/8 x 5-7/8 KEYED	8	H	
575 VAC MOTORS													
D2750	PSC	1/2	575	1625	1	1.0	Open Vent.	REV	BALL	1/2 x 6-1/2	5	I	68,88,99
D2751	PSC	1/3	575	1100	1	.75	Open Vent.	REV	BALL	1/2 x 6-1/2	5 1/4	I	68,88,99
D2752	PSC	.6	575	1075	1	1.1	Totally Encl.	REV	BALL	1/2 x 6-1/2	5 1/2	I	48,68,88
D2753	PSC	3/4	575	1075	1	1.8	Totally Encl.	REV	BALL	1/2 x 6-1/2	6	I	68,88,91

NOTES: 48: 7.5M 370V Capacitor 68: Electrically Reversible 88: 60° ambient temperature rating 90: All angle mount bearings 91: 15M 370V Capacitor 92: 10M 370V Capacitor 95: All angle mount bearings. Use rain shield when necessary. 99: 7.5M 440V Capacitor 100: Comes with unmounted conduit box. 101: 20M 370V Capacitor 106: Does not come with conduit box. 107: 5M 440V Capacitor



FIG. A D1914



FIG. B D918, D916



FIG. C D960, D961



FIG. D D921



FIG. E D920



FIG. F D2710, D2713, D2714



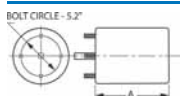
FIG. G D2711, D2729



FIG. H D2712, D2715, D2720, D2721



FIG. I D2750, D2751, D2752, D2753



Thermally protected • UL recognized • CSA or ULc certified
 NOTE: Rotation is determined by looking at shaft end. Shaft length is measured from motor face.

5.6" Diameter

Direct Drive Blower Motors



FASCO MODEL	TYPE	HP	VOLTS	RPM	SPD.	AMPS	ENCLOSURE	ROT.	BRNG.	SHAFT DIM.	"A" DIM.	FIG.	NOTES
OPEN CONSTRUCTION													
D928	PSC	1/6-1/8-1/10	115	1075	3	2.7-2.1-1.7	Open Vent.	REV	SLV	1/2 x 5-1/4	3 3/4	A	68,90,108
D721	PSC	1/4-1/5-1/6	115	1075	3	4.8-3.3-2.6	Open Vent.	REV	SLV	1/2 x 6	4	A	68,90,108
D727	PSC	1/3-1/4-1/5	115	1075	3	5.9-4.6-3.8	Open Vent.	REV	SLV	1/2 x 6	4 1/4	A	68,90,108
D701	PSC	1/2-1/3-1/4-1/5	115	1075	4	7.7-5.5-4.2-3.3	Open Vent.	REV	SLV	1/2 x 5-1/2	5 1/4	A	68,90,92,108
D726	PSC	3/4-1/3	115	1075	2	11-5	Open Vent.	REV	SLV	5/8 x 4-1/2 KEYED	5 1/4	B	68,90,91,108
D728	PSC	3/4-1/2-1/3	115	1075	3	10.5-6.9-4.8	Open Vent.	REV	SLV	1/2 x 6	5 1/2	A	68,90,92,108
D724	PSC	3/4-1/2-1/3-1/4	115	1075	4	9.5-7.2-5.6-3.5	Open Vent.	REV	SLV	1/2 x 6	5 3/4	C	68,90,91,108,109
D712	PSC	1-1/2-1/3	115	1075	3	11.8-6.3-3.9	Open Vent.	REV	SLV	1/2 x 6	6	A	68,90,101,108
D902	PSC	1/2-1/3-1/4-1/5	115	1075	4	9.9-5.6-3.7-2.7	Open Vent.	REV	SLV	1/2 x 5-1/2	5 1/4	A	68,90,92,108
D1730	PSC	1/4-1/5-1/6	115	1075	3	4.8-3.3-2.6	Open Vent.	REV	SLV	1/2 x 6	4	D	
D1731	PSC	1/3-1/4-1/5	115	1075	3	5.9-4.6-3.8	Open Vent.	REV	SLV	1/2 x 6	4 1/4	D	
D1732	PSC	1/2-1/3-1/4	115	1075	3	7.7-5.5-4.2	Open Vent.	REV	SLV	1/2 x 6	4 3/4	D	92
D1733	PSC	1/4-1/5-1/6	208-230	1075	3	2.2-1.6-1.2	Open Vent.	REV	SLV	1/2 x 6	4	D	
D1734	PSC	1/3-1/4-1/5	208-230	1075	3	2.8-2.2-1.8	Open Vent.	REV	SLV	1/2 x 6	4 1/4	D	
D1735	PSC	1/2-1/3-1/4	208-230	1075	3	3.4-2.5-1.9	Open Vent.	REV	SLV	1/2 x 6	4 3/4	D	
D2700	PSC	1/2-1/3-1/4	115	1075	3	7.7/5.5/4.2	Open Vent.	REV	BALL	1/2 x 5-1/2	5 1/3	A	92
D2701	PSC	1/2-1/3-1/4	208/230	1075	3	4.0/2.7/2.0	Open Vent.	REV	BALL	1/2 x 6-1/4	5 1/8	E	48
D2702	PSC	3/4-1/2-1/3	115	1075	3	10.5/5.6/4.8	Open Vent.	REV	BALL	1/2 x 6-1/4	5 1/2	A	92
D2703	PSC	3/4-1/2-1/3	208/230	1075	3	5.4/3.8/2.9	Open Vent.	REV	BALL	1/2 x 6-1/4	5 1/2	E	92
D2704	PSC	1-1/2-1/3	208/230	1075	3	5.3/2.8/1.8	Open Vent.	REV	BALL	1/2 x 6-1/4	5 1/2	F	101
D2705	PSC	1-1/2-1/3	115	1075	3	11.6/6.3/3.9	Open Vent.	REV	BALL	1/2 x 6-1/4	6	A	101
D927	PSC	1/6-1/8-1/10	208-230	1075	3	1.4-.9-.5	Open Vent.	REV	SLV	1/2 x 6	3 3/4	E	68,95
D725	PSC	1/4-1/6-1/8	208-230	1075	3	2.2-1.5-1.1	Open Vent.	REV	SLV	1/2 x 6	4	E	68,95
D723	PSC	1/3-1/4-1/6	208-230	1075	3	3.3-2.3-1.8	Open Vent.	REV	SLV	1/2 x 6	4 1/2	E	68,95
D923	PSC	1/3-1/4-1/5	208-230	1075	3	2.9-2.2-1.7	Open Vent.	REV	SLV	1/2 x 6	4 1/4	E	68,95
D703	PSC	1/2-1/3-1/4	208-230	1075	3	4-2.7-2	Open Vent.	REV	SLV	1/2 x 6	5	E	48,68,95
D730	PSC	3/4-1/2	208-230	1075	2	4.8-3.5	Open Vent.	REV	BALL	1/2 x 6	5 1/2	E	68,92,95
D729	PSC	3/4-1/2-1/3	208-230	1075	3	5.4-3.8-2.9	Open Vent.	REV	SLV	1/2 x 6	5 1/2	E	68,92,95
D711	PSC	1-1/2-1/3	208-230	1075	3	5.3-2.8-1.8	Open Vent.	REV	SLV	1/2 x 6	5 1/2	F	68,95,101

NOTES: 48: 7.5M 370V Capacitor 68: Electrically Reversible 90: All angle mount bearings 91: 15M 370V Capacitor 92: 10M 370V Capacitor 95: All angle mount bearings. Use rain shield when necessary. 101: 20M 370V Capacitor 108: Ideal for blowers and fans used in furnaces and air-conditioners 109: Includes 8 drilled and tapped holes in shell



FIG. A D928, D721, D727, D701, D728, D712, D902, D2700, D2702, D2705



FIG. B D726



FIG. C D724



FIG. D D1730, D1731, D1732, D1733, D1734, D1735



FIG. E D2701, D2703, D927, D725, D723, D923, D703, D730, D729



FIG. F D2704, D711



FASCO MODEL	TYPE	HP	VOLTS	RPM	SPD.	AMPS	ENCLOSURE	ROT.	BRNG.	SHAFT DIM.	"A" DIM.	FIG.	NOTES
D975	PSC	1/6-1/10-1/12	277	1075	3	.9-.4-.3	Open Vent.	REV	SLV	1/2 x 5-1/2	4	A	68,95,108
D979	PSC	1/6-1/8-1/10	277	1075	3	.9-.7-.6	Open Vent.	DS	SLV	7-7/8 x 1/2 x 8-1/4	3 3/4	B	68,95,108
D973	PSC	1/4-1/6-1/8	277	1075	3	2-1.4-1	Open Vent.	REV	SLV	1/2 x 5-1/2	4	A	68,95,108
D972	PSC	1/3-1/4-1/5	277	1075	3	2.4-1.5-1	Open Vent.	REV	SLV	1/2 x 5-1/2	4 1/4	A	68,95,108
D971	PSC	1/2-1/3-1/4	277	1075	3	3.2-2.2-1.8	Open Vent.	REV	SLV	1/2 x 5-1/2	4 3/4	A	90,92,108
D976	PSC	1/2-1/3-1/4	277	1075	3	3.4-2.2-1.6	Open Vent.	DS	SLV	7-3/8 x 1/2 x 7-1/4	5 1/4	B	90,92,108
D974	PSC	1/2-1/3-1/4	277	825	3	2.3-1.6-1.3	Open Vent.	REV	SLV	1/2 x 5	5 1/3	C	90,91,108
D970	PSC	3/4-1/2-1/3	277	1075	3	3.9-2.2-1.6	Open Vent.	REV	SLV	1/2 x 5-1/2	5 1/4	A	90,101,108
D1703	PSC	1/4-1/6-1/8	115	1075	3	4.1-3.0-2.3	Totally Encl.	DS	SLV	8 x 1/2 x 8	4 1/4	D	
D1704	PSC	1/3-1/4-1/6	115	1075	3	4.9-3.1-2.2	Totally Encl.	DS	SLV	8 x 1/2 x 8	4 3/4	D	68
D1705	PSC	1/2-1/3-1/4	115	1075	3	8.7-6.2-4.9	Totally Encl.	DS	SLV	8 x 1/2 x 8	5 3/4	D	68
D1706	PSC	1/4-1/6-1/8	208-230	1075	3	1.7-1.3-1.0	Totally Encl.	DS	SLV	8 x 1/2 x 8	4 1/4	D	68
D1707	PSC	1/3-1/4-1/6	230	1075	3	2.3-1.5-1.1	Totally Encl.	DS	SLV	8 x 1/2 x 8	4 3/4	D	68
D1708	PSC	1/2-1/3-1/4	230	1075	3	4.1-3.0-2.3	Totally Encl.	DS	SLV	8 x 1/2 x 8	5 3/4	D	68
D736	PSC	1/6	115	1625	1	2	Totally Encl.	REV	BALL	1/2 x 3-1/4	4 1/4	E	68,90,110,111
D834	PSC	1/6	115	1075	1	2.7	Totally Encl.	CW	BALL	1/2 x 3	4 1/4	F	68,90,110,111
D733	PSC	1/6-1/8	115	1075	2	2.5-1.8	Totally Encl.	REV	BALL	1/2 x 4-1/2	4 1/4	G	68,90,111
D734	PSC	1/4	115	1075	1	3.8	Totally Encl.	REV	BALL	1/2 x 3-1/4	4 1/4	E	48,90,110,111
D732	PSC	1/3	115	1075	1	4.1	Totally Encl.	REV	BALL	1/5 x 5	4 3/4	F	68,90,110,111
D817	PSC	1/2	115	1140	1	5.5	Totally Encl.	CW	BALL	1/2 x 6	4 1/2	E	90,110,111

NOTES: 48: 7.5M 370V Capacitor 68: Electrically Reversible 90: All angle mount bearings 91: 15M 370V Capacitor 92: 10M 370V Capacitor 95: All angle mount bearings. Use rain shield when necessary. 101: 20M 370V Capacitor 108: Ideal for blowers and fans used in furnaces and air-conditioners 110: Capacitor and base are included 111: Ideal for unit heaters



FIG. A D975, D973, D972, D971, D970



FIG. B D979, D976



FIG. C D974



FIG. D D1703, D1704, D1705, D1706, D1707, D1708



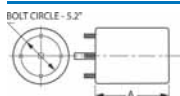
FIG. E D736, D734, D817



FIG. F D834, D732



FIG. G D733



Thermally protected • UL recognized • CSA or ULc certified
 NOTE: Rotation is determined by looking at shaft end. Shaft length is measured from motor face.



FASCO MODEL	TYPE	HP	VOLTS	RPM	SPD.	AMPS	ENCLOSURE	ROT.	BRNG.	SHAFT DIM.	"A" DIM.	FIG.	NOTES
D782	PSC	1/4	115	1625	1	3.5	Open Vent.	REV	SLV	1/2 x 6	4 1/4	A	112
D783	PSC	1/4	208-230	1625	1	1.5	Open Vent.	REV	SLV	1/2 x 6	4	B	112
D780	PSC	1/3-1/4-1/6	115	1625	3	4.7-3.5-2.7	Open Vent.	REV	SLV	1/2 x 6	4 1/2	A	112
D787	PSC	1/3	208-230	1625	1	2.3	Open Vent.	REV	SLV	1/2 x 7	4 1/4	B	112
D781	PSC	1/3-1/4-1/6	208-230	1625	3	2-1.6-1.2	Open Vent.	REV	SLV	1/2 x 7	4 1/2	B	112
D785	PSC	1/2-1/3-1/4	115	1625	3	8.4-6.4-5	Open Vent.	REV	SLV	1/2 x 6	4 3/4	A	112
D788	PSC	1/2	208-230	1625	1	3.9	Open Vent.	REV	SLV	1/2 x 6	5	B	112
D784	PSC	1/2-1/3-1/4	208-230	1625	3	3.8-2.8-2.1	Open Vent.	REV	SLV	1/2 x 6	5	B	112
D789	PSC	3/4	208-230	1625	1	5.2	Open Vent.	REV	SLV	1/2 x 6	5 1/4	C	48,112
D786	PSC	3/4-1/2-1/3	230	1625	3	5.3-3.8-2.9	Open Vent.	REV	SLV	1/2 x 6	5 1/4	C	48,112
D776	PSC	1/5-1/8-1/10	115	1625	3	2.8-2-1.6	Open Vent.	DS	SLV	8-1/2 x 1/2 x 8-1/2	3 1/2	D	113,114
D775	PSC	1/5-1/6-1/8	208-230	1625	3	1.1-.8-.7	Open Vent.	DS	SLV	8-1/2 x 1/2 x 8-1/2	3 1/2	D	113,114
D773	PSC	1/4-1/5-1/6	115	1625	3	3.8-2.8-2.1	Open Vent.	DS	SLV	8-1/2 x 1/2 x 8-1/2	4	D	113,114
D774	PSC	1/4-1/5-1/6	208-230	1625	3	1.9-1.2-.9	Open Vent.	DS	SLV	8-1/2 x 1/2 x 8-1/2	4	D	113,114
D770	PSC	1/3-1/4-1/6	115	1625	3	5.9-4.4-3.5	Open Vent.	DS	SLV	8-3/4 x 1/2 x 8-3/4	4 1/2	D	113,114
D771	PSC	1/3-1/4-1/6	208-230	1625	3	2.4-1.8-1.4	Open Vent.	DS	SLV	8-3/4 x 1/2 x 8-3/4	4 1/2	D	113,114
D777	PSC	1/2-1/3-1/4	115	1625	3	9.4-6-4.5	Open Vent.	DS	SLV	7-1/2 x 1/2 x 7-1/2	5	D	113,114
D772	PSC	1/2-1/3-1/4	208-230	1625	3	3.8-2.8-2.1	Open Vent.	DS	SLV	8 x 1/2 x 8	4 3/4	D	113,114
D778	PSC	3/4-1/2-1/3	208-230	1625	3	5.3-3.8-3.2	Open Vent.	DS	SLV	7-1/2 x 1/2 x 7	5 1/4	E	113,114

NOTES: 48: 7.5M 370V Capacitor 112: Should not be used for replacements where original motor is rated below 1500 RPM 113: Ideal versatility using Kit 200 "X" brackets to accommodate various cradle base lengths 114: Ideal for lug mounting using lug Kit 55L or 55S



FIG. A D782, D780, D785



FIG. B D783, D787, D781, D788, D784



FIG. C D789, D786

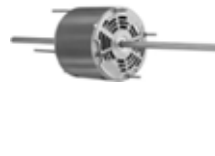


FIG. D D776, D775, D773, D774, D770, D771, D777, D772



FIG. E D778



FASCO MODEL	TYPE	HP	VOLTS	RPM	SPD.	AMPS	ENCLOSURE	ROT.	BRNG.	SHAFT DIM.	"A" DIM.	FIG.	NOTES
D751	PSC	1/8-1/10-1/15	115	1075	3	2.3-1.5-1.1	Open Vent.	DS	SLV	7-1/2 x 1/2 x 9	3 1/2	A	113,114,115,116
D750	PSC	1/8-1/10-1/12	208-230	1075	3	.9-.6-.5	Open Vent.	DS	SLV	7-1/2 x 1/2 x 9	3 3/4	A	113,114,115,116
D754	PSC	1/6-1/8-1/10	115	1075	3	2.7-2.1-1.7	Open Vent.	DS	SLV	7-1/2 x 1/2 x 9	3 1/2	A	113,114,115,116
D752	PSC	1/6-1/8-1/10	208-230	1075	3	1.4-.9-.5	Open Vent.	DS	SLV	7-1/2 x 1/2 x 9	3 1/2	A	113,114,115,116
D756	PSC	1/4-1/6-1/8	115	1075	3	3.9-2.4-2.1	Open Vent.	DS	SLV	10 x 1/2 x 10	4	A	113,114,115,116
D755	PSC	1/4-1/6-1/8	208-230	1075	3	2-1.4-1.2	Open Vent.	DS	SLV	7-1/2 x 1/2 x 8-1/2	4	A	113,114,115,116
D757	PSC	1/3-1/4-1/6	115	1075	3	6.9-4.8-3.8	Open Vent.	DS	SLV	8-1/2 x 1/2 x 8-1/2	4 1/4	A	113,114,115,116
D758	PSC	1/3-1/4-1/6	208-230	1075	3	2.3-1.7-1.1	Open Vent.	DS	SLV	8-1/2 x 1/2 x 8-1/2	4 1/2	A	113,114,115,116
D761	PSC	1/2-1/3-1/4	115	1075	3	9.6-6-4.4	Open Vent.	DS	SLV	8 x 1/2 x 8	5 1/4	A	113,114,115,116
D760	PSC	1/2-1/3-1/4	208-230	1075	3	4.3-3.1-2.3	Open Vent.	DS	SLV	8 x 1/2 x 8	5 1/4	A	113,114,115,116
D769	PSC	3/4-1/2-1/3	115	1075	3	11.9-8.1-6	Open Vent.	DS	SLV	8 x 1/2 x 8	5 1/2	A	92,113,114,115,116
D763	PSC	3/4-1/2-1/3	208-230	1075	3	5.7-4.1-3.1	Open Vent.	DS	SLV	8 x 1/2 x 8	5 1/2	A	92,113,114,115,116
D766	PSC	1/4-1/6-1/8	230	1075	3	1.9-1.2-.8	Totally Encl.	DS	SLV	7-1/2 x 1/2 x 8-1/2	4	B	68,113,114,115,116

NOTES: 68: Electrically Reversible 92: 10M 370V Capacitor 113: Ideal versatility using Kit 200 "X" brackets to accommodate various cradle base lengths 114: Ideal for lug mounting using lug Kit 55L or 55S 115: All angle mount sleeve bearings 116: Hubless endshields for flush mounting

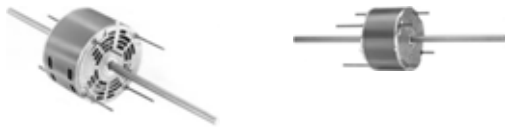
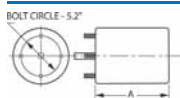


FIG. A D751, D750, D754, D752, D756, D755, D757, D758, D761, D760, D769, D763

FIG. B D766



Thermally protected • UL recognized • CSA or ULc certified
 NOTE: Rotation is determined by looking at shaft end. Shaft length is measured from motor face.



FASCO MODEL	TYPE	HP	VOLTS	RPM	SPD.	AMPS	ENCLOSURE	ROT.	BRNG.	SHAFT DIM.	"A" DIM.	FIG.	NOTES
D3775	PSC	1/6-1/8-1/10	230	1350	3	.8-.6-.5	Totally Encl.	DS	SLV	7-3/4 x 1/2 x 7-3/4	3.5/89	A	95
D3774	PSC	1/4-1/5-1/6	230	1350	3	1.5-1.1-.8	Totally Encl.	DS	SLV	7-1/2 x 1/2 x 7-1/2	4.0/102	A	95,117
D3771	PSC	1/3-1/4-1/5	230	1350	3	2.1-1.5-1.1	Open Vent.	DS	SLV	7-1/4 x 1/2 x 7-1/4	4.5/114	B	95
D3772	PSC	1/2-1/3-1/4	230	1350	3	3-1.9-1.3	Open Vent.	DS	SLV	7 x 1/2 x 7	4.8/122	B	92,95
D3752	PSC	1/6-1/8-1/10	230	900	3	1.2-.8-.6	Totally Encl.	DS	SLV	7-1/2 x 1/2 x 7-1/2	4.0/102	A	95
D3755	PSC	1/4-1/5-1/6	230	900	3	2-1.4-1	Totally Encl.	DS	SLV	7-1/4 x 1/2 x 7-1/4	4.5/114	A	95,117
D3758	PSC	1/3-1/4-1/5	230	900	3	2.6-1.7-1.3	Open Vent.	DS	SLV	7 x 1/2 x 6-3/4	5.3/135	B	95
D3760	PSC	1/2-1/3-1/4	230	900	3	4.2-2.2-1.5	Open Vent.	DS	SLV	7 x 1/2 x 7	5.5/140	B	92,95

NOTES: 92: 10M 370V Capacitor 95: All angle mount bearings. Use rain shield when necessary. 117: Includes dust seal



FIG. A D3775, D3774,
D3752, D3755

FIG. B D3771, D3772,
D3758, D3760



FASCO MODEL	TYPE	HP	VOLTS	RPM	SPD.	AMPS	ENCLOSURE	ROT.	BRNG.	SHAFT DIM.	"A" DIM.	FIG.	NOTES
D824	PSC	1/4-1/8	115	1100	2	3.2-2.4	Totally Encl.	REV	BALL	1/2 x 3-1/2	5 3/4	A	20,118,119
D901	PSC	1/3-1/8	115	1100	2	4-3.5	Totally Encl.	REV	BALL	1/2 x 3-1/2	6	A	118,119
D997	PSC	1/2-1/4	115	1100	2	7.1-4	Totally Encl.	REV	SLV	1/2 x 3	7 1/3	A	118,119,120
D999	PSC	1/2-1/4	115	1100	2	7.1-4	Totally Encl.	REV	SLV	5/8 x 3	7 1/3	A	118,119,120
D900	PSC	1/2-1/4	115	1100	2	7.1-4	Totally Encl.	REV	SLV	5/8 x 3	7 1/4	B	120
D998	PSC	1/2	115/230	825	1	6-3	Totally Encl.	CW	BALL	5/8 x 2-5/8	7 1/2	C	105,121,122,123
V44-36	SP	1/12	115/230	36	1	1.85-1.0	Totally Encl.	CCW		3/4 x 2-3/16	8 7/8	D	124,125

NOTES: 20: 4M 370V Capacitor included 105: Keyed shaft 118: Includes pull-chain switch 119: Has 10' cord set 120: 12.5M 370V Capacitor included 121: No pedestal yoke mount 122: Poultry and Hog House fan motor 123: Agricultural applications 124: Bulk milk agitator gearmotor 125: 120 in/lbs.



FIG. A D824, D901, D997, D999



FIG. B D900



FIG. C D998



FIG. D V44-36

Thermally protected • UL recognized • CSA or ULc certified
 NOTE: Rotation is determined by looking at shaft end. Shaft length is measured from motor face.