

REV.	BY	ECN NUMBER	DATE
NEW	DMW	422AH	5/10/06
A	SJH	2165AJ	02/28/08

DWG BY: E. REITZ	PCN # R 42350	REV. A
DATE: 5/10/06		
SHEET 1 / 1	APPD BY:	

PURCHASE PART SPECIFICATIONS

COMPONENT: VALVE GAS .75 X .75 1STG NG



SPECIFICATIONS

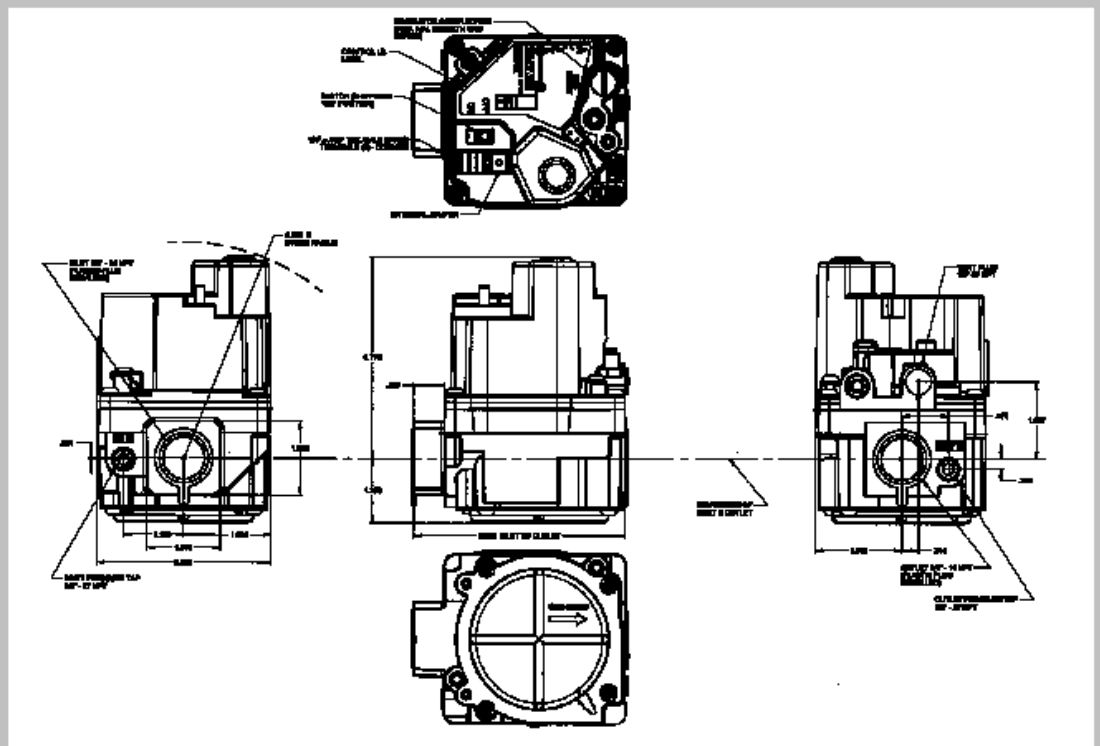
MFG P/N: 36H22-401

CURRENT REQUIREMENTS

VALVE (STAGES)	VOLTAGE FREQUENCY	TOTAL CURRENT
SINGLE	24V. 50/60 HZ	.410A

Standard Features

- Inlet screen
- Outlet screen
- Ambient temperature for - 40° F to 175° F
- Mounting Limited Horizontal
- Quiet redundant
- Electrical shut-off
- Outlet pressure tap (1/8" N.P.T.)
- Inlet pressure tap (1/8" N.P.T.)
- Quick-connect terminals (1/4")
- Adjustable regulator(s)
- Maximum pressure (1/2 PSI)
- CSA approved



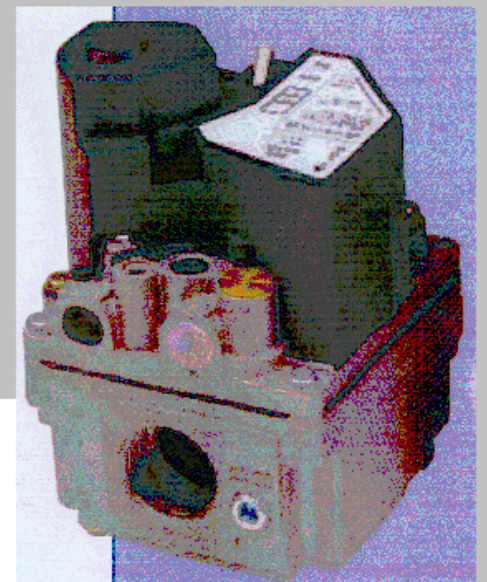
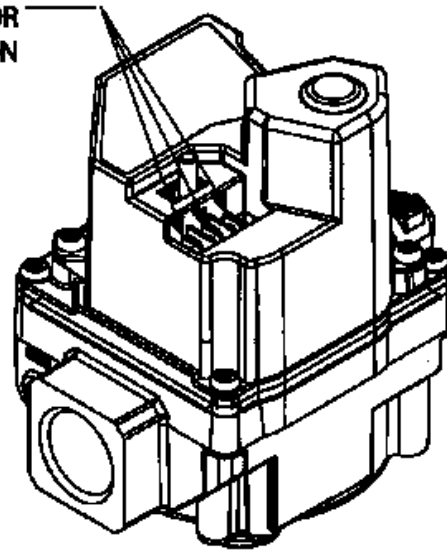
RANGE OF REGULATION

VALVE (STAGES)	PIPE SIZES	CSA STD GAS .64 SP.GR. (1000 BTU/CU. FT.)	LP GAS 1.53 SP.GR. (2500 BTU/CU. FT.)	ADJUSTMENT RANGE (NAT., IN. W.C.)	ADJUSTMENT RANGE (L.P., IN. W.C.)
SINGLE	3/4" X 3/4" NPT	50,000 — 400,000 BTU/HR	81,000 — 648,000 BTU/HR	2.5 — 5.0	5.0 — 12.0

Optional Features

- Ground terminal
- Natural / LP field conversion kit
- Vent Tap (1/8" N.P.T.)

(3) 1/4" MALE QUICK CONNECT TERMINALS FOR POWER CONNECTION



DIMENSIONS ARE FOR REFERENCE ONLY UNLESS OTHERWISE NOTED

APPROVED VENDOR (1) WHITE RODGERS APPROVED VENDOR (4) _____
 APPROVED VENDOR (2) _____ APPROVED VENDOR (5) _____
 APPROVED VENDOR (3) _____ APPROVED VENDOR (6) _____

UL/CSA FILE _____
 (1) UL A (2) UL _____ (3) UL _____ (4) UL _____ (5) UL _____ (6) UL _____
 CSA165039-1636373 CSA _____ CSA _____ CSA _____ CSA _____ CSA _____

VENDOR: AAON PART NUMBER TO BE ON CARTON OR PART ITSELF.