

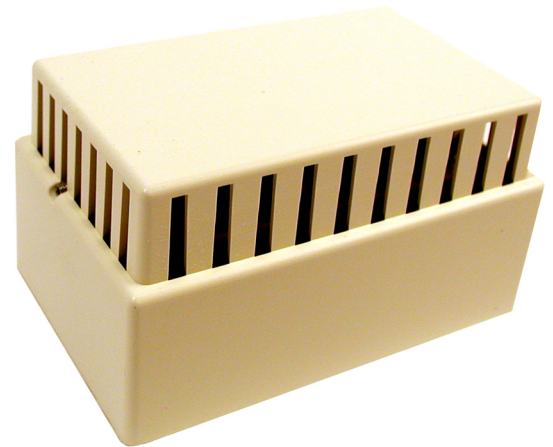
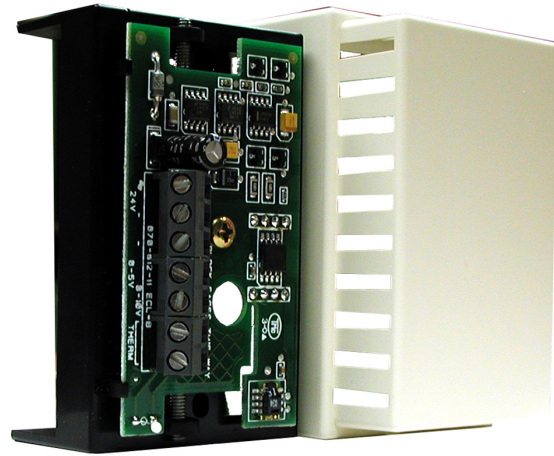
## Application and Description

The THE-1105 humidity transmitter may be used in vertical or horizontal installations in building management systems requiring accurate monitoring of humidity and temperature. It transmits separate relative humidity (RH) and temperature signals for use in temperature, humidity, or enthalpy-based control applications. Environmentally rugged, it is especially suited for hospitals, laboratories, and swimming pool areas.

This transmitter now uses a state-of-the-art silicon CMOS chip sensor. This provides much more durable and reliable performance than the older capacitive polymer sensor. Plus, it responds within seconds to changes in humidity with a very high degree of accuracy.

The THE-1105 has two user-selectable output ranges: 0 to 5 or 0 to 10 VDC, scaled over 0 to 100% RH range.

The THE-1105 also contains a thermistor for measuring room temperature. The 10,000 ohm (@ 77° F) thermistor provides precise, stable temperature sensing.



## Accessories

The following accessories are available:

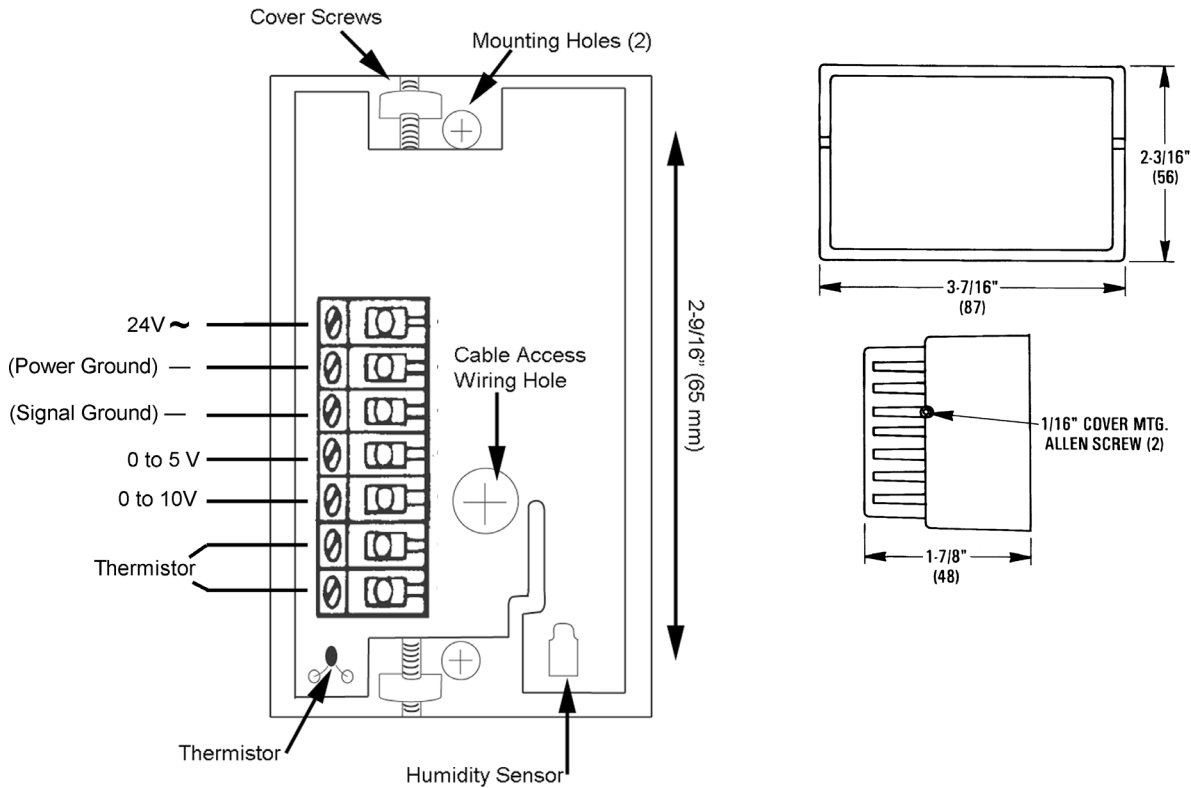
HMO-5023	Drywall mounting kit
HMO-5024	2 x 4 inch almond horizontal backplate with alum. trim
HMO-5026	2 x 4 inch white horizontal backplate with alum. trim
HMO-5030	2 x 4 inch almond vertical backplate with alum. trim
HMO-5031	2 x 4 inch white vertical backplate with alum. trim
HPO-1501	Light almond, ABS cover
HPO-1502	White, ABS cover
HPO-1503	Brushed aluminum, metal cover

## Features

- ◆ CMOS chip humidity sensor provides excellent linearity, sensitivity, and reliability
- ◆ Type II 10,000 ohm thermistor for temperature sensing
- ◆ Transmits separate temperature and humidity signals
- ◆ User-selectable output ranges
- ◆ Light almond (standard) cover

## Details

All dimension are in inches (mm).



## Specifications

<b>Supply Voltage</b>	24 VAC $-15\%$ , $+20\%$ ; 28 to 40 VDC
<b>Supply Power</b>	0.84 VA at 24 VAC 12.5 mA at 28 VDC
<b>Humidity Element</b>	
• Output Range	0 to 100% RH
• Sensing Accuracy	@ 25° C $\pm 2\%$ RH over the 10% to 90% RH range
<b>Output Signal over 0 to 100% RH</b>	0 to 5 VDC or 0 to 10 VDC
<b>Output Capacity</b>	0 to 5 or 0 to 10 VDC capable of driving 1000 ohm or greater

### Temperature Sensor

• Type	Type II thermistor
• Accuracy	$\pm 0.36^\circ\text{F}$ ( $\pm 0.20^\circ\text{C}$ )
• Resistance	10,000 ohm @ 77° F (25° C)
• NTC	4.37%/° C @ 25° C
• Dissipation Constant	2 mW/° C

**Wire Size** 18 to 22 AWG with a 250-foot length, maximum.

### Material

• Base	Black ABS
• Cover	Light Almond ABS UL Flame Class 94 HB

### Weight

3.0 oz. (85 grams)

### Temperature Limits

• Operating	40° to 120° F (4° to 49° C)
• Shipping	-40° to 140° F (-40° to 60° C)
• Humidity	0 to 100% relative humidity, non-condensing

### KMC Controls, Inc.

19476 Industrial Drive  
New Paris, IN 46553  
574.831.5250

www.kmcccontrols.com  
info@kmcccontrols.com