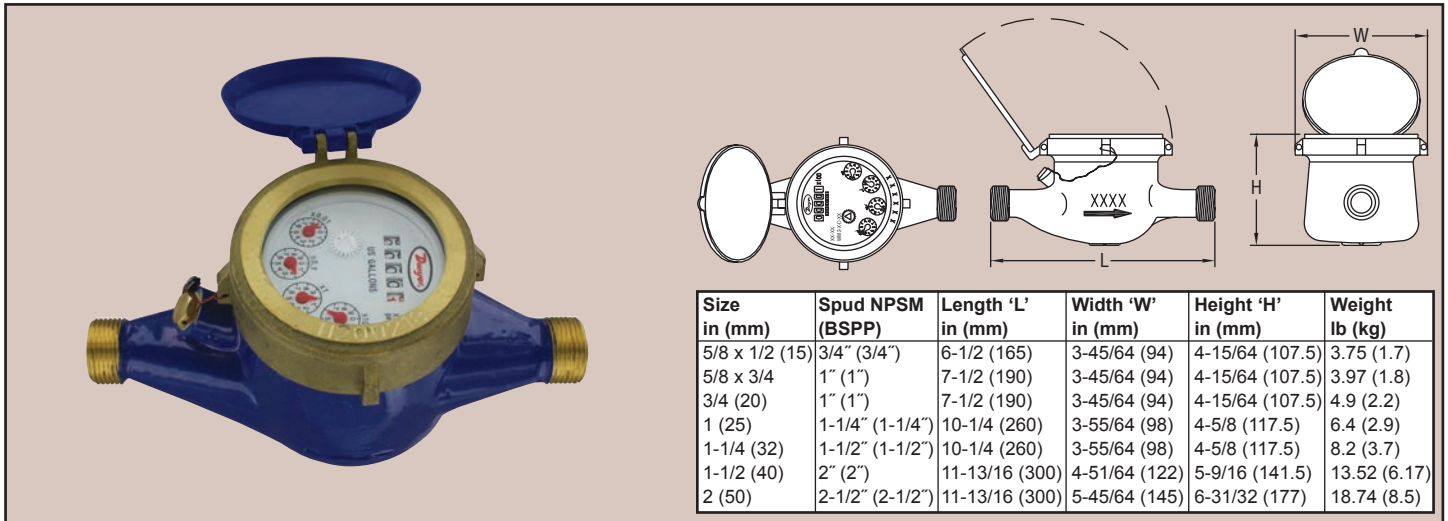




Series
WM2

Multi-Jet Water Meter

Economical, Brass Body, Dry Dial



Size in (mm)	Spud NPSM (BSPP)	Length 'L' in (mm)	Width 'W' in (mm)	Height 'H' in (mm)	Weight lb (kg)
5/8 x 1/2 (15)	3/4" (3/4")	6-1/2 (165)	3-45/64 (94)	4-15/64 (107.5)	3.75 (1.7)
5/8 x 3/4	1" (1")	7-1/2 (190)	3-45/64 (94)	4-15/64 (107.5)	3.97 (1.8)
3/4 (20)	1" (1")	7-1/2 (190)	3-45/64 (94)	4-15/64 (107.5)	4.9 (2.2)
1 (25)	1-1/4" (1-1/4")	10-1/4 (260)	3-55/64 (98)	4-5/8 (117.5)	6.4 (2.9)
1-1/4 (32)	1-1/2" (1-1/2")	10-1/4 (260)	3-55/64 (98)	4-5/8 (117.5)	8.2 (3.7)
1-1/2 (40)	2" (2")	11-13/16 (300)	4-51/64 (122)	5-9/16 (141.5)	13.52 (6.17)
2 (50)	2-1/2" (2-1/2")	11-13/16 (300)	5-45/64 (145)	6-31/32 (177)	18.74 (8.5)

The Series WM2 Multi-Jet Water Meter is ideal for commercial and industrial applications. The multi-jet design allows for simplicity and accuracy with wide flow ranges, even in low flow applications. The magnetically driven, hermetically sealed register will not leak or fog and is completely separated from the water. These water meters are designed for long service life and maintenance-free operation, even under harsh conditions.

FEATURES

- Magnetic drive – water is sealed from entering register
- Dry dial won't discolor or fade – hermetically sealed from the elements
- Integral strainer that protects meters from particulate damage
- Pointer-roller indicator
- Frost resistant body
- Includes two mounting adapters (couplings)

SPECIFICATIONS

- Service:** Water.
- Wetted Materials:**
 - Body: Brass, polyethylene;
 - Couplings: Brass;
 - Measuring Chamber: Polyethylene, ABS plastic, ferrite, acetal.
- Flow Range:** See model chart.
- Accuracy:** Transitional Flow: ±5%; Nominal Flow: ±2%.
- Temperature Limit:** 104°F (40°C).
- Pressure Limit:** 232 psi (16 bar).
- Pressure Drop:** See service manual.
- Totalizing Display Maximum:** See model chart.
- Mounting Orientation:** Horizontal.
- Weight:** See dimension chart.

Model	Size	Coupling Size	Max Flow GPM (Gallons Per Minute)	Nominal Flow Range	Transitional Flow	Display Max (Gallons)
WM2-A-C-01	5/8 x 1/2"	1/2" NPT	20	1 to 10	0.25	9,999,999.99
WM2-A-C-02	5/8 x 3/4"	3/4" NPT	20	1 to 20	0.25	9,999,999.99
WM2-A-C-03	3/4"	3/4" NPT	30	2 to 30	0.25	99,999,999.9
WM2-A-C-04	1"	1" NPT	50	3 to 50	0.75	99,999,999.9
WM2-A-C-06	1-1/2"	1-1/2" NPT	100	5 to 100	1.5	99,999,999.9
WM2-A-C-07	2"	2" NPT	160	80 to 160	2	99,999,999.9

Model	Size	Coupling Size	Max Flow m³/h	Nominal Flow Range	Transitional Flow	Display Max (m³)
WM2-B-C-08	15 mm	1/2" BSPT	3	0.12 to 1.5	0.03	99,999.9999
WM2-B-C-10	20 mm	3/4" BSPT	5	0.2 to 2.5	0.03	99,999.9999
WM2-B-C-11	25 mm	1" BSPT	7	0.25 to 3.5	0.07	99,999.9999
WM2-B-C-12	32 mm	1-1/4" BSPT	12	0.48 to 6	0.12	99,999.9999
WM2-B-C-13	40 mm	1-1/2" BSPT	20	0.8 to 10	0.2	999,999.9999
WM2-B-C-14	50 mm	2" BSPT	30	1.2 to 15	0.12	999,999.9999

FLOW

Watermeters