

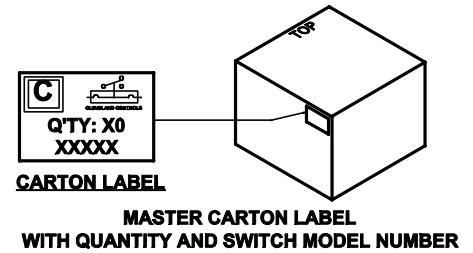
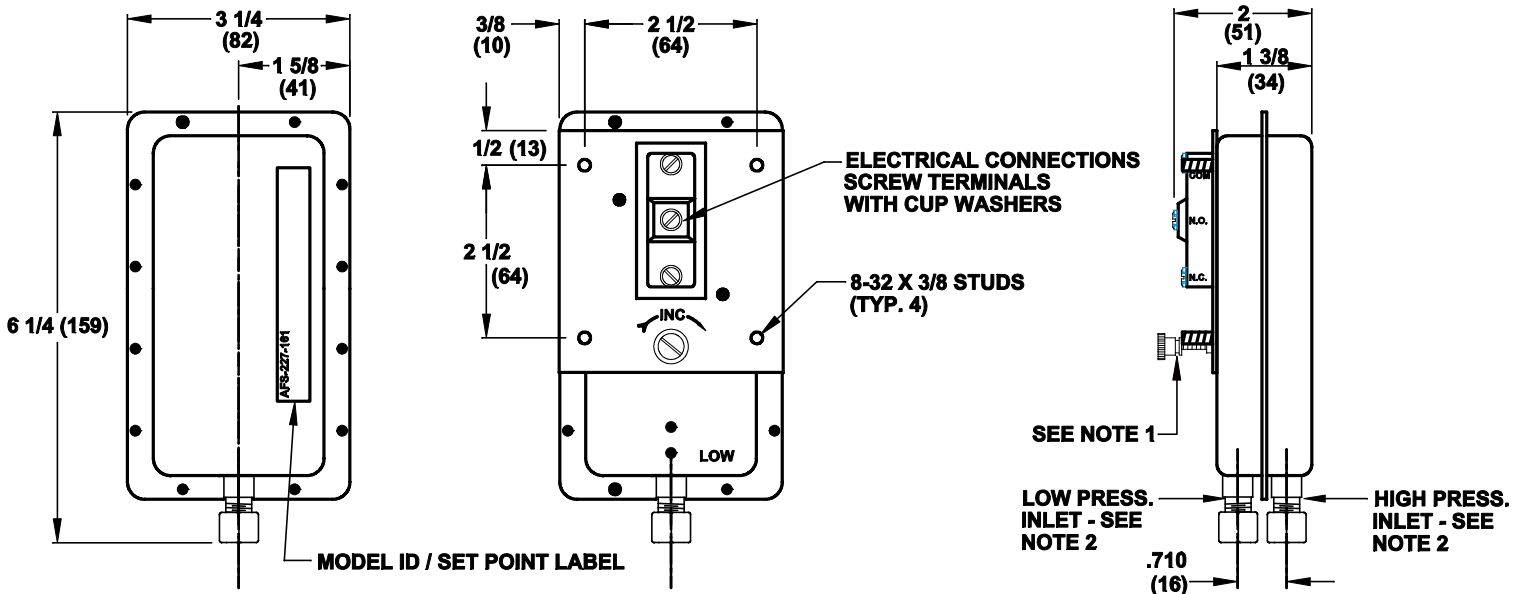
SPECIFICATIONS

- 1.0 Mounting Position: Diaphragm Vertical (See Diag. Below).
- 2.0 Set Point Range: 0.05 ± 0.02" W.C. to 12.0" W.C. Pressure Rise.
- 3.0 Measured Media: Air.
- 4.0 Operating Temperature Range: -40° to 180°F (-40.0° to 82.2 °C).
- 5.0 Life: 100,000 Cycles Minimum at 1/2 PSI Maximum Pressure Each Cycle and at Maximum Rated Electrical Load.
- 6.0 Electrical Rating.
 - 6.1 300VA Pilot Duty at 115 to 277VAC.
 - 6.2 15A Non-inductive to 277VAC. } 60 Hz.
- 7.0 Contact Arrangement: SPDT.
- 8.0 Position of Switch Contacts Before Pressure is Applied.



- NOTE 1** Adjustment Screw - Turn Clockwise To Increase Set Point.
- NOTE 2** Sample Line Connector, Complete With Nut and Ferrule, Will Accept 1/4"OD Tubing i.e. Copper, Aluminum or Plastic.
- NOTE 3** Approval or Recognition By: UL File MH6213; CSA File LR18754; Factory Mutual Systems; CE.

**DIMENSIONS
INCHES
(METRIC)**



CLEVELAND CONTROLS DIV. OF UNICONTROL INC. MAKES NO REPRESENTATION OR WARRANTY CONCERNING THE SUITABILITY OF THIS DEVICE FOR A SPECIFIC APPLICATION OR PRODUCT. IT IS THE RESPONSIBILITY OF THE USER TO VERIFY THE SUITABILITY OF THIS DEVICE FOR THE SPECIFIC APPLICATION. WHERE AN OPERATING CONTROL FAILURE WOULD RESULT IN PERSONAL INJURY AND/OR LOSS OF PROPERTY, IT IS THE RESPONSIBILITY OF THE USER TO ADD DEVICES OR SYSTEMS THAT PROTECT AGAINST, OR WARN OF, FAILURE OF THIS DEVICE.				
SENSING SWITCH SPECIFICATIONS WEBSTER ENGINEERING				
C	5641	5/11/12	MJA	FL
B	3876-1	8/21/07	MJA	FL
A	3876	11/16/06	MJA	FL
REV	DCN No.	DATE	BY	CHKD
CLEVELAND CONTROLS MODEL: AFS-227-161				
DRAWING RELEASE No. 3259		THIS PRINT IS THE EXCLUSIVE PROPERTY OF CLEVELAND CONTROLS AND CANNOT BE REPRODUCED IN WHOLE OR IN PART OR ISSUED OR DISCLOSED TO THIRD PARTIES WITHOUT THE EXPRESS WRITTEN CONSENT OF CLEVELAND CONTROLS.		
DWN	DATE	CHKD	USED ON	
MJA	1/21/05	FL	SHEET 1 OF 1	
CHKD	DATE	SCALE	A18472-161 C REV	
FL	1/21/05	NONE		
Cleveland Controls Division of UniControl Inc. 1111 Brookpark Rd. Cleveland, Ohio 44109-5825 .XX = ±.015 .XXX = ±.005 ANGLES = 1				