

 Evergreen®
ECM MADE EASY™

SAVE THE MOTOR - REPLACE THE CONTROL

GENUINE GENTEQ® CONTROL MODULE FOR GENTEQ X13®
ENDURA® PRO AND EVERGREEN® EM MOTORS

ALL THE BENEFITS OF THE EVERGREEN® EM MOTOR YOU ENJOY TODAY

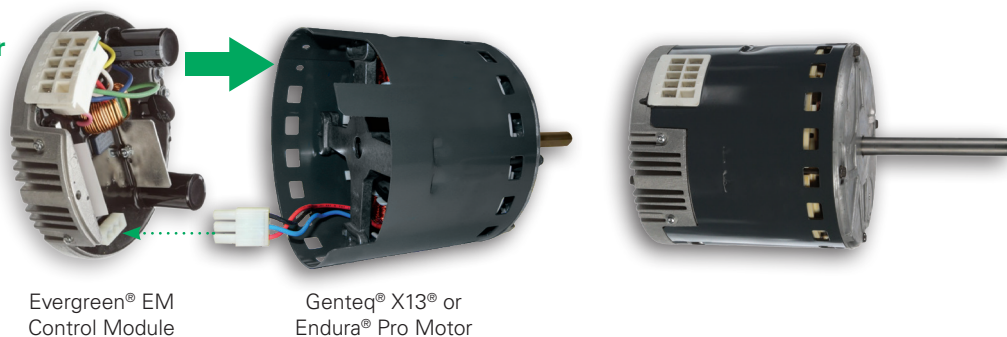
- Pre-programmed
- No complex wiring
- Auto rotation sensing
- Compatible with OEM harness/plugs
- 2 year warranty

ADDITIONAL BENEFITS OF CONTROL ONLY REPLACEMENT WITH THE EVERGREEN EM CONTROL MODULE

- Reduce part replacement time
 - › Two bolts connect the control to the motor
 - › The motor does not have to be removed from the blower housing
- Reduce the repair cost to the consumer
 - › Replace the control by itself, use the existing motor
- Reduce the size and weight of part on truck

Easy as 1, 2, DONE

1. Plug it in
2. Bolt it together



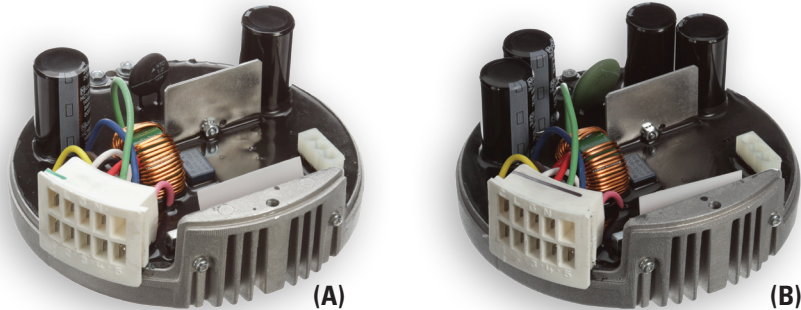
Evergreen® EM
Control Module

Genteq® X13® or
Endura® Pro Motor

SAVE THE MOTOR - REPLACE THE CONTROL

GENUINE GENTEQ® CONTROL MODULE FOR GENTEQ X13®
ENDURA® PRO AND EVERGREEN® EM MOTORS

CONTROL MODULE KIT



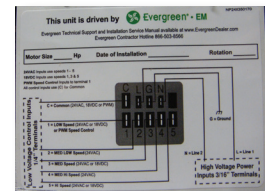
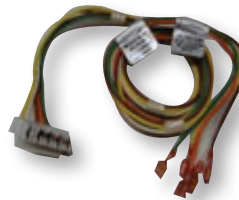
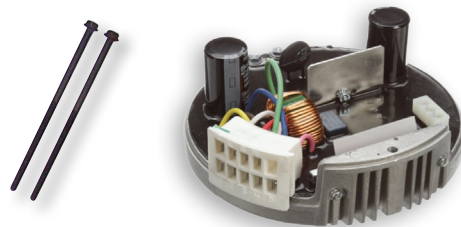
STOCK #	HP	VAC	MAX CURRENT	ROTATION	IMAGE
6103ECTL	1/3	115	4.8 A	CCW/CW	A
6105ECTL	1/2	115	6.8 A	CCW/CW	A
6107ECTL	3/4	115	8.4 A	CCW/CW	A
6110ECTL	1	115	10.9 A	CCW/CW	B
6203ECTL	1/3	208-230	2.8 A	CCW/CW	A
6205ECTL	1/2	208-230	4.1 A	CCW/CW	A
6207ECTL	3/4	208-230	6.0 A	CCW/CW	A
6210ECTL	1	208-230	7.6 A	CCW/CW	B

APPLICATION

- The Evergreen® EM Control Module can be used to replace ECM Control Modules in the following motors ONLY: Genteq® Models X13®, Endura® Pro and Evergreen EM. All of these motors are built with control connections identical to the images below.
- For proper replacement, match the horsepower (HP) and voltage (VAC) ratings of the new control to the failed control. It is not necessary for the RPM or the amperage (FLA) to match.
- This kit includes:
 - 1 - Evergreen EM control module
 - 2 - control mounting bolts
 - 1 - low voltage harness (OPTIONAL)
 - 1 - motor ID label



Get technical support for Evergreen EM motors.
Scan this code with your smart phone or go to
www.EvergreenEM-motors.com



Regal Beloit America, Inc.

1325 Heil Quaker Blvd.
LaVergne, TN 37086
Customer Service: 800-672-6495
Fax: 800-468-2062

www.RegalBeloit.com

APPLICATION CONSIDERATIONS

The proper selection and application of products and components, including the related area of product safety, is the responsibility of the customer. Operating and performance requirements and potential associated issues will vary appreciably depending upon the use and application of such products and components. The scope of the technical and application information included in this publication is necessarily limited. Unusual operating environments and conditions, lubrication requirements, loading supports, and other factors can materially affect the application and operating results of the products and components and the customer should carefully review its requirements. Any technical advice or review furnished by Regal Beloit America, Inc. and/or its affiliates ("Regal") with respect to the use of products and components is given in good faith and without charge, and Regal assumes no obligation or liability for the advice given, or results obtained, all such advice and review being given and accepted at customer's risk.

For a copy of our Standard Terms and Conditions of Sale, please visit <http://www.regalbeloit.com> (please see link at bottom of page to "Standard Terms and Conditions of Sale"). These terms and conditions of sale, disclaimers and limitations of liability apply to any person who may buy, acquire or use a Regal product referred to herein, including any person who buys from a licensed distributor of these branded products.