

PRODUCT INFORMATION PACKET

FASCO®

Model No: D0975

Catalog No: D0975

OEM Replacement Motor, 1/20 HP, 1 Ph, 60 Hz, 115 V, 1045 RPM, 1 Speed, 42 Frame, OAO



Regal and Fasco are trademarks of Regal Rexnord Corporation or one of its affiliated companies.

©2022 Regal Rexnord Corporation, All Rights Reserved. MC017097E

RegalRexnord



Nameplate Specifications

Output HP	1/20 Hp	Output KW	0.04 kW
Frequency	60 Hz	Voltage	115 V
Current	1.13 A	Speed	1045 rpm
Service Factor	1	Phase	1
Duty	Continuous Air Over	Insulation Class	B
Frame	42	Enclosure	Open Air Over
Thermal Protection	Thermally Protected	Ambient Temperature	40 °C
UL	Recognized	CSA	Y
CE	N	Number of Speeds	1

Technical Specifications

Electrical Type	Permanent Split Capacitor	Starting Method	Across The Line
Poles	6	Rotation	Clockwise Shaft End
Mounting	Extended Studs	Drive End Bearing	Ball
Opp Drive End Bearing	Ball	Frame Material	Rolled Steel
Shaft Type	Flat	Frame Length	3.30 in
Shaft Diameter	0.375 in	Shaft Extension	2.25 in
Outline Drawing	71870425		

This is an uncontrolled document once printed or downloaded and is subject to change without notice. Date Created:11/30/2022

- NOTES
1. STATOR LOCATION DIMENSION IS FROM SLEEVE EDGE (OPPOSITE LEAD END) TO STATOR STEEL 1.04/1.02.
 2. STATOR STACK 1/2".
 3. THRU AIR SPACING BETWEEN WIRE AND METAL .094 MIN.
 4. TIE BOLT TORQUE TOLERANCE 13 - 17 IN. LBS.
 5. FOR WASHER SET-UP, SEE CHART C600 0279, DETAIL A.
 6. ASSEMBLE BEARING SPRING, 0051 1620, IN OPP. LE. END SHIELD, ASSEMBLE BEARING SPACER, 0006 1226, IN OPPOSITE END SHIELD.
 7. ASSEMBLE NYLON INSERT 00613346, AROUND LEADS IN LEAD EXIT NOTCH AT 150°.
 8. SALES TO SPECIFY ON P.O. WHICH PACK TO USE.

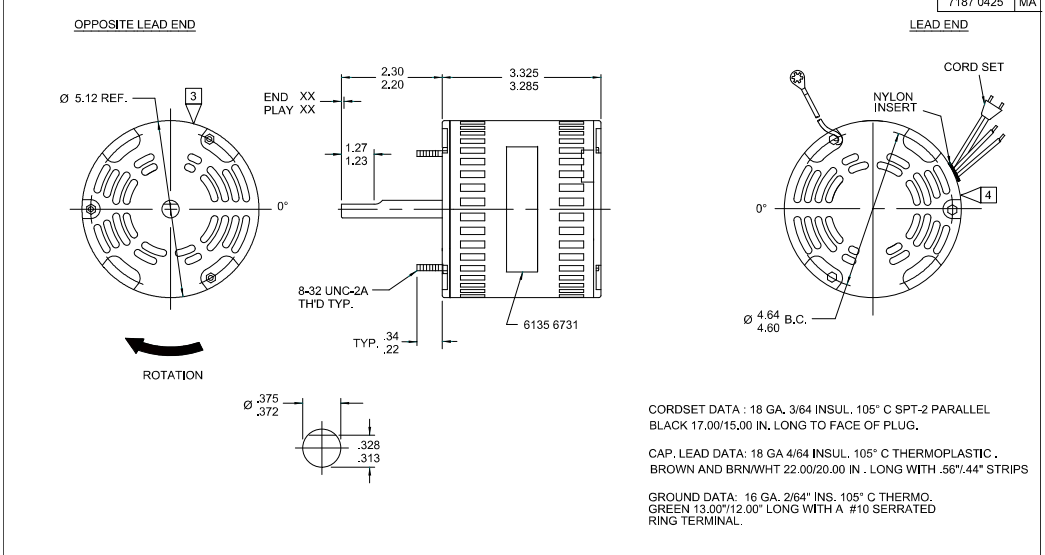
ECO	REV.	DATE	SPEC/CHECK
NMR-0211490	AA	11-10-21	NV/MVN
ECR-0214874	AB	01-18-22	NV/MVN
ECR-0221901	AC	11/7/2022	MP/DP

71xx xxxcR
 A SEE PACKAGING MANUAL PAGE 2 FOR PACKAGING PROCEDURES.
 1 MOTOR/CARTON:
 21 MOTORS/LAYER:
 6 LAYERS/PALLET:
 126 MOTORS/PALLET:
 B SEE DRAWING 87856079 SH. 2 FOR PALLET LAYOUT.
 C CENTER LABEL 6131 6822, ON END OF CARTON.
 D PLACE PAMPHLET, 6122 4579, IN CARTON WITH MOTOR.

71xx xxxcC
 71xx xxxcZ

If Printed, this is an Uncontrolled Document.

PRODUCTION TEST AT IDLE 115 VOLTS 60 HZ		MOTOR VOLTAGE	PERFORMANCE TEST 115 VOLTS 60 HZ 1 PH 1/20 HP CAP. 5 MFD 370 VAC										
AMP	WATT		IDLE					LOADED					BREAK
AMP	WATT		RPM	AMP	WATT	OZ/IN	RPM	AMP	WATT	OZ/IN	AMP	WATT	OZ/IN
1.12 — 0.89	77.0 — 63.0	HIGH		1	70	57.1	1045	1.22	109	29.2		171	72.1
HI-POT TEST 2000 VOLTS													
MAX LEAKAGE CURRENT 5 mA													



FASCO FASCO INDUSTRIES, INC. MOTOR DIVISION ASSEMBLED IN MEXICO

UL THERMALLY PROTECTED

V.115 HZ.60 PH.1 ROT. CONNECTION DIAGRAM
 HP 1/20 INS CL B CAP 5 MFD 370 VAC
 AMP 1.22 40°C AMB NO. 7187-0425
 RPM 1045 AD TYPE U18731
 SHIELDED BALL BEARING

MODEL D0975

DATE/BAR CODE AREA PER 8882 6003

6135 6731.R REV. AC

LOCATE C OF NAMEPLATE ON C OF SLEEVE TO READ RIGHT FROM LEAD END OF MOTOR CENTER AT 0°.

SIZE 3.50 X 1.00

SPECIAL INSTRUCTIONS: SHAFT IS BONDERIZED.

MOTORS PACKED MAX. PER SKID: PALLET PACK 126 CARTON PACK TRAY PACK.

CUSTOMER: FASCO DISTRIBUTING CO. FASCO INDUSTRIES, INC. MOTOR DIVISION REYNOSA PLANT

PART NUMBER: D0975

APPLICATION: DIST. SALES MOTOR TYPE P.S.C. MOTOR NUMBER REV. 7187 0425 AC

FINISH COLOR: GRAY

MOTOR WEIGHT: LBS.

ENVIRONMENT: DRY

INSULATION CLASS: B

B	LA	FR	A	S	C	E	B	A
00	87	30	V	16	5	0	0	0

3 of 3