

# Top Replacements

for General Purpose Commercial Motors



**REPLACEMENT MOTOR?  
WE'VE GOT YOUR NUMBER!**

Rely on **US**<sup>SM</sup>

**Nidec**  
NIDEC MOTOR CORPORATION

# Table of Contents

Direct Drive Fan & Blower Motors .....	1
Three Speed Double Shaft Blower Motors .....	2
Unit Heater Fan Motors .....	2
Condenser Fan Motors .....	3
Split Phase Belted Fan & Blower Motors .....	4
Capacitor Start Belted Fan & Blower Motors .....	4
Carbonator Pump Motors .....	5
Oil Burner Motors .....	5
Special Application Agriculture Duty Motors .....	6
Three Phase Belt Drive Fan & Blower Motors .....	6
Three Phase Condenser Fan Motors .....	7
General Purpose Split Phase Motors .....	8-9
General Purpose Capacitor Start Motors .....	10-13
General Purpose Capacitor Start – Capacitor Run Motors .....	14-16
General Purpose Single Phase Hazardous Location Motors .....	16
General Purpose Three Phase Motors .....	17-20
Replacement Motor Cross Reference .....	21-26

All motors are sold pursuant to Nidec Motor Corporation standard terms and conditions of sale which can be found at: [www.nidec-motor.com/Nidec\\_Terms.pdf](http://www.nidec-motor.com/Nidec_Terms.pdf)



[www.usmotors.com](http://www.usmotors.com)

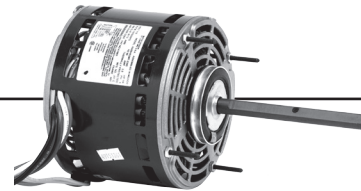
16-8400-01

† All marks shown within this document are properties of their respective owners.



# Direct Drive Fan & Blower Motors

## PSC, 48 Frame, Open Air Over



### APPLICATIONS:

Residential and commercial direct drive fans and blowers.

### FEATURES:

- All angle mount
- Designed for use with 370V Capacitors except Catalog # 1405- 440V
- Class B Insulation
- Continuous Duty
- Stud Extensions
- Reversible Rotation
- Automatic Reset Thermal Overload Protector
- 2.5" Dia. Hub Rings Included, 2.25" Dia. Hub Rings for Catalog # 1690, 1692 & 1694

### Single Speed

HP	Volts	RPM	Catalog Number	Amps	Cap. MFD	Bearing Type	Marathon Motor	Cross Reference
1/6	230	1550	1402	1	3	BALL	X475	
		1075	1404	1.1	5	BALL	X471	
	115	1625	1406	2.2	10	BALL	X477	
		1075	1405	2.3	7.5	BALL	X473	
1/4	230	1625	1407	1.2	4	BALL	X476	
		1075	1408	1.4	5	BALL	X474	

### Three Speed

HP	Volts	RPM/SPD	Catalog Number	Amps	Cap. MFD	Bearing Type	Marathon Motor	Cross Reference
1/4	208-230	1625/3	1394	1.71	5	BALL	X014	
		1075/3	1971	1.5	7.5	SAB	X1001	C, G
	115	1625/3	1690	2.7	10	SAB	X013	C, G
		1075/3	1863	3.5	7.5	SAB	X000	C, G
1/3	208-230	1625/3	1693	2.1	5	SAB	X011	
		1075/3	1972	2.4	7.5	SAB	X003	C, G
	115	1625/3	1692	3.7	15	SAB	X015	C, G
		1075/3	1864	5	8	SAB	X002	C, G
1/2	208-230	1625/3	1695	3.1	7.5	SAB	X017	
		1075/3	1973	2.9	10	SAB	X005	C
	115	1625/3	1694	5.5	20	SAB	X016	C, G
		1075/3	1865	6.5	10	SAB	X004	C, G
3/4	208-230	1075/3	8905	4	15	SAB	X010	C, G
	115	1075/3	8904	9.5	15	SAB	X009	C, G
1	208-230	1625/3	1700	5.1	20	SAB	X211	

### Cross-Reference Key

L = Leeson    W = WEG    B = Baldor    C = Century    G = Grainger

\*Catalog numbers for all competitor products in cross-reference column and key are listed in back Cross Reference section.

† All marks shown within this document are properties of their respective owners.



16-8400-01

## Three Speed Double Shaft Blower Motors PSC, 48 Frame, Open Air Over



### APPLICATIONS:

Residential and commercial direct drive fans and blowers.

### FEATURES:

- Designed for use with 370V Capacitors
- CCW Lead End Rotation
- Bearings Have All Angle Thrust System
- Class B Insulation
- Automatic Reset Thermal Overload Protector
- Hub rings are 2 1/2" Diameter, mounting kit included

HP	Volts	RPM/SPD	Catalog Number	Amps	Cap. MFD	Marathon Motor	Cross Reference
1/6	115	1075/3	NAL1016	2.8	5	X042, X048	C, G
	208-230	1075/3	NA1016	1	5	X043, X049	C, G
1/3	208-230	1075/3	NA1036	2.6	5	X045, X052, X258	C, G

## Unit Heater Fan Motors PSC, 48 Frame, Resilient Base, Totally Enclosed Air over



### APPLICATIONS:

Designed to meet manufacturer's requirements for use on Unit Heaters.

### FEATURES:

- Reversible Rotation
- Automatic Reset Thermal Overload protector
- 2-1/2" Diameter Hub rings
- Designed for use with 440V Capacitors except Catalog # 1388- 370V
- Class B Insulation
- Stud Extensions

HP	Volts	RPM	Catalog Number	Amps	Cap. MFD	Marathon Motor	Cross Reference
1/6	115	1625	1385	2.5	7.5	X301	
		1075	1386	2.61	7.5	X302	G
1/4	115	1075	1384	3.6	5	X303	C
1/3	115	1075	1388	5.35	5	X304	

### Cross-Reference Key

L = Leeson    W = WEG    B = Baldor    C = Century    G = Grainger

\*Catalog numbers for all competitor products in cross-reference column and key are listed in back Cross Reference section.

† All marks shown within this document are properties of their respective owners.



16-8400-01



# Condenser Fan Motors

## APPLICATIONS:

Residential and commercial condensing unit fan motors to meet manufacturer's requirements.

## FEATURES:

- Designed for use with 370V Capacitors
- Class B Insulation
- Reversible Rotation, except Catalog # 3330
- Band/ stud mount, except cat # 1354 - bracket mount
- Automatic Reset Thermal Overload Protector
- 140 °F (60 °C) Ambient Design except for Catalog #'s 3330, 5455, 8670, 8667, 3097, 7041, 1354- 104 °F (40 °C)
- Bearings Have All Angle Thrust System



### Permanent Split Capacitor, 48 Frame, Totally Enclosed Air Over (TEAO)

HP	Volts	RPM/SPD	Catalog Number	Amps	Cap. MFD	Bearing Type	Marathon Motor	Cross Reference
1/4	208-230	1625	1890	1.4	5	SAB	X467	
		1075	1876	1.5	5	BALL	X412	C
		1110	8230	1.6	5	SAB	X470	C
1/3	208-230	1625	1891	1.6	7.5	BALL	X466	
		1075	1877	2	7.5	BALL	X413	C
		1075	5455	2	5	SAB	X297	C
		1075/2	8670	2.2	7.5	SAB	X083, X082	C
1/2	208-230	1625	1892	3	5	SAB	X468	
		1075	3330	5.8	7.5	BALL	X203	
		1075	1878	3.1	10	BALL	X414	C, G
	460	1075	3738	1.5	10	BALL	X400	C
3/4	208-230	1075	1879	4.7	10	BALL	X469	C

### Permanent Split Capacitor, 48 Frame, Open Air Over (OAO)

HP	Volts	RPM/SPD	Catalog Number	Amps	Cap. MFD	Bearing Type	Marathon Motor	Cross Reference
1/4	208-230	1625	1355	1.2	5	BALL	X012	
		1075	3851	1.7	5	SAB	X087, X213	C
	230	825	8666	1.9	5	SAB	X097	
1/3	208-230	1075	6880	2.5	5	SAB	X214, X088	C
		1075/2	1354	2	7.5	BALL	X222	
	230	825	8667	2	7.5	SAB	X086	
1/2	208-230	1075	3852	3.1	7.5	SAB	X221, X096	C
		825	7041	2.8	12.5	BALL	X098	C
3/4	208-230	1075	3097	4.7	10	SAB	X298	C
	230	1075	8665	4.4	12.5	BALL	X090	



### Permanent Split Capacitor, 56 Frame, Open Air Over (OAO)

HP	Volts	RPM	Catalog Number	Amps	Cap. MFD	Bearing Type	Marathon Motor	Cross Reference
1	208-230/460	1075	8431	5.8-5.4/2.7	12.5	BALL	P190, X448	

## Cross-Reference Key

L = Leeson    W = WEG    B = Baldor    C = Century    G = Grainger

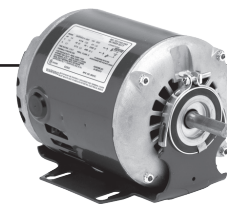
\*Catalog numbers for all competitor products in cross-reference column and key are listed in back Cross Reference section.

† All marks shown within this document are properties of their respective owners.

16-8400-01



## Split Phase Belted Fan & Blower Motors



### APPLICATIONS:

Designed to meet manufacturer's requirements for belted fans and blowers.

### FEATURES:

- Resilient Base
- Class B Insulation
- Reversible Rotation
- Automatic Reset Thermal Overload Protector

#### 48 Frame, Single Speed, Open Drip-Proof

HP	Volts	RPM	Catalog Number	Amps	Bearing Type	Marathon Motor	Cross Reference
1/6	115/208-230	1725	3615	3.6/1.7-1.8	Ball	D107	G
1/4	115/208-230	1725	3618	5.2/2.5-2.6	Ball	4306	C, G
	115	1725	8000	5.3	Ball	B303, B206, 4701, S126, 4730	B, C, G
1/3	115	1725	8100	6.4	Ball	B207, B305, 4706, B400, 4731, S127	C, G
	115/208-230	1725	PD6004	6.6/3.1-3.3	Ball	H167	
1/2	115	1725	8200	8	Ball	B208, B307, 4708, S128, 4732	C, G
		1725	1369	8	Ball	4392	
	115/208-230	1725/1425	PD6006	8.6/4.2-4.3	Ball	D163	

#### 56 Frame, Single Speed and Two Speed, Open Drip-Proof

HP	Volts	RPM	Catalog Number	Amps	Bearing Type	Marathon Motor	Cross Reference
1/2	115/230	1725	4114	8.0/4.0	Ball	D149	B, C, G
	115	1725/1140	4293	9.2/6.0	Ball	H176	G

## Capacitor Start Belted Fan & Blower Motor



### APPLICATIONS:

Designed to meet manufacturer's requirements for belted fans and blowers.

### FEATURES:

- Resilient Base
- Class B Insulation
- Reversible Rotation
- Automatic Reset Thermal Overload Protector

#### 48 Frame, Single Speed, Open Drip-Proof

HP	Volts	RPM	Catalog Number	Amps	Bearing Type	Marathon Motor	Cross Reference
1/3	115/230	1725	180	6.0/3.0	Ball	B315, C210	L, B, C, G

### Cross-Reference Key

L = Leeson    W = WEG    B = Baldor    C = Century    G = Grainger

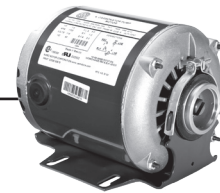
\*Catalog numbers for all competitor products in cross-reference column and key are listed in back Cross Reference section.

† All marks shown within this document are properties of their respective owners.

16-8400-01

## Carbonator Pump Motors

### Split Phase, 5.6" Diameter, Open Drip-Proof



#### APPLICATIONS:

Design end shield with extended hub and short slotted shaft for close coupling carbonator pump to motor.

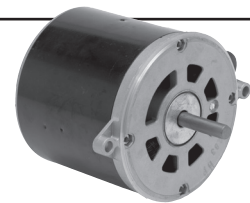
#### FEATURES:

- Class B Insulation
- Reversible Rotation
- Automatic Reset Thermal Overload Protector
- All Ball Bearing Construction
- Special Slotted Shaft
- Threaded Conduit Hub

HP	Volts	RPM	Catalog Number	Amps	Marathon Motor	Cross Reference
1/4	115	1725	1004	5	4725	G
1/3	115	1725	1003	6.5	4406	G
	100-120/200-240	1725/1425	6079	6.4-6.3/3.0-3.1	4805	G
1/2	120/240	1725	6078	7.5/3.6	H684	B, C, G

## Oil Burner Motors

### Split Phase, 5.6" Diameter, Totally Enclosed, Non-Ventilated When Mounted, Without Base



#### APPLICATIONS:

Designed to meet manufacturer's requirements for oil burners.

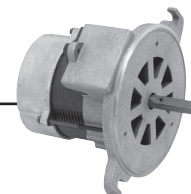
#### FEATURES:

- 40°C Ambient
- Manual Reset Thermal Overload Protector
- Bearings Have All Angle Thrust System
- Reversible Rotation
- 20" Leads

HP	Volts	RPM	Catalog Number	Amps	Marathon Motor	Cross Reference
1/8	115	1725	3196	2.4	O600	C, G
1/7	115	3450	3083	2.6	O100	C, G
1/6	115	1725	3252	3.1	O601	
1/4	115	3450	2302	3.7	O004	C, G

## Oil Burner Motor

### PSC, 48M Flange Mount, Totally Enclosed When Mounted



#### APPLICATIONS:

Designed to meet manufacturer's requirements for oil burners.

#### FEATURES:

- Designed for use with 16 MFD at 240V
- Bearings Have All Angle Thrust System
- CCW drive end rotation

HP	Volts	RPM	Catalog Number	Amps	Cap. MFD	Marathon Motor	Cross Reference
1/7	115	3450	3274	1.7	16	4777	C, G

#### Cross-Reference Key

L = Leeson    W = WEG    B = Baldor    C = Century    G = Grainger

\*Catalog numbers for all competitor products in cross-reference column and key are listed in back Cross Reference section.

† All marks shown within this document are properties of their respective owners.



16-8400-01

## Special Application Agriculture Duty Motors

### Capacitor Start, Totally Enclosed Fan Cooled, Ultra High Torque, Rigid Base



#### APPLICATIONS:

For powering agitators, augers, compressors, conveyors, feeders and hay hoists.  
High torque motors are used on barn cleaners, manure pumps and silo unloaders.

#### FEATURES:

- Class F Insulation except Catalog # FD32CM2P14 - Class B
- Reversible Rotation
- Ball Bearing
- 40°C Ambient, Continuous Duty
- Manual Reset Thermal Overload Protector

HP	Volts	RPM	Catalog Number	Amps	Frame	Marathon Motor	Cross Reference
1	115/230	1725	FD1CM2P14	15.0/7.5	145T	Z123	L, B, G
1 1/2	115/230	1725	FD32CM2P14	16.2/8.1	145T	Z118	B, G
3	230	1760	FDU3CM2K18	17	184T	Z113A	B, G
5	230	1740	FDU5CM2K18	24	184T	Z114	B, G
		1625	FDU5CM2K21Z	29	215TZ	Z117	L, W, B, C, G
7 1/2	230	1725	FDU7CM2K21Z	30.8	215TZ	Z115	L, B, C, G
10	230	1735	FDU10CM2K21	41	215T	Z116, I217	L, W, B, C, G

## Three Phase Belt Drive Fan & Blower Motors

### 56 Frame, Open Drip-Proof



1814P

#### APPLICATIONS:

Designed to meet manufacturer's requirements for belt-drive blowers in commercial air conditioning applications where 3 Phase power is required.

#### FEATURES:

- Class B Insulation
- Automatic Reset Thermal Overload Protector
- Reversible Rotation
- Ball Bearing
- Continuous Duty
- Dual Voltage
- 40°C Ambient temp

HP	Volts	RPM	Catalog Number	Amps	Frame	Marathon Motor	Cross Reference
1 1/2	208-230/460	1725/1425	1814P	4.8-4.8/2.4 & 5.3-2.6	Rigid Base	G923	

#### Cross-Reference Key

L = Leeson    W = WEG    B = Baldor    C = Century    G = Grainger

\*Catalog numbers for all competitor products in cross-reference column and key are listed in back Cross Reference section.

† All marks shown within this document are properties of their respective owners.

# Three Phase Condenser Fan Motors

## 56 Frame, High Ambient Temp, Open Air Over

**APPLICATIONS:**

Designed to meet manufacturer's requirements for condenser cooling fans in commercial air conditioning where 3 Phase power is required.

**FEATURES:**

- 158 °F (70 °C) Ambient Design
- Class F Insulation except Catalog # 1817H
- Automatic Reset Thermal Overload Protector
- Reversible Rotation
- Double Sealed Ball Bearing



**Belly Band Mount**

HP	Volts	RPM	Catalog Number	Amps	Frame Size	Marathon Motor	Cross Reference
3/4	208-230/460	1140	1817H	2.8/1.4	56Z	X501	L, B, C
1	208-230/460	1140	1818H	4.2/2.1	56Z	X502	C
		850	1828H	4.8/2.4	56Z	X507	
1 1/2	208-230/460	1140	1819H	5.4/2.7	56Z	X503	C
		850	1832H	6.8-6.6/3.3	56Z	X530	
2	208-230/460	1140	8987H	7.6-7.4/3.7	56Z	X509	



**Rigid Base Mount**

HP	Volts	RPM	Catalog Number	Amps	Frame Size	Marathon Motor	Cross Reference
1	208-230/460	1140	1820H	4.2/2.1	56Z	X513	L
		850	1833H	4.8-2.4	56Z	X528	
1 1/2	208-230/460	1140	1821H	5.4/2.7	56Z	X523	L
		850	1831H	6.8-6.6/3.3	56Z	X531	
2	208-230/460	1140	1822H	7.6-7.4/3.7	56Z	X525	

**Cross-Reference Key**

L = Leeson    W = WEG    B = Baldor    C = Century    G = Grainger

\*Catalog numbers for all competitor products in cross-reference column and key are listed in back Cross Reference section.

† All marks shown within this document are properties of their respective owners.



# General Purpose Split Phase Motors Open Drip-Proof (ODP)

## APPLICATIONS:

For commercial and industrial ventilation systems.

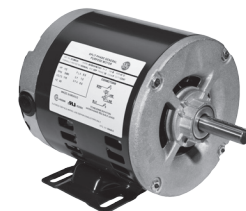
## FEATURES:

- 40°C Ambient
- Reversible Rotation
- Continuous Duty
- Ball Bearing



## Resilient Base

HP	Volts	RPM	Catalog Number	Amps	Thermal protector	Frame Size	Marathon Motor	Cross Reference
1/6	115	1725	D16BA2N4Z9	4.2	Auto	48Z	B322	
		1725	D16B2N4Z9	4.2	None	48Z	HG156, B300, 4304	G
		1140	D16B3N4Z9	4.5	None	48Z	HG695	C, G
1/4 / 1/8	115	1725/1140	D14B10N4Z9	4.6/4.3	None	48Z	H171	
1/4	115	1725	D14B2N49	5.1	None	48	S102, 4355, B302, H160	G
		1140	D14B3N9	5.5	None	56	H162	C, G
1/3 / 1/9	115	1725/1140	1411	5.9/4.0	Auto	48	B402	
		1725/1140	1364	6.1/3.5	None	56	H173	
		1725/1140	D13BA10N9	6.1/3.5	Auto	56	H174	
		1725/1140	D13B10N49	6.4/4.0	None	48	4396	L, W, B, C, G
1/3	115	1725	D13B2N4A9	6.8	None	48	S106, 4369	G
		1725	D13B2N4Z9	7.0	None	48Z	B304, H164	
		1725	D13B2NZA9	6.0	None	56Z	4377	
	115/230	1140	D13B3P9	7.5/3.8	None	56	H168	G
1/2 / 1/6	115	1725/1140	3306	9.2	None	56	H175	
1/2	115	1725	D12B2N4Z9	8.9	None	48Z	B306	
		1725	D12B2NA9	8.9	None	56	S120, H286	
3/4	115	1725	D34B2N9	11.3	None	56	4422	



## Rigid Base

HP	Volts	RPM	Catalog Number	Amps	Thermal protector	Frame Size	Marathon Motor	Cross Reference
1/4	115	1725	D14B2N4Z	5.3	None	48Z	H901, 4351, H239, S003	G
1/3	115	1725	D13B2N4A	6.8	None	48	S006	W, B, C, G
1/2	115	1725	1366	8.9	None	56	S022	W

## Cross-Reference Key

L = Leeson    W = WEG    B = Baldor    C = Century    G = Grainger

\*Catalog numbers for all competitor products in cross-reference column and key are listed in back Cross Reference section.

† All marks shown within this document are properties of their respective owners.

16-8400-01

## General Purpose Split Phase Motors C-Face Footless, 56 Frame, Open Drip-Proof



### APPLICATIONS:

For commercial and industrial ventilation systems.

### FEATURES:

- 40°C Ambient
- Reversible Rotation
- Continuous Duty
- Ball Bearing

HP	Volts	RPM	Catalog Number	Amps	Frame Size	Marathon Motor	Cross Reference
1/12	115	1140	D0112B3NCR	2.3	56C	H204	
1/4 / 1/12	115	1725/1140	D14B10NCR	4.7/2.5	56C	H223	
1/4	115	1140	D14B3NCR	5.5	56C	H214	
1/3 / 1/9	115	1725/1140	D13B10NCR	6.1/3.5	56C	H225	
1/2 / 1/6	115	1725/1140	D12B10NCR	7.5/4.9	56C	H226	
1/2	115	1725	D12B2NCR	6.8	56C	H290	L, B, C, G

### Cross-Reference Key

L = Leeson    W = WEG    B = Baldor    C = Century    G = Grainger

\*Catalog numbers for all competitor products in cross-reference column and key are listed in back Cross Reference section.

† All marks shown within this document are properties of their respective owners.

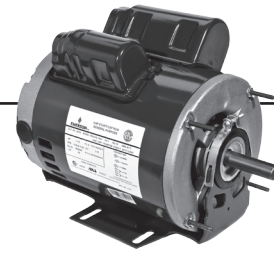


16-8400-01



# General Purpose Capacitor Start Motors

## Resilient Base, Open Drip-Proof



### APPLICATIONS:

For compressors, pumps, conveyors, blowers and general industrial equipment.

### FEATURES:

- Class B Insulation
- 104 °F (40 °C) Ambient Design
- Single speed except Catalog # 6311
- Reversible Rotation

HP	Volts	RPM	Catalog Number	Amps	Thermal protector	Frame Size	Marathon Motor	Cross Reference
1/4	115/230	1725	D14CP2P49	3.1/1.5	None	48	G1114, S118	
		1725	D14CPA2P49	3.1/1.5	Auto	48	B313, G1115, S119	L, B, C, G
1/3	115/230	3450	D13CPA1P49	3.7/1.8	Auto	48	C208	
		1725	D13CPA2P49	3.8/1.9	Auto	48	D119, S111	L, G
		1725	D13CPA2P9	3.8/1.9	Auto	56	C216	G
	115/230&110/220	1725/1425	D13CP2Z49	3.8/1.9	None	48	S110, C209	L, B
		1725/1425	D13CP2PH9	3.8/8.9	None	56H	C215	L, G
	115/230	1140	D13CPA3P9	4.4/2.3	Auto	56H	C548	G
1/2	115/230	3450	D12CP1P49	5.0/2.5	None	48	C219	
		1725	D12CPA2P49	6.4/3.2	Auto	48	C133	L, C
		1725	D12CPA2PH9	5.0/2.6	Auto	56H	B317, D111, S113, CG223	L, W, B, C
		1725	D12CP2PH9	6.4/3.2	None	56H	S112, B1316, B316	L, C, G
3/4 / 1/4	115	1725/1140	6311	8.9/6.1	None	56	C420	L, B, C, G
3/4	115/230	1725	D34CP2PH9	7.0/3.5	None	56H	CG230, S114, B318	L, G
		1725	D34CPA2PH9	7.0/3.5	Auto	56H	D1113	
		1725	1660	11.6/5.8	Auto	56	S115	L, B, G
	115/208-230	1725	1893	11.4/5.7	Auto	56	B319	L, B, C, G
1	115/230	1725	D1CPA2PH9	8.8/4.4	Auto	56H	4688, C1158, S117, CG236	L, B, C, G
		1725	D1CP2PH9	8.8/4.4	None	56H	S116, C235, B310	L, C, G
1 1/2	115/230	3450	D32CPA1PH9	13.3/6.7	Auto	56H	D115	
		1725	D32CPA2PH9	13.4/6.7	Auto	56H	C1160, CG239	B, G

### Cross-Reference Key

L = Leeson    W = WEG    B = Baldor    C = Century    G = Grainger

\*Catalog numbers for all competitor products in cross-reference column and key are listed in back Cross Reference section.

† All marks shown within this document are properties of their respective owners.



16-8400-01

# General Purpose Capacitor Start Motors

## Rigid Base, Open Drip-Proof



### APPLICATIONS:

For compressors, pumps, conveyors, blowers and general industrial equipment.

### FEATURES:

- Class B Insulation
- 104 °F (40 °C) Ambient Design
- Double Shielded Ball Bearings
- Reversible Rotation

HP	Volts	RPM	Catalog Number	Amps	Thermal protector	Frame Size	Marathon Motor	Cross Reference
1/4	115/230	1725	D14CP2P4	3.1/1.5	None	48	C147	
		1725	D14CPM2P4	3.1/1.5	Manual	48	G078	L, B, G
1/3	115/230&110/220	1725	D13CPA2Z4	3.8/1.9	Auto	48	C154	L, B
	115/230	1725	D13CPM2P	3.9/1.9	Manual	56	G095	L, B, C, G
		1725	D13CP2P4	3.8/1.9	None	48	S010, C153	L, W, B, C, G
1/2	115/230	1725	D12CPA2P	5.0/2.6	Auto	56	C168, S013	L, B, C, G
		1725	D12CPM2PH	6.4/3.2	Manual	56	C169	
		1725	D12CP2P	6.4/3.2	None	56	C167, S012	L, W, B, C, G
3/4	115/230	3450	D34CP1PH	7.0/3.6	None	56H	G915	L, W, B, C, G
		3450	D34CPM1PH	7.0/3.6	Manual	56H	C1475, C1474	
		1725	D34CPM2PH	7.0/3.5	Manual	56H	G919	L, B, C, G
		1725	D34CP2PH	7.0/3.5	None	56H	C175, S014	L, W, B, C, G
		1725	D34CPA2PH	7.0/3.5	Auto	56H	S015, C176	B, G
1	115/230	3450	D1CPA1PH	9.3/4.3	Auto	56H	C180	
		3450	D1CP1PH	9.3/4.3	None	56H	C179	B, G
		1725	D1CPM2PH	8.8/4.4	Manual	56H	C1480	
		1725	D1CP2PH	8.8/4.4	None	56H	C181, S037	L, W, B, C, G
		1725	D1CPA2PH	8.8/4.4	Auto	56H	S038, C182	L, C, G
	115/208-230	1725	D1C2J14	13.3	None	143T	C188	G
1 1/2	115/230	3450	D32CPM1PH	13.3/6.7	Manual	56H	C1477	G
		3450	D32CP1PH	13.3/6.7	None	56H	G937	L, W, B, C, G
		1725	D32CPA2PH	13.4/6.7	Auto	56H	C186	
		1725	D32CP2PH	13.4/6.7	None	56H	C185	
	115/208-230	1725	D32C2J14	17.3	None	145T	C191	W, G
2	115/230	3450	D2CP1PH	17.3/8.7	None	56H	C187	L, B, C, G
3	115/230	3500	D3C1P18	16	None	182	I103	L, W, B, C, G
		1735	D3C2P18	19	None	184T	I113A	
5	230	3520	D5C1K18	19.6	None	184T	I104A	G
		1740	D5C2K18	22	None	184T	I114A	G
7 1/2	230	3480	D7C1K21	30.3	None	213T	I105	L, W, B, C, G
		1730	D7C2K21	35.5	None	215T	I115	L, W, B, C, G
10	230	1740	D10C2K21	42.2	None	215T	I116	L, B, G

### Cross-Reference Key

L = Leeson    W = WEG    B = Baldor    C = Century    G = Grainger

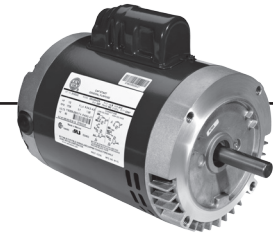
\*Catalog numbers for all competitor products in cross-reference column and key are listed in back Cross Reference section.

† All marks shown within this document are properties of their respective owners.



16-8400-01

## General Purpose Capacitor Start Motors 56 Frame, C-Face Footless, Open Drip-Proof



### APPLICATIONS:

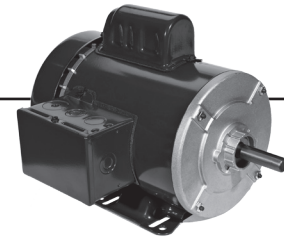
For air compressors, commercial duty pumps, conveyors, blowers and general industrial equipment.

### FEATURES:

- Class B Insulation
- 104 °F (40 °C) Ambient Design
- Double Shielded Ball Bearings
- Reversible Rotation

HP	Volts	RPM	Catalog Number	Amps	Thermal Protector	Frame	Marathon Motor	Cross Reference
1/3	115/230	1725	D13CP2PCR	3.8/1.9	None	56C	G230	L, W, B, C, G
	115/230&110/220	1725&1425	D13CPA2PCR	3.9/1.9	Auto	56C	C356	
1/2	115/230	1725	D12CP2PCR	5.0/2.6	None	56C	G234	L, C, G
		1725	D12CPA2PCR	5.0/2.6	Auto	56C	C359	
3/4	115/230	1725	D34CP2PCR	7.0/3.5	None	56C	G250	L, W, B, C, G
		1725	D34CPA2PCR	7.0/3.5	Auto	56C	CG362	
1	115/230	1725	D1CP2PCR	8.8/4.4	None	56C	G256	L, B, G
		1725	D1CPA2PCR	8.8/4.4	Auto	56C	CG363	
1 1/2	115/230	1725	D32CP2PCR	13.4/6.7	None	56C	G270	L, W, B, C, G
2	115/230	1725	D2CP2PCR	17.0/8.5	None	56C	G274	L, C

## General Purpose Capacitor Start Motors Rigid Base, Totally Enclosed Fan Cooled



### APPLICATIONS:

For air compressors, commercial duty pumps, conveyors, blowers and general industrial equipment.

### FEATURES:

- Class B Insulation
- 104 °F (40 °C) Ambient Design
- Double Shielded Ball Bearings
- Reversible Rotation

HP	Volts	RPM	Catalog Number	Amps	Thermal Protector	Frame	Marathon Motor	Cross Reference
1/3	115/208-230	1725	T13C2J	6.6/2.9-3.3	None	56	G1330	G
		1725	T13CM2J	6.6/3.0-3.3	Manual	56	G332	L, B, C, G
1/2	115/208-230	1725	T12C2J	9.0/4.3-4.5	None	56	C261	G
		1725	T12CM2J	9.0/4.3-4.5	Manual	56	G339	L, B, C, G
3/4	115/208-230	3450	T34C1J	10.4/5.3-5.2	None	56	G352	L, B, C, G
		1725	T34C2J	11.4/5.7-5.7	None	56	C268	G
		1725	T34CM2J	11.4/5.7-5.7	Manual	56	G356	L, B, C, G
1	115/208-230	3450	T1C1J	13.6/6.9-6.8	None	56	G359	L, B, C, G
		1725	T1C2JH	14.0/6.9-7.0	None	56H	C275	G
		1725	T1CM2JH	14.0/6.9-7.0	Manual	56H	G373	L, B, C, G
3	115/230	1740	T3C2P18	30.0/15.0	None	184T	I213	L, W, B, C, G

### Cross-Reference Key

L = Leeson    W = WEG    B = Baldor    C = Century    G = Grainger

\*Catalog numbers for all competitor products in cross-reference column and key are listed in back Cross Reference section.

† All marks shown within this document are properties of their respective owners.



16-8400-01

# General Purpose Capacitor Start Motors

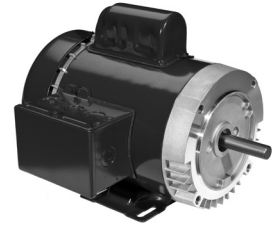
## C-Face, Totally Enclosed Fan Cooled

### APPLICATIONS:

For air compressors, commercial duty pumps, conveyors, blowers and general industrial equipment.

### FEATURES:

- Class B Insulation
- 104 °F (40 °C) Ambient Design
- Double Shielded Ball Bearings
- Reversible Rotation



### Footed

HP	Volts	RPM	Catalog Number	Frame	Amps	Marathon Motor	Cross Reference
1/4	115/208-230	1140	T14C3JC	56C	6.4/3.0-3.2	G577	
1/3	115/208-230	1725	T13C2JC	56C	6.6/3-3.3	G570 & C1405	B, G
		1140	T13C3JC	56C	6.8/3.4	G576	
1/2	115/208-230	1725	T12C2JC	56C	9.0/4.3-4.5	G571	B, G
	115/208-230 & 110/220	1140/950	T12C3ZC	56C	10.4/5.1-5.2 & 9.7/4.8	G578	
3/4	115/208-230	1725	T34C2JC	56C	11.4/5.7-5.7	G572 & C1425	B, G
1	115/208-230	1725	T1C2JHC	56C	14.0/6.9-7.0	G573 & C376	G



### Footless

HP	Volts	RPM	Catalog Number	Frame	Amps	Marathon Motor	Cross Reference
1/4	115/208-230	1725	T14C2JCR	56C	6.5/2.8-3.2	G1511	B, G
		1140	T14C3JCR	56C	6.4/3.0-3.2	C1423	
1/2	115/208-230	1725	T12C2JCR	56C	9.0/4.3-4.5	G1515	C, G
3/4	115/208-230	1725	T34C2JCR	56C	11.4/5.7-5.7	G1517	B, C
1	115/208-230	3450	T1CA1JCR	56C	13.6/6.9-6.8	C351	
		1725	T1C2JCR	56C	14.0/6.9-7.0	G1519	C, G
1 1/2	115/208-230	3450	T32CA1JCR	56C	14.6/8.1-7.4	C855	G
		1725	T32C2JCR	56C	14.4/8.0-7.2	G1531	B, C, G
2	115/208-230	3450	T2C1J14CR	56C	19.5/10.8-9.7	G533	L, W, B, C, G

### Cross-Reference Key

L = Leeson    W = WEG    B = Baldor    C = Century    G = Grainger

\*Catalog numbers for all competitor products in cross-reference column and key are listed in back Cross Reference section.

† All marks shown within this document are properties of their respective owners.

16-8400-01



## General Purpose Capacitor Start - Capacitor Run Motors Rigid Base, Open Drip-Proof



### APPLICATIONS:

For air compressors, pumps, conveyors, blowers and general industrial equipment.

### FEATURES:

- Class B Insulation
- 104 °F (40 °C) Ambient Design
- Double Shielded Ball Bearings
- Reversible Rotation

HP	Volts	RPM	Catalog Number	Amps	Thermal Protector	Frame Size	Marathon Motor	Cross Reference
1/4	115/230	1725	D14CPA2P4	3.1/1.5	Auto	48	C148	G
1/3	115/230 & 110/220	1725/1425	D13CP2P	3.9/1.9 & 4.8/2.5	None	56	C158	
2	115/208-230	1725	D2C2J14	20.0/11.3-10.0	None	145T	C193	C
		1725	D2CA2J14	20.0/11.3-10.0	Auto	145T	CG381	

### Cross-Reference Key

L = Leeson    W = WEG    B = Baldor    C = Century    G = Grainger

\*Catalog numbers for all competitor products in cross-reference column and key are listed in back Cross Reference section.

† All marks shown within this document are properties of their respective owners.



16-8400-01

# General Purpose Capacitor Start - Capacitor Run Motors

## Rigid Base, Totally Enclosed Fan Cooled



### APPLICATIONS:

For air compressors, pumps, conveyors, blowers and general industrial equipment.

### FEATURES:

- Class B Insulation
- 104 °F (40 °C) Ambient Design
- Double Shielded Ball Bearings
- Reversible Rotation

HP	Volts	RPM	Catalog Number	Amps	Thermal Protector	Frame Size	Marathon Motor	Cross Reference
1/3	115/208-230	1725	T13C2J	6.6/2.9-3.3	None	56	G1330	G
		1725	T13CM2J	6.6/3.0-3.3	Manual	56	G332	L, B, C, G
		1140	T13C3J	6.8/3.4-3.4	None	56	C1333	G
1/2	115/208-230	3450	T12CM1J	8.0/3.8-4.0	Manual	56	G393	L, G
		1725	T12CA2J	9.0/4.3-4.5	Auto	56	C262	G
		1725	T12CM2J	9.0/4.3-4.5	Manual	56	G339	L, B, C, G
		1725	T12C2J	9.0/4.3-4.5	None	56	C261	G
		1140	T12C3J	10.4/5.1-5.2	None	56	C264	G
		3450	T12C3J	10.4/5.1-5.2	None	56	C264	G
3/4	115/208-230	3450	T34C1J	10.4/5.3-5.2	None	56	G352	L, W, B, C, G
		3450	T34CM1J	10.4/5.3-5.2	Manual	56	G379	L, G
		1725 & 1425	T34C2Z	9.2-8.4/4.6-4.2	None	56	EG276	
		1725	T34C2J	11.4/5.7-5.7	None	56	C268	G
		1725	T34CA2J	11.4/5.7-5.7	Auto	56	C269	G
		1725	T34CM2J	11.4/5.7-5.7	Manual	56	G356	L, B, C, G
		1140	T34C3JH	10.6/5.4-5.3	None	56H	C271	
		1140	T34C3JH	10.6/5.4-5.3	None	56H	C271	
1	115/208-230	3450	T1C1J	13.6/6.9-6.8	None	56	G359	L, B, C, G
		3450	T1CA1J	13.6/6.9-6.8	Auto	56	C273	G
		3450	T1CM1J	13.6/6.9-6.8	Manual	56	G390	L, B, C, G
		1725 & 1425	T1C2Z	11.0-9.2/5.5-4.7	None	56	E285	L, W, B, C, G
		1725	T1C2JH	14.0/6.9-7.0	None	56H	C275	G
		1725	T1CA2JH	14.0/6.9-7.0	Auto	56H	C276	L, G
		1725	T1CM2JH	14.0/6.9-7.0	Manual	56H	G373	L, B, C, G
		1725	T1CM2JH	14.0/6.9-7.0	Manual	56H	G373	L, B, C, G
1 1/2	115/208-230	3450	T32CM1JH	14.6/8.1-7.4	Manual	56H	G391	L, B, C, G
		3450	T32C1JH	14.6/8.1-7.4	None	56H	G374	L, B, C, G
		3450	T32C1J14	14.6/8.1-7.4	None	143T	I220	L, B, G
		1725	T32C2JH	14.4/8.0-7.2	None	56H	G1376	C, G
		1725	T32CA2JH	14.4/8.0-7.2	Auto	56H	G1377	C, G
		1725	T32CM2JH	14.4/8.0-7.2	Manual	56H	G378	L, G
		1725	T32C2J14	14.4/8.0-7.2	None	145T	C297	C, G
		1725	T32C2J14	14.4/8.0-7.2	None	145T	C297	C, G
2	115/208-230	3450	T2CM1JH	19.5/10.8-9.7	Manual	56H	G1392	C, G
		3450	T2C1JH	19.5/10.8-9.7	None	56H	K350	L, W, B, C, G
		3450	T2C1J14	19.5/10.8-9.7	None	145T	I221	G
		1725	T2C2J14	18.9/10.3-9.4	None	145T	I700	L
		1740	T2C2P18	11.8	None	182T	I212	L, B, C, G
		1725	T2CM2J14	18.9/10.3-9.4	Manual	145T	I702	
3	115/230	3500	T3C1P18	16	None	182T	I206	G
5	230	3500	T5C1K18	19.6	None	184T	I223A	C, G
		1725	T5C2K21	23	None	213T	I216	G

### Cross-Reference Key

L = Leeson    W = WEG    B = Baldor    C = Century    G = Grainger

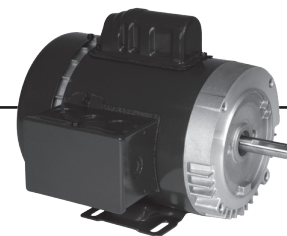
\*Catalog numbers for all competitor products in cross-reference column and key are listed in back Cross Reference section.

† All marks shown within this document are properties of their respective owners.



16-8400-01

## General Purpose Capacitor Start - Capacitor Run Motors 56 Frame, C-Face Footed, Totally Enclosed Fan Cooled



### APPLICATIONS:

For air compressors, pumps, conveyors, blowers and general industrial equipment.

### FEATURES:

- Class B Insulation
- 104 °F (40 °C) Ambient Design
- Double Shielded Ball Bearings
- Reversible Rotation

HP	Volts	RPM	Catalog Number	Amps	Mounting	Marathon Motor	Cross Reference
3/4	115/208-230	1140	T34C3JC	10.6/5.4-5.3	C-FACE/BASE	G579	
1 1/2	115/208-230	1725	T32C2JHC	14.4/8.0-7.2	C-FACE/BASE	G574	G
2	115/208-230	1725	T2C2JHC	18.9/10.3-9.4	C-FACE/BASE	G575	G

## General Purpose Single Phase Hazardous Location Motors Rigid Base, Class 1 (Group C & D), Class II (Group E, F & G)



### APPLICATIONS:

For use on air compressors, pumps, conveyors, blowers and general industrial equipment located in hazardous areas.

### FEATURES:

- UL<sup>®</sup>† Listed & CSA<sup>®</sup>† Certified
- 104 °F (40 °C) Ambient Design
- Temperature Code T3C
- Class B Insulation
- Continuous Duty

HP	Volts	RPM	Catalog Number	Amps	Enclosure	Marathon Motor	Cross Reference
1/4	115/208-230 & 110/220	1725	XS14CA2J	5.1/2.5-2.5&5.6/2.8	TENV	G639	C, G
1/3	115/208-230	1725	XS13CA2J	6.8/3.3-3.4	TEFC	G651	L, B, G
1/2	115/208-230	1725	XS12CA2J	9.8/4.9-4.9	TEFC	G654	L, B, G
3/4	115/208-230	1725	XS34CA2J	12.6/6.3-6.3	TEFC	G657	L, B, G

### Cross-Reference Key

L = Leeson    W = WEG    B = Baldor    C = Century    G = Grainger

\*Catalog numbers for all competitor products in cross-reference column and key are listed in back Cross Reference section.

† All marks shown within this document are properties of their respective owners.



16-8400-01



# General Purpose Three Phase Motors

## Rigid Base, Open Drip-Proof



### APPLICATIONS:

For air compressors, pumps, conveyors, blowers and general industrial equipment.

### FEATURES:

- Double Shielded Ball Bearings
- 104 °F (40 °C) Ambient Design
- Reversible Rotation
- Premium efficient

HP	Volts	RPM	Catalog Number	Amps	Frame Size	Marathon Motor	Cross Reference
1/4	208-230/460	1725	D14P2B4	1.3-1.3/1.7	48	G044	
1/3	208-230/460	1725&1425	D13P2AH	1.4-1.4/0.7	56H	G047	L, W, B, C
1/2	208-230/460	1725	D12P2AH	1.99-1.9/0.98	56H	G063 & K116	L, W, B, C, G
3/4	208-230/460	1725	D34P2AH	2.8-3.2/1.6	56	G084 & K119	L, W, B, C, G
1	208-230/460	1725	D1P2AH	3.2-3.0/1.5	56H	K004 & K122	
1 1/2	208-230/460	1725&1425	D32P2AH	5.0-4.8/2.4	56H	K022	
	208-230/460 & 190/380	1725	D32P2D	4.4-4.2/2.1	145T	U759	C
2	208-230/460 & 190/380	1725	D2P2D	5.9-5.6/2.8	145T	U760	C
15	208-230/460 & 190/380	1725	D15P2D	40-36/18.2	254T	GT0022	C

### Cross-Reference Key

L = Leeson    W = WEG    B = Baldor    C = Century    G = Grainger

\*Catalog numbers for all competitor products in cross-reference column and key are listed in back Cross Reference section.

† All marks shown within this document are properties of their respective owners.



16-8400-01

## General Purpose Three Phase Motors Rigid Base, Totally Enclosed Fan Cooled



### APPLICATIONS:

For air compressors, pumps, conveyors, blowers and general industrial equipment.

### FEATURES:

- Double Shielded Ball Bearings
- 104 °F (40 °C) Ambient Design
- Reversible Rotation

HP	Volts	RPM	Catalog Number	Amps	Frame Size	Marathon Motor	Cross Reference
1/4	208-230/460	1140	T14S3A	1.4-1.5/.76	56	K321	G
1/3	208-230/460	3450	T13S1A4	1.2/0.6	48	K153	
		1725	T13S2A	1.3-1.3/0.6	56	K154	G
1/2	208-220/440	3450	T12S1A	2.0-2.0/1.0	56	G308	G
		1725	T12S2A	1.8-1.8/0.9	56	K158	C, G
3/4	208-230/460	3450	T34S1A	2.5-2.5/1.2	56	G080 & K160	L, W, B, C, G
		1725	T34S2A	3.0-3.0/1.5	56	K161	C, G
		1140	T34S3AH	3.1-3.2/1.6	56H	K162	G
1	208-230/460	3450	T1P1A	3.4-3.2/1.6	56	K163	
		1725	T1P2AH	3.3-3.2/1.5	56H	G347 & K164	L, B, C, G
		1140	T1S3A	3.7-3.8/1.9	56H	K165	C, G
1 1/2	208-230/460	3600	T32P1AH	4.9-5.0/2.5	56H	K166	
1 1/2	208-230/460	1725	T32P2AH	4.5-4.5/2.2	56H	K167	G
3	208-230/460 & 190/380	1725	U3P2D	8.4-7.8/3.9	182T	E2110	G
5	208-230/460 & 190/380	1725	U5P2D	13.6-12.3/6.2	184T	E2113	C, G
7	208-230/460 & 190/380	1725	U7P2D	20-18.2/9.1	213T	E2116	G
10	208-230/460 & 190/380	1725	U10P2D	26.5-23.9/12	215T	E2119	G

### Cross-Reference Key

L = Leeson    W = WEG    B = Baldor    C = Century    G = Grainger

\*Catalog numbers for all competitor products in cross-reference column and key are listed in back Cross Reference section.

† All marks shown within this document are properties of their respective owners.



## General Purpose Three Phase Motors Steel Frame, C-Face, Totally Enclosed Fan Cooled

### APPLICATIONS:

For air compressors, pumps, conveyors, blowers and general industrial equipment.

### FEATURES:

- Double Shielded Ball Bearings
- 104 °F (40 °C) Ambient Design
- Reversible Rotation
- Class F Insulation, Class B Rise At Full Load On 60 Hertz Sine Wave Power



### FOOTED

HP	Volts	RPM	Catalog Number	Amps	Frame	Marathon Motor	Cross Reference
1/3	208-230/460 & 190/380	1745	U13S2AC	1.4-1.5/0.7	56C	K1322, G580	
1/2	208-230/460	1745	U12S2AC	1.8-1.8/0.9	56C	G581 & K1324	L, B, C, G
3/4	208-230/460	1750	U34S2AC	2.7-2.7/1.4	56C	G582 & K258	L, B, C, G
1	208-230/460	1750	U1P2DFC	3.3-3.4/1.7	56C	G583 & K259	L, B, C, G
1 1/2	208-230/460	1735	U32P2DFC	4.7-4.7/2.3	56C	G584 & K260	L, B, C, G
2	208-230/460	1730	U2P2DFC	6.2-6.3/3.2	56C	G585	B, G



### FOOTLESS

HP	Volts	RPM	Catalog Number	Amps	Frame	Marathon Motor	Cross Reference
1/4	208-230/460 & 190/380	1750	U14S2DCR	1-1/0.5	56C	K252	G
1/3	208-230/460	1750	U13S2ACR	1.2-1.2/0.6	56C	K253	C, G
1/2	208-230/460	1745	U12S2ACR	1.8-1.7/0.9	56C	K254	C, G
3/4	208-230/460	1750	U34S2ACR	2.6-2.7/1.3	56C	K255	C, G
1	208-230/460	1750	U1P2DFCR	3.0-3.1/1.5	56C	K256	C, G
1 1/2	208-230/460 & 190/380	1730	U32P2DFCR	4.3-4.5/2.1	56C	K257	C, G

## General Purpose Three Phase Motor Hostile Duty, NEMA Premium Efficient, Totally Enclosed Fan Cooled

### APPLICATIONS:

For pulp and paper plant, saw mills, mines, foundries, chemical plants, waste management facilities, and other process-related industries requiring protection within harsh operating conditions.

### FEATURES:

- Double Shielded Ball Bearings
- 104 °F (40 °C) Ambient Design
- Class F Insulation
- Reversible Rotation
- Cast iron Frame
- Shaft Slinger On Pulley End



HP	Volts	RPM	Catalog Number	Amps	Frame	Marathon Motor	Cross Reference
15	208-230/460	1775	H15P2D	40-36/18.2	254T	E205	L, W, B, C, G

### Cross-Reference Key

L = Leeson    W = WEG    B = Baldor    C = Century    G = Grainger

\*Catalog numbers for all competitor products in cross-reference column and key are listed in back Cross Reference section.

† All marks shown within this document are properties of their respective owners.

16-8400-01

# General Purpose Three Phase Motors

## Rigid Base, Class I (Group D), Class II (Group E, F & G)



### APPLICATIONS:

For pumps, fans, compressors, conveyors and tools located in hazardous locations as defined by Class and Group.

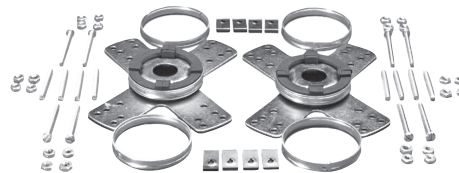
### FEATURES:

- T3B Temp Code
- UL<sup>®†</sup> Listed & CSA<sup>®†</sup> Certified
- 104 °F (40 °C) Ambient Design
- Ball Bearings
- Aluminum End Brackets & Conduit Box

HP	Volts	RPM	Catalog Number	Amps	Frame	Marathon Motor	Cross Reference
1/2	208-230/460	1725	XS12SA2D	2.0-1.9/1.0	56	G649	G
3/4	208-230/460	1725	XS34SA2A	2.8-2.9/1.4	56	G661	L, B, C, G

### ACCESSORIES

U.S. MOTORS	Description	Marathon Motor	Cross Reference
KIT 27	Hub Length adapter set (2-1/4" resilient mounting rings to convert to 2-1/2" rings) fits 5.0" and 5.6" diameter motors.	MA111	



### Cross-Reference Key

L = Leeson    W = WEG    B = Baldor    C = Century    G = Grainger

\*Catalog numbers for all competitor products in cross-reference column and key are listed in back Cross Reference section.

† All marks shown within this document are properties of their respective owners.



## Cross Reference

Find the brand and number of the motor you are replacing in the chart below. Match it to the U.S. Motor number. Use the U.S. Motor catalog number when selecting your quality replacement motor.

Marathon Motor	U.S. MOTORS	Page
4304	D16B2N4Z9	8
4306	3618	4
4351	D14B2N4Z	8
4355	D14B2N49	8
4369	D13B2N4A9	8
4377	D13B2NZA9	8
4392	1369	4
4396	D13B10N49	8
4406	1003	5
4422	D34B2N9	8
4688	D1CPA2PH9	10
4701	8000	4
4706	8100	4
4708	8200	4
4725	1004	5
4730	8000	4
4731	8100	4
4732	8200	4
4777	3274	2
4805	6079	5
B206	8000	4
B207	8100	4
B208	8200	4
B300	D16B2N4Z9	8
B302	D14B2N49	8
B303	8000	4
B304	D13B2N4Z9	8
B305	8100	4
B306	D12B2N4Z9	8
B307	8200	4
B310	D1CP2PH9	10
B313	D14CPA2P49	10
B315	180	4
B316	D12CP2PH9	10
B317	D12CPA2PH9	10
B318	D34CP2PH9	10
B319	1893	10
B322	D16BA2N4Z9	8
B400	8100	4
B402	1411	8
B1316	D12CP2PH9	10
C133	D12CPA2P49	10
C147	D14CP2P4	11
C148	D14CPA2P4	14
C153	D13CP2P4	11
C154	D13CPA2Z4	11
C158	D13CP2P	14
C167	D12CP2P	11
C168	D12CPA2P	11
C169	D12CPM2PH	11
C175	D34CP2PH	11
C176	D34CPA2PH	11
C179	D1CP1PH	11
C180	D1CP1PH	11
C181	D1CP2PH	11
C182	D1CPA2PH	11
C185	D32CP2PH	11
C186	D32CPA2PH	11
C187	D2CP1PH	11
C188	D1C2J14	11
C191	D32C2J14	11

Marathon Motor	U.S. MOTORS	Page
C193	D2C2J14	14
C208	D13CPA1P49	10
C209	D13CP2Z49	10
C210	180	4
C215	D13CP2PH9	10
C216	D13CPA2P9	10
C219	D12C1P4Z9	10
C235	D1CP2PH9	10
C261	T12C2J	12
C261	T12C2J	15
C262	T12CA2J	15
C264	T12C3J	15
C268	T34C2J	12
C268	T34C2J	15
C269	T34CA2J	15
C271	T34C3JH	15
C273	T1CA1J	15
C275	T1C2JH	12
C275	T1C2JH	15
C276	T1CA2JH	15
C297	T32C2J14	15
C351	T1CA1JCR	13
C356	D13CPA2PCR	12
C359	D12CPA2PCR	12
C376	T1C2JHC	13
C420	6311	10
C548	D13CPA3P9	10
C855	T32CA1JCR	13
C1158	D1CPA2PH9	10
C1160	D32CPA2PH9	10
C1333	T13C3J	15
C1405	T13C2JC	13
C1423	T14C3JCR	13
C1425	T34C2JC	13
C1474	D34CPM1PH	11
C1475	D34CPM1PH	11
C1477	D32CPM1PH	11
C1480	D1CPM2PH	11
CG223	D12CPA2PH9	10
CG230	D34CP2PH9	10
CG236	D1CPA2PH9	10
CG239	D32CPA2PH9	10
CG362	D34CPA2PCR	12
CG363	D1CPA2PCR	12
CG381	D2CA2J14	14
D107	3615	4
D111	D12CPA2PH9	10
D115	D32CPA1PH9	10
D119	D13CPA2P49	10
D149	4114	4
D163	PD6006	4
D1113	D34CPA2PH9	10
E205	H15P2D	19
E285	T1C2Z	15
E2110	U3P2D	18
E2113	U5P2D	18
E2116	U7P2D	18
E2119	U10P2D	18
EG276	T34C2Z	15
G044	D14P2B4	17
G047	D13P2AH	17

Marathon Motor	U.S. MOTORS	Page
G063	D12P2AH	17
G078	D14CPM2P4	11
G080	T34S1A	18
G084	D34P2AH	17
G095	D13CPM2P	11
G230	D13CP2PCR	12
G234	D12CP2PCR	12
G250	D34CP2PCR	12
G256	D1CP2PCR	12
G270	D32CP2PCR	12
G274	D2CP2PCR	12
G308	T12S1A	18
G332	T13CM2J	12
G332	T13CM2J	15
G339	T12CM2J	12
G339	T12CM2J	15
G347	T1S2AH	18
G352	T34C1J	12
G352	T34C1J	15
G356	T34CM2J	12
G356	T34CM2J	15
G359	T1C1J	12
G359	T1C1J	15
G373	T1CM2JH	12
G373	T1CM2JH	15
G374	T32C1JH	15
G378	T32CM2JH	15
G379	T34CM1J	15
G390	T1CM1J	15
G391	T32CM1JH	15
G393	T12CM1J	15
G533	T2C1J14CR	13
G570	T13C2JC	13
G571	T12C2JC	13
G572	T34C2JC	13
G573	T1C2JHC	13
G574	T32C2JHC	16
G575	T2C2JHC	16
G576	T13C3JC	13
G577	T14C3JC	13
G578	T12C3ZC	13
G579	T34C3JC	16
G580	U13S2AC	19
G581	U12S2AC	19
G582	U34S2AC	19
G583	U1P2DFC	19
G584	U32P2DFC	19
G585	U2P2DFC	19
G639	XS14CA2J	16
G649	XS12SA2D	20
G651	XS13CA2J	16
G654	XS12CA2J	16
G657	XS34CA2J	16
G661	XS34SA2A	20
G915	D34CP1PH	11
G919	D34CPM2PH	11
G923	1814P	6
G937	D32CP1PH	11
G1114	D14CP2P49	10
G1115	D14CPA2P49	10
G1330	T13C2J	12

† All marks shown within this document are properties of their respective owners.



## Cross Reference

Find the brand and number of the motor you are replacing in the chart below. Match it to the U.S. Motor number. Use the U.S. Motor catalog number when selecting your quality replacement motor.

Marathon Motor	U.S. MOTORS	Page
G1330	T13C2J	15
G1376	T32C2JH	15
G1377	T32CA2JH	15
G1392	T2CM1JH	15
G1511	T14C2JCR	13
G1515	T12C2JCR	13
G1517	T34C2JCR	13
G1519	T1C2JCR	13
G1531	T32C2JCR	13
GT0022	D15P2D	17
H160	D14B2N49	8
H162	D14B3N9	8
H164	D13B2N4Z9	8
H167	PD6004	4
H168	D13B3P9	8
H171	D14B10N4Z9	8
H173	1364	8
H174	D13BA10N9	8
H175	3306	8
H176	4293	4
H204	D0112B3NCR	9
H214	D14B3NCR	9
H223	D14B10NCR	9
H225	D13B10NCR	9
H226	D12B10NCR	9
H239	D14B2N4Z	8
H286	D12B2NA9	8
H290	D12B2NCR	9
H684	6078	5
H901	D14B2N4Z	8
HG156	D16B2N4Z9	8
HG695	D16B3N4Z9	8
I103A	D3C1P18	11
I104A	D5C1K18	11
I105	D7C1K21	11
I113A	D3C2P18	11
I114A	D5C2K18	11
I115	D7C2K21	11
I116	D10C2K21	11
I206	T3C1P18	15
I212	T2C2P18	15
I213	T3C2P18	12
I216	T5C2K21	15
I217	FDU10CM2K21	6
I220	T32C1J14	15
I221	T2C1J14	15
I223A	T5C1K18	15
I700	T2C2J14	15
I702	T2CM2J14	15
K004	D1P2AH	17
K022	D32P2AH	17
K116	D12P2AH	17
K119	D34P2AH	17
K122	D1P2AH	17
K153	T13S1A4	18
K154	T13S2A	18
K158	T12S2A	18
K160	T34S1A	18
K161	T34S2A	18
K162	T34S3AH	18
K163	T1P1A	18

Marathon Motor	U.S. MOTORS	Page
K164	T1P2AH	18
K165	T1S3A	18
K166	T32P1AH	18
K167	T32P2AH	18
K252	U14S2DCR	19
K253	U13S2ACR	19
K254	U12S2ACR	19
K255	U34S2ACR	19
K256	U1P2DFCR	19
K257	U32P2DFCR	19
K258	U34S2AC	19
K259	U1P2DFC	19
K260	U32P2DFC	19
K321	T14S3A	18
K350	T2C1JH	15
K1322	U13S2AC	19
K1324	U12S2AC	19
MA111	KIT 27	20
O004	2302	5
O100	3083	5
O600	3196	5
O601	3252	5
P190	8431	3
S003	D14B2N4Z	8
S006	D13B2N4A	8
S010	D13CP2P4	11
S012	D12CP2P	11
S013	D12CPA2P	11
S014	D34CP2PH	11
S015	D34CPA2PH	11
S022	1366	8
S037	D1CP2PH	11
S038	D1CPA2PH	11
S102	D14B2N49	8
S106	D13B2N4A9	8
S110	D13CP2Z49	10
S111	D13CPA2P49	10
S112	D12CP2PH9	10
S113	D12CPA2PH9	10
S114	D34CP2PH9	10
S115	1660	10
S116	D1CP2PH9	10
S117	D1CPA2PH9	10
S118	D14CP2P49	10
S119	D14CPA2P49	10
S120	D12B2NA9	8
S126	8000	4
S127	8100	4
S128	8200	4
U759	D32P2D	17
U760	D2P2D	17
X000	1863	1
X002	1864	1
X003	1972	1
X004	1865	1
X005	1973	1
X009	8904	1
X010	8905	1
X011	1693	1
X012	1355	3
X013	1690	1

Marathon Motor	U.S. MOTORS	Page
X014	1394	1
X015	1692	1
X016	1694	1
X017	1695	1
X042	NAL1016	2
X043	NA1016	2
X045	NA1036	2
X048	NAL1016	2
X049	NA1016	2
X052	NA1036	2
X082	8670	3
X083	8670	3
X086	8667	3
X087	3851	3
X088	6880	3
X090	8665	3
X096	3852	3
X097	8666	3
X098	7041	3
X203	3330	3
X211	1700	1
X213	3851	3
X214	6880	3
X221	3852	3
X222	1354	3
X258	NA1036	2
X297	5455	3
X298	3097	3
X301	1385	2
X302	1386	2
X303	1384	2
X304	1388	2
X400	3738	3
X412	1876	3
X413	1877	3
X414	1878	3
X448	8431	3
X466	1891	3
X467	1890	3
X468	1892	3
X469	1879	3
X470	8230	3
X471	1404	1
X473	1405	1
X474	1408	1
X475	1402	1
X476	1407	1
X477	1406	1
X501	1817H	7
X502	1818H	7
X503	1819H	7
X507	1828H	7
X509	8987H	7
X513	1820H	7
X523	1821H	7
X525	1822H	7
X528	1833H	7
X530	1832H	7
X531	1831H	7
X1001	1971	1
Z113A	FDU3CM2K18	6

† All marks shown within this document are properties of their respective owners.



## Cross Reference

Find the brand and number of the motor you are replacing in the chart below. Match it to the U.S. Motor number. Use the U.S. Motor catalog number when selecting your quality replacement motor.

Marathon Motor	U.S. MOTORS	Page
Z114	FDU5CM2K18	6
Z115	FDU7CM2K21Z	6
Z116	FDU10CM2K21	6
Z117	FDU5CM2K21Z	6
Z118	FD32CM2P14	6
Z123	FD1CM2P14	6

Leeson	U.S. MOTORS	Page
100002.00	D12CPA2P	11
100003.00	D2CP1PH	11
100005.00	D34CPM2PH	11
100007.00	D12CP2P	11
100008.00	D34CP2PH	11
100011.00	D12CPA2P49	10
100012.00	1893	10
100014.00	D13CP2Z49	10
100015.00	D12CP2PH9	10
100016.00	D34CP2PH9	10
100024.00	D13CP2PCR	12
100025.00	D12CP2PCR	12
100026.00	D34CP2PCR	12
100028.00	D13P2AH	17
100029.00	D12P2AH	17
100030.00	D34P2AH	17
100064.00	D12CPA2P49	10
100065.00	1660	10
100110.00	180	4
100111.00	D14CPA2P49	10
100340.00	D34CP1PH	11
100588.00	D13CPM2P	11
100600.00	D13B10N49	8
100601.00	D12B2NCR	9
101015.00	D13CPA2P49	10
101423.00	D14CPM2P4	11
102868.00	D13CP2P4	11
110000.00	D1CPA2PH	11
110002.00	6311	10
110004.00	D1CP2PH	11
110021.00	T12CM2J	12
110021.00	T12CM2J	15
110022.00	T34CM2J	12
110022.00	T34CM2J	15
110023.00	T1CM2JH	12
110023.00	T1CM2JH	15
110035.00	T1P2AH	18
110054.00	D1CPA2PH9	10
110059.00	T1C1J	12
110059.00	T1C1J	15
110094.00	T32C1JH	15
110108.00	T34CM1J	15
110109.00	T32CM1JH	15
110141.00	T12CM1J	15
110142.00	T1CM1J	15
110220.00	D1CP2PCR	12
110276.00	T34C1J	12
110276.00	T34C1J	15
110313.00	T34S1A	18
110352.00	T2C1JH	15
110361.00	D32CP1PH	11
110388.00	D32CP2PCR	12
110422.00	T2C1J14CR	13
110430.00	1814P	6
110912.00	U1P2DFC	19
110916.00	U34S2AC	19
110918.00	U32P2DFC	19
110934.00	XS34CA2J	16
111074.00	XS13CA2J	16
111084.00	XS12CA2J	16
111923.00	XS34SA2A	20

Leeson	U.S. MOTORS	Page
112136.00	D2CP2PCR	12
113027.00	D1CP2PH9	10
113281.00	D13CP2PH9	10
113333.00	T32CM2JH	15
114140.00	U12S2AC	19
114619.00	T13CM2J	12
114619.00	T13CM2J	15
115778.00	1820H	7
115779.00	1821H	7
116773.00	1817H	7
120130.00	T32C1J14	15
120824.00	T1CA2JH	15
120867.00	T2C2J14	15
120923.00	D14C2P4Z9	10
121569.00	FD1CM2P14	6
131509.00	T2C2P18	15
131533.00	T3C2P18	12
131576.00	T1C2Z	15
131636.00	D3C1P18	11
140155.00	D7C2K21	11
140209.00	FDU7CM2K21Z	6
140223.00	FDU5CM2K21Z	6
140311.00	D10C2K21	11
140414.00	FDU10CM2K21	6
140581.00	FDU10CM2K21	6
140680.00	D7C1K21	11
140766.00	D13CPA2Z4	11
170066.62	H15P2D	19





## Cross Reference

Find the brand and number of the motor you are replacing in the chart below. Match it to the U.S. Motor number. Use the U.S. Motor catalog number when selecting your quality replacement motor.

WEG	U.S. MOTORS	Page
.3318OS1BC56	D13CP2P4	11
.3318OS1BC56	D13B2N4A	8
.3318OS1BC56CFL	D13CP2PCR	12
.3318OS3EA56	D13P2AH	17
.5018OS1BC56	1366	8
.5018OS1BC56	D12CP2P	11
.5018OS3EA56	D12P2AH	17
.5036OS3EA56C	D13B10N49	8
.7518OS1BD56	D34CP2PH	11
.7518OS3EB56	D34P2AH	17
.7536ES1BB56	T34C1J	15
.7536OS3EB56	T34S1A	18
0.7518OS1BD56CFL	D34CP2PCR	12
0.7536OS1BB56	D34CP1PH	11
00118OS1BD56	D1CP2PH	11
00156OS1BD56	D32CP1PH	11
00158OS1BF56CFL	D32CP2PCR	12
00236ES1BF56	T2C1JH	15
00236ES1BF56CFL	T2C1J14CR	13
00318ES1E184T	T3C2P18	12
00336OS1D182T	D3C1P18	11
00518ES1DFD215T	FDU5CM2K21Z	6
00718OS1CCD215T	D7C2K21	11
00736OS1C184T	D7C1K21	11
00736OS3E184JM	T1C2Z	15
01018ES1DFD215T	FDU10CM2K21	6
01518ET3E254T	H15P2D	19
L1319T	D32C2J14	11

Baldor	U.S. MOTORS	Page
C56H1545	T34C2JC	13
C56H1546	T12C2JC	13
C56H1589	T34C2JCR	13
C56H3138	T13C2JC	13
CFM3146A	1817H	7
CM3107	D13B10N49	8
CM3108	D12B2NCR	9
CM3538	U12S2AC	19
CM3542	U34S2AC	19
CM3546	6078	5
CM3546	U1P2DFC	19
CM3554	U32P2DFC	19
CM3558	U2P2DFC	19
ECP3587T-4	D14C2P4Z9	10
EM2333T	H15P2D	19
FDL3510TM	FD1CM2P14	6
FDL3514TM	FD32CM2P14	6
FDL3610TM	FDU3CM2K18	6
FDL3612TM	FDU5CM2K18	6
FDL3731M	FDU5CM2K21Z	6
FDL3732M	FDU7CM2K21Z	6
FDL3737TM	FDU10CM2K21	6
JMM3219T	T1C2Z	15
KL3500	T14C2JCR	13
L1203M	D14CPM2P4	11
L1206-50	D13CP2Z49	10
L1301	D13CP2P	14
L1301M	D13CPM2P	11
L1304	D12CP2P	11
L1304A	D12CPA2P	11
L1305	6311	10
L1306	D34CP1PH	11
L1307	D34CP2PH	11
L1307A	D34CPA2PH	11
L1307M	D34CPM2PH	11
L1309	D1CP1PH	11
L1310	D1CP2PH	11
L1313	D32CP1PH	11
L1406T	D3C1P18	11
L1509T	D7C1K21	11
L1510T	D7C2K21	11
L1512T	D10C2K21	11
L3501M	T13CM2J	12
L3501M	T13CM2J	15
L3504M	T12CM2J	12
L3504M	T12CM2J	15
L3506	T34C1J	12
L3506	T34C1J	15
L3507M	T34CM2J	12
L3507M	T34CM2J	15
L3509	T1C1J	12
L3509	T1C1J	15
L3509M	T1CM1J	15
L3510M	T1CM2JH	12
L3510M	T1CM2JH	15
L3513	T32C1JH	15
L3513M	T32CM1JH	15
L3513T	T32C1J14	15
L3515	T2C1JH	15
L3605T	T2C2P18	15

Baldor	U.S. MOTORS	Page
L3609T	T3C2P18	12
L5001A	XS13CA2J	16
L5004A	XS12CA2J	16
L5007A	XS34CA2J	16
M3104	D13P2AH	17
M3108	D12P2AH	17
M3112	D34P2AH	17
M3154	1814P	6
M3541	T34S1A	18
M3546	T1P2AH	18
M7080T	D13CP2PCR	12
M7010A	XS34SA2A	20
RL1203A	D14CPA2P49	10
RL1301A	180	4
RL1304A	D12CPA2PH9	10
RL1307A	1893	10
RL1310A	D1CPA2PH9	10
RL1319A	D32CPA2PH9	10
RL1323A	D12CPA2PH9	10
RL1324A	1660	10
RSP1441A	8000	4
RSP3452A	4114	4
VL1307	D34CP2PCR	12
VL1318	D1CP2PCR	12
VL1319	D32CP2PCR	12
VL3514	T32C2JCR	13
VL3515	T2C1J14CR	13
VM3309T	D13CPA2Z4	11



## Cross Reference

Find the brand and number of the motor you are replacing in the chart below. Match it to the U.S. Motor number. Use the U.S. Motor catalog number when selecting your quality replacement motor.

Century	U.S. MOTORS	Page
477	7041	3
815	D16B3N4Z9	8
668A	1879	3
790A	3738	3
920L	3618	4
3N496	1817H	7
313P296	T32C2J14	15
A019	XS34SA2A	20
B664	T34C1J	12
B664	T34C1J	15
B665	D34CP1PH	11
B674	T1C1J	12
B674	T1C1J	15
B675	T1CM1J	15
B696	T32CM1JH	15
B697	T2CM1JH	15
B762	T32C1JH	15
C045A	1384	2
C154	D13CP2PCR	12
C196	D14CPA2P49	10
C224	D13CPM2P	11
C225	T13CM2J	12
C225	T13CM2J	15
C315	D12CP2PCR	12
C316	D34CP2PCR	12
C323	D34CPM2PH	11
C403	180	4
C412	D12CPA2P49	10
C420	6311	10
C426	1893	10
C457	D13CP2P	14
C506	D32CP2PCR	12
C507	T32C2JCR	13
C520	T34CM2J	12
C520	T34CM2J	15
C521	T12CM2J	12
C521	T12CM2J	15
C523	D1CPA2PH9	10
C608	D12CP2P	11
C620	T1CM2JH	12
C620	T1CM2JH	15
C630	D12CPA2P	11
C634	D12CP2PH9	10
C658	T2C1J14CR	13
C686	T32CA2JH	15
C693	T32C2JH	15
C802	T2C1JH	15
C916	T34C2JCR	13
C926	T1C2JCR	13
D1026	1971	1
D1036	1972	1
D1056	1973	1
D1076	8905	1
DL1026	1863	1
DL1036	1864	1
DL1056	1865	1
DL1076	8904	1
E101	D32P2D	17
E102	D2P2D	17
E285	T1C2Z	15

Century	U.S. MOTORS	Page
E293	U5P2D	18
E449	D15P2D	17
ECB3054	U12S2AC	19
ECB3074	U34S2AC	19
ECB3104	U1P2DFC	19
ECB3154	U32P2DFC	19
EL2005	3196	5
F1036	8670	3
F225	3083	5
F335	2302	5
F1026S	3851	3
FC3106	1818H	7
FD1034	1693	1
FD1054	1695	1
FDL1024	1690	1
FDL1034	1692	1
FDL1054	1694	1
FE1036S	1877	3
FE1056S	1878	3
FS1036S	6880	3
FS1056S	3852	3
FS1076S	3097	3
FSE1026SV1	1876	3
G935	D1CPA2PH	11
G937	D32CP1PH	11
GF2024	8000	4
GF2034	8100	4
GF2054	8200	4
GK2054	4114	4
H061	U13S2ACR	19
H062	U12S2ACR	19
H063	U34S2ACR	19
H262	D13P2AH	17
H273	D12P2AH	17
H286	D13B10N49	8
H290	D12B2NCR	9
H448	T34S1A	18
H581	D34P2AH	17
H524	T1P2AH	18
H528	T1S3A	18
H534	1814P	6
H684	6078	5
H767	1819H	7
H868	T12S2A	18
H869	T34S2A	18
H921	U1P2DFCR	19
H931	U32P2DFCR	19
K200	T2C2P18	15
K203	T3C2P18	12
K223	T5C1K18	15
K300	FDU5CM2K21Z	6
K301	FDU7CM2K21Z	6
K302	FDU10CM2K21	6
OB1074	D34CP2PH	11
OB1074A	D2CP1PH	11
OB1104	D1CP2PH	11
OBK6002	3274	5
OCT1026S	8230	3
ORM1036	5455	3
RA1016	NA1016	2

Century	U.S. MOTORS	Page
RA1036	NA1036	2
RAL1016	NAL1016	2
RB1104	D1CP2PH9	10
RB2026L	D14B3N9	8
S118	D14C2P4Z9	10
TE149	H15P2D	19
V102	D2C2J14	14
V210	D3C1P18	11
V305	D7C2K21	11
V310	D7C1K21	11
XP1020	XS14CA2J	16



## Cross Reference

Find the brand and number of the motor you are replacing in the chart below. Match it to the U.S. Motor number. Use the U.S. Motor catalog number when selecting your quality replacement motor.

Grainger	U.S. MOTORS	Page
1D036	D13B2N4A9	8
1D041	4114	4
1D056	D34CP1PH	11
1K065	T1C2JH	12
1K065	T1C2JH	15
1K073	D32CP2PCR	12
1K083	T2C2JHC	16
1Z876	D13B10N49	8
2K484	D13CPM2P	11
2K496	D3C1P18	11
2K497	D5C1K18	11
2K501	D7C2K21	11
2K502	D1CP2PH9	10
2K522	D1CP1PH	11
2K530	D14CPA2P4	14
2K548	D12CP2P	11
2K554	D34CP2PH	11
2K555	D34CPM2PH	11
2K559	D32CP1PH	11
2K566	D10C2K21	11
2K567	T3C1P18	15
2K587	T13C3J	15
2K589	T12CM1J	15
2K592	T12CM2J	12
2K621	T2C1J14CR	13
2K670	T14C2JCR	13
2K700	D14B3N9	8
2K753	T13C2J	12
2K753	T13C2J	15
30PT53	D13CP2PH9	10
30PT54	D13CPA2P9	10
30PT59	D13CPA3P9	10
3GC39	T1S3A	18
3GC87	U12S2AC	19
3GC89	D12B2NCR	9
3K016	T12C2JCR	13
3K018	D1CP2PCR	12
3K020	T32C2JCR	13
3K036	3083	5
3K067	1004	5
3K071	D13CP2PCR	12
3K072	D12CP2PCR	12
3K073	D34CP2PCR	12
3K091	3618	4
3K110	8000	4
3K174	D2CP1PH	11
3K176	D1CPA2PH	11
3K231	T1CA2JH	15
3K235	T32CA2JH	15
3K239	T32C1JH	15
3K300	T32C1J14	15
3K344	T2C1J14	15
3K372	4293	4
3K613	3615	4
3K615	8100	4
3M658	1386	2
3M817	1865	1
3M897	1692	1
3N013	T32P2AH	18
3N017	T1P2AH	18
3N087	U1P2DFCR	19
3N265	U32P2DFCR	19
3N343	U32P2DFC	19

Grainger	U.S. MOTORS	Page
3N368	XS12SA2D	20
3N427	T34S3AH	18
3N446	6078	5
3N446	U1P2DFC	19
3N465	U7P2D	18
3N522	U10P2D	18
3N528	D12P2AH	17
3N538	T34S2A	18
3N556	U3P2D	18
3N558	U5P2D	18
3N642	D34P2AH	17
3N695	T12S2A	18
3N873	U34S2AC	19
3N876	U14S2DCR	19
4FG42	1003	5
4FG43	6079	5
4K852	D13CP2P4	11
4K855	D12CP2P	11
4M097	1971	1
4M098	1864	1
4M238	1878	3
4M383	1863	1
4M586	1972	1
4M589	8904	1
4M590	8905	1
4MA10	3196	5
4MA18	2302	5
4MA32	3274	2
4MA53	NAL1016	2
4MA55	NA1016	2
4MA61	NA1036	2
4MA80	1690	1
4MA88	1694	1
4MA90	1695	1
4THW5	U12S2ACR	19
4THW7	U34S2ACR	19
4UE85	8200	4
5K116	D12CPA2P	11
5K117	D34CPA2PH	11
5K254	D34CP2PH9	10
5K262	D14CPM2P4	11
5K454	D12CP2PH9	10
5K459	1660	10
5K460	D34CPM2PH	11
5K617	6311	10
5K636	T13CM2J	12
5K636	T13CM2J	15
5K641	T32CM2JH	15
5K801	1893	10
5K914	D14B2N49	8
5K916	D13B2N4A	8
5K921	D1CP2PH	11
5K960	T1CM1J	15
5K961	T2C1JH	15
5K966	T2C2P18	15
5K967	T3C2P18	12
5N098	XS34SA2A	20
5N256	H15P2D	19
5U865	T14S3A	18
5U867	T13S2A	18
5U869	T12S1A	18
5UKD6	D32CPM1PH	11
65812	1814P	6

Grainger	U.S. MOTORS	Page
6K026	D5C2K18	11
6K036	XS13CA2J	16
6K039	XS12CA2J	16
6K040	XS34CA2J	16
6K045	T1C2JHC	13
6K122	T12CA2J	15
6K187	D12CP2P	11
6K324	D32CPA2PH9	10
6K338	T32CM1JH	15
6K366	180	4
6K483	T34C1J	12
6K483	T34C1J	15
6K484	T1CA1J	15
6K490	D13CPA2P49	10
6K634	D7C1K21	11
6K637	T12CM2J	15
6K639	T34CM2J	12
6K639	T34CM2J	15
6K640	T1CM2JH	12
6K674	T1C2JCR	13
6K760	D1CPA2PH9	10
6K817	FDU7CM2K21Z	6
6K818	FDU10CM2K21	6
6K826	D32C2J14	11
6K828	T32C2J14	15
6K832	T32CA1JCR	13
6K937	T12C2J	12
6K938	T34C2J	12
6ML85	T5C1K18	15
6ML86	T5C2K21	15
6V574	T12C2J	15
6V578	T12C2JC	13
6V581	T12C3J	15
6V597	T13C2JC	13
6XF71	T1CM2JH	15
6XH64	D16B2N4Z9	8
6XH68	D14B2N4Z	8
6XH74	D13B3P9	8
6XH77	D16B3N4Z9	8
6XJ16	T1C2Z	15
6XZ03	T2CM1JH	15
6XZ15	T32C2JH	15
6YC23	T32C2JHC	16
6YC29	T34C2J	15
6YC32	T34C2JC	13
6YC34	T34CA2J	15
6YC35	T34CM1J	15
6YC39	T34S1A	18
6YR06	D1C2J14	11
6ZG14	FD32CM2P14	6
6ZG24	FD1CM2P14	6
6ZG27	FDU3CM2K18	6
6ZG28	FDU5CM2K18	6
6ZG29	FDU5CM2K21Z	6
6ZJ15	U13S2ACR	19
6ZN71	U2P2DFC	19
6ZZ43	XS14CA2J	16

† All marks shown within this document are properties of their respective owners.



Fishing for a motor that can endure short-term submersion in water?

**We think you'll be hooked!**

Introducing

**THE RESCUE® ECM Watt Motor.**

The new big fish in the refrigeration industry!



Splashy features include:

- IP67 Dust-Tight with All-Angle Moisture Protection
- High-Efficiency up to 70%
- UL/CUL Approved
- Operating Temperature Range -40° C to 55° C
- Dual Voltage: No Connection Change Required
- Rated 50/60 Hertz
- Body Style – Low Profile
- Stainless-Steel Shaft with Flat
- Standard 10-32 Thread Mounting Studs
- 27" Cord Lyall/OEM Plug
- Thermally Protected
- Robust Ball-Bearing System
- Meets ATEX Directive 94/9/EC
- Two-year Warranty from Installation

Nidec Motor Corporation © 2017; All Rights Reserved. U.S. Motors® is a registered trademark of Nidec Motor Corporation. Nidec Motor Corporation trademarks followed by the © symbol are registered with the U.S. Patent and Trademark Office.

**Nidec**

**NIDEC MOTOR CORPORATION**

8050 W. Florissant Avenue | St. Louis, MO 63136  
Phone: 855-487-6686 | Fax: 800-899-2887

*Nidec Motor Corporation, © 2017; All Rights Reserved.  
U.S. MOTORS® is a registered trademark of Nidec Motor Corporation.  
Nidec Motor Corporation trademarks followed by the ® symbol are  
registered with the U.S. Patent and Trademark Office.*

***Nidec***

**NIDEC MOTOR CORPORATION**

8050 W. Florissant Avenue | St. Louis, MO 63136

Phone: 855-487-6686 | Fax: 800-899-2887

[www.nidec-motor.com](http://www.nidec-motor.com) | [www.usmotors.com](http://www.usmotors.com)