

# PRODUCT INFORMATION PACKET

FASCO®

Model No: D170

Catalog No: D170

Fan and Blower Motor, 1/20 HP, 1 Ph, 60 Hz, 115 V, 1500 RPM, 1 Speed, 4.4" Diameter, OAO



Regal and Fasco are trademarks of Regal Rexnord Corporation or one of its affiliated companies.

©2023 Regal Rexnord Corporation, All Rights Reserved. MC017097E

RegalRexnord



**Nameplate Specifications**

|                    |                     |                     |               |
|--------------------|---------------------|---------------------|---------------|
| Phase              | 1                   | Output HP           | 1/20 Hp       |
| Output KW          | 0.04 kW             | Voltage             | 115 V         |
| Speed              | 1500 rpm            | Service Factor      | 1             |
| Frame              | 4.4                 | Enclosure           | Open Air Over |
| Thermal Protection | Thermally Protected | Ambient Temperature | 40 °C         |
| Frequency          | 60 Hz               | Current             | 1.7 A         |
| Duty               | Air Over            | Insulation Class    | A             |
| UL                 | Recognized          | CSA                 | Y             |
| CE                 | N                   | Number of Speeds    | 1             |

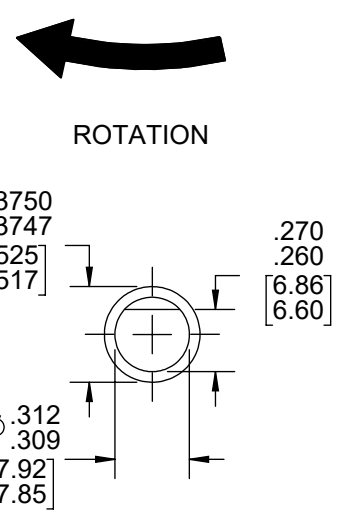
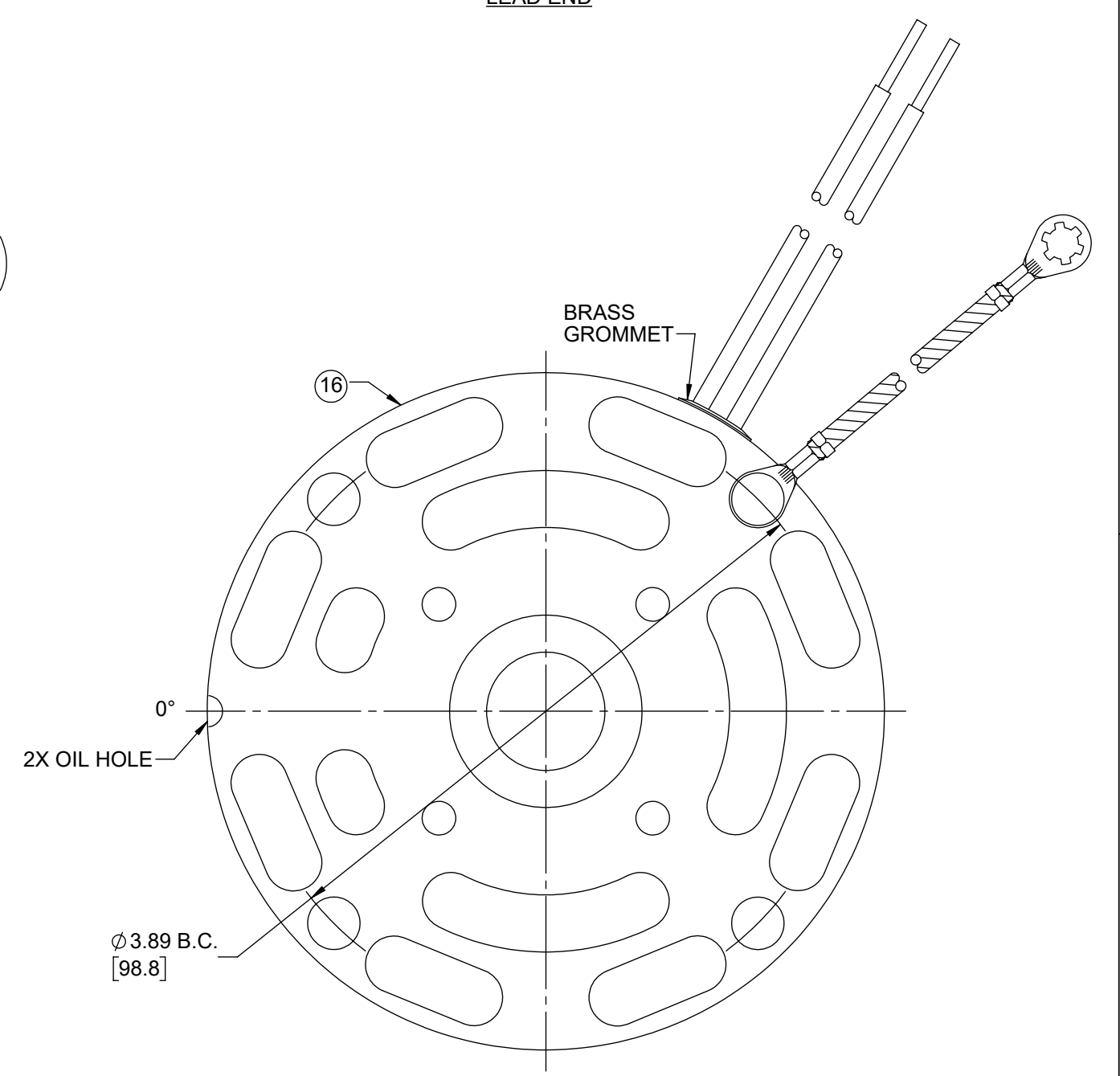
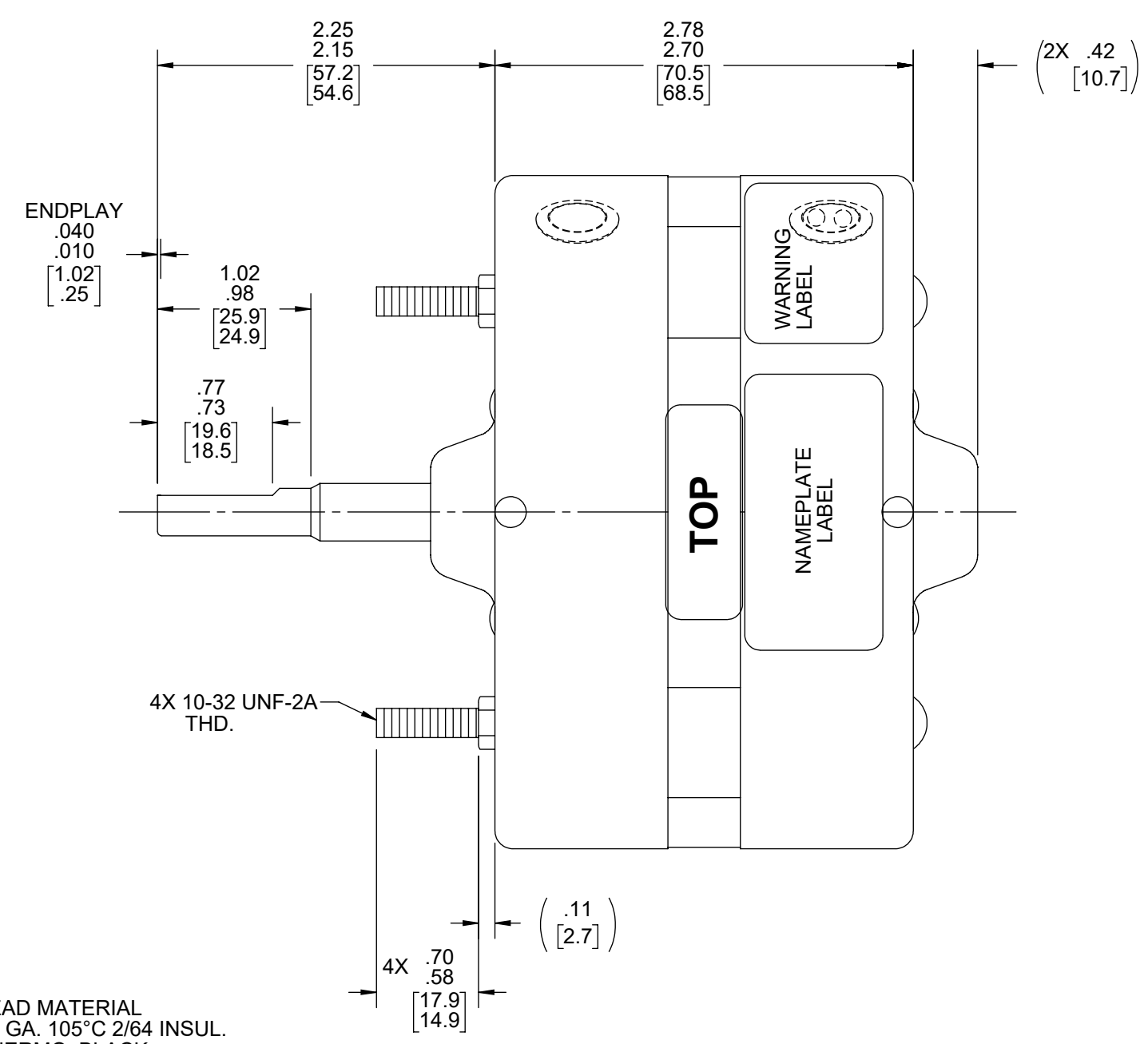
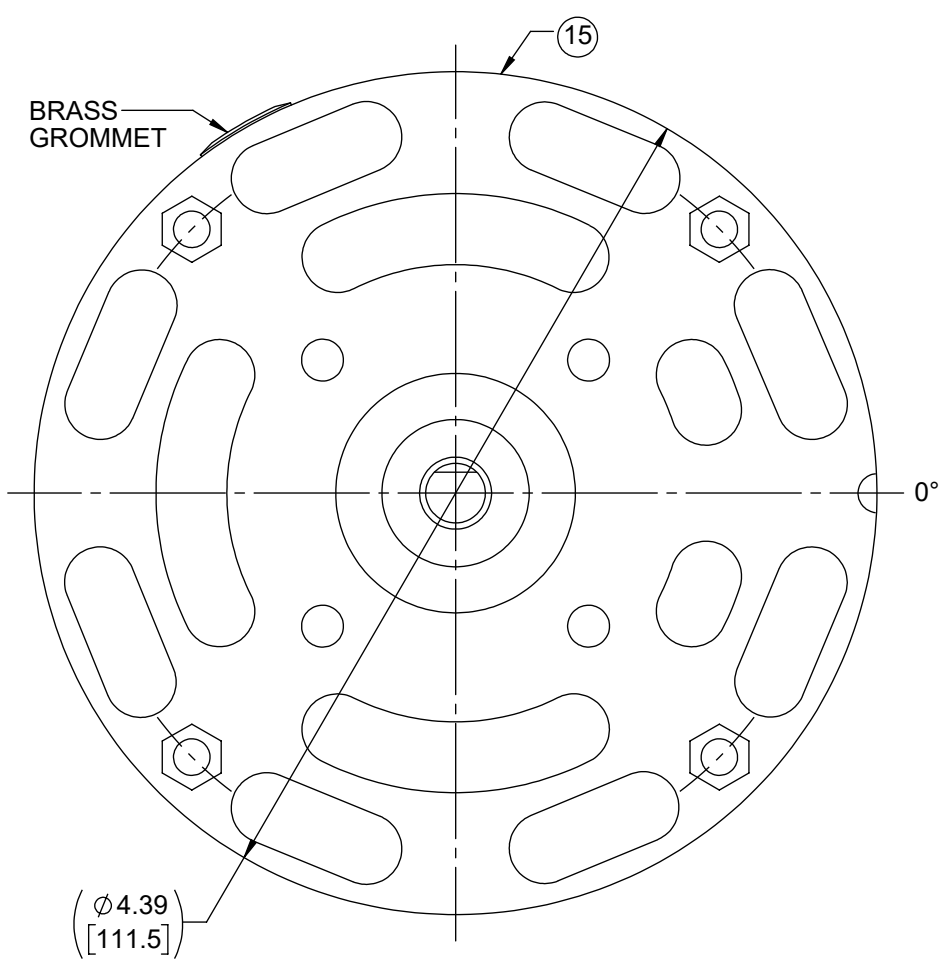
**Technical Specifications**

|                       |                |                   |                     |
|-----------------------|----------------|-------------------|---------------------|
| Electrical Type       | Shaded Pole    | Starting Method   | Across The Line     |
| Poles                 | 4              | Rotation          | Clockwise Shaft End |
| Mounting              | Extended Studs | Drive End Bearing | Sleeve              |
| Opp Drive End Bearing | Sleeve         | Frame Material    | Na                  |
| Shaft Type            | Flat           | Overall Length    | 5.45 in             |
| Shaft Diameter        | 0.313 in       | Shaft Extension   | 2.2 in              |
| Connection Drawing    | NA             | Outline Drawing   | 71085136            |

This is an uncontrolled document once printed or downloaded and is subject to change without notice. Date Created:09/25/2023

OPPOSITE LEAD END

LEAD END



LEAD MATERIAL  
 18 GA. 105°C 2/64 INSUL.  
 THERMO. BLACK  
 29.25/27.25 [743.0/962.2]  
 .56/.44 [14.2/11.2] STRIP  
 GROUND LEAD MATERIAL  
 GRN/YEL  
 7.00/6.00 [177.8/152.4]  
 W/ RING TERMINAL  
 AMP 350436-2

- NOTES:
- SHAFT IS BONDERIZED.
  - THRU AIR SPACING BETWEEN WIRE AND METAL .063 [1.60] MINIMUM.
  - FOR WASHER SET-UP, SEE CHART C6010279, DETAIL "H".
  - ROTOR FREENESS TO BE WITHIN 3/4 OZ. IN.
  - TIE BOLT TORQUE TOLERANCE 7 - 10 IN.LBS.
  - LOCATE TOP LABEL, 61206085, AT 0° AS SHOWN.
  - LOCATE NAMEPLATE .03 FROM EDGE OF LEAD END COVER AS SHOWN.
  - MAXIMUM 0.1 Ω RESISTANCE BETWEEN GROUND TERMINAL AND MOTOR FRAME.
  - MOTOR IS MECHANICALLY REVERSIBLE.
  - MOTOR MUST START WITH 90 VOLTS APPLIED TO LOWEST SPEED.
  - SEE PACKAGING MANUAL PAGE 2 FOR PACKAGING PROCEDURE.
  - PACK 1 PER CONTAINER, 40 CONTAINERS PER LAYER, 6 LAYERS PER PALLET, 240 MAX. PER PALLET.
  - PLACE PAMPHLET, 61224579, IN CONTAINER WITH MOTOR.
  - CENTER CARTON LABEL, 61229238, ON END OF CONTAINER.
  - SEE DRAWING 87856079 SHEET 1 FOR PALLET LAYOUT.
  - CARTON LABELS MUST ALL FACE ONE DIRECTION TOWARD THE OPEN END OF THE PALLET. SEE 88834408.
  - NO PACKAGING TAPE OVER CARTON LABEL.

61305568

**SAFETY WARNING**  
 This motor must be grounded in accordance with local or national electrical codes to prevent possible injury due to electrical shock

**AVERTISSEMENT DE SÉCURITÉ**  
 Ce moteur doit être fondée sur conformément à la réglementation locale ou national électrique codes pour prévenir d'éventuelles blessures en raison de choc électrique

61206085

TOP

61299553

**FASCO™**

Assembled In Mexico

No. 71085136 TYPE U8 AO 1 PH  
 115 V 60 Hz  
 1.7 A 1500 RPM 1/20 HP

Model D170

Thermally Protected OSB

|   |             |               |                  |  |  |             |       |
|---|-------------|---------------|------------------|--|--|-------------|-------|
| CUSTOMER:   | FASCO DIST. | APPLICATION:  | DIST. SALES      | HI-POT TEST 2000 VOLTS<br>MAX LEAKAGE CURRENT 5 mA | PRODUCTION TEST AT IDLE<br>115 VOLTS 60 Hz | MOTOR SPEED |       |
| CUSTOMER PN:  | D170        | MOTOR WEIGHT: | DRY              |  | AMP  | WATT        | HIGH  |
|   |             | ENVIRONMENT:  |                  |  | AMP  | WATT        | HIGH  |
|   |             | MOTOR TYPE    | REFERENCE SAMPLE |  |  |             |       |
|   |             | SHADED POLE   |                  |  |  |             |       |
|   |             | B 00          | LA 08            | FR 10  | A V  | S 01        |       |
|   |             | C OB          | E 5              | B 5  | A 0  |             |       |
| TYPICAL PERFORMANCE AT 115 VOLTS 60 HZ 1 PH 1/25 HP |             |               |                  |  |  |             |       |
| MOTOR SPEED   | IDLE        |               | LOADED           |  | LOCKED                                     |             | BREAK |
|   | RPM         | AMP           | WATT             | IN OZ  | RPM  | AMP         | WATT  |
| HIGH  | 1730        | 1.4           | 79               | 30   | 1500                                       | 1.6         | 110   |
|   |             |               |                  |  |  |             |       |
|   |             |               |                  |  |  |             |       |

|  |             |               |   |
|--|-------------|---------------|---|
| DRAWING REVISION   | REVISION BY | REV DATE/DATE | TOLERANCES (EXCEPT AS NOTED):                               |
| AC   | SDM         | 3/25/2022     | DEC. INCH mm ANGLE  |
| REQUEST NUMBER   | APPROVED BY | DATE          | .X ±0.1 [±3] ±1°  |
| ECR-0216475  | MLS         | 3/25/2022     | .XXX ±0.01 [±0.3]   |
| REQUEST NUMBER DESCRIPTION   |             |               | .XXX ±0.005 [±0.13]   |
| CHANGE FASCO LOGO TO FASCO TM  |             |               | .XXX ±0.0005 [±0.013]                                       |
| COPYRIGHT (PER REVISION DATE) REGAL BELOIT AMERICA, INC. ALL RIGHTS RESERVED. PROPRIETARY AND CONFIDENTIAL INFORMATION - THIS DOCUMENT IS THE PROPERTY OF REGAL BELOIT AMERICA, INC. (OWNER) AND CONTAINS OWNER'S PROPRIETARY INFORMATION. ANY PERSON, CORPORATION OR OTHER FIRM RECEIVING IT IS DEEMED, BY RECEIVING IT, TO AGREE THAT IT, AND/OR ANY PART OF IT, SHALL NOT BE DISCLOSED TO ANY PERSON, CORPORATION OR OTHER ENTITY, DUPLICATED, AND/OR USED, EXCEPT AS EXPRESSLY APPROVED IN WRITING IN ADVANCE BY OWNER. THIS DOCUMENT SHALL BE RETURNED TO OWNER UPON REQUEST. IT MAY BE SUBJECT TO CERTAIN RESTRICTIONS UNDER APPLICABLE EXPORT CONTROL LAWS AND REGULATIONS. |             |               | REMOVE BURRS & BREAK SHARP EDGES: .003/.015 [.08/.38] X 45° |
|  |             |               | CORNER FILLETS: R.02 [5]                                    |
|  |             |               | MACHINED SURFACES: .125/ mm 3.2                             |
|  |             |               | mm DIMENSIONS IN [BRACKETS] INCH mm ARE FOR REFERENCE ONLY  |

|                        |           |                |                            |
|------------------------|-----------|----------------|----------------------------|
| DRAWN BY               | SDM       | Regal Rexnord  | Regal Beloit America, Inc. |
| DATE                   | 9/17/2019 | DESCRIPTION    | OUTLINE MOTOR ASSY         |
| APPROVED BY            | FDP       | MATERIAL       | PROCESS/FINISH GRAY        |
| DATE                   | 9/17/2019 | DRAWING NUMBER | 71085136                   |
| THIRD ANGLE PROJECTION | SIZE C    | SHEET          | 1 OF 1                     |