

CONDENSATE MANAGEMENT

ClearVue™ Tube & Traps.....78
 Condensate Drain Line Cleaning78-79
 Condensate Drain Line Switches 77
 Condensate Drain Pans, Fittings, Adapters.....79-81
 Condensate Pumps.....76-77
 Drain Line, Tubing81
 Tapes82



ClearVue™ Pump

About ClearVue™

The new ClearVue™ condensate pump from DiversiTech is unlike any other pump available. ClearVue™ features Variable Speed and Lift which makes ClearVue™ the smartest condensate pump on the market. Variable Speed and Lift provides ClearVue™ the ability to “think” and adapt to changing conditions. It’s not just off or on like a regular pump. ClearVue™ senses the amount of condensate water in the tank and its rate of inflow and adjusts its speed and lift to match the conditions and keep the tank clear. ClearVue™ starts pumping slowly and only accelerates if needed. And since it pumps slowly, ClearVue™ is super quiet and easy to live with.

With its Floatless Sensor™ technology, ClearVue™ doesn’t have the usual problems associated with float switch pumps. No more stuck floats or misaligned contacts to cause problems and potential damage. ClearVue™ uses Floatless Sensor™ technology to detect the condensate level in the tank and make the right decision about what to do next. ClearVue™ pump also features a see-through tank to give the contractor and homeowner a clear view of water, blockage, and buildup in the tank. This clear tank allows for quick troubleshooting due to normal buildup caused by daily condensate generation. ClearVue™ gives you the most improved, user-inspired features on the market.

What makes ClearVue™ Better?

- The ClearVue™ pump features Variable Speed and Lift which allows ClearVue™ to change pump speed and lift based on condensate flow. Other pumps are simply off or on but ClearVue™ starts pumping slowly, then gradually accelerates its lift if needed.
- Floatless Sensor™ technology means more reliable operation and no problems from stuck or fouled mechanical floats. ClearVue’s Floatless Sensor™ detects the condensate level without a float for reliable, accurate operation. **No float, no problems.**
- World’s only self-cleaning condensate pump. ClearVue™ features a unique self-cleaning mode to maintain itself and help help keep drain lines clear. Also, if ClearVue™ senses a blockage, it will begin self-cleaning and pulse the condensate water to try to remove the blockage.
- ClearVue™ also offers a clear tank that allows the user to see what’s happening inside. This means faster and more accurate troubleshooting.



**FLOATLESS
SENSOR™**

ClearVue
PUMP™

0-22'
Variable Speed
and Lift
Self-Cleaning



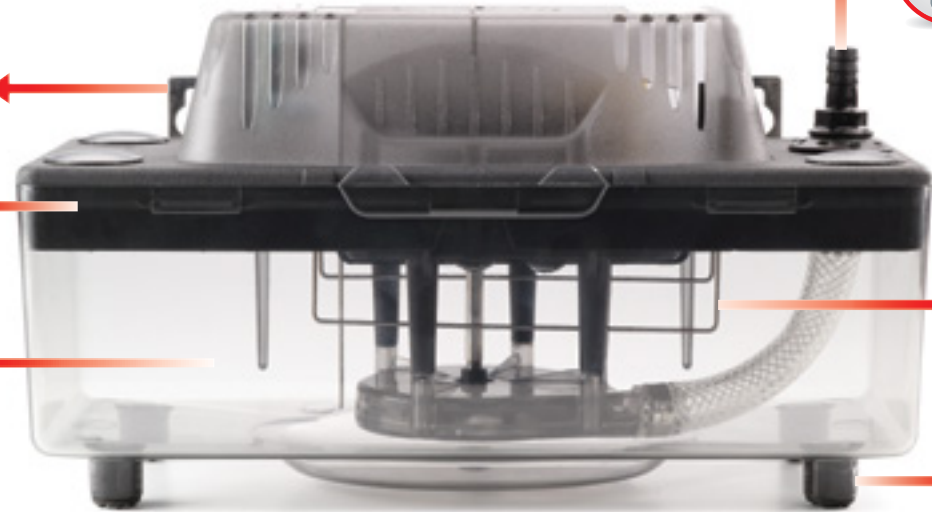
Stainless Steel
Mounting Tabs

Reversible
Deck

Clear Tank

**FLOATLESS
SENSOR**™

Silicone
Rubber Feet



NO FLOAT, NO PROBLEMS



Floatless Sensor™ Technology
ClearVue's sensors tell it how high the water is in the tank and how fast the inflow is. It then adjusts pump speed and lift to keep the tank clear and the system running properly. *No float, no problems.*



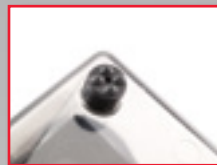
Push Button Drain
Need to drain the tank quickly? Simply push the DRAIN button and ClearVue™ removes all the water in the tank—fast.



Clear Tank
ClearVue™ also offers a clear tank so you can easily see what's happening inside the tank. The clear tank makes it easy to see the water level and diagnose other issues if needed.



Check Valve
Removable duckbill check valve resists corrosion and wear and is self-cleaning.



Molded Silicone Rubber Feet
Specially designed rubber feet dampen vibration and noise, making ClearVue™ quiet and easy to live with. And like the feet on all DiversiTech pumps, they are installed at the factory and stay in place.



Stainless Steel Hang Tabs
Two stainless steel hanging tabs offer many installation options. The tabs are sturdy and durable and will last longer than standard plastic mounts.



LED Indicator Lights
4 LED indicator lights – Ready, Pumping, Cleaning, and Alarm. LED lights tell you what mode the pump is in at any given time.

ClearVue™ Mini Pump

ClearVue™ Mini is the newest innovation in Ductless System pumps from DiversiTech. It's small, quiet and offers a host of unique features that help it outperform other mini-split pumps. And just like the original ClearVue™ and ClearVueKube™ pumps, ClearVue™ Mini features Variable Speed and Lift and Floatless Sensor™ technology that help the pump think and respond to changing conditions.



Look at everything ClearVue™ Mini offers:

NO FLOAT, NO PROBLEMS



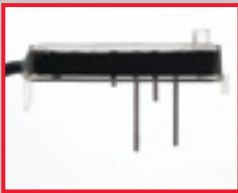
Variable Speed and Lift

ClearVue™ Mini determines how fast condensate is entering the tank and adjusts its speed and lift to match the conditions and keep the tank clear.



Aluminum Pump Housing

ClearVue™ Mini features an aluminum housing that is built to last. This tough housing protects the pump from physical damage and helps contribute to the super quiet operation of the pump.



Floatless Sensor™ Technology

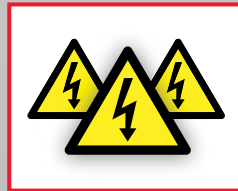
No float, no problem! That's what ClearVue™ Mini's Floatless Sensor™ will provide you and your customers. ClearVue™ Mini's Floatless Sensor™ eliminates many of the typical problems associated with conventional condensate pumps. By eliminating the float, ClearVue™ Mini won't fail like conventional float-switch pumps.



Rubber Mounting Pad

The molded rubber mounting pad can be used to mount ClearVue™ Mini to a vertical or horizontal surface; or to copper refrigerant lines with cable ties. The rubber pad decreases sound and vibration, contributing to a very quiet pump.

ClearVue™ Mini uses Floatless Sensor™ technology in different levels in the tank to provide the most accurate water level information to the pump's brain. And better information means a better pump. ClearVue's Floatless Sensor™ technology tells it how high the water is in the tank and how fast the inflow is. ClearVue™ Mini then uses this information to adjust its pump speed and lift to keep the tank clear and the system running properly.



Multiple Voltages

ClearVue™ Mini can be powered with any voltage from 120 to 240V, 50 or 60 Hz. With one product suitable for multiple voltages, there is no need to stock separate SKUs for different voltages.



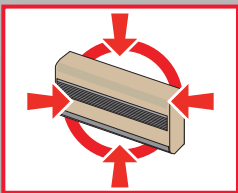
Super Quiet

With Variable Speed and Lift ClearVue™ Mini is nearly inaudible. You literally can hardly hear the pump run. This quiet operation allows maximum installation flexibility, as you can place the pump right in the room where people are.



LED Lights

ClearVue™ Mini features three LED indicator lights: Ready, Pumping, and Alarm. The LED lights tell you what mode the pump is in at any given time.



Flexible Installation

ClearVue™ Mini is compact — only 3-1/2" x 2" x 3". It fits almost anywhere including inside a line set cover, inside the wall cassette unit (on some cassette models), and easily installs in the ceiling or behind a wall. ClearVue™ Mini features suction lift of up to 6.5'.



Separate Tank

ClearVue™ Mini features a separate tank that can be located away from pump if needed, providing a more flexible installation. This small tank fits inside most indoor cassettes.



Built-in Overflow Switch

ClearVue™ Mini also include a built-in overflow switch that shuts down the compressor in case of clogged line. This prevents damage to equipment or the environment.



2 Year Warranty

ClearVue Mini includes an extended 2 year warranty.

QUICK, EASY INSTALLATION
HIGHEST LIFT: 22FT.
SAFETY SWITCH
AVAILABLE WITH TUBING
LOW PROFILE MODELS AVAILABLE

SAVE INSTALLATION TIME WITH

CP-22 CONDENSATE PUMPS



DiversiTech Condensate Pumps



Metal Hang Tabs

Shatterproof metal hang tabs have hole-and-slot design for easy mounting. Tabs are located on convenient 8" centers.



Indicator Lights

Red, yellow, and green indicator lights show the pump status. Green for power applied, yellow for pump running, and red for high level alarm.



Overflow Safety Switch

1/4" quick connect terminals provide easy connection to the built-in overflow switch. Two terminals are provided allowing the installer flexibility to connect air handler shut-down. Switch features SPDT isolated contacts ready for connection to building automation systems.



Four Inlet Holes

Four inlets versus two or three on other pumps provide the greatest installation versatility. Inlet holes have a reinforced wall for durability.



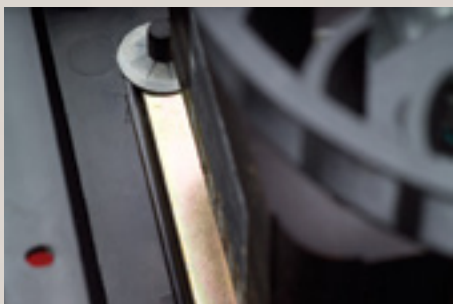
Rubber Feet

Rubber feet dampen vibration which reduces noise.



Check Valve

Removable check valve for easy cleaning.



Vibration Isolation

An elastomeric motor mounting gasket dampens vibration.

High Rise Pan™

The High Rise Pan™ is an innovative new plastic drain pan design which allows placement of an air handler 2-3/4" above the outside lip of the pan without the need for separate, cumbersome mounting blocks. The pan has a molded-in network of risers to give a 5" lift. The risers are positioned to accept a wide variety of air handler sizes. Each riser has a specially shaped area at each end to accommodate a 2" x 2" anti-vibration pad which allows for quiet operation at all times.

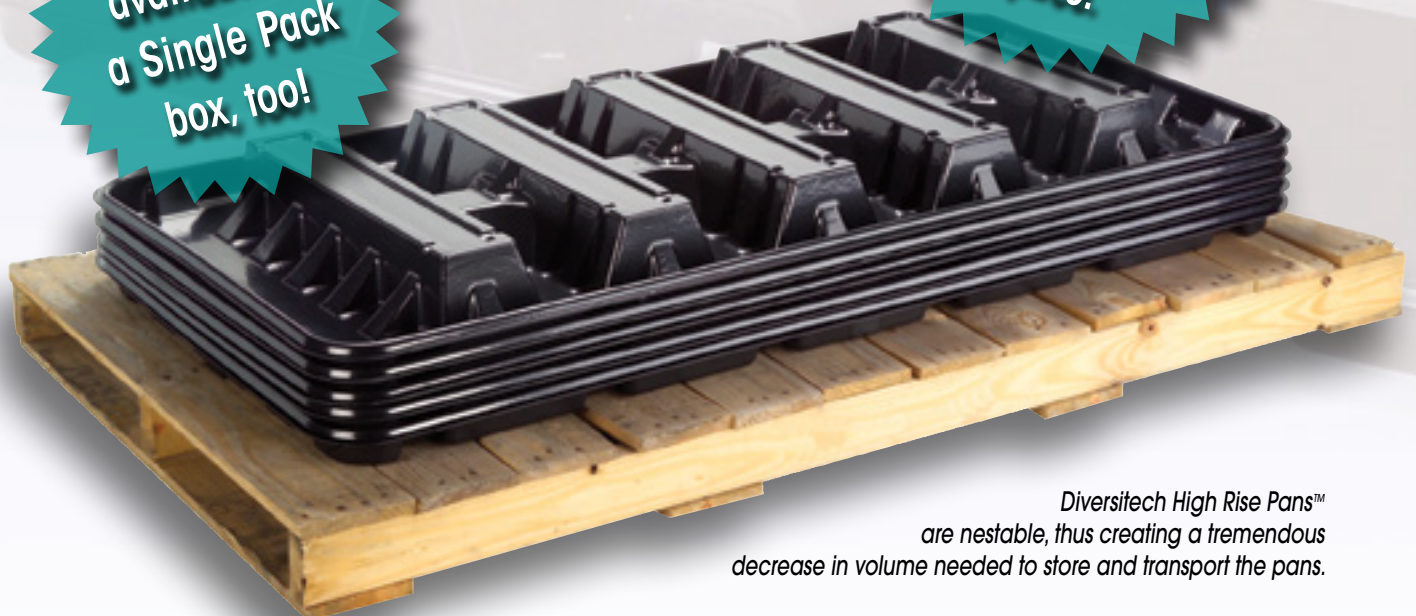
Other features include heavy duty reinforcement throughout to give plenty of support as well as rolled edges for durability. One-piece plastic construction ensures no rust, leaks, or seams to split.

Each High Rise Pan™ comes complete with a Condensate Cop™ float switch, six E.V.A. anti-vibration pads, and one 3/4" PVC male adapter. Installation is straightforward and hassle-free.

Water pushes to the side of the pan preventing stagnant water from building up in inaccessible areas. This helps prevent slime and algae accumulations, eliminating call backs due to foul smells.

Now available in a Single Pack box, too!

Nestable! High Rise Pans™ take up less space.



Diversitech High Rise Pans™ are nestable, thus creating a tremendous decrease in volume needed to store and transport the pans.

FEATURE

BENEFIT

Nestable

Because DiversiTech High Rise Pans™ are nestable, there is a tremendous decrease in volume needed to store and transport the pans.



Eliminates a single line vendor

Eliminating a vendor cuts distributor costs and saves warehouse and transportation costs.

Water pushes to the side of the pan

This prevents stagnant water in inaccessible areas which helps prevent slime and algae buildup, eliminating call backs because of smell.

Includes EVA™ pads

EVA™ pads increase the overall height of the unit which increases available drain line pitch. EVA™ pads also create better sound and vibration dampening for a quieter installation, meaning less call backs due to noise.

Standard anti-vibration pad

Uses a standard, easily available anti-vibration pad, eliminating the need to stock extra SKUs of anti-vibration pads. Competitor products use specialized grommets which are not commonly available.



Installation kit includes six EVA™ pads and Condensate Cop™ float switch

The universal CC-1 can be placed anywhere on the pan. It can also be used on other secondary drain pans (metal or plastic). You will never forget a part because you have a complete kit!

80% thicker than the standard drain pan

Stronger and more durable for job site installations; resists work place installation damage, minimizing the need to replace drain pans damaged at job site.



ABS construction/flexible material

Time-tested material has been used for 15 years in the market. Flexibility allows for easier fit in tight work places and a faster installation. You'll have peace of mind for long term performance.

Heat/cold resistance

Meets structural and temperature requirements for attic installations.

5" riser

5" riser gives additional height needed to assure proper drain line pitch. Stack EVA™ pads for additional height.

Heavy-duty reinforced construction

Gives support for a wider range of air handler applications, minimizing the need to replace drain pans damaged at the job site.



Metal Drain Pan

DiversiTech introduces the ultimate in drain pan design - the seamless, nestable, metal drain pan with rolled edges.



FEATURES

BENEFITS

Seamless

The seamless design of DiversiTech metal drain pans virtually eliminates leaks from seams and folded corners found in conventional metal drain pans.

Nestable

Because DiversiTech drain pans are nestable, there is a tremendous decrease in volume needed to store and transport metal drain pans. A stack of seventy DiversiTech metal drain pans is only 12" high. Therefore, seventy DiversiTech pans fit in the same space as six conventional 2" deep non-nesting drain pans!

Single Piece Design

The DiversiTech metal drain pan is stamped from a single sheet of 26 gauge galvanized steel which prevents leaks.

Rolled Edge

The rolled edge virtually eliminates hand injuries during handling.

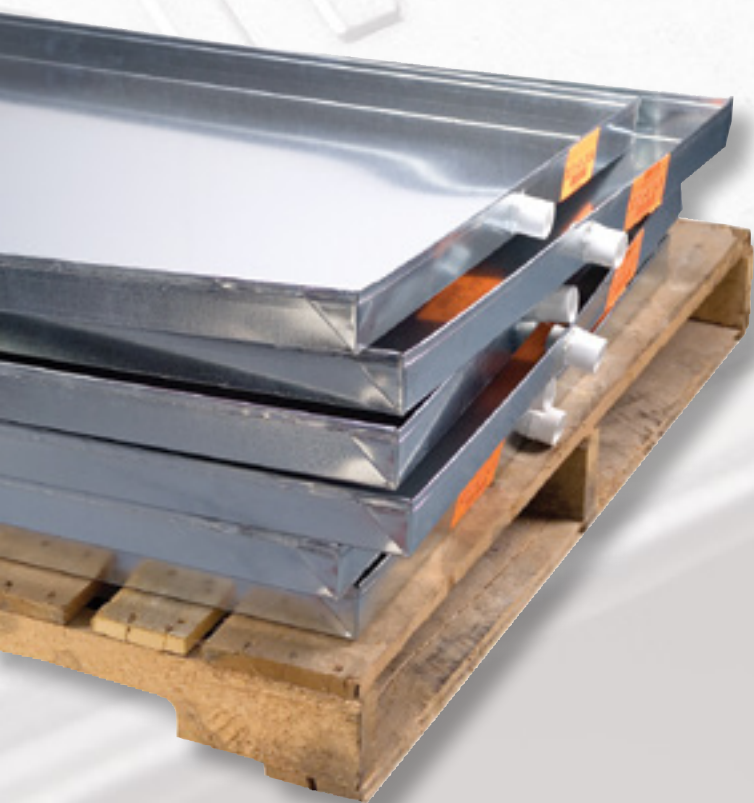
Two Outlets

Easy, flexible installation with an outlet on both the long and short side of the pan — no need to cut an outlet if you have the wrong pan on the job.

Fittings Included

Get everything you need for the installation of the pan in a single package. Fittings are included with DiversiTech metal drain pans.

A stack of
70 DiversiTech
metal drain pans
is only
12" high!



70 DiversiTech drain pans fit in the same space as 6 conventional 2" deep non-nesting drain pans!



**Faster
Install**

Hinged Fast Lock Clamp

Hinged clamp bar self adjusts to angle of pan wall for a level switch. One-step installation with single screw fastener. Single screw fastens switch to pan – no drilling and no fussing with multiple thumb screws.



**Works
Everywhere**

Universal Pan Mount

Easy twist to adjust to pan walls of 0, 8, 15 or 22 degrees. Fast, simple, easy, and level installation on metal or plastic pans for reliable moisture detection. Angled installation on other switches reduces their ability to detect condensate overflow.

CS1200 AC Shutoff Switch

The CS1200 Multi-Position AC Shutoff Switch from DiversiTech is a reliable, easy to use float switch that clips on to any pan size. Designed with contractor feedback in mind, the CS1200 features an adjustable housing that twists to match any pan angle for easy installation. The CS1200 detects water in the pan quickly and shuts off the equipment to prevent damage. The CS1200 also includes these great features:

- Hinged fast lock clamp
- LED Indicator light
- Universal pan mount
- Large water openings for fast detection
- Push to test button
- Simple 2 wire installation
- 5 AMP switching, 24 Volt



LED Indicator Light

Easy to see visual trip indicator alarm displays red if switch is tripped. CS1200 is the only pan switch with a light for fast troubleshooting.



Push to Test

Know instantly with the push of a button that your switch is installed and functioning properly. The bright LED indicator visually confirms proper operation.



Reliable Mechanical Contact Float Switch

Trouble free design reduces overflow failures and call backs. All electronics are mounted above the waterline, eliminating the chance of malfunction. The one piece molded float protects switch from water and debris. This is the same design used for safety interlocks because it gives you years of reliable, maintenance free service.



10x Open Area

10 times more open area for water to enter the detection chamber with our large open area design. No detection failure from small holes that can get clogged. Prevents switch failure from clogged water holes. No call backs due to clogged switches.



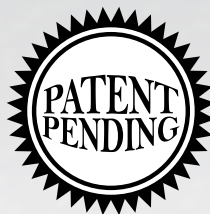
Simple 2 Wire Installation

With a simple 2 wire connection, the CS1200 is simple, easy, and fast to install. No checking polarity, just connect the switch in the red or yellow wire. Simple well designed electrical connections using 6 feet of the standard 18AWG wire and high current (5 amp) switching. The CS1200 gives you everything you need in one simple switch.



Clear Design

CS1200 is the only pan switch with a clear design for fast troubleshooting. Clear design lets you see the float and switch. Know instantly that the switch is working and components are functioning.



RECOGNIZED COMPONENT



Intertek

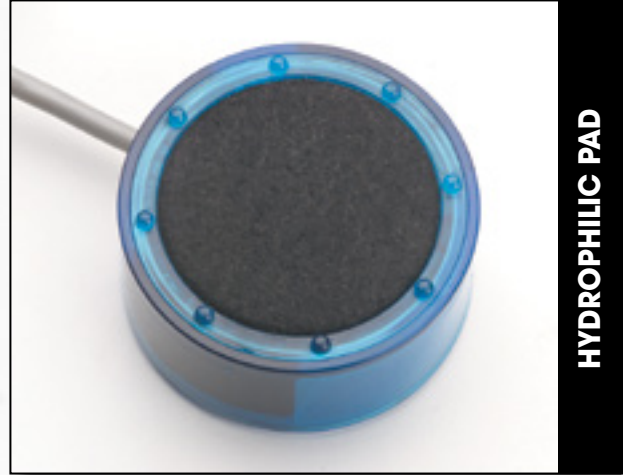
Wet Switch Flood Detector

WHAT IS THE WET SWITCH?

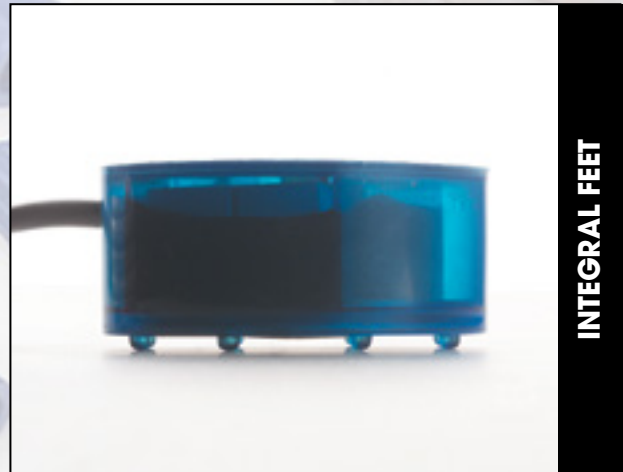
The Wet Switch is a solid state device designed to detect the presence of condensate water overflow. The Wet Switch is placed into the secondary drain pan — a normally dry pan. If the primary drain pan fails, condensate water will overflow into the secondary drain pan. Upon sensing moisture, the Wet Switch will turn the system off (typically the cause of the condensing water) to help prevent damage to carpets, walls, woodwork, ceilings, and other property.

- Hydrophilic Pad
- Integral Feet
- Stainless Steel Sensor Array
- Solid State Electronics
- Epoxy Encapsulated Electronics
- Double Throw Relay
- Standard 24VAC control
- Multiple Unit Connectivity

The Wet Switch is designed to interrupt the operation of cooling systems. However, it is a water activated switch and can be used in a variety of other applications.



HYDROPHILIC PAD



INTEGRAL FEET



STAINLESS STEEL SENSORS

HYDROPHILIC PAD

A high tech polymer fiber quickly draws water into the sensor array using proven capillary technology.

INTEGRAL FEET

Integral feet raise the hydrophilic pad and sensor array off the drain pan slightly to prevent nuisance tripping and pan corrosion (metal pans only) from interfering with the sensor array.

STAINLESS STEEL SENSOR ARRAY

A high tech array of multiple stainless steel sensors detects even a minimal amount of water drawn into the hydrophilic pad.

COMPACT PACKAGE

This technology is packed into a 3-5/8" diameter by 1-1/4" high cylinder. Furnished complete with 5-conductor 22AWG stranded cable, 6' long.

DOUBLE THROW RELAY

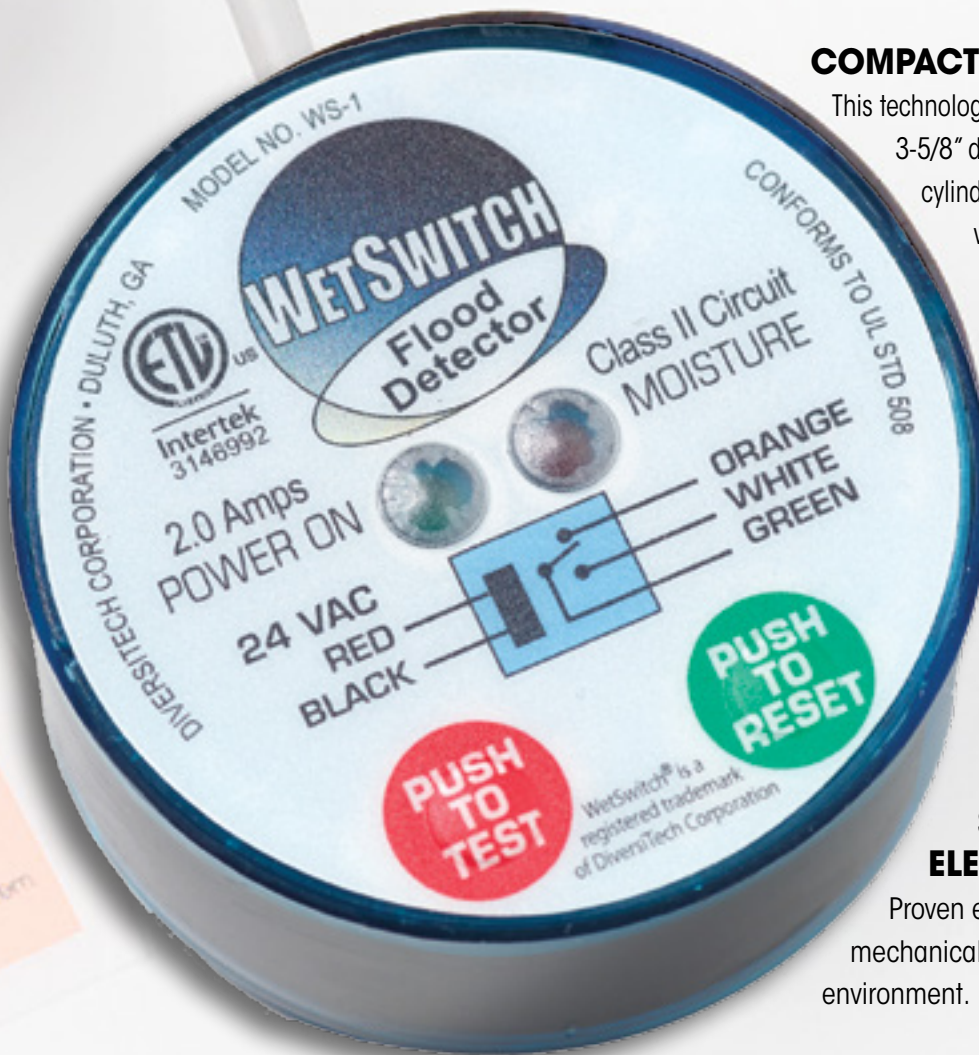
Allows for wiring to interrupt system and to sound an alarm (by others) when moisture is detected.

SOLID STATE ELECTRONICS

Proven electronics prevent mechanical failure in an aggressive operating environment.

MULTIPLE UNIT CONNECTIVITY

Multiple unit connectivity allows for multiple Wet Switches to be connected in series to adequately cover large drain pan areas.



Drain Gun - Charles Gallo Brand



The Drain Gun - Charles Gallo Brand is a lightweight (3oz.) portable tool designed to blow out condensate drain lines instantly. Simply insert a Swoosh CO₂ cartridge into the Charles Gallo Drain Gun and with a press of the trigger — SWOOSH — 800 psi of oil free air clears the line.

INSTRUCTIONS:

- Unscrew cup and insert cartridge with the narrow end up.
- Without depressing the trigger, screw the cup slowly into the head until the cartridge contacts the puncture pin.
- Quickly and firmly screw the unit together to puncture and seal the cartridge in the same motion.

Note: Not completely screwing the unit together may result in escaping gas.

- Release the red safety catch.
- Depress the trigger to discharge the Swoosh CO₂ cartridge. For condensate drains, a quick and full discharge is best.

The Drain Gun - Charles Gallo Brand is for use with condensate drain and oil burner lines only.



SMALL AND LIGHTWEIGHT

The Drain Gun packs cleaning power into a small, lightweight package. This prevents the need for carrying heavy air or nitrogen tanks.

AIR POWER

The Drain Gun uses CO₂, eliminating the mess caused by water back flushing drain lines.

ENVIRONMENTALLY FRIENDLY

The Drain Gun uses carbon dioxide (CO₂), a common component of air, and is totally safe for use in the environment. The Drain Gun is an excellent alternative to the environmentally unfriendly practice of using refrigerant to clean the drain line.

FLEXIBLE HOSE ASSEMBLY

The flexible hose assembly enables you to maneuver through cabinets, coils, and hard to reach drains.

ADAPTER KIT

An adapter kit is available to allow for use on oil burner lines and tighter areas with a 90° fitting.



Fittings increase the versatility of the innovative Drain Gun and are available from your distributor.

90° FITTING FOR TIGHT AREAS



FITTING FOR OIL BURNER LINES



FITTING FOR LARGER DRAINS



Condensate Drain Line Cleaners

DiversiTech offers a family of products designed to help make condensate drain line cleaning faster and easier. From the super lightweight handheld Charles Gallo Drain Gun to the full power of the DrainDawg, DiversiTech has the right solution for every need. These products also have multiple other uses including operating air power tools, purging and testing copper tubing and more.



HANDHELD POWER

- Clears condensate drain lines with a SWOOSH!
- Lightweight and portable - goes anywhere
- Environmentally friendly
- Uses CO₂ refill cartridges



PORTABLE POWER

- Uses Nitrogen or CO₂
- Lightweight and portable
- Includes boxed fitting kit
- Easy to refill at your truck
- Multiple uses
- Includes inflatable DrainDawg fitting to clear lines fast



ULTIMATE POWER

- Uses Nitrogen or CO₂
- Includes 10' flexible hose and blowgun assembly
- Includes boxed fitting kit
- Multiple uses
- Includes inflatable DrainDawg fitting to clear lines fast



A/C Easy Tee®

The A/C Easy Tee® from DiversiTech is the easy way to unclog and clean drain lines in just seconds. It installs quickly and provides permanent, fast access for routine drain line maintenance. And with the Service Tool Kit adapters you can use water or compressed gas to quickly clean out the lines to maintain proper flow. Ideal for both commercial and residential systems.



Make your service calls faster and simpler with the A/C Easy Tee®.



Flexible to Use

The A/C Easy Tee® can be installed in many different ways. There is no designated inlet or outlet. Both connections can be either. The Service Tool Kit allows the technician to close off backflow creating full discharge of water or nitrogen to clean out the drain line. It can also be used with a wet/dry vac to suction dirt, debris, and gunk out of a primary drain pan.



Code Required

A Service Port – also called a Cleanout – is required by code (IMC - SECTION 307.2.5, IRC-SECTION M1411.3.3). Don't get your jobs red tagged by code inspectors. Install an A/C Easy Tee®.



Simple Design

The A/C Easy Tee® Service Port is a compact, simple design with no moving parts. Small, fiddly parts can and will fail. The A/C Easy Tee® has a simple cap that screws off for easy access to the condensate drain line.



No Drainage Block

Featuring a simple, easy design without flappers or ball valves like other products. Flappers and ball valves can fail or be left closed in the drain line.



www.aceasytee.com

CONDENSATE PUMPS

ClearVue™ Pump

No Float, No Problems! ClearVue's Variable Speed and Lift and Floatless Sensor™ make this the most advanced condensate pump ever. This new pump can provide up to 22' of lift if needed. ClearVue™ runs at the minimum speed needed, saving wear on the pump. The pump selects the lowest effective speed, making it quieter than a regular pump. Its unique self cleaning feature senses problems and automatically enters a self cleaning mode using condensate water to fix the issue. The ClearVue™ pump features a clear bottom tank to easily check the water level. Other features include: stainless steel mounting tabs, silicone rubber feet, reversible deck, four inlet holes, and LED indicator lights. ETL Listed File Number 3190890



IQP-120

CATALOG NO.	DESCRIPTION	UOM	ORDER MULTIPLE
IQP-120	ClearVue™ Pump – 120V – 0-22' Lift	EA	6
IQP-120T	ClearVue™ Pump w/Tube – 120V – 0-22' Lift	EA	6

FP-22 Furnace Pump



The FP-22 Furnace Pump is a full featured condensate pump designed for condensing furnaces and other hot water applications. It handles hot condensate water up to 190 degrees F. Other features include 22' lift, built-in P traps, steam resistant electronics, and a super tough tank. Available in 120 and 230V models.



FP-22

CATALOG NO.	DESCRIPTION	UOM	ORDER MULTIPLE
FP-22	Furnace Pump 120V 22' Lift 190°F Condensate	EA	1
FP-22-230	Furnace Pump 230V 22' Lift 190°F Condensate	EA	1

BP-46 Boiler Pump



The BP-46 Boiler Pump is a heavy duty, full featured condensate pump for hot water applications up to 212 degrees F. It features a 46' lift, oil resistant tank and impeller, two inlet holes and 1/4 turn check valve. Additional features include high impact construction, large tank and is available in 120 and 230V models.



BP-46

CATALOG NO.	DESCRIPTION	UOM	ORDER MULTIPLE
BP-46	High Temperature Boiler Pump 115V, 46' Lift 212°F Condensate	EA	1
BP-46-230	High Temperature Boiler Pump 230V, 46' Lift 212°F Condensate	EA	1

ClearVue™ Mini Ductless System Pump

Featuring super quiet operation, specifically designed for ductless system installations, and including Variable Speed and Lift and Floatless Sensor™, ClearVue™ Mini is chock full of innovative features, and priced competitively.



CVMINI

CATALOG NO.	DESCRIPTION	UOM	ORDER MULTIPLE
CVMINI	ClearVue Mini - Ductless System Pump	EA	6

CP-22 Pumps

Suitable for use with condensate from HVAC equipment which produce condensate. 22' of lift compared to the typical 20'. Features include vibration dampening feet and motor mounts, metal hang tabs, four inlet holes, a clear indicator display, a float switch and check valve. Integrating the CP-22 into your system is easy. 1/4" quick connect terminals provide easy connection to the built in overflow switch. 2 terminals are provided allowing flexibility to connect air handler shut down. UL Listed File Numbers E253155 and E258186.



CP-22

CATALOG NO.	DESCRIPTION	UOM	ORDER MULTIPLE
CP-22	Condensate Pump – 120V	EA	6
CP-22T	Condensate Pump – 120V w/20' 3/8" Tube	EA	6
CP-22-230	Condensate Pump – 230V	EA	6
CP-22-230T	Condensate Pump – 230V w/20' 3/8" Tube	EA	6

CP-22 Low Profile Pumps

The new CP-22LP comes packed with all the same great features found in the CP-22, but now in a low profile package. This pump is only 4-3/8" tall so it's a good fit for those instances where space is at a premium. The shorter reservoir holds 1/3 gallon. Suitable for use with condensate up to 160 degree F. UL Listed File Numbers E253155 and E258186.



CP-22LP

CATALOG NO.	DESCRIPTION	UOM	ORDER MULTIPLE
CP-22LP	Condensate Pump – 120V – Low Profile	EA	6
CP-22LP-230	Condensate Pump – 230V – Low Profile	EA	6

General Purpose Pumps

The DiversiTech CP-16 condensate pump is an economical alternative that's based off of the proven CP-22 design. More compact than the CP-22, it's designed to lift to a maximum of 16 feet. The CP-16 shares many of the great features of the CP-22, including hang tabs, four inlet holes, float switch, overflow switch, and a check valve. UL Listed File Numbers E253155 and E258186.



CP-16

CATALOG NO.	DESCRIPTION	UOM	ORDER MULTIPLE
CP-16	Condensate Pump 16' Lift 120V	EA	6
CP-16-230	Condensate Pump 16' Lift 230V	EA	6

Pump Parts & Accessories

Check valve installs easily and prevents water from travelling backwards into the pump and overflowing.



CP-CV

CATALOG NO.	DESCRIPTION	UOM	ORDER MULTIPLE
CP-CV	Replacement Check Valve for CP-22	EA	1

CONDENSATE PUMPS cont'd

CP-MINI-L



DiversiTech's CP-MINI-L Mini Split Condensate Pump is a quiet, super compact, and feature rich pump that fits almost anywhere. Handles multiple voltages. Pump fits easily in most line set covers.



CP-MINI-L

CATALOG NO.	DESCRIPTION	UOM	ORDER MULTIPLE
CP-MINI-L	Low Profile Mini-Split Pump 115V-240V 50/60 Hz EA	EA	6

Mini-Split Pumps

DiversiTech's Mini-Split Condensate Pump is a quiet, super compact, and feature rich pump that fits almost anywhere. Compatible with all brands of mini-split units. Provides 24' of lift with 6' suction lift. Pump fits easily in most line set covers and includes all needed accessories. Available in 115V and 230V versions.



CP-M115

CATALOG NO.	DESCRIPTION	UOM	ORDER MULTIPLE
CP-M115	Mini-Split Condensate Pump, 115V	EA	10
CP-M230	Mini-Split Condensate Pump, 230V	EA	10

CONDENSATE DRAIN LINE SWITCHES

PAN MOUNTED SWITCHES

Wet Switch Flood Detector

A solid state control designed to help prevent flooding, damage to carpets, walls, furniture, ceilings, etc. Now has a built in test and reset button for easier installation. Turns system off when detecting moisture due to condensate or drain leaks. One or two drops will cause Wet Switch to turn off a unit, alerting a serviceman to a moisture problem. A lit LED indicates the Wet Switch is activated and has turned the unit off. Reset simply by drying the absorbent pad with a paper towel and pressing the reset switch. Connects to 24 VAC. More than one unit may be connected to a system. 2 amp contact rating. Simple 5 wire installation. Sales displays available. ETL Listed File Number 3146992. UL508 Approved.

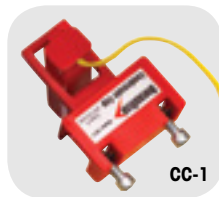


WS-1

CATALOG NO.	DESCRIPTION	UOM	ORDER MULTIPLE
WS-1	Wet Switch Flood Detector	EA	1

Condensate Cop™

Condensate Cop™ is a unique clamp on float switch intended for HVAC drain pan installation. The Condensate Cop™ features a large over clamping area that fits easily over the edge of all types of drain pans; including formed plastic and galvanized sheet metal. A separate float/probe assembly swivels to accommodate drain pans having sloped sides. The swivel action allows the installer to position the float switch for best operation and then clamp it into place. The probe features an inlet grill which prevents the float from being blocked or damaged by insulation or other debris. Sealed inside the probe is a magnetically actuated normally closed switch. The switch opens when rising water presents a potential flooding condition. Two wire connection for easy hook up to a thermostat "Y" (compressor) circuit. Provided complete with 5' (1.5 meter) leads, wire nuts, and clamping screws. Small size, 24V/1.5 amp NC reed switch. ETL Listed File Number 3166285. UL508 Approved.



CC-1

CATALOG NO.	DESCRIPTION	UOM	ORDER MULTIPLE
CC-1	Condensate Cop™ Drain Pan Switch	EA	12

CS1200 AC Shutoff Switch

The CS1200 is a fast installing, reliable, condensate overflow detection pan switch. Featuring a unique universal pan mount design to assure accurate detection in metal or plastic secondary drain pans. UL508 Approved.



CS1200

CATALOG NO.	DESCRIPTION	UOM	ORDER MULTIPLE
CS1200	CS1200 AC Shutoff Switch	EA	12

CS-3 Condensate Pan Switch

The CS-3 is a clip-on pan switch that use a magnetic reed switch for condensate overflow protection.



CS-3

CATALOG NO.	DESCRIPTION	UOM	ORDER MULTIPLE
CS-3	Condensate Switch – Clip	EA	12

Pipe Mounted Switches

DiversiTech Flood Prevention Switches are simple to install, easy to service and extremely reliable. As water level in the auxiliary or main drain pipe rises due to a clogged air conditioning condensate drain, the switch shuts off the system - thus preventing water from overflowing and causing damage to doors, walls and ceilings. At the heart of the switch is a durable yet precise magnetic reed switch. Constructed of materials that will not rust or stick, the switch operates smoothly every time. UL508 Approved.



CS-1

CS-2

CATALOG NO.	DESCRIPTION	UOM	ORDER MULTIPLE
CS-1	Condensate Switch – Tee	EA	12
CS-2	Condensate Switch – Elbow	EA	12

Universal Alarm

A universal low voltage alarm that can indicate possible system trouble. Use with the Wet Switch, SOS, Condensate Cop, CP 22 (all types) and all float switches on 24VAC control circuits. If an alarm condition exists, the homeowner can turn the alarm off with a "silence" button until service is obtained, however a red trouble LED will remain lit. Also features: easy 2 wire connection, label to print contractor information, and low current draw. Actuates at greater than 18V to prevent any false alarms due to low voltage. Includes 2 wire nuts, a sheet metal screw, and double sided tape for convenient installation options. Also includes instructions for wiring normally open switch systems (for the CP 22 or other condensate pumps).



UA-1

CATALOG NO.	DESCRIPTION	UOM	ORDER MULTIPLE
UA-1	Universal Alarm for 24VAC	EA	12

CLEARVUE™ TUBE & TRAPS

ClearVue™ Tube

Clear, schedule 40 PVC ideal for installing as condensate drain lines in other areas where seeing the inside of the tubing is helpful. ClearVue™ Tube makes it easy to quickly spot build up or obstructions in drain lines for faster troubleshooting. Available in 5ft lengths.



CATALOG NO.	DESCRIPTION	UOM	ORDER MULTIPLE
CV-TUBE	ClearVue™ Tube – 5' section	EA	50

Drain Trap Kits

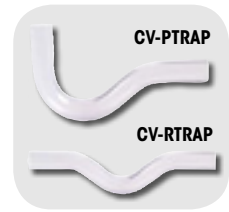
Drain trap kits feature clear PVC traps with multiple cleanouts for easy maintenance. Available in several fitting styles with or without float switch to match any installation need.



CATALOG NO.	DESCRIPTION	UOM	ORDER MULTIPLE
DTK113	Drain Trap Kit, 3/4 in Blow Molded	EA	1
DTK113B	Drain Trap Kit, 3/4 in, w/Brush	EA	1
DTK205	Drain Trap Kit, 3/4 in, Deep w/switch	EA	1
DTK207	Drain Trap Kit, 3/4 in, Standard w/switch and cross	EA	1
DTK210	Drain Trap Kit, 3/4 in, Standard w/switch	EA	1

ClearVue™ Traps

DiversiTech introduces new ClearVue™ P and R traps. These traps are made from smooth, clear PVC with no flat spots to restrict flow. With these new ClearVue™ traps its easy to see directly into them to detect blockages and prevent problems before they become severe. Ideal for installation in condensate drain lines.



CATALOG NO.	DESCRIPTION	UOM	ORDER MULTIPLE
CV-PTRAP	ClearVue™ 3/4" P trap	EA	25
CV-RTRAP	ClearVue™ 3/4" R trap	EA	25

Drain Trap Kit Cross Reference

DIVERSITECH CATALOG NO.	RECTORSEAL PART NO.
DTK113	EZT-113
DTK113B	EZT-113B
DTK205	EZT-205
DTK207	EZT-207
DTK210	EZT-210

CONDENSATE DRAIN LINE CLEANING

Drain Gun™ - SWOOSH CO₂ Cartridges

Clears condensate drains with a SWOOSH! A lightweight (3 oz.) portable tool designed to blow out drain lines instantly. New larger SWOOSH CO₂ cartridges now deliver 800 PSI of oil free air to clear the line. Each unit comes equipped with a tapered fitting to work on 3/8in. – 3/4in. drain openings. Flexible hose assembly maneuvers through cabinets, coils and hard to reach drains. Cartridges are environmentally safe and recyclable. No need for air or nitrogen tanks. Reduces labor costs and time on service calls.



CATALOG NO.	DESCRIPTION	UOM	ORDER MULTIPLE
GG-1	Drain Gun™ for A/C Condensate Lines	EA	6
GGC-12	SWOOSH CO ₂ Cartridges, pack of 12	PK	1
GGC-6	SWOOSH CO ₂ Cartridges, pack of 6	PK	1
GG-1A	Drain Gun™ Adapter Kit	EA	1
GG-1H	Drain Gun™ Hose Assembly	EA	1
GG-1TF	Drain Gun™ replacement tip	EA	1
GG-1BOR	Drain Gun™ bottom o-ring, pack of 5	PK	1
GG-1NHL	Drain Gun™ body, no hose	EA	1

DrainDawg™

The DrainDawg™ is a complete condensate drain cleaning kit, including the CT-475M deluxe nitrogen / CO₂ 0-475 psi regulator, the TG-10 & BS-25 ten foot hose and blowgun assembly, and the CW-15 fifteen inch whip hose. Also included is the AP-DD DrainDawg™ Accessory Fitting Kit which contains the DF-75 DrainDawg™ inflatable tip, the CK-141 3/4"-1" cone fitting, the FA-02 CO₂ to nitrogen adapter, the QN-S3 needle tip, and the TC-25 tire chuck. Made in USA.



CATALOG NO.	DESCRIPTION	UOM	ORDER MULTIPLE
CB-2	DrainDawg™ Kit	EA	3

DrainKat™

The DrainKat™ is an over the shoulder refillable, nitrogen or CO₂ mini drain cleaning kit. Featuring a small cylinder that holds 9 cubic feet of nitrogen or 2-1/2 pounds of CO₂. The cylinder includes an integral mounted regulator for quick and easy adjustment of discharge pressure. Get exactly the amount of pressure you need with a quick adjustment on the regulator. Furnished complete with an 87" hose and drain gun kit, the CW-15 whip hose, and the AP-DK DrainKat™ Accessory Fitting Kit which contains the DF-75 DrainDawg™ inflatable tip, the CB-03 3/4"-1" cone fitting, the FA-01 male to male CO₂ to nitrogen adapter, the FA-03 CO₂ trans-fill adapter, and the the QN-S3 needle tip. Made in the USA.



CATALOG NO.	DESCRIPTION	UOM	ORDER MULTIPLE
MBK-6	DrainKat™ Kit	EA	2

CONDENSATE DRAIN LINE CLEANING cont'd

A/C Easy Tee®

A/C Easy Tee® is a simple, inexpensive way to comply with the International Mechanical Code M32-12. It provides a Condensate Drain Service Port that is flexible and easy to use with nitrogen, water, or shop vac. A/C Easy Tee® has no valve or moving parts that could fail.

CATALOG NO.	DESCRIPTION	UOM	ORDER MULTIPLE
ET75	A/C Easy Tee®	EA	20
ET75-KIT	A/C Easy Tee® Kit - 2 Tees and ST75	EA	6
ST75	Service Tool Kit	EA	6



Drain Dawg™ and Drain Kat™ Fittings

The Drain Dawg™ and Drain Kat™ products are compatible with a series of fittings to connect to condensate drain lines and hoses. The fittings are available individually, or as kits for the Drain Dawg™ and Drain Kat™.

CATALOG NO.	DESCRIPTION	UOM	ORDER MULTIPLE
AP-DD	Drain Dawg™ Accessory Pack	EA	1
AP-DK	Drain Kat™ Accessory Pack	EA	1
BS-25	Blow gun with safety tip for Drain Dawg™ or Drain Kat™	EA	1
CB-03	3/4 in. cone tip with female thread for Drain Dawg™ or Drain Kat™ blow gun	EA	1
CK-141	3/4 in. cone with male thread for use with whip hose for Drain Dawg™ or Drain Kat™	EA	1
CW-15	15 in. whip hose for Drain Dawg™ or Drain Kat™	EA	1
DF-75	Drain Dawg™ inflatable tip for drain line blowout	EA	1
FA-01	Nitrogen to CO2 adapter, male by male for Drain Kat™	EA	1
FA-02	Nitrogen to CO2 adapter, female by female for Drain Dawg™	EA	1
FA-03	CO2 transfill adapter for Drain Kat™	EA	1
QN-S3	Needle tip with female thread for Drain Dawg™ or Drain Kat™ blow gun	EA	1
TC-25	Tire chuck for Drain Dawg™	EA	1
TG-10	120 in. blow gun hose for Drain Dawg™	EA	1
TG-87A	87 in. blow gun hose for Drain Kat™	EA	1



CONDENSATE DRAIN PANS, FITTINGS, ADAPTERS

A/C Secondary Condensate Drain Pans

Rolled edges for durability, ribbed bottoms for rigidity, and reinforced corners for strength. 3/4in. PVC fittings are included with each pan. No seams, no rust, and no leakage. ABS materials will not put out toxic smoke. Available in over 20 convenient sizes. Five pans per clip.

CATALOG NO.	BOTTOM DIMENSION		OVERALL DIMENSION		DEPTH		UOM	ORDER MULTIPLE
	IN.	CM.	IN.	CM.	IN.	CM.		
6-1838L	18" x 38"	46 x 97	20" x 40"	51 x 102	2"	5	EA	5
6-1838S	18" x 38"	46 x 97	20" x 40"	51 x 102	2"	5	EA	5
6-1846S	18" x 46"	46 x 117	20" x 48"	51 x 122	2"	5	EA	5
6-2424L	24" x 24"	61 x 61	26" x 26"	66 x 66	2"	5	EA	5
6-2626L	26" x 26"	66 x 66	28" x 28"	71 x 71	2"	5	EA	5
6-2739L	27" x 39"	69 x 99	29" x 41"	74 x 104	2"	5	EA	5
6-2748L	27" x 48"	69 x 122	29" x 50"	74 x 127	2"	5	EA	5
6-2748S	27" x 48"	69 x 122	29" x 50"	74 x 127	2"	5	EA	5
6-2748L-100	27" x 48"	69 x 122	29" x 50"	74 x 127	2"	5	EA	100
6-2763L	27" x 63"	69 x 160	29" x 65"	74 x 165	2"	5	EA	5
6-2763S	27" x 63"	69 x 160	29" x 65"	74 x 165	2"	5	EA	5
6-3030L	30" x 30"	76 x 76	32" x 32"	81 x 81	2"	5	EA	5
6-3050L	30" x 50"	76 x 127	32" x 52"	81 x 132	2"	5	EA	5
6-3050S	30" x 50"	76 x 127	32" x 52"	81 x 132	2"	5	EA	5
6-3060L	30" x 60"	76 x 152	32" x 62"	81 x 157	2"	5	EA	5
6-3060S	30" x 60"	76 x 152	32" x 62"	81 x 157	2"	5	EA	5
6-3060L-100	30" x 60"	76 x 152	32" x 62"	81 x 157	2"	5	EA	100
6-3263L	32" x 63"	81 x 160	34" x 65"	86 x 165	2"	5	EA	5
6-3263S	32" x 63"	81 x 160	34" x 65"	86 x 165	2"	5	EA	5
6-3636L	36" x 36"	91 x 91	38" x 38"	97 x 97	2"	5	EA	5
6-3660L	36" x 60"	91 x 152	38" x 62"	97 x 157	2"	5	EA	5
6-3660S	36" x 60"	91 x 152	38" x 62"	97 x 157	2"	5	EA	5

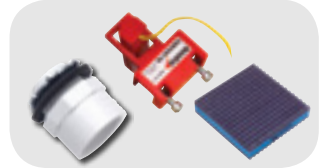
L = Drain Line Outlets in Long Side S = Drain Line Outlets in Short Side



CONDENSATE DRAIN PANS, FITTINGS, ADAPTERS cont'd

High Rise Pans™

The High Rise Pan™ is an innovative new plastic drain pan design which allows placement of an air handler 2 3/4in. above the outside lip of the pan without the need for separate, cumbersome mounting blocks. The pan has a molded in network of risers to give a 5in. lift. The risers are positioned to accept a wide variety of air handler sizes. Each riser has a specially shaped area at each end to accommodate a 2in. x 2in. anti vibration pad which allows for quiet operation at all times. Other features include heavy duty reinforcement throughout to give plenty of support as well as rolled edges for durability. One piece plastic construction ensures no rust, leaks, or seams to split. Each High Rise Pan™ comes complete with a Condensate Cop™ float switch, 6 EVA™ anti vibration pads, and 1 3/4in. PVC male adapter. Installation is straightforward and hassle free.



CATALOG NO.	DESCRIPTION	UOM	ORDER MULTIPLE
6-HK2748	High Rise Pan™ 27" x 48" with Installation Kit including: One CC-1 Condensate Cop, Six MP-2E 2" x 2" EVA™ Pads, One 6-1 3/4" PVC male adapter	EA	5
6-HK2748-1	Single Pack Kit – High Rise Pan™ 27" x 48" with Installation Kit including: One CC-1 Condensate Cop, Six MP-2E 2" x 2" EVA™ Pads, One 6-1 3/4" PVC male adapter	EA	1
6-HK2766	High Rise Pan™ 27" x 66" with Installation Kit including: One CC-1 Condensate Cop, Six MP-2E 2" x 2" EVA™ Pads, One 6-1 3/4" PVC male adapter	EA	5
6-HK2766-1	Single Pack Kit – High Rise Pan™ 27" x 66" with Installation Kit including: One CC-1 Condensate Cop, Six MP-2E 2" x 2" EVA™ Pads, One 6-1 3/4" PVC male adapter	EA	1
6-HK3050	High Rise Pan™ 30" x 50" with Installation Kit including: One CC-1 Condensate Cop, Six MP-2E 2" x 2" EVA™ Pads, One 6-1 3/4" PVC male adapter	EA	5
6-HK3050-1	Single Pack Kit – High Rise Pan™ 30" x 50" with Installation Kit including: One CC-1 Condensate Cop, Six MP-2E 2" x 2" EVA™ Pads, One 6-1 3/4" PVC male adapter	EA	1
6-HK3060	High Rise Pan™ 30" x 60" with Installation Kit including: One CC-1 Condensate Cop, Six MP-2E 2" x 2" EVA™ Pads, One 6-1 3/4" PVC male adapter	EA	5
6-HK3060-1	Single Pack Kit – High Rise Pan™ 30" x 60" with Installation Kit including: One CC-1 Condensate Cop, Six MP-2E 2" x 2" EVA™ Pads, One 6-1 3/4" PVC male adapter	EA	1

Heavy Duty High Rise Pans

A thicker, tougher version of our regular High Rise Pans. Each pan includes a kit with one CS1200 float switch, six EVA™ anti-vibration pads and one 3/4" PVC male adapter.



CATALOG NO.	DESCRIPTION	UOM	ORDER MULTIPLE
6-HK3050HD	Heavy Duty High Rise Pan 30" x 50"	EA	5
6-HK3060HD	Heavy Duty High Rise Pan 30" x 60"	EA	5
6-HK3070HD	Heavy Duty High Rise Pan 30" x 70"	EA	5

Furnace Pans

DiversiTech furnace pans are designed specifically for furnace installations. Their one piece construction provides strength and durability for any furnace installation.



CATALOG NO.	DESCRIPTION	UOM	ORDER MULTIPLE
6-HK3364FUR	Furnace Pan – 33" x 64" with installation kit	EA	
6-HK3378FUR	Furnace Pan – 33" x 78" with installation kit	EA	

Metal Drain Pan

The ultimate in drain pan design — tailored for easy distribution and installation. Full of features to make life easier on both the distributor and the contractor. Seamless, one piece metal construction with rolled edges on all sides for maximum safety and integrity. Nestable as well — a stack of 70 pans is only a foot high! Once on site, you'll never have to return to the distributor for missing parts. The fittings are packaged with the pan for simple and efficient installation. Choose between two possible drain outlet positions and install with confidence.



CATALOG NO.	DESCRIPTION	UOM	ORDER MULTIPLE
6-M2748	26 Gauge Metal Drain Pan – 27" x 48"	EA	5
6-M2763	26 Gauge Metal Drain Pan – 27" x 63"	EA	5
6-M3030	26 Gauge Metal Drain Pan – 30" x 30"	EA	5
6-M3050	26 Gauge Metal Drain Pan – 30" x 50"	EA	5
6-M3060	26 Gauge Metal Drain Pan – 30" x 60"	EA	5
6-M3263	26 Gauge Metal Drain Pan – 32" x 63"	EA	5

A/C Condensate Drain Pan Fittings

The Drain Pan Fittings are designed to be used with our Condensate Drain Pans.



CATALOG NO.	DESCRIPTION	UOM	ORDER MULTIPLE
6-1	3/4" Slip	EA	50
6-2	1" Slip	EA	50
6-3	3/4" Slip with Plastic Nut	EA	50
6-5	3/4" Female Pipe Thread	EA	50

Water Heater Pans

Aluminum water heater pans can be installed under gas or electric water heaters to protect from water damage. Includes a 1" PVC drain fittings to allow for connection to indirect drain. Each pan is manufactured from .032 in. prime aluminum with a pre-cut side opening to accommodate a drain fitting. Pan depth is a minimum 2.5 in.



CATALOG NO.	DESCRIPTION	UOM	ORDER MULTIPLE
6-M22	Aluminum Water Heater Pan - 22 in.	EA	6
6-M24	Aluminum Water Heater Pan - 24 in.	EA	6
6-M26	Aluminum Water Heater Pan - 26 in.	EA	6
6-M30	Aluminum Water Heater Pan - 30 in.	EA	6

CONDENSATE DRAIN PANS, FITTINGS, ADAPTERS cont'd

Mini-Split Drain Adapters

Mini Split fan units — either ceiling cassettes or wall cassettes — typically have a unique (metric) drain line fitting. DiversiTech's adapters convert this metric fitting to standard drain line tubing sizes.



CATALOG NO.	DESCRIPTION	UOM	ORDER MULTIPLE
230-DLFY	Mini-Split Drain Line Wye	EA	1
230-DLF16	16mm Mini-Split Drain Line Adapter	EA	1
230-DLF18	18mm Mini-Split Drain Line Adapter	EA	1
230-DLF20	20mm Mini-Split Drain Line Adapter	EA	1
230-DLF25	25mm Mini-Split Drain Line Adapter	EA	1
230-DLF32	32mm Mini-Split Drain Line Adapter	EA	1

Condensate Drain Pans

When a mini split system operates in heat pump mode, the outdoor coil becomes the evaporator coil. Typically, condensation generates from the evaporator coil. In certain installations, the condenser coil may be mounted overhead on brackets affixed to a wall. In these overhead applications, dripping condensation may be a nuisance. Condensate drain pans bolt onto the condenser mounting brackets, and the drain line can be plumbed to a nearby drain location. Furnished complete with all mounting hardware and drain pan outlet, condensate drain pans are available in either plastic or powder coated steel.



CATALOG NO.	DESCRIPTION	UOM	ORDER MULTIPLE
230-DPPL	Poly Condensate Drain Pan (Large)	EA	1
230-DPPM	Poly Condensate Drain Pan (Medium)	EA	1

DRAIN LINE, TUBING

Mini-Split Condensate Drain Line

A unique drain line for mini-split units. This large diameter drain line is typical for mini-split installations. Furnished in 160 feet lengths with cut marks every 3.28 feet. Accommodates 5/8" and 3/4" connections.



CATALOG NO.	DESCRIPTION	UOM	ORDER MULTIPLE
230-DL16	5/8" ID Mini-Split Drain Line	EA	160'
230-DL16-20	5/8" ID Mini-Split Drain Line – 20' section	EA	1

Clear Vinyl Tubing

Clear vinyl hose applications include: air conditioning and refrigeration condensate drains, condensate pump discharge lines and humidifier overflows.



CATALOG NO.	DESCRIPTION	UOM	ORDER MULTIPLE
7-316	3/16" ID Clear Vinyl Tubing – 100' section	EA	100'
7-CVMINITUBE	3/16" ID CVMINI Tubing – 100' section	EA	100'
7-14	1/4" ID Clear Vinyl Tubing – 100' section	EA	100'
7-38	3/8" ID Clear Vinyl Tubing – 100' section	EA	100'
7-12	1/2" ID Clear Vinyl Tubing – 100' section	EA	100'
7-58	5/8" ID Clear Vinyl Tubing – 100' section	EA	100'
7-34	3/4" ID Clear Vinyl Tubing – 100' section	EA	100'
7-78	7/8" ID Clear Vinyl Tubing – 100' section	EA	50'
7-10	1" ID Clear Vinyl Tubing – 100' section	EA	50'

Gorilla Tube® Clear Vinyl Tubing

Applications include: air conditioning and refrigeration condensate drains, condensate pump discharge lines, and humidifier overflows. Several sizes from 1/4" to 1" diameter. Non-toxic clear vinyl chloride.

Select Gorilla Tube® over standard clear vinyl tube because:

- Extra rigid design resists crimping and kinking due to durometer value of 80 (Shore A) and thicker wall
- Maximum service temperature 140°F (60°C)
- Better performance in cold weather climates.



CATALOG NO.	DESCRIPTION	UOM	ORDER MULTIPLE
7-14P	1/4", .250" I.D., .360" O.D., .055 wall thickness	EA	100'
7-38P	3/8", .375" I.D., .495" O.D., .060 wall thickness	EA	100'
7-12P	1/2", .500" I.D., .631" O.D., .066 wall thickness	EA	100'
7-58P	5/8", .625" I.D., .771" O.D., .073 wall thickness	EA	100'
7-34P	3/4", .750" I.D., .913" O.D., .082 wall thickness	EA	100'
7-78P	7/8", .875" I.D., 1.050" O.D., .088 wall thickness	EA	50'
7-10P	1", 1.000" I.D., 1.215" O.D., .108 wall thickness	EA	50'

Braided Clear Vinyl Tubing

Braided clear vinyl offers better strength and sealing than regular clear vinyl tubing and is very kink-resistant.



CATALOG NO.	DESCRIPTION	UOM	ORDER MULTIPLE
7-14B	1/4" ID Braided Clear Vinyl Tubing – 100' section	EA	100'
7-38B	3/8" ID Braided Clear Vinyl Tubing – 100' section	EA	100'
7-12B	1/2" ID Braided Clear Vinyl Tubing – 100' section	EA	100'
7-58B	5/8" ID Braided Clear Vinyl Tubing – 100' section	EA	100'
7-34B	3/4" ID Braided Clear Vinyl Tubing – 100' section	EA	100'

TAPES

Cork Insulation Tape

Adheres firmly to all metals. Use on hot or cold pipes to stop condensation and drips.



CATALOG NO.	DESCRIPTION	UOM	ORDER MULTIPLE
6-330	Cork Insulation Tape – 1/8" x 2" x 30' Roll – Black	EA	12

Foam Insulation Tape

Superior self-adhesive foam tape can be used on hot or cold pipes. Fits well around valves and fittings. Easily cut and molded.



CATALOG NO.	DESCRIPTION	UOM	ORDER MULTIPLE
6-9718	Foam Insulation Tape – 1/8" x 2" x 30' Roll – Black	EA	12

PTFE Tape

Made of pure white PTFE. Non toxic. For use with chemicals, solvents, oxygen, and on food lines. Withstands up to 2000 psi of pressure.



CATALOG NO.	DESCRIPTION	UOM	ORDER MULTIPLE
6-733	Teflon Tape – 1/2" x 520"	EA	100
6-734	Teflon Tape – 1/2" x 260"	EA	100
6-735	Teflon Tape – 3/4" x 520"	EA	100
6-736	Teflon Tape – 3/4" x 260"	EA	100