

## Replacement Parts

January, 2013

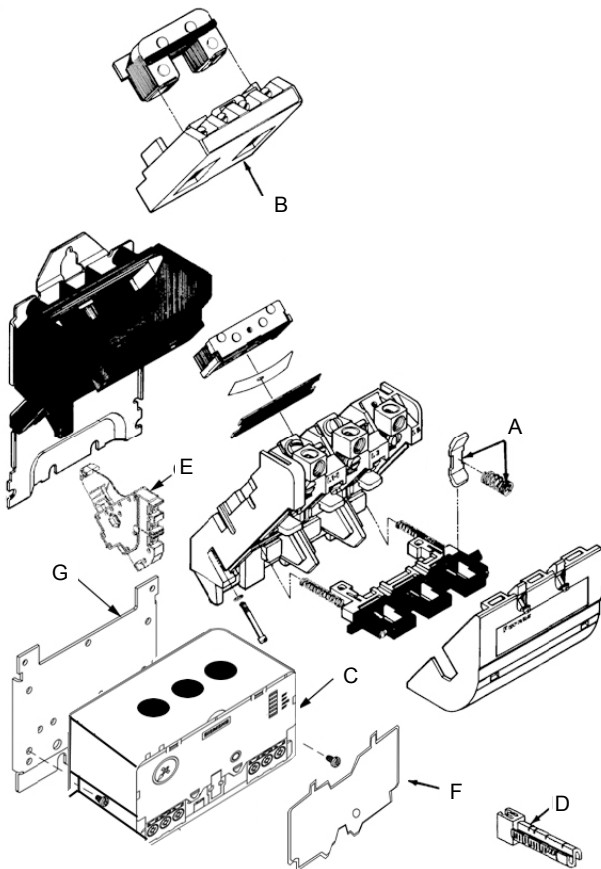
### IMPORTANT


THESE INSTRUCTIONS DO NOT PURPORT TO COVER ALL DETAILS OR VARIATIONS IN EQUIPMENT, NOR TO PROVIDE FOR EVERY POSSIBLE CONTINGENCY TO BE MET IN CONNECTION WITH INSTALLATION, OPERATION OR MAINTENANCE. SHOULD FURTHER INFORMATION BE DESIRED OR SHOULD PARTICULAR PROBLEMS ARISE WHICH ARE NOT COVERED SUFFICIENTLY FOR THE PURCHASER'S PURPOSES, THE MATTER SHOULD BE REFERRED TO THE LOCAL SIEMENS SALES OFFICE.

THE CONTENTS OF THIS INSTRUCTION MANUAL SHALL NOT BECOME PART OF OR MODIFY ANY PRIOR OR EXISTING AGREEMENT, COMMITMENT OR RELATIONSHIP. THE SALES CONTRACT CONTAINS THE ENTIRE OBLIGATION OF SIEMENS. THE WARRANTY CONTAINED IN THE CONTRACT BETWEEN THE PARTIES IS THE SOLE WARRANTY OF SIEMENS. ANY STATEMENTS CONTAINED HEREIN DO NOT CREATE NEW WARRANTIES OR MODIFY THE EXISTING WARRANTY.

E87010-A0007-T010-A1-14XU

ESP200  
Class 14 Starters  
Size 3 & 3½  
14HU, 14IU





**WARNING**

Hazardous voltage.  
Can cause death or serious injury.

Disconnect main power and control voltages before installation or maintenance on this equipment.

Item	Part Description	Part Number
A	Contacts & Spring, One Complete Pole Power Pole	Size 3 75HF14
		Size 3½ 75IF14
B	Coil <b>60 Hertz</b>	<b>50 Hertz</b>
		120v 75D73251F
		110-120v/220-240v 110v/190-220v 75D73251A
		220-240v/440-480v 190-220/380-440v 75D73251C
		550-600v 550v 75D73251E

For other voltages specify the number stamped on the coil.

Item	Part Description	Part Number
C	Solid State Overload Relays (Plate not included)	Size Amps Cat#
		3 25-100 48BTG3S00
		3½ 50-200 48BUT3S00
D	Reset Extender	4ERSA9
E	Auxiliary Contact	NO 49AB10
		NC 49AB01
F	Tamper Resistant Cover	49ASTC1
G	Mounting Plate with (2) Mounting Screws	49ASMP3

NOTE: When ordering replacement parts, give catalog number of control, and part name and number.