

EconoMaster®



Replacement Motors for
Residential and Light Commercial
HVAC/R Applications

A Regal Brand

REGAL

FEATURES AND BENEFITS



New Colorful Carton and label

Bright, colorful, easy to read carton and label make the motor easy to identify on the shelf. The motors part number, horsepower, voltage, RPM and amp ratings are all visible at a glance.



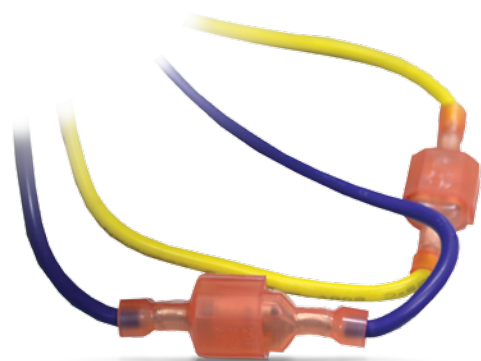
Carton Handle

The motor carton has been designed with an innovative handle to make the motors much easier to carry from the counter to the truck.



High Torque Designs

All EconoMaster motors are designed to meet NEMA torque standards and are field proven designs.



Reverse Plug

The electrical reversing terminals make changing rotation a snap.



Bearing System

All open blower motors have self-aligning sleeve bearings that are lubricated for the life of the motor. All of the totally enclosed condenser fan motors have double shielded, rugged ball bearings for extended life in outdoor applications.



Lead Material

Tough 125°C XLPE 18 AWG lead wire is used on all motors. Standard color codes are used to make connections on the job site quick and easy.

48 FRAME CONDENSER FAN MOTORS



Features

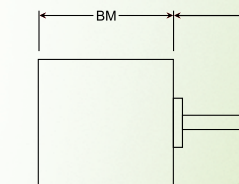
- > Electrically Reversible
- > Energy Efficient
- > 60°C Ambient
- > Single Phase
- > UL/CSA Approved
- > 48 Frame
- > Class "B" Insulation
- > Auto Protector
- > 26" Lead Length
- > 60 Hz
- > Rheem Mounting Holes with Screws Supplied

Single Speed - Totally Enclosed - Condenser Fan

| Stock No. | HP | RPM/SPD | Volts | Rated Amps | Bearings | "BM" Dim. | Shaft Size | Capacitor (MFD) 370V |
|-----------|-----|---------|---------|------------|----------|-----------|------------|----------------------|
| EM3403 | 1/6 | 825 | 208-230 | 1.0-1.1 | Ball | 4.11 | 1/2 x 6" | 5 |
| EM3404 | 1/4 | 825 | 208-230 | 1.3-1.4 | Ball | 4.61 | 1/2 x 6" | 5 |
| EM3405 | 1/3 | 825 | 208-230 | 1.6-1.8 | Ball | 5.11 | 1/2 x 6" | 7.5 |
| EM3746 | 1/2 | 825 | 208-230 | 2.2-2.5 | Ball | 5.61 | 1/2 x 6" | 10 |
| EM3727 | 1/6 | 1075 | 208-230 | 1.0-1.1 | Ball | 3.86 | 1/2 x 6" | 5 |
| EM3728 | 1/4 | 1075 | 208-230 | 1.8-2.0 | Ball | 4.11 | 1/2 x 6" | 5 |
| EM3729 | 1/3 | 1075 | 208-230 | 2.2-2.5 | Ball | 4.61 | 1/2 x 6" | 7.5 |
| EM3730 | 1/2 | 1075 | 208-230 | 3.0-3.5 | Ball | 5.11 | 1/2 x 6" | 10 |
| EM3731 | 3/4 | 1075 | 208-230 | 4.6-5.3 | Ball | 5.36 | 1/2 x 6" | 10 |

Cross Reference Guide

| EconoMaster Stock No. | Wagner/Diversitech | Smart Electric | Mars | JARD |
|-----------------------|--------------------|----------------|-------------|-------|
| EM3403 | n/a | n/a | 10403/10203 | 22403 |
| EM3404 | WG840204 | n/a | 10404/10204 | 22404 |
| EM3405 | WG840205 | n/a | 10405/10205 | 22405 |
| EM3746 | n/a | n/a | 10746 | 22746 |
| EM3727 | WG840727 | SE3727 | 10727/10732 | 22727 |
| EM3728 | WG840728 | SE3728 | 10728/10733 | 22728 |
| EM3729 | WG840729 | SE3729 | 10729/10734 | 22729 |
| EM3730 | WG840730 | SE3730 | 10730/10735 | 22730 |
| EM3731 | WG840731 | SE3731 | 10731/10736 | 22731 |



48 FRAME FURNACE BLOWER MOTORS

Features

- › Electrically Reversible
- › Energy Efficient
- › 40°C Ambient
- › Single Phase
- › 48 Frame
- › Class "B" Insulation
- › Auto Protector
- › 26" Lead Length
- › UL/CSA Approved

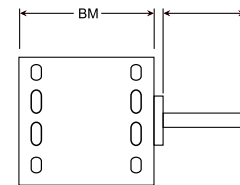


Three Speed - Blower Motors

| Stock No. | HP | RPM/SPD | Volts | Rated Amps | Bearings | "BM" Dim. | Shaft Size | Capacitor (MFD) 370V |
|-----------|-----|---------|---------|--------------|----------|-----------|------------|----------------------|
| EM3583 | 1/4 | 1075/3 | 115 | 4.2-2.4-2.0 | Sleeve | 3.99 | 1/2 x 4" | 5 |
| EM3584 | 1/4 | 1075/3 | 208-230 | 2.0-1.1-0.9 | Sleeve | 3.99 | 1/2 x 4" | 5 |
| EM3585 | 1/3 | 1075/3 | 115 | 5.5-3.0-2.0 | Sleeve | 4.36 | 1/2 x 4" | 7.5 |
| EM3586 | 1/3 | 1075/3 | 208-230 | 2.8-1.7-1.2 | Sleeve | 4.36 | 1/2 x 4" | 5 |
| EM3587 | 1/2 | 1075/3 | 115 | 7.5-4.5-3.0 | Sleeve | 4.86 | 1/2 x 4" | 10 |
| EM3588 | 1/2 | 1075/3 | 208-230 | 3.6-2.3-1.6 | Sleeve | 4.86 | 1/2 x 4" | 10 |
| EM3589 | 3/4 | 1075/3 | 115 | 10.2-7.3-4.5 | Sleeve | 5.36 | 1/2 x 4" | 15 |
| EM3590 | 3/4 | 1075/3 | 208-230 | 5.5-4.5-3.2 | Sleeve | 5.36 | 1/2 x 4" | 10 |

Cross Reference Guide

| EconoMaster Stock No. | Wagner/Diversitech | Smart Electric | Mars | JARD |
|-----------------------|--------------------|----------------|-------|-------|
| EM3583 | WG840583 | SE3583 | 10583 | 22583 |
| EM3584 | WG840584 | SE3584 | 10584 | 22584 |
| EM3585 | WG840585 | SE3585 | 10585 | 22585 |
| EM3586 | WG840586 | SE3586 | 10586 | 22586 |
| EM3587 | WG840587 | SE3587 | 10587 | 22587 |
| EM3588 | WG840588 | SE3588 | 10588 | 22588 |
| EM3589 | WG840589 | SE3589 | 10589 | 22589 |
| EM3590 | WG840590 | SE3590 | 10590 | 22590 |



48 FRAME CONDENSER FAN MOTORS

Features

- › 70°C Ambient
- › Class "F" Insulation
- › Electrically Reversible
- › Energy Efficient
- › Single Phase
- › 48 Frame
- › Auto Protector
- › 26" Lead Length
- › UL/CSA Approved
- › Rheem Mounting Holes with Screws Supplied



HI Temp™ 70°C – Single Speed – Totally Enclosed – Condenser Fans

| Stock No. | HP | RPM/SPD | Volts | Rated Amps | Bearings | "BM" Dim. | Shaft Size | Capacitor (MFD) 370V |
|-----------|-----|---------|---------|------------|----------|-----------|------------|----------------------|
| EM3403F | 1/6 | 825 | 208-230 | 1.0 - 1.1 | Ball | 4.11 | 1/2 x 6" | 5 |
| EM3404F | 1/4 | 825 | 208-230 | 1.3 - 1.4 | Ball | 4.61 | 1/2 x 6" | 5 |
| EM3405F | 1/3 | 825 | 208-230 | 1.6 - 1.8 | Ball | 5.11 | 1/2 x 6" | 7.5 |
| EM3746F | 1/2 | 825 | 208-230 | 2.2 - 2.5 | Ball | 5.61 | 1/2 x 6" | 10 |
| EM3727F | 1/6 | 1075 | 208-230 | 1.0 - 1.1 | Ball | 3.86 | 1/2 x 6" | 5 |
| EM3728F | 1/4 | 1075 | 208-230 | 1.8 - 2.0 | Ball | 4.11 | 1/2 x 6" | 5 |
| EM3729F | 1/3 | 1075 | 208-230 | 2.2 - 2.5 | Ball | 4.61 | 1/2 x 6" | 7.5 |
| EM3730F | 1/2 | 1075 | 208-230 | 3.0 - 3.5 | Ball | 5.11 | 1/2 x 6" | 10 |
| EM3731F | 3/4 | 1075 | 208-230 | 4.6 - 5.3 | Ball | 5.36 | 1/2 x 6" | 10 |
| EM3736F | 1/4 | 1075 | 460 | 1.0 | Ball | 4.74 | 1/2 x 6" | 7.5 |
| EM3737F | 1/3 | 1075 | 460 | 1.3 | Ball | 5.24 | 1/2 x 6" | 7.5 |
| EM3738F | 1/2 | 1075 | 460 | 1.5 | Ball | 5.61 | 1/2 x 6" | 10 |
| EM3739F | 3/4 | 1075 | 460 | 2.8 | Ball | 5.61 | 1/2 x 6" | 15 |

HI Temp™ 70°C – Multi-Horsepower – Totally Enclosed – Condenser Fans – 36" Lead Length

| | | | | | | | | |
|---------|---------|--------|---------|----------|------|------|----------|------------|
| EM3469F | 1/3-1/5 | 825/2 | 208-230 | 1.9, 1.2 | Ball | 5.24 | 1/2 x 6" | 10 or 7.5 |
| EM3465F | 1/3-1/5 | 1075/2 | 208-230 | 2.6, 1.4 | Ball | 4.86 | 1/2 x 6" | 7.5 or 5 |
| EM3468F | 1/2-1/4 | 1075/2 | 208-230 | 3.6, 1.7 | Ball | 5.24 | 1/2 x 6" | 12.5 or 10 |

4-in-1® 70°C – Simple, Two Wire Connection – 48" Lead Length

| | | | | | | | | |
|---------|---------|------|---------|-----------|------|------|------------|-----|
| EM3459F | 1/3-1/8 | 825 | 208-230 | 1.8 - 2.0 | Ball | 4.86 | 1/2 x 6.7" | 7.5 |
| EM3458F | 1/3-1/6 | 1075 | 208-230 | 1.8 - 2.0 | Ball | 4.11 | 1/2 x 6.7" | 7.5 |
| EM3209F | 1/3-1/8 | 825 | 460 | 1.0 | Ball | 5.24 | 1/2 x 6" | 7.5 |

Cross Reference Guide

| EconoMaster Stock No. | Wagner/Diversitech | Smart Electric | Mars | EconoMaster Stock No. | Wagner/Diversitech | Smart Electric | Mars |
|-----------------------|--------------------|----------------|-------|-----------------------|--------------------|----------------|-------|
| EM3403F | n/a | n/a | 20403 | EM3736F | n/a | n/a | 20836 |
| EM3404F | WG840204HT | n/a | 20404 | EM3737F | n/a | n/a | 20837 |
| EM3405F | WG840205HT | n/a | 20405 | EM3738F | n/a | n/a | 20838 |
| EM3746F | n/a | n/a | 20746 | EM3739F | n/a | n/a | 20842 |
| EM3727F | n/a | n/a | 20727 | EM3469F | n/a | n/a | 20469 |
| EM3728F | WG840728HT | n/a | 20728 | EM3465F | n/a | n/a | 20465 |
| EM3729F | WG840729HT | n/a | 20729 | EM3468F | n/a | n/a | 20468 |
| EM3730F | WG840730HT | n/a | 20730 | EM3459F | n/a | n/a | 20459 |
| EM3731F | WG840731HT | n/a | 20731 | EM3458F | n/a | n/a | 20458 |
| | | | | EM3209F | n/a | n/a | 20884 |

48 FRAME MULTI-HORSEPOWER MOTORS

Features

- > Electrically Reversible
- > Energy Efficient
- > 60°C Ambient
- > Single Phase
- > 48 Frame
- > UL/CSA Approved
- > Class "B" Insulation
- > Auto Protector
- > 60 Hz
- > 36" Lead Length
- > Rheem Mounting Holes with Screws Supplied



Multi-horsepower - Totally Enclosed - Condenser Fan

| Stock No. | Replaces HP | RPM/ SPD | Volts | Rated Amps | Bearings | "BM" Dim. | Shaft Size | Capacitor (MFD) 370V |
|-----------|-------------|----------|---------|------------|----------|-----------|------------|----------------------|
| EM3469 | 1/3-1/5 | 825/2 | 208-230 | 1.9,1.2 | Ball | 5.24 | 1/2 x 6" | 10 or 7.5 |
| EM3465 | 1/3-1/5 | 1075/2 | 208-230 | 2.6,1.4 | Ball | 4.86 | 1/2 x 6" | 7.5 or 5 |
| EM3468 | 1/2-1/4 | 1075/2 | 208-230 | 3.6,1.7 | Ball | 5.24 | 1/2 x 6" | 12.5 or 10 |

4-in-1 – Simple, two wire connection – 48" lead length

| | | | | | | | | |
|--------|---------|------|---------|---------|------|------|------------|-----|
| EM3459 | 1/3-1/8 | 825 | 208-230 | 1.8-2.0 | Ball | 4.86 | 1/2 x 6.7" | 7.5 |
| EM3458 | 1/3-1/6 | 1075 | 208-230 | 1.8-2.0 | Ball | 4.11 | 1/2 x 6.7" | 7.5 |

Features

- > Electrically Reversible
- > Energy Efficient
- > 40°C Ambient
- > Single Phase
- > 48 Frame
- > UL/CSA Approved
- > Class "B" Insulation
- > Auto Protector
- > 38" Lead Length
- > Rheem Holes in Shell

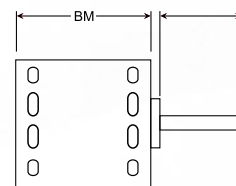
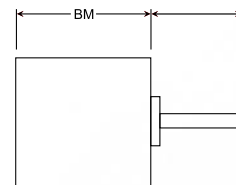


Four Speed - Multi-horsepower - Blower Motors

| Stock No. | HP | Volts | Rated Amps | Bearings | RPM/ SPD | "BM" Dim. | Shaft Size | Capacitor (MFD) 370V |
|-----------|---------|---------|------------|----------|----------|-----------|------------|----------------------|
| EM3463 | 1/2-1/6 | 115 | 7.0 | Sleeve | 1075/4 | 4.86 | 1/2 x 4.5" | 10, 7.5, 5 |
| EM3464 | 1/2-1/6 | 208-230 | 3.9 | Sleeve | 1075/4 | 4.86 | 1/2 x 4.5" | 10, 7.5, 5 |
| EM3466 | 3/4-1/5 | 115 | 9.1 | Sleeve | 1075/4 | 4.86 | 1/2 x 4.5" | 10, 7.5, 5 |
| EM3467 | 3/4-1/5 | 208-230 | 3.9 | Sleeve | 1075/4 | 4.86 | 1/2 x 4.5" | 10, 7.5, 5 |

Cross Reference Guide

| EconoMaster Stock No. | Wagner/Diversitech | Smart Electric | Mars | JARD |
|-----------------------|--------------------|----------------|-------|-------|
| EM3469 | WG840469 | SE3469 | 10469 | 22469 |
| EM3465 | WG840465 | SE3465 | 10465 | 22465 |
| EM3468 | WG840468 | SE3468 | 10468 | 22468 |
| EM3459 | n/a | n/a | 10459 | 22459 |
| EM3458 | n/a | n/a | 10458 | 22458 |
| EM3463 | WG840463 | SE3463 | 10463 | 22463 |
| EM3464 | WG840464 | SE3464 | 10464 | 22464 |
| EM3466 | WG840466 | SE3466 | 10466 | 22466 |
| EM3467 | WG840467 | SE3467 | 10467 | 22467 |



3.3" REFRIGERATION MOTOR

EconoMaster® Your Value Solution

Replacement Motor for Walk-In Cooler Refrigeration Units

Our EconoMaster 3.3" PSC motor replaces hundreds of OEM shaded pole evaporator fan motors found in Bohn, Chandler, Larkin, Kramer, Climate Control, Heatcraft and reduces truck stock costs.

These PSC type motors deliver more power and lower amp draw compared to shaded pole motors.

Features

- > Sleeve bearing
- > Low temp lubricant
- > Capacitor included
- > Open ventilation
- > Mounting - extended studs with nuts

Specifications

- > Class "B" insulation
- > 60 HZ
- > Thermal overload protected
- > Single speed

Replaces 12 Motor Ratings:

- > 1/12HP CW or CCW 115V or 230V
- > 1/15 HP CW or CCW 115V or 230V
- > 1/20HP CW or CCW 115V or 230V

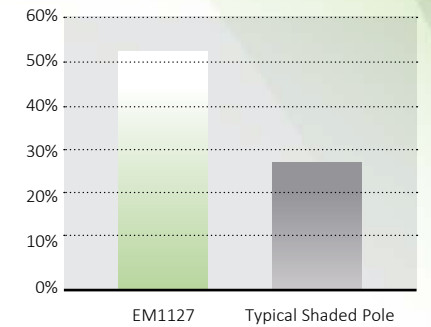
| Stock Number | Replaces HP | Volts | RPM | Rotation | Amps | Cap Included | Shaft Length and Diameter |
|--------------|-------------|---------|------|----------|----------|--------------|---------------------------|
| EM1127 | 1/12-1/20 | 115/230 | 1550 | REV | 1.1/0.60 | 7.5 MFD 370V | 3.00 x 5/16 |

Cross Reference Guide

| Supco | US Motors | OEM | Packard | MARS |
|--------|--|---|---------|-------|
| SM1127 | 9650, 9651, 9652, 9653, 9656, 9662, 9664 | 25308601, 25309101, 2531194, 2531195, 7071061 | 49101 | 01127 |

ENERGY SAVINGS PSC DESIGN

50% More Efficient than Shaded Pole Motors



Less efficient shaded pole motors are often used in original equipment to reduce cost. While they do allow for small savings at time of purchase, durable savings quickly dissolve in electric bills due to today's high power costs.



EconoMaster® Your Value Solution

With the line of EconoMaster motors on your truck you no longer have to worry about having the right motor for the job. EconoMaster motors have been in service for several years and have proven themselves to be highly dependable and reliable. Each EconoMaster motor is manufactured at our modern manufacturing facilities. Using sophisticated technology, these facilities achieve maximum productivity, on-time delivery and strict conformity to specifications. When selecting an EconoMaster motor you have a “field-proven” motor that meets, and often exceeds your installation and performance needs. It’s this special combination of experience, expertise and matchless workmanship that allows us to offer not only a high quality electric motor, but one that meets your value expectations.

Features

- › Class B Insulation for Blower Motors
- › Class B or F Insulation for Condenser Fan Motors
- › Standard and Multi Horsepower Designs
- › Both 60°C and 70°C Ambient Motors
- › Energy Efficient Designs
- › Heavy Duty Ball and Sleeve Bearing
- › Permanent Split Capacitor
- › Rheem Mounting Holes in Shells on Condenser Motors
- › Extended Thru Bolts
- › Meets NEMA Torque Standards

Benefits

- › Fewer motors to stock
- › Saves time and money
- › Superior Packaging Minimizes Shipping Damage
- › Fewer Return Calls
- › 46 Models Replace Hundreds of OEM motors

EconoMaster®

Regal Beloit America, Inc.
1325 Heil Quaker Blvd.
LaVergne, TN 37086
PH: 800-672-6495
FAX: 800-468-2062

A Regal Brand

REGAL

www.regalbeloit.com