

BALDOR • RELIANCE

Customer information packet

EJMM3211T

3HP, 1765RPM, 3PH, 60HZ, 182JM, 3630M, OPSB, F1

Class - None

Division - Not Applicable

Copyright © All product information within this document is subject to ABB Motors and Mechanical Inc. copyright © protection, unless otherwise noted.

7/23/2024 10:55:23 AM

Specifications

Enclosure	OPSB
Frame	182JM
Frame Material	Steel
Frequency	60.00 Hz
Haz Area Class and Group	None
Haz Area Division	Not Applicable
Motor Letter Type	Three Phase
Output @ Frequency	3.000 HP @ 60 HZ
Phase	3
Synchronous Speed @ Frequency	1800 RPM @ 60 HZ
Voltage @ Frequency	460.0 V @ 60 HZ 230.0 V @ 60 HZ
Agency Approvals	CSA CSA EEV UR
Ambient Temperature	40 °C
Auxillary Box	No Auxillary Box
Auxillary Box Lead Termination	None
Base Indicator	Rigid
Bearing Grease Type	Polyrex EM (-20F +300F)
Blower	None
Current @ Voltage	8.400 A @ 230.0 V 8.500 A @ 208.0 V 4.200 A @ 460.0 V
Design Code	B
Drip Cover	No Drip Cover
Duty Rating	CONT
Efficiency @ 100% Load	89.5 %
Electrically Isolated Bearing	Not Electrically Isolated
Feedback Device	NO FEEDBACK
Front Face Code	Standard
Front Shaft Indicator	None

Part detail

Revision	M
Type	AC
Mech. spec.	36G687
Base	
Status	PRD/A
Elec. spec.	36WGS658
Layout	36LYG687
Eff. date	07-12-2024
CD Diagram	CD0005
Poles	04
Leads	9#16
Proprietary	False
Created date	06-01-2011

Heater Indicator	No Heater
High Voltage Full Load Amps	4.2 a
Insulation Class	F
Inverter Code	Inverter Ready
KVA Code	K
Lifting Lugs	No Lifting Lugs
Locked Bearing Indicator	Locked Bearing
Motor Lead Exit	Ko Box
Motor Lead Quantity/Wire Size	9 @ 16 AWG
Motor Lead Termination	Flying Leads
Motor Standards	NEMA
Motor Type	3630M
Mounting Arrangement	F1
Number of Poles	4
Overall Length	16.50 IN
Power Factor	74
Product Family	General Purpose
Pulley End Bearing Type	Ball
Pulley Face Code	C-Face
Pulley Shaft Indicator	Tapped & Key
Rodent Screen	Included
Service Factor	1.15
Shaft Diameter	0.875 IN
Shaft Extension Location	Pulley End
Shaft Ground Indicator	No Shaft Grounding
Shaft Rotation	Reversible
Shaft Slinger Indicator	Shaft Slinger
Speed	1765 rpm
Speed Code	Single Speed
Starting Method	Direct on line
Thermal Device - Bearing	None
Thermal Device - Winding	None
Vibration Sensor Indicator	No Vibration Sensor
Winding Thermal 1	None

Winding Thermal 2

None

Nameplate

NP3553LUA									
CAT.NO.	EJMM3211T								
SPEC.	36G687S658G1								
HP	3								
VOLTS	230/460								
AMPS	8.4/4.2								
RPM	1765								
FRAME	182JM		HZ	60		PH	3		
SF	1.15	CODE	K	DES	B	CLASS	F		
NEMA NOM. EFF	89.5	PF	74						
RATING	40C AMB-CONT								
CC	010A								
ENCL	OPSB	SN							
DE	6207	ODE	6205						
VPWM INVERTER READY									
CT30-60(2:1) VT3-60(20:1)									
USABLE AT	50Hz 3HP 190/380V 9.8/4.9A							SF1.0	

AC Induction Motor Performance Data

Record # 33604

Typical performance - not guaranteed values

Winding: 36WGS658-R001		Type: 3630M		Enclosure: OPSB	
Nameplate Data			460 V, 60 Hz: High Voltage Connection		
Rated Output (HP)		3	Full Load Torque		8.87 LB-FT
Volts		230/460	Start Configuration		direct on line
Full Load Amps		8.4/4.2	Breakdown Torque		37.4 LB-FT
R.P.M.		1765	Pull-up Torque		17.3 LB-FT
Hz	60 Phase	3	Locked-rotor Torque		21.2 LB-FT
NEMA Design Code	B	KVA Code K	Starting Current		32.3 A
Service Factor (S.F.)		1.15	No-load Current		2.43 A
NEMA Nom. Eff.	89.5	Power Factor 74	Line-line Res. @ 25°C		3.8716 Ω
Rating - Duty		40C AMB-CONT	Temp. Rise @ Rated Load		24°C
S.F. Amps			Temp. Rise @ S.F. Load		28°C
			Locked-rotor Power Factor		43
			Rotor inertia		0.279 LB-FT ²

Load Characteristics 460 V, 60 Hz, 3 HP

% of Rated Load	25	50	75	100	125	150	S.F.
Power Factor	33	53	66	73	79	81	77
Efficiency	80.2	87.5	89.5	89.7	89.5	88.7	89.6
Speed	1791.1	1783	1774.5	1765.5	1755.7	1744.8	1760
Line amperes	2.6	2.99	3.54	4.25	4.97	5.83	4.68

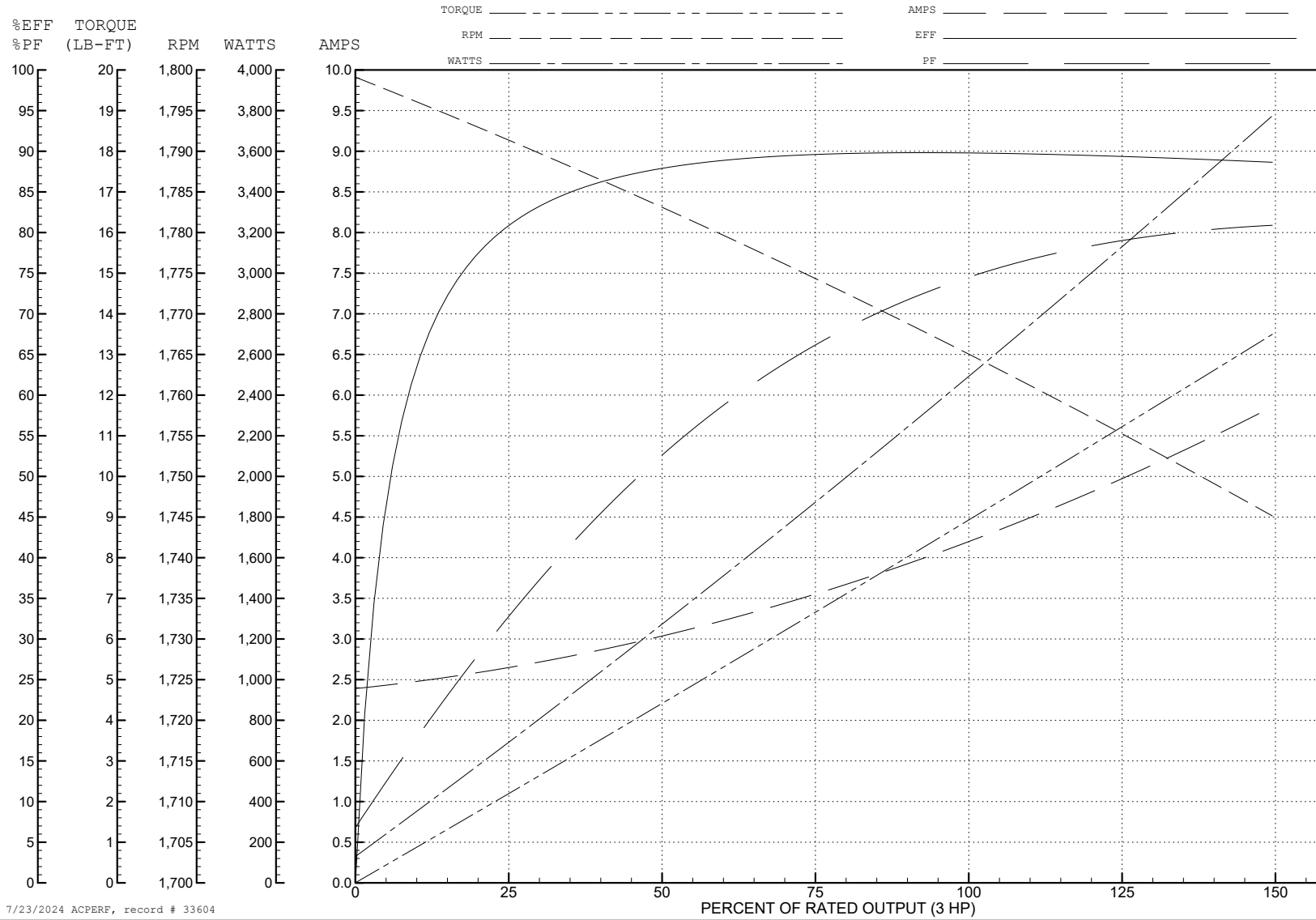
ABB Motors and Mechanical Inc.

WINDING # 36WGS658

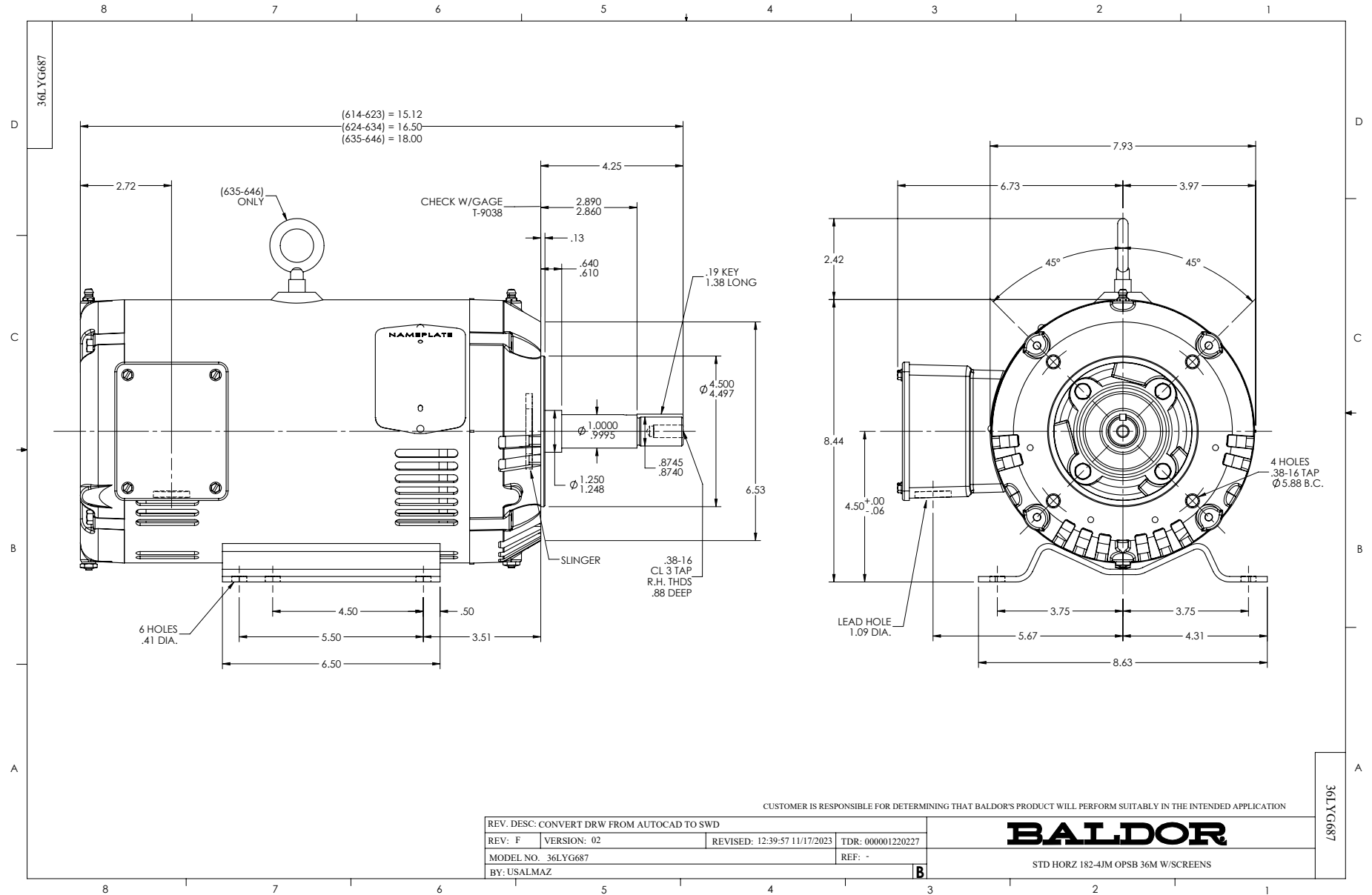
3 HP 3 PH 60 HZ 1765 RPM 460 V 3630M

Typical performance - not guaranteed values.

TORQUES (LB-FT): PO=37.4 PU=17.3 LR=21.2 LRA=32.3



7/23/2024 ACPERF, record # 33604



CD0005



LOW VOLTAGE
(2Y)



LINE

HIGH VOLTAGE
(1Y)



LINE

NOTES:

1. INTERCHANGE ANY TWO LINE LEADS TO REVERSE ROTATION.
2. OPTIONAL THERMOSTATS ARE PROVIDED WHEN SPECIFIED.
3. ACTUAL NUMBER OF INTERNAL PARALLEL CIRCUITS MAY BE A MULTIPLE OF THOSE SHOWN ABOVE.
4. LEAD COLORS ARE OPTIONAL. LEADS MUST ALWAYS BE NUMBERED AS SHOWN.

CD0005

REV. DESC: REVISE TO SHOW OPTIONAL COLORS			
REV. LTR: E	BY: JLP	REVISED: 01/19/99 10:15	TDR: 0171435
S00000		FILE: AAA00005140	MDL: -
		MTL: -	

BALDOR ELECTRIC Co.

3PH, DV, 9 LEADS