

**BALDOR • RELIANCE**

---

# Customer information packet

## EJMM3219T

7.5HP, 3480RPM, 3PH, 60HZ, 184JM, 3632M, OPSB

Class - None

Division - Not Applicable

## Specifications

Enclosure	OPSB
Frame	184JM
Frame Material	Steel
Frequency	60.00 Hz
Haz Area Class and Group	None
Haz Area Division	Not Applicable
Motor Letter Type	Three Phase
Output @ Frequency	7.500 HP @ 60 HZ
Phase	3
Synchronous Speed @ Frequency	3600 RPM @ 60 HZ
Voltage @ Frequency	230.0 V @ 60 HZ 208.0 V @ 60 HZ 460.0 V @ 60 HZ
Agency Approvals	CSA EEV NEMA PREMIUM UR CSA
Ambient Temperature	40 °C
Auxillary Box	No Auxillary Box
Auxillary Box Lead Termination	None
Base Indicator	Rigid
Bearing Grease Type	Polyrex EM (-20F +300F)
Blower	None
Current @ Voltage	8.700 A @ 460.0 V 18.400 A @ 208.0 V 17.400 A @ 230.0 V
Design Code	A
Drip Cover	No Drip Cover
Duty Rating	CONT
Efficiency @ 100% Load	88.5 %
Electrically Isolated Bearing	Not Electrically Isolated
Feedback Device	NO FEEDBACK

## Part detail

Revision	F
Type	AC
Mech. spec.	36G687
Base	
Status	PRD/A
Elec. spec.	36WGQ034
Layout	36LYG687
Eff. date	07-12-2024
CD Diagram	CD0005
Poles	02
Leads	9#16
Proprietary	False
Created date	12-09-2020

Front Shaft Indicator	None
Heater Indicator	No Heater
High Voltage Full Load Amps	8.7 a
Insulation Class	F
Inverter Code	Not Inverter
KVA Code	L
Lifting Lugs	No Lifting Lugs
Locked Bearing Indicator	Locked Bearing
Motor Lead Quantity/Wire Size	9 @ 16 AWG
Motor Lead Termination	Flying Leads
Motor Standards	NEMA
Motor Type	3632M
Mounting Arrangement	F1
Number of Poles	2
Overall Length	16.50 IN
Power Factor	89
Product Family	General Purpose
Pulley End Bearing Type	Ball
Pulley Face Code	C-Face
Pulley Shaft Indicator	Tapped & Key
Rodent Screen	Included
Service Factor	1.15
Shaft Diameter	0.875 IN
Shaft Ground Indicator	No Shaft Grounding
Shaft Rotation	Reversible
Shaft Slinger Indicator	Shaft Slinger
Speed	3480 rpm
Speed Code	Single Speed
Starting Method	Direct on line
Thermal Device - Bearing	None
Thermal Device - Winding	None
Vibration Sensor Indicator	No Vibration Sensor
Winding Thermal 1	None
Winding Thermal 2	None

**Nameplate**

<b>NP1259L</b>									
<b>CAT.NO.</b>	EJMM3219T								
<b>SPEC.</b>	36G687Q034								
<b>HP</b>	7.5								
<b>VOLTS</b>	208-230/460								
<b>AMP</b>	18.4-17.4/8.7								
<b>RPM</b>	3480								
<b>FRAME</b>	184JM	<b>HZ</b>	60	<b>PH</b>	3				
<b>SER.F.</b>	1.15	<b>CODE</b>	L	<b>DES</b>	A	<b>CL</b>	F		
<b>NEMA-NOM-EFF</b>	88.5	<b>PF</b>	89						
<b>RATING</b>	40C AMB-CONT								
<b>CC</b>	010A								
<b>DE</b>	6207	<b>ODE</b>	6205						
<b>ENCL</b>	OPSB	<b>SN</b>							

**AC Induction Motor Performance Data**

Record # 85743

Preliminary Data Sheet

Winding: 36WGQ034-RXXY		Type: 3632M	Enclosure: OPSB
<b>Nameplate Data</b>		<b>460 V, 60 Hz: High Voltage Connection</b>	
Rated Output (HP)	7.5	Full Load Torque	11.3 LB-FT
Volts	208-230/460	Start Configuration	direct on line
Full Load Amps	18.4-17.4/8.7	Breakdown Torque	54.3 LB-FT
R.P.M.	3480	Pull-up Torque	36.1 LB-FT
Hz	60 Phase	Locked-rotor Torque	41.4 LB-FT
NEMA Design Code	A KVA Code	Starting Current	86.3 A
Service Factor (S.F.)	1.15	No-load Current	3.04 A
NEMA Nom. Eff.	88.5 Power Factor	Line-line Res. @ 25°C	1.69 Ω
Rating - Duty	40C AMB-CONT	Temp. Rise @ Rated Load	45°C
S.F. Amps	21.4-20/10	Temp. Rise @ S.F. Load	61°C
		Locked-rotor Power Factor	63.2
		Rotor inertia	0.143 lb-ft <sup>2</sup>

**Load Characteristics 460 V, 60 Hz, 7.5 HP**

% of Rated Load	25	50	75	100	125	150	S.F.
Power Factor	58	80	87	91	93	93	92
Efficiency	81.7	87.9	89	88.6	87.6	86.1	88
Speed	3572	3543	3513	3478	3442	3403	3457
Line amperes	3.68	4.98	6.77	8.66	10.8	13.1	9.9

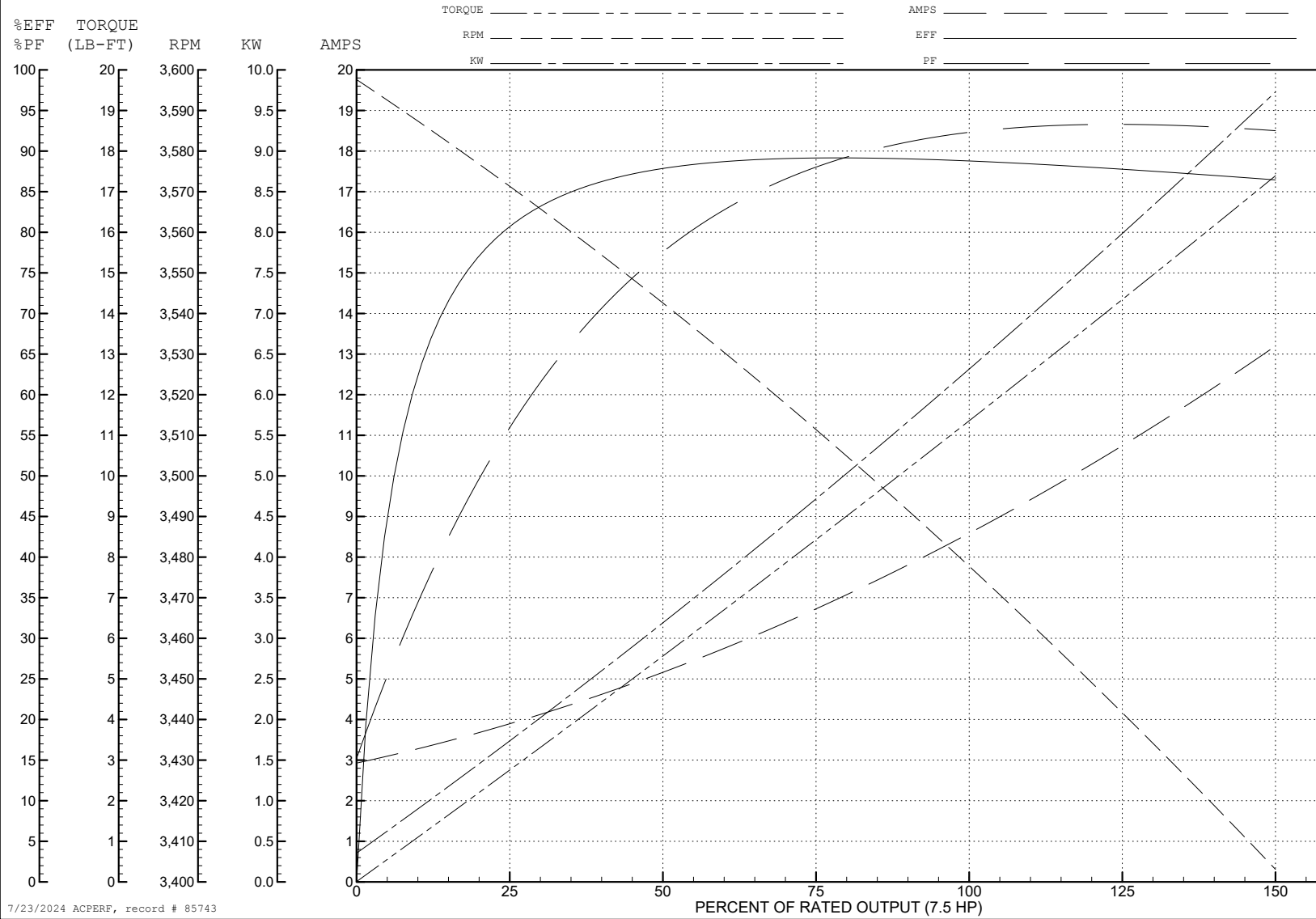
ABB Motors and Mechanical Inc.

WINDING # 36WGQ034

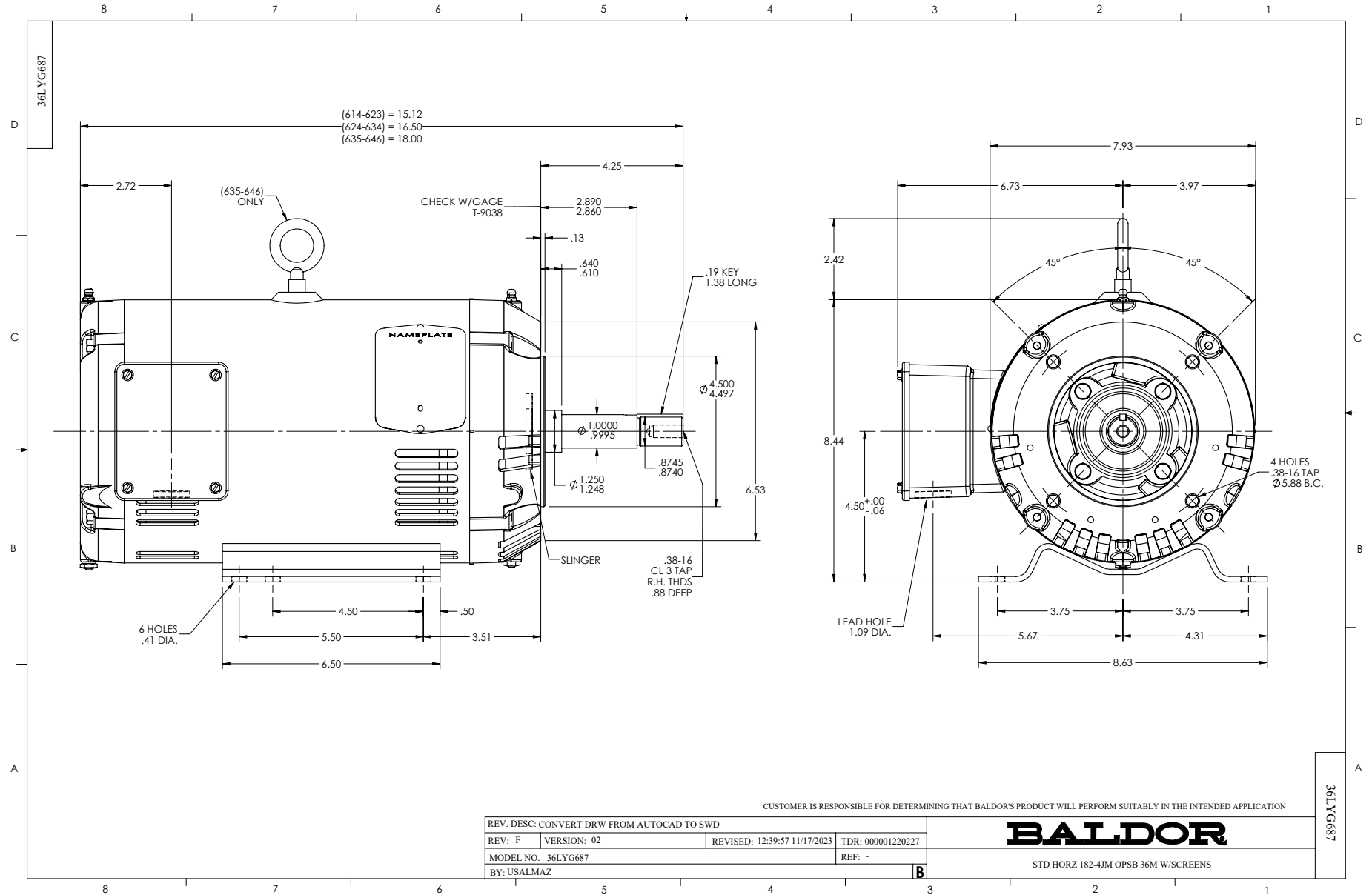
Typical performance - not guaranteed values.

7.5 HP 3 PH 60 HZ 3480 RPM 460 V 3632M

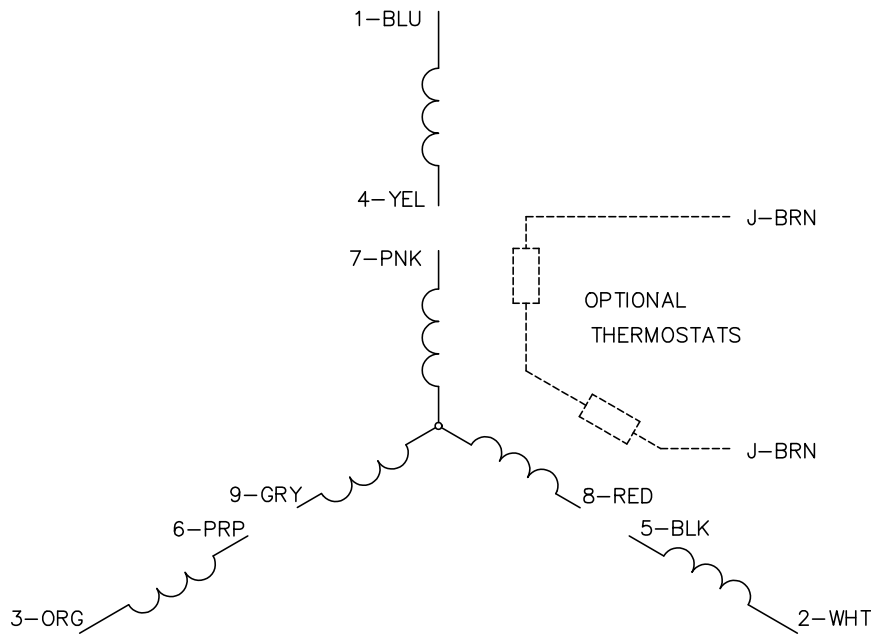
TORQUES (LB-FT): PO=54.3 PU=36.1 LR=41.4 LRA=86.3



7/23/2024 ACPERF, record # 85743



CD0005

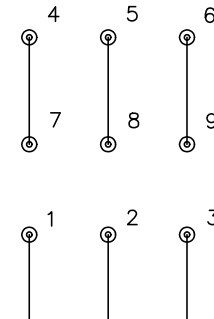


LOW VOLTAGE  
(2Y)



LINE

HIGH VOLTAGE  
(1Y)



LINE

NOTES:

1. INTERCHANGE ANY TWO LINE LEADS TO REVERSE ROTATION.
2. OPTIONAL THERMOSTATS ARE PROVIDED WHEN SPECIFIED.
3. ACTUAL NUMBER OF INTERNAL PARALLEL CIRCUITS MAY BE A MULTIPLE OF THOSE SHOWN ABOVE.
4. LEAD COLORS ARE OPTIONAL. LEADS MUST ALWAYS BE NUMBERED AS SHOWN.

CD0005

REV. DESC: REVISE TO SHOW OPTIONAL COLORS			
REV. LTR: E	BY: JLP	REVISED: 01/19/99 10:15	TDR: 0171435
S00000		FILE: AAA00005140	MDL: -
		MTL: -	

**BALDOR ELECTRIC Co.**

3PH, DV, 9 LEADS