

**BALDOR • RELIANCE**

---

# Customer information packet

## EL11307

.75HP, 1755RPM, 1PH, 60HZ, 56, 3522LC, ODP, F1

Class - None

Division - Not Applicable

## Specifications

Enclosure	ODP
Frame	56
Frame Material	Steel
Frequency	60.00 Hz
Haz Area Class and Group	None
Haz Area Division	Not Applicable
Motor Letter Type	Cap Start, Cap Run
Output @ Frequency	.750 HP @ 60 HZ
Phase	1
Synchronous Speed @ Frequency	1800 RPM @ 60 HZ
Voltage @ Frequency	115.0 V @ 60 HZ 230.0 V @ 60 HZ
Agency Approvals	CURUSEEV
Ambient Temperature	40 °C
Auxillary Box	No Auxillary Box
Auxillary Box Lead Termination	None
Base Indicator	Rigid
Bearing Grease Type	Polyrex EM (-20F +300F)
Blower	None
Current @ Voltage	6.100 A @ 115.0 V 3.350 A @ 208.0 V 3.050 A @ 230.0 V
Design Code	N
Drip Cover	No Drip Cover
Duty Rating	CONT
Efficiency @ 100% Load	82.5 %
Electrically Isolated Bearing	Not Electrically Isolated
Feedback Device	NO FEEDBACK
Front Shaft Indicator	None
Heater Indicator	No Heater
High Voltage Full Load Amps	3.1 a
Insulation Class	F

## Part detail

Revision	B
Type	AC
Mech. spec.	35M497
Base	
Status	PRD/A
Elec. spec.	35WGL999
Layout	35LYM497
Eff. date	05-16-2024
CD Diagram	CD0055
Poles	04
Leads	6#18
Proprietary	False
Created date	08-01-2022

Inverter Code	Not Inverter
KVA Code	L
Lifting Lugs	No Lifting Lugs
Locked Bearing Indicator	No Locked Bearing
Motor Lead Quantity/Wire Size	6 @ 18 AWG
Motor Lead Termination	Flying Leads
Motor Standards	NEMA
Motor Type	3522LC
Mounting Arrangement	F1
Number of Poles	4
Overall Length	12.07 IN
Power Factor	95
Product Family	General Purpose
Pulley End Bearing Type	Ball
Pulley Face Code	Standard
Pulley Shaft Indicator	Standard
Rodent Screen	None
Service Factor	1.25
Shaft Diameter	0.625 IN
Shaft Ground Indicator	No Shaft Grounding
Shaft Rotation	Reversible
Shaft Slinger Indicator	No Slinger
Speed	1755 rpm
Speed Code	Single Speed
Starting Method	Direct on line
Thermal Device - Bearing	None
Thermal Device - Winding	None
Vibration Sensor Indicator	No Vibration Sensor
Winding Thermal 1	None
Winding Thermal 2	None

**Nameplate**

<b>NP3155L</b>									
<b>CAT.NO.</b>	EL11307								
<b>SPEC.</b>	35M497L999								
<b>HP</b>	.75								
<b>VOLTS</b>	115/230								
<b>AMP</b>	6.1/3.05								
<b>RPM</b>	1755								
<b>FRAME</b>	56		<b>HZ</b>	60		<b>PH</b>	1		
<b>SER.F.</b>	1.25	<b>CODE</b>	L	<b>DES</b>	N	<b>CL</b>	F		
<b>F.L. AVG. EFF.</b>	82.5	<b>PF</b>	95						
<b>RATING</b>	40C AMB-CONT								
<b>CC</b>									
<b>DE</b>	6205		<b>ODE</b>	6203					
<b>ENCL</b>	ODP	<b>SN</b>							
	SFA 8.4/4.2								

**AC Induction Motor Performance Data**

Record # 84023

Typical performance - not guaranteed values

Winding: 35WGL999-R001		Type: 3522LC	Enclosure: OPEN		
<b>Nameplate Data</b>			<b>115 V, 60 Hz: Low Voltage Connection</b>		
Rated Output (HP)	.75	Full Load Torque	2.25 LB-FT		
Volts	115/230	Start Configuration	direct on line		
Full Load Amps	6.1/3.1	Breakdown Torque	6.17 LB-FT		
R.P.M.	1750	Pull-up Torque	5.27 LB-FT		
Hz	60 Phase	1	Locked-rotor Torque	9.16 LB-FT	
NEMA Design Code	N	KVA Code	L	Starting Current	59 A
Service Factor (S.F.)	1.25	No-load Current	2.04 A		
NEMA Nom. Eff.	81.1	Power Factor	96	Line-line Res. @ 25°C	1.1149 Ω A Ph 1.137 Ω B Ph
Rating - Duty	40C	AMB-CONT	Temp. Rise @ Rated Load	78°C	
S.F. Amps	7.7/3.8	Temp. Rise @ S.F. Load	103°C		

**Load Characteristics 115 V, 60 Hz, 0.75 HP**

% of Rated Load	25	50	75	100	125	150	S.F.
Power Factor	77	91	94	95	96	96	96
Efficiency	60.5	76.7	81.9	83.3	82.5	80.7	82.5
Speed	1787.5	1776.9	1765.6	1752.7	1735.6	1718.2	1736
Line amperes	2.64	3.52	4.75	6.12	7.74	9.43	7.74

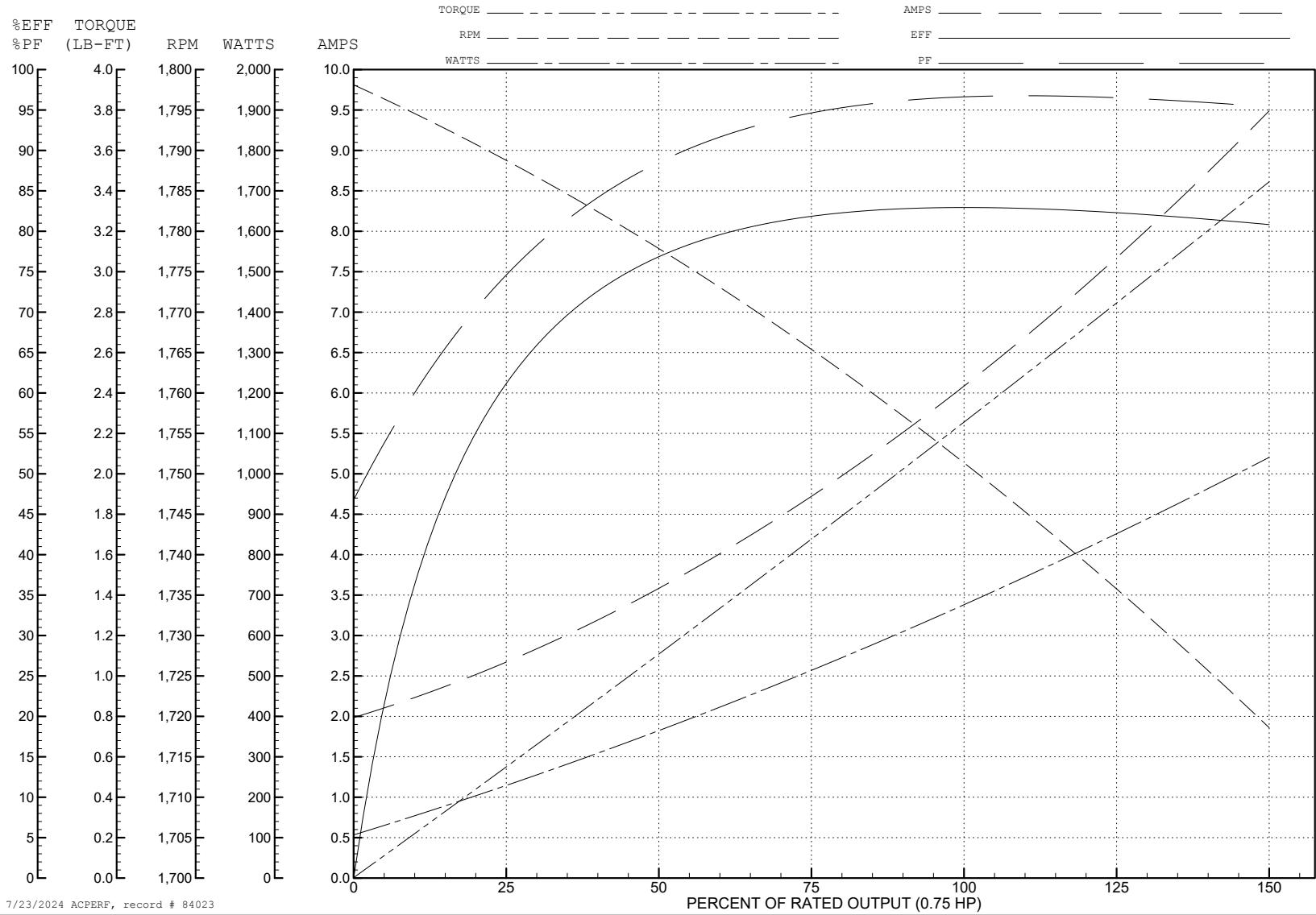
ABB Motors and Mechanical Inc.

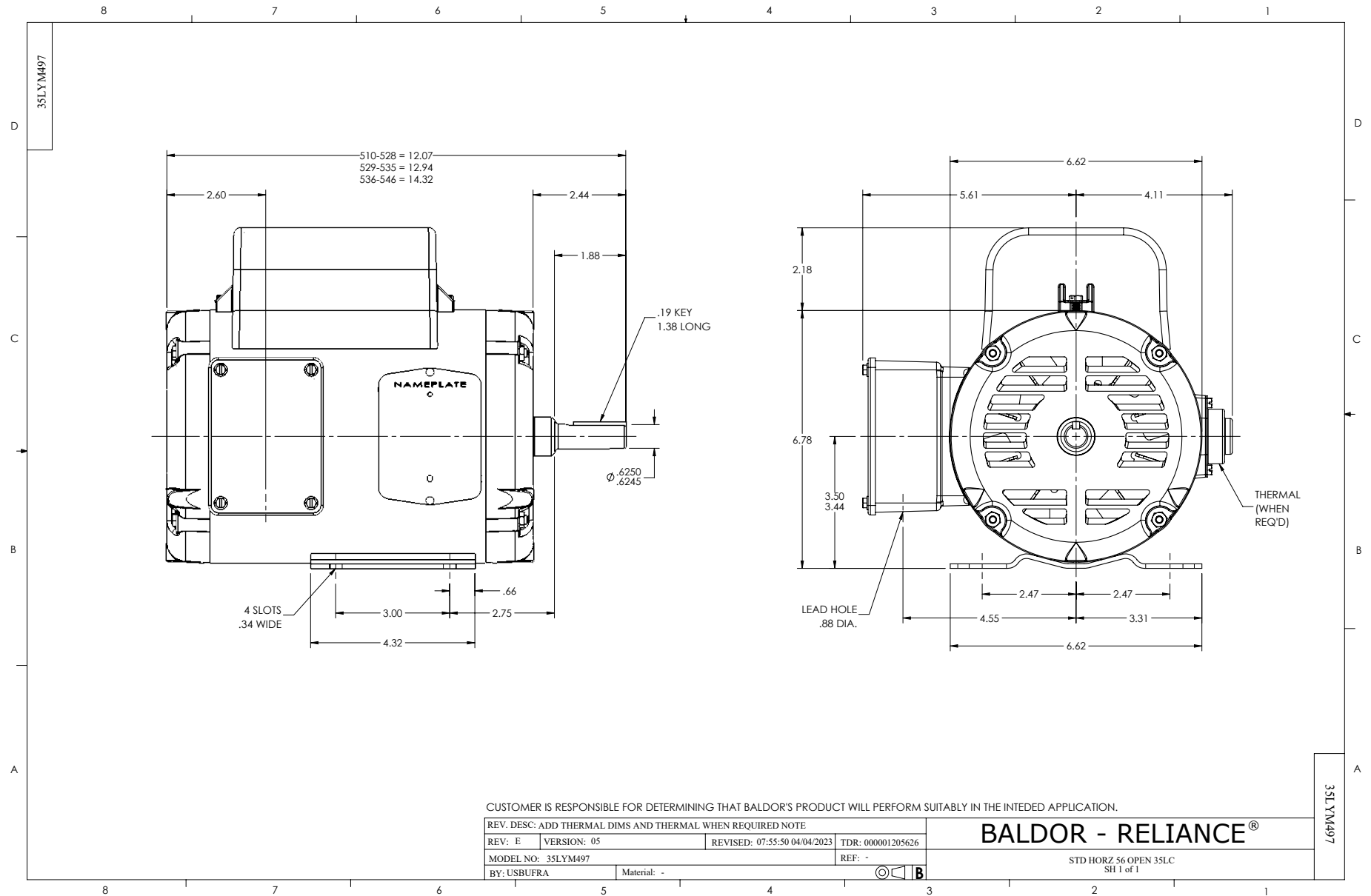
WINDING # 35WGL999

Typical performance - not guaranteed values.

0.75 HP 1 PH 60 HZ 1750 RPM 115 V 3522LC

TORQUES (LB-FT): PO=6.17 PU=5.27 LR=9.16 LRA=59





CD0055

