

BALDOR • RELIANCE

Customer information packet

EM3157TA

2HP, 1725RPM, 3PH, 60HZ, 145T, OPSB

Class - None

Division - Not Applicable

Specifications

Enclosure	OPSB
Frame	145T
Frame Material	Steel
Frequency	60.00 Hz
Haz Area Class and Group	None
Haz Area Division	Not Applicable
Motor Letter Type	Three Phase
Output @ Frequency	2.000 HP @ 60 HZ
Phase	3
Synchronous Speed @ Frequency	1800 RPM @ 60 HZ
Voltage @ Frequency	230.0 V @ 60 HZ 460.0 V @ 60 HZ
Agency Approvals	CSA CSA EEV NEMA PREMIUM NEMA_PREMIUM UR
Ambient Temperature	40 °C
Auxillary Box	No Auxillary Box
Auxillary Box Lead Termination	None
Base Indicator	Rigid
Bearing Grease Type	Polyrex EM (-20F +300F)
Blower	None
Current @ Voltage	5.800 A @ 230.0 V 6.000 A @ 208.0 V 2.900 A @ 460.0 V
Design Code	B
Drip Cover	No Drip Cover
Duty Rating	CONT
Efficiency @ 100% Load	86.5 %
Electrically Isolated Bearing	Not Electrically Isolated
Feedback Device	NO FEEDBACK

Part detail

Revision	Q
Type	AC
Mech. spec.	35Q805
Base	
Status	PRD/A
Elec. spec.	35WGM535
Layout	35LYQ805
Eff. date	04-30-2024
CD Diagram	CD0007
Poles	04
Leads	12#18
Proprietary	False
Created date	07-13-2010

Front Face Code	Standard
Front Shaft Indicator	None
Heater Indicator	No Heater
High Voltage Full Load Amps	2.9 a
Insulation Class	F
Inverter Code	Inverter Ready
KVA Code	L
Lifting Lugs	No Lifting Lugs
Locked Bearing Indicator	No Locked Bearing
Motor Lead Exit	Ko Box
Motor Lead Quantity/Wire Size	12 @ 18 AWG
Motor Lead Termination	Flying Leads
Motor Standards	NEMA
Motor Type	3528M
Mounting Arrangement	F1
Number of Poles	4
Overall Length	12.13 IN
Power Factor	73
Product Family	General Purpose
Pulley End Bearing Type	Ball
Pulley Face Code	Standard
Pulley Shaft Indicator	Standard
Rodent Screen	None
Service Factor	1.15
Shaft Diameter	0.875 IN
Shaft Extension Location	Pulley End
Shaft Ground Indicator	No Shaft Grounding
Shaft Rotation	Reversible
Shaft Slinger Indicator	No Slinger
Speed	1755 rpm
Speed Code	Single Speed
Starting Method	Direct on line
Thermal Device - Bearing	None
Thermal Device - Winding	None

Vibration Sensor Indicator	No Vibration Sensor
Winding Thermal 1	Automatic Thermal Overload
Winding Thermal 1 Location	SB
Winding Thermal 2	None

Nameplate

NP2601L									
CAT.NO.	EM3157TA								
SPEC.	35Q805M535G1								
HP	2								
VOLTS	230/460								
AMP	5.8/2.9								
RPM	1755								
FRAME	145T	HZ	60	PH	3				
SER.F.	1.15	CODE	L	DES	B	CL	F		
NEMA-NOM-EFF	86.5	PF	73						
RATING	40C AMB-CONT								
CC	010A	USABLE AT 208V					N/A		
DE	6205	ODE	6203						
ENCL	OPSB	SN							

AC Induction Motor Performance Data

Record # 53335

Typical performance - not guaranteed values

Winding: 35WGM535-R002		Type: 3528M	Enclosure: OPSB	
Nameplate Data			460 V, 60 Hz: High Voltage Connection	
Rated Output (HP)	2	Full Load Torque	6.01 LB-FT	
Volts	230/460	Start Configuration	direct on line	
Full Load Amps	5.8/2.9	Breakdown Torque	25.7 LB-FT	
R.P.M.	1755	Pull-up Torque	15.7 LB-FT	
Hz	60 Phase	Locked-rotor Torque	17.3 LB-FT	
NEMA Design Code	B KVA Code	Starting Current	24.8 A	
Service Factor (S.F.)	1.15	No-load Current	1.7 A	
NEMA Nom. Eff.	86.5 Power Factor	Line-line Res. @ 25°C	7.7215 Ω	
Rating - Duty	40C AMB-CONT	Temp. Rise @ Rated Load		

Load Characteristics 460 V, 60 Hz, 2 HP

% of Rated Load	25	50	75	100	125	150	S.F.
Power Factor	34	54	67	73	80	83	78
Efficiency	76.3	84.9	87.2	87.4	86.8	85.9	87
Speed	1791	1782.3	1773	1762.8	1753.1	1740.9	1757
Line amperes	1.82	2.07	2.43	2.88	3.36	3.91	3.17

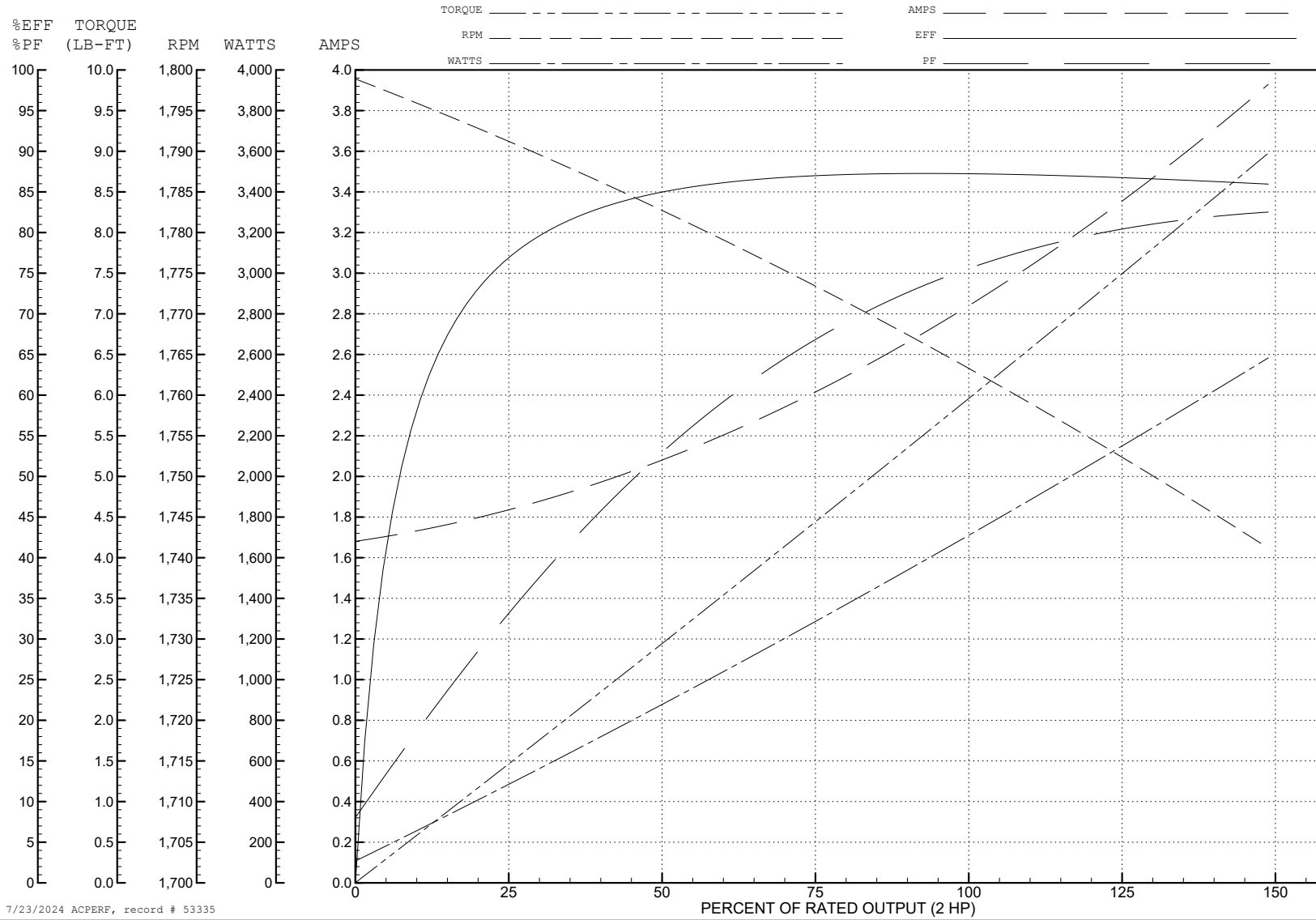
ABB Motors and Mechanical Inc.

WINDING # 35WGM535

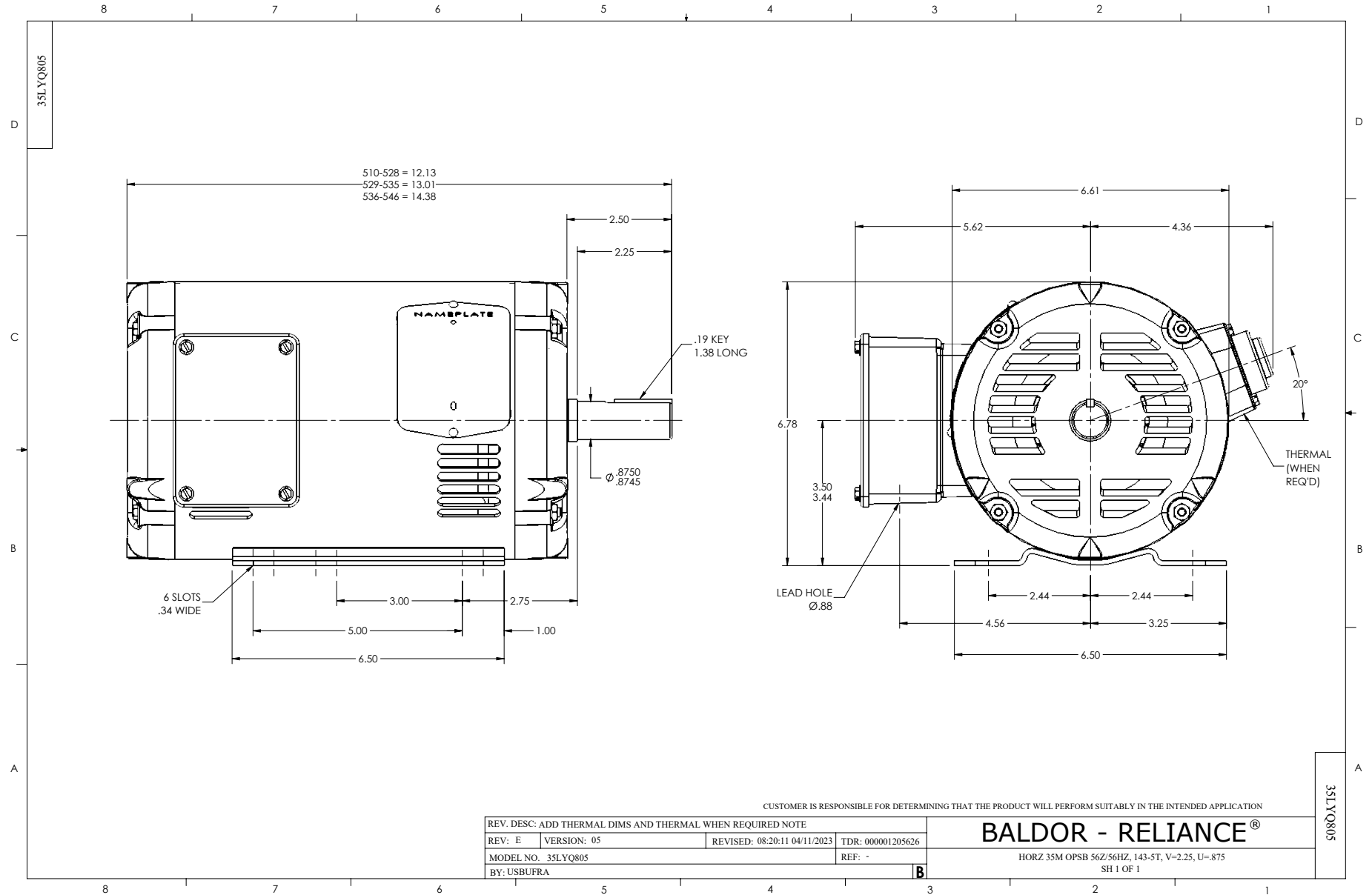
Typical performance - not guaranteed values.

2 HP 3 PH 60 HZ 1755 RPM 460 V 3528M

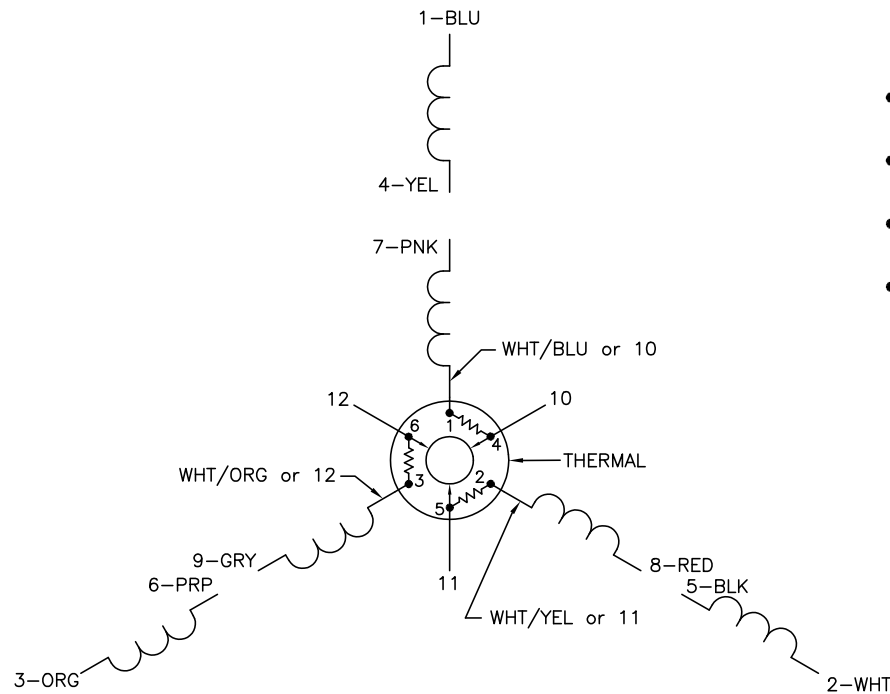
TORQUES (LB-FT): PO=25.7 PU=15.7 LR=17.3 LRA=24.8



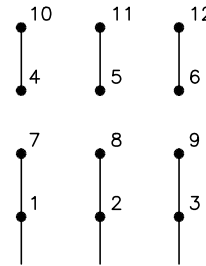
7/23/2024 ACPERF, record # 53335



CD0007

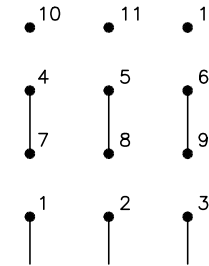


LOW VOLTAGE
(2Y)



LINE

HIGH VOLTAGE
(1Y)



LINE

NOTES:

1. INTERCHANGE ANY TWO LINE LEADS TO REVERSE ROTATION.
2. ACTUAL NUMBER OF INTERNAL PARALLEL CIRCUITS MAY VARY.
3. LEAD COLORS ARE OPTIONAL. LEADS MUST ALWAYS BE NUMBERED AS SHOWN.

CD0007

REV. DESC: ADDED "CK" PLANT CODE			
REV. LTR: E	BY: EAH	REVISED: 05/06/99 17:1	TDR: 0181040
L00000		FILE: AAA00008370	MDL: -
		MTL: -	

BALDOR ELECTRIC Co.

3PH, DV, THERMAL, 12 LEADS