



Customer information packet

EM3613T

5HP, 3470RPM, 3PH, 60HZ, 184T, 3630M, TEFC, F1

Class - None

Division - Not Applicable

Specifications

| | |
|--------------------------------|---|
| Enclosure | TEFC |
| Frame | 184T |
| Frame Material | Steel |
| Frequency | 60.00 Hz |
| Haz Area Class and Group | None |
| Haz Area Division | Not Applicable |
| Motor Letter Type | Three Phase |
| Output @ Frequency | 5.000 HP @ 60 HZ |
| Phase | 3 |
| Synchronous Speed @ Frequency | 3600 RPM @ 60 HZ |
| Voltage @ Frequency | 230.0 V @ 60 HZ 460.0 V @ 60 HZ |
| Agency Approvals | CSA EEV NEMA PREMIUM NEMA_PREMIUM UR |
| Ambient Temperature | 40 °C |
| Auxillary Box | No Auxillary Box |
| Auxillary Box Lead Termination | None |
| Base Indicator | Rigid |
| Bearing Grease Type | Polyrex EM (-20F +300F) |
| Blower | None |
| Current @ Voltage | 5.800 A @ 460.0 V 12.800 A @ 208.0 V 11.600 A @ 230.0 V |
| Design Code | A |
| Drip Cover | No Drip Cover |
| Duty Rating | CONT |
| Efficiency @ 100% Load | 88.5 % |
| Electrically Isolated Bearing | Not Electrically Isolated |
| Feedback Device | NO FEEDBACK |
| Front Shaft Indicator | None |

Part detail

| | |
|--------------|------------|
| Revision | E |
| Type | AC |
| Mech. spec. | 36G271 |
| Base | |
| Status | PRD/A |
| Elec. spec. | 36WGQ043 |
| Layout | 36LYG271 |
| Eff. date | 06-03-2024 |
| CD Diagram | CD0005 |
| Poles | 02 |
| Leads | 9#16 |
| Proprietary | False |
| Created date | 12-15-2020 |

| | |
|-------------------------------|---------------------|
| Heater Indicator | No Heater |
| High Voltage Full Load Amps | 5.8 a |
| Insulation Class | F |
| Inverter Code | Inverter Ready |
| KVA Code | L |
| Lifting Lugs | No Lifting Lugs |
| Locked Bearing Indicator | No Locked Bearing |
| Motor Lead Quantity/Wire Size | 9 @ 16 AWG |
| Motor Lead Termination | Flying Leads |
| Motor Standards | NEMA |
| Motor Type | 3630M |
| Mounting Arrangement | F1 |
| Number of Poles | 2 |
| Overall Length | 16.55 IN |
| Power Factor | 91 |
| Product Family | General Purpose |
| Pulley End Bearing Type | Ball |
| Pulley Face Code | Standard |
| Pulley Shaft Indicator | Standard |
| Rodent Screen | None |
| RoHS Status | ROHS COMPLIANT |
| Service Factor | 1.15 |
| Shaft Diameter | 1.125 IN |
| Shaft Ground Indicator | No Shaft Grounding |
| Shaft Rotation | Reversible |
| Shaft Slinger Indicator | No Slinger |
| Speed | 3470 rpm |
| Speed Code | Single Speed |
| Starting Method | Direct on line |
| Thermal Device - Bearing | None |
| Thermal Device - Winding | None |
| Vibration Sensor Indicator | No Vibration Sensor |
| Winding Thermal 1 | None |
| Winding Thermal 2 | None |

Nameplate**NP3441LUA**

| | | | | | | | |
|----------------------------------|-----------------------------|-------------|-----------|------------|---|--------------|-------|
| CAT.NO. | EM3613T | | | | | | |
| SPEC | 36G271Q043G2 | | | | | | |
| HP | 5 | | | | | | |
| VOLTS | 230/460 | | | | | | |
| AMPS | 11.6/5.8 | | | | | | |
| RPM | 3470 | | | | | | |
| FRAME | 184T | | HZ | 60 | | PH | 3 |
| SF | 1.15 | CODE | L | DES | A | CLASS | F |
| NEMA NOM. EFF | 88.5 | PF | 91 | | | | |
| RATING | 40C AMB-CONT | | | | | | |
| CC | 010A | | | | | | |
| ENCL | TEFC | SER | | | | | |
| DE | 6206 | ODE | 6205 | | | | |
| VPWM INVERTER READY | | | | | | | |
| CT6-60H(10:1)VT3-60H(20:1 | 50HZ 5HP 190/380V 14.2/7.1A | | | | | | SF1.0 |

Accessories

| Part number | Description | Multiplier |
|--------------------|---|-------------------|
| 36-3301 | C FACE KIT | A8 |
| 36EP1304A62SP | FLANGE MTD ENDPLATE 182-4TD -ENCL (LESS | A8 |

AC Induction Motor Performance Data

Record # 85858

Preliminary Data Sheet

| Winding: 36WGQ043-RXXX | | Type: 3630M | Enclosure: TEFC | |
|------------------------|-------------------|---------------------------|--|--|
| Nameplate Data | | | 460 V, 60 Hz: High Voltage Connection | |
| Rated Output (HP) | 5 | Full Load Torque | 7.57 LB-FT | |
| Volts | 230/460 | Start Configuration | direct on line | |
| Full Load Amps | 11.6/5.8 | Breakdown Torque | 35.2 LB-FT | |
| R.P.M. | 3470 | Pull-up Torque | 25.1 LB-FT | |
| Hz | 60 Phase | Locked-rotor Torque | 28.6 LB-FT | |
| NEMA Design Code | A KVA Code | Starting Current | 58.9 A | |
| Service Factor (S.F.) | 1.15 | No-load Current | 1.75 A | |
| NEMA Nom. Eff. | 88.5 Power Factor | Line-line Res. @ 25°C | 2.57 Ω | |
| Rating - Duty | 40C AMB-CONT | Temp. Rise @ Rated Load | 76°C | |
| S.F. Amps | 13.4/6.7 | Temp. Rise @ S.F. Load | 102°C | |
| | | Locked-rotor Power Factor | 65.7 | |
| | | Rotor inertia | 0.134 lb-ft ² | |

Load Characteristics 460 V, 60 Hz, 5 HP

| % of Rated Load | 25 | 50 | 75 | 100 | 125 | 150 | S.F. |
|-----------------|------|------|------|------|------|------|------|
| Power Factor | 62 | 81 | 88 | 92 | 93 | 94 | 93 |
| Efficiency | 85.6 | 89.6 | 89.7 | 88.7 | 87.1 | 85.1 | 87.8 |
| Speed | 3570 | 3540 | 3505 | 3469 | 3430 | 3385 | 3436 |
| Line amperes | 2.26 | 3.25 | 4.48 | 5.81 | 7.28 | 8.92 | 6.68 |

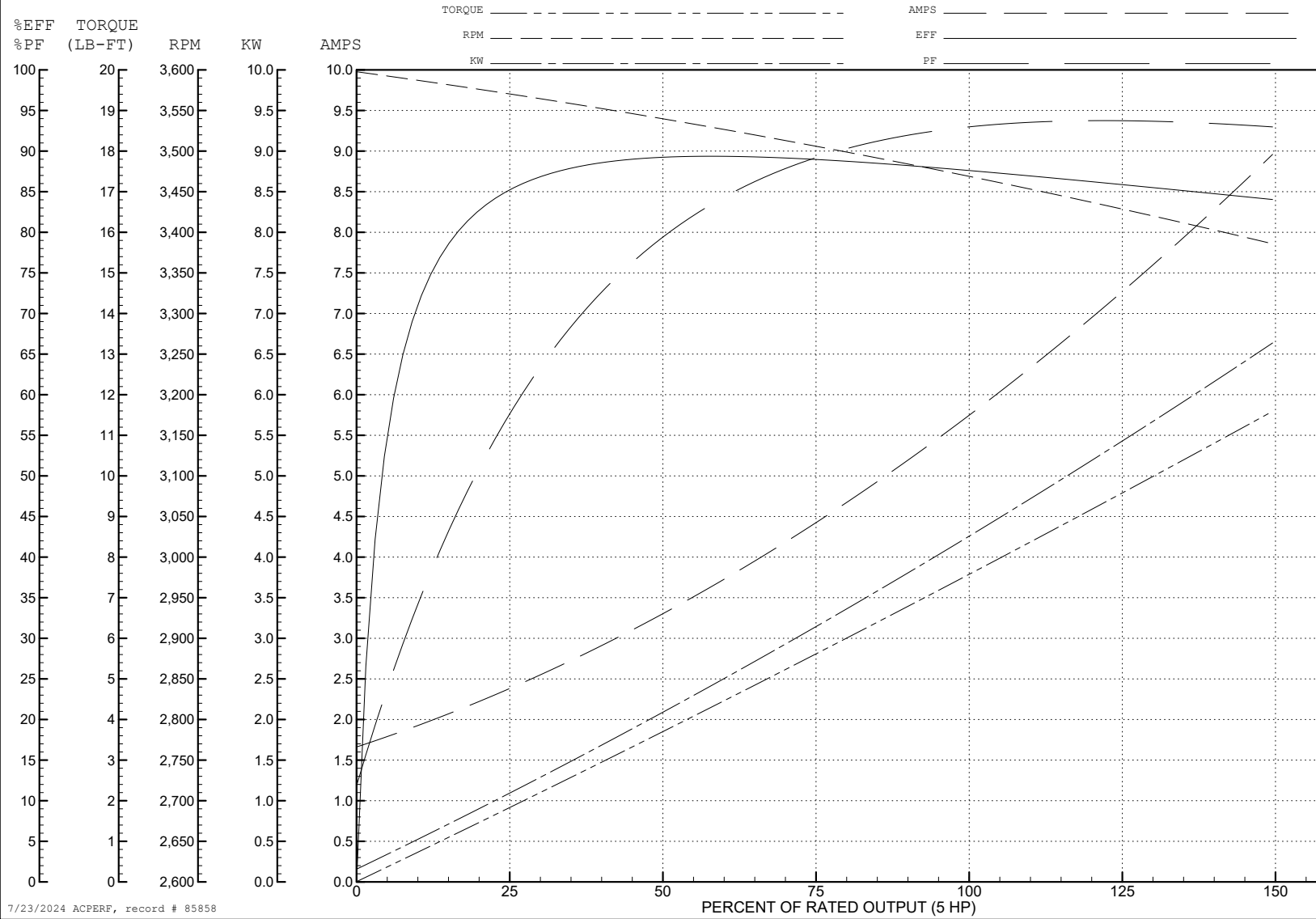
ABB Motors and Mechanical Inc.

WINDING # 36WGQ043

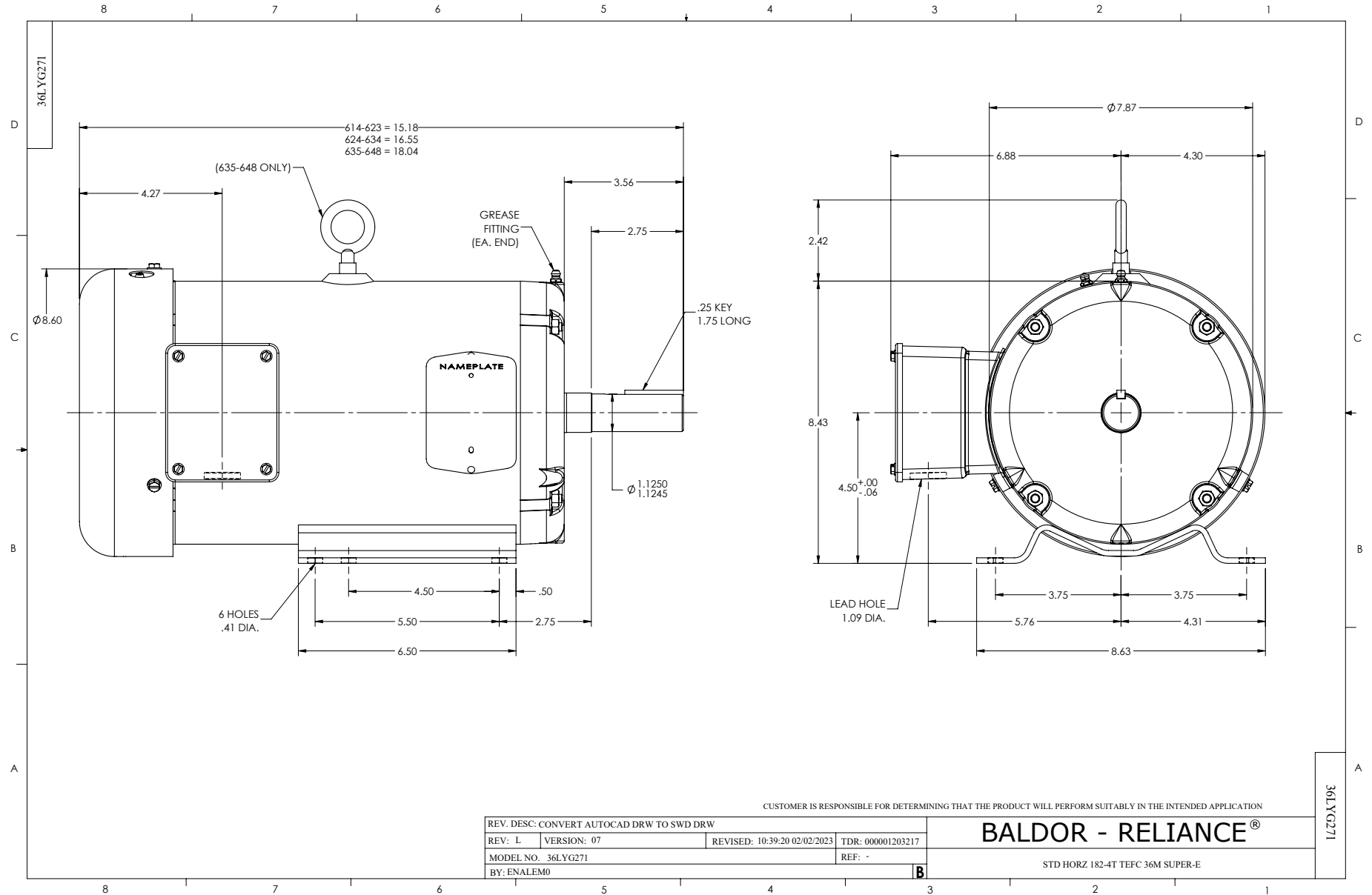
Typical performance - not guaranteed values.

5 HP 3 PH 60 HZ 3470 RPM 460 V 3630M

TORQUES (LB-FT): PO=35.2 PU=25.1 LR=28.6 LRA=58.9



7/23/2024 ACPERF, record # 85858



CD0005



LOW VOLTAGE
(2Y)



LINE

HIGH VOLTAGE
(1Y)



LINE

NOTES:

1. INTERCHANGE ANY TWO LINE LEADS TO REVERSE ROTATION.
2. OPTIONAL THERMOSTATS ARE PROVIDED WHEN SPECIFIED.
3. ACTUAL NUMBER OF INTERNAL PARALLEL CIRCUITS MAY BE A MULTIPLE OF THOSE SHOWN ABOVE.
4. LEAD COLORS ARE OPTIONAL. LEADS MUST ALWAYS BE NUMBERED AS SHOWN.

CD0005

| | | | |
|---|---------|-------------------------|--------------|
| REV. DESC: REVISE TO SHOW OPTIONAL COLORS | | | |
| REV. LTR: E | BY: JLP | REVISED: 01/19/99 10:15 | TDR: 0171435 |
| S00000 | | FILE: AAA00005140 | MDL: - |
| | | MTL: - | |

BALDOR ELECTRIC Co.

3PH, DV, 9 LEADS