

Permanent Split Capacitor Ventilation Direct Drive Blower 5.0" & 5.6" Diameter, Open, Air Over *(continued)*

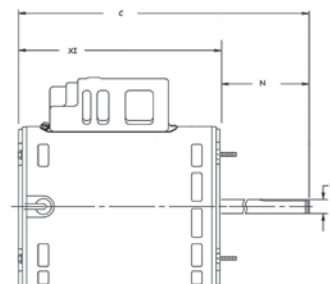


APPLICATIONS:

Designed to meet manufacturer's requirements for direct drive ventilation units.

FEATURES:

- Capacitor Included And Mounted On PSC Models
- Automatic Reset Thermal Overload Protector
- Continuous Duty
- Ball Bearings Unless Noted
- 40°C Ambient Rated
- 1.0 Service Factor



HP	RPM/ Spd.	Voltage	Catalog Number	Amps	NEMA Frame	Motor Type	Shaft N	Shaft U	Rotation Lead End	Length XI	Total C	Ship Wt.	Notes
1/4	1140/1	115/230	1191	3.5/1.8	48Y	PSC	5.1	.500	Rev.	6.8	11.4	15.3	
	1725/1	115/230	1255	2.5/1.3	48Y	PSC	5.0	.500	Rev.	7.3	11.8	15.8	
1/3	1140/1	115/208-230	1900	4.2/2.1	48Y	PSC	4.5	.500	Rev.	7.1	11.9	-	
1/2	1140/1	115/230	1195	5.8/2.8	48Y	PSC	4.5	.500	Rev.	7.9	12.9	19.4	
	1725/1	115/230	1899	5.6/2.8	48Y	PSC	4.5	.500	Rev.	7.9	12.9	17.0	

Permanent Split Capacitor Ventilation Direct Drive Blower 5.6" & 6.3" Diameter, Totally Enclosed, Air Over (TEAO)

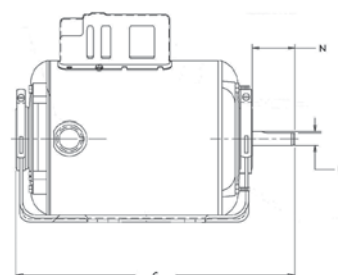


APPLICATIONS:

Design to meet manufacturer's requirements for direct drive ventilation units requiring a totally enclosed motor.

FEATURES:

- Continuous Duty
- 1/2" Dia. x 2 1/2" Shaft
- Reversible Rotation
- Studs For Mounting Fan Guard
- Terminal Board With Side Conduit Plug
- Automatic Thermal Protection
- Includes Capacitor Mounted With Cover



HP	RPM/ Spd.	Voltage	Catalog Number	NEMA Frame	Amps	Eff.	SF	Bearings	Insul. Class	Total C	Ship Wt.	Notes	OEM
1/4	1020	115	4153	48Y	4.5	Std	1.0	SAB	B	10.0	8.5		MQ
	1725	115	6326	56Z	5.0	Std	1.0	Ball	A	9.8	18	94	
1/2	1700	115/230	1850	48Z	5.0/2.5	High	1.0	Ball	B	10.9	25		

MQ = McQuay

Note 94: Split Phase

† All marks shown within this document are properties of their respective owners.

