

**For HVAC Applications**

Job Name \_\_\_\_\_

Contractor \_\_\_\_\_

Job Location \_\_\_\_\_

Approval \_\_\_\_\_

Engineer \_\_\_\_\_

Contractor's P.O. No. \_\_\_\_\_

Approval \_\_\_\_\_

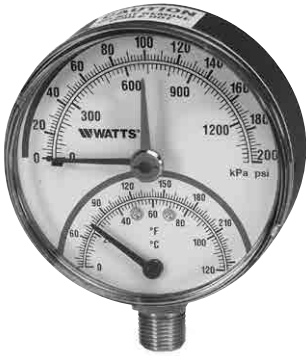
Representative \_\_\_\_\_

**LEAD FREE\***

**Series LFDPTG-1  
Bottom Entry Combination  
Pressure/Temperature Gauges**

**Dial Sizes: 3" (80mm)**

Series LFDPTG-1 Combination Pressure and Temperature Gauges are used in commercial, residential, and institutional HVAC applications. These gauges are bottom-entry type models with black enamel steel cases, Kostil Polymer windows, 1/2" NPT connections, copper alloy Bourdon tube pressure elements, and bimetal spiral springs. The LFDPTG-1 features Lead Free\* construction to comply with Lead Free\* installation requirements. Accuracy is ASME, Type B. The Series LFDPTG-1 gauges are available in various pressure rating scales. The dual pressure scale features PSI and kPa measurements. The dual temperature scale features °F and °C measurements.



LFDPTG-1

**Features**

- Black enamel steel case
- Kostil polymer window
- Copper alloy Bourdon pressure element
- Bimetal spiral spring temperature element
- Tin alloy welding
- 1/2" Lead Free\* Brass NPT
- Pressure gauge ASME Type "B" accuracy

**Standards**

- ASME B40.100
- EN ISO 9001:2008
- EN ISO 14001:2004

**Temperature**

**Working Temperature:** 60°F to 320°F (15.5°C to 160°C)

**Materials**

- Case:** Black enamel steel
- Window:** Kostil polymer
- Pressure Element:** Copper alloy Bourdon tube
- Temperature Element:** Bimetal spiral spring
- Welding:** Tin alloy
- Connector:** Lead Free\* Brass

\*The wetted surface of this product contacted by consumable water contains less than 0.25% of lead by weight.

**NOTICE**

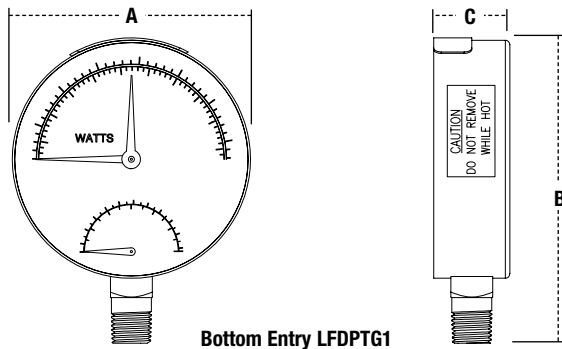
The information contained herein is not intended to replace the full product installation and safety information available or the experience of a trained product installer. You are required to thoroughly read all installation instructions and product safety information before beginning the installation of this product.

\*The wetted surface of this product contacted by consumable water contains less than 0.25% of lead by weight.

Watts product specifications in U.S. customary units and metric are approximate and are provided for reference only. For precise measurements, please contact Watts Technical Service. Watts reserves the right to change or modify product design, construction, specifications, or materials without prior notice and without incurring any obligation to make such changes and modifications on Watts products previously or subsequently sold.



## Dimensions – Weights



MODEL	SCALE		TEMP. RANGE		INCLUDES VR RETAINING VALVE	SIZE	DIMENSIONS						WEIGHTS	
			°F	°C			A		B		C		lbs.	kgs.
						in.	in.	mm	in.	mm	in.	mm		
LFDPTG1-3	0 – 50psi	345 kPa	32 – 248	0 – 120	Y	½	3	76	4	101	1	25	.5	13
LFDPTG1-3	0 – 75psi	517 kPa	32 – 248	0 – 120	Y	½	3	76	4	101	1	25	.5	13
LFDPTG1-3	0 – 200psi	1379 kPa	32 – 248	0 – 120	Y	½	3	76	4	101	1	25	.5	13



A Watts Water Technologies Company

**USA:** Tel: (978) 689-6066 • Fax: (978) 975-8350 • Watts.com

**Canada:** Tel: (905) 332-4090 • Fax: (905) 332-7068 • Watts.ca

**Latin America:** Tel: (52) 81-1001-8600 • Fax: (52) 81-8000-7091 • Watts.com