

Safgard™

EZ Plug Wire Harnesses

MODEL 45-348

MODEL 45-349

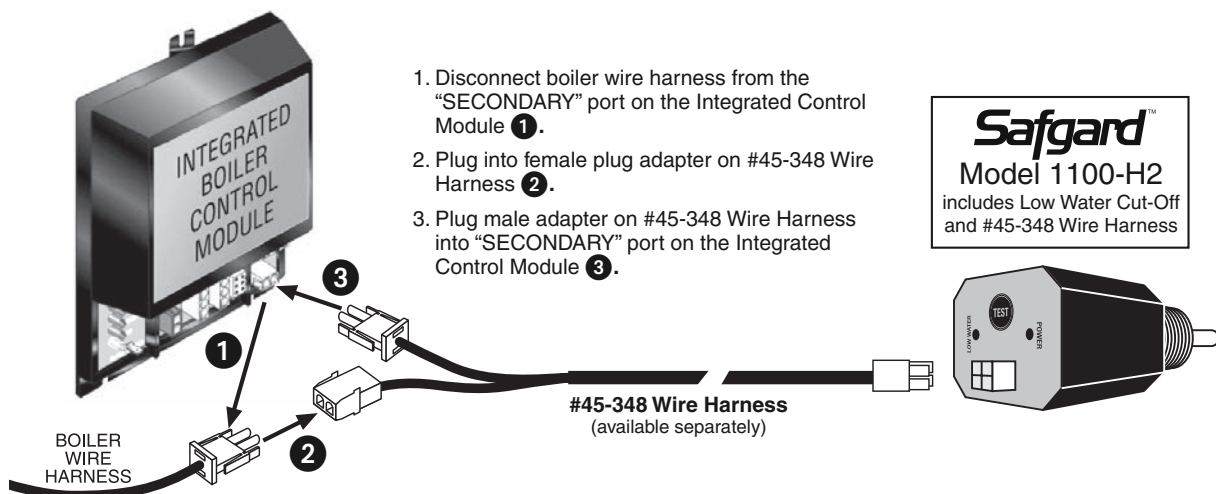
MODEL 45-350

MODEL 45-353

Wire harnesses on this sheet are available separately or can be ordered with the Safgard Model 1100 low water cut-off. See each listing below.

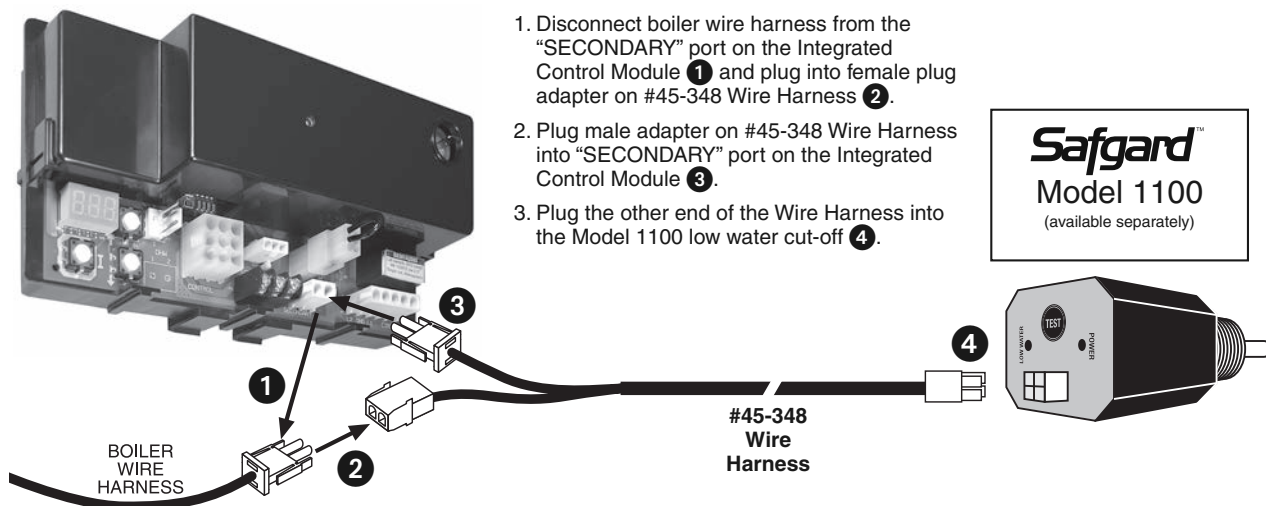
#45-348 Wire Harness

For use with Safgard Model 1100 Low Water Cut-Off on boilers equipped with United Technologies Integrated Boiler Control Module



#45-348 Wire Harness

For boilers equipped with Honeywell Integrated Boiler Control Module

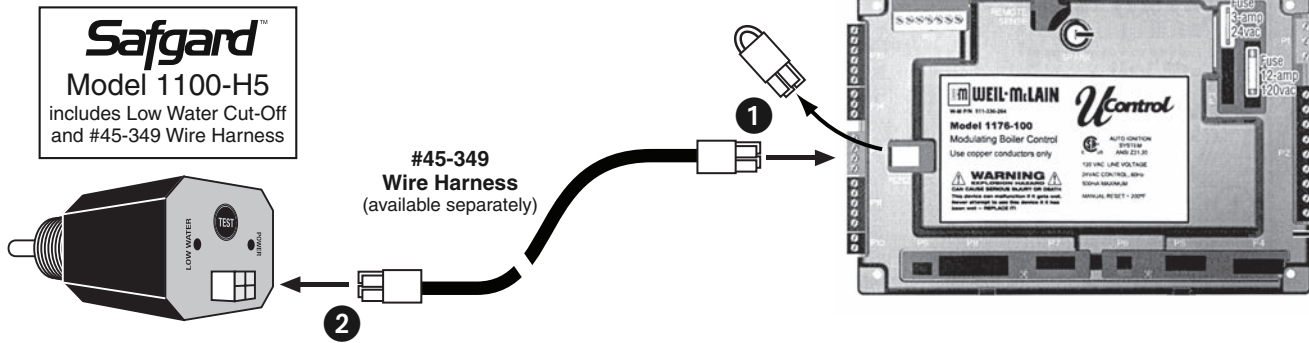


**HYDROLEVEL
COMPANY**

126 Bailey Road, North Haven, CT 06473 • Phone (203) 776-0473 • FAX (203) 764-1711 • www.hydrolevel.com

#45-349 Wire Harness

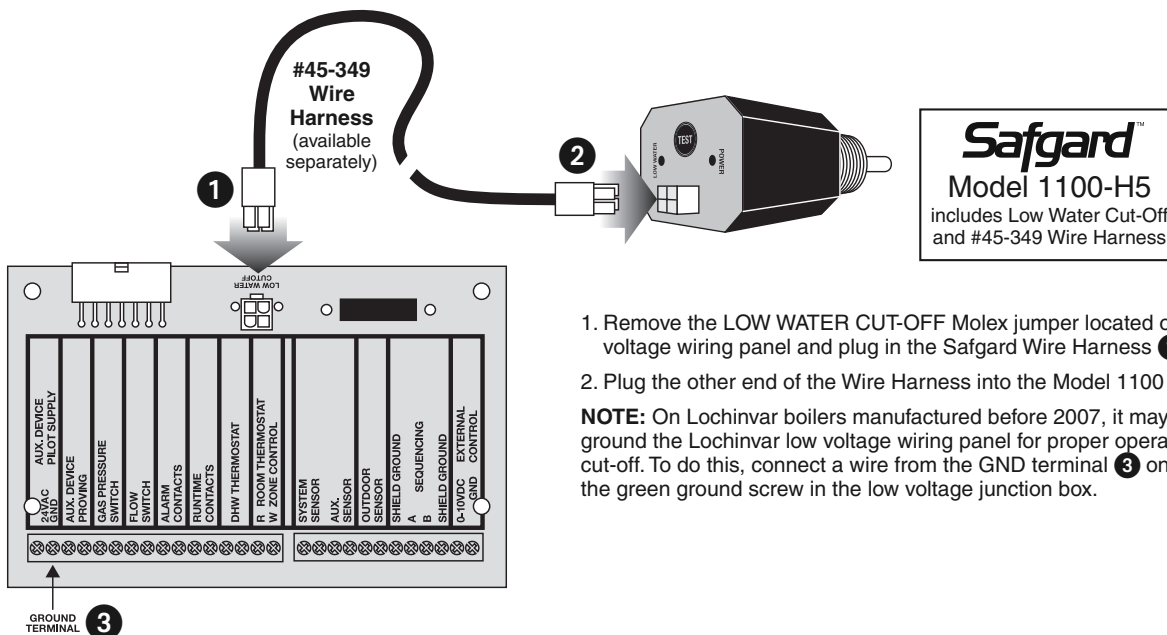
For use with Safgard Model 1100 Low Water Cut-Off on boilers equipped with Weil McLain "U Control"



1. Remove the factory installed Molex jumper from plug P12 on the "U Control" panel and plug in the Safgard Wire Harness ①.
2. Plug the other end of the Wire Harness into the Model 1100 low water cut-off ②.

#45-349 Wire Harness

For use with Safgard Model 1100 Low Water Cut-Off on Lochinvar Knight and Solution Boilers



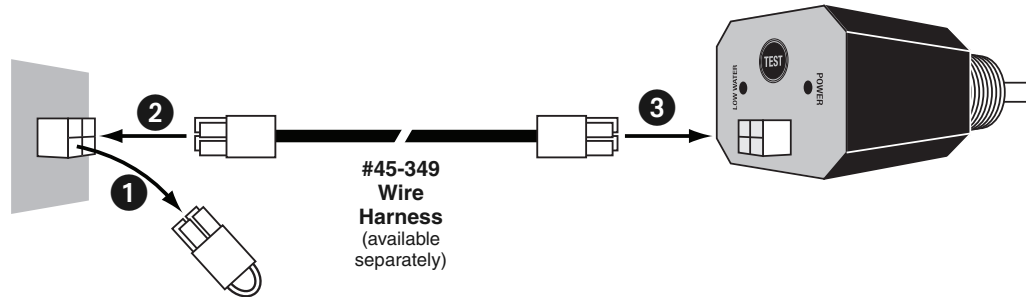
1. Remove the LOW WATER CUT-OFF Molex jumper located on the Lochinvar low voltage wiring panel and plug in the Safgard Wire Harness ①.
2. Plug the other end of the Wire Harness into the Model 1100 low water cut-off ②.

NOTE: On Lochinvar boilers manufactured before 2007, it may be necessary to ground the Lochinvar low voltage wiring panel for proper operation of the low water cut-off. To do this, connect a wire from the GND terminal ③ on the wiring panel to the green ground screw in the low voltage junction box.

#45-349 Wire Harness

For use with Safgard Model 1100 Low Water Cut-Off

Safgard™
Model 1100-H5
includes Low Water Cut-Off
and #45-349 Wire Harness

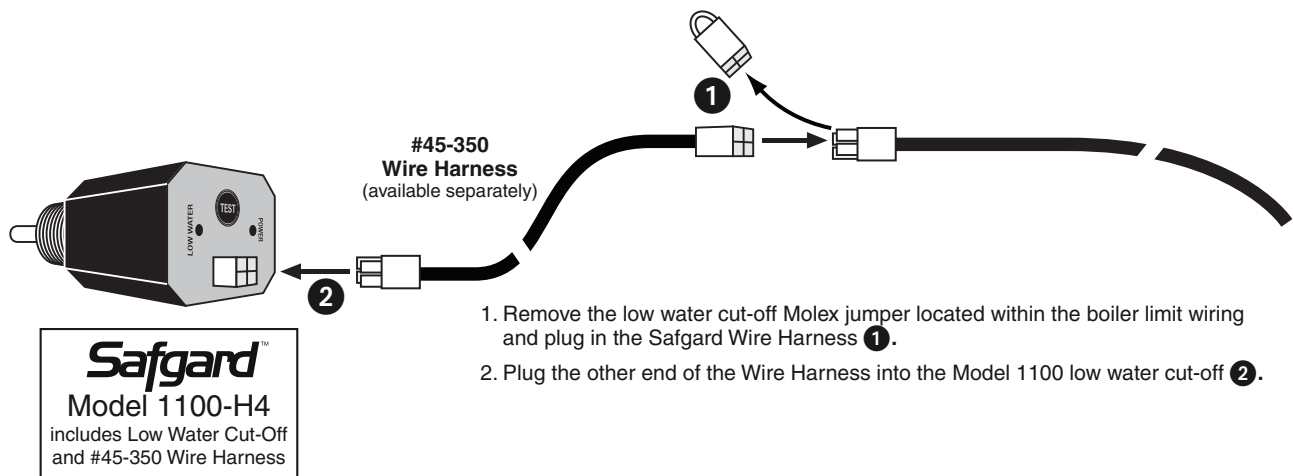


Install the Safgard Model 1100 low water cut-off in the boiler or boiler piping as described in the installation instructions.

1. Remove the jumper installed in the boiler's low water cut-off plug receptacle **1** and plug in the 42" Safgard Wire Harness **2**.
2. Plug the other end of the Wire Harness into the Model 1100 low water cut-off **3**.

#45-350 Wire Harness

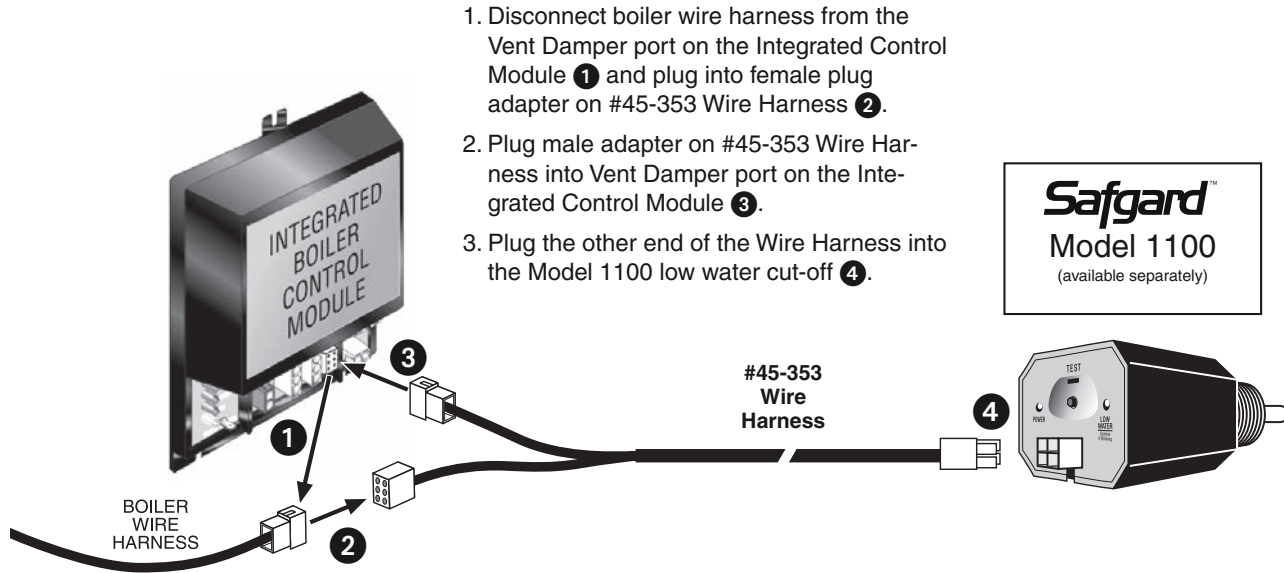
For use with Safgard Model 1100 Low Water Cut-Off on boilers equipped with LWCO Molex – Burnham Model SCG, PVG and Alpine (refer to Burnham installation instructions for exact location of jumper)



1. Remove the low water cut-off Molex jumper located within the boiler limit wiring and plug in the Safgard Wire Harness **1**.
2. Plug the other end of the Wire Harness into the Model 1100 low water cut-off **2**.

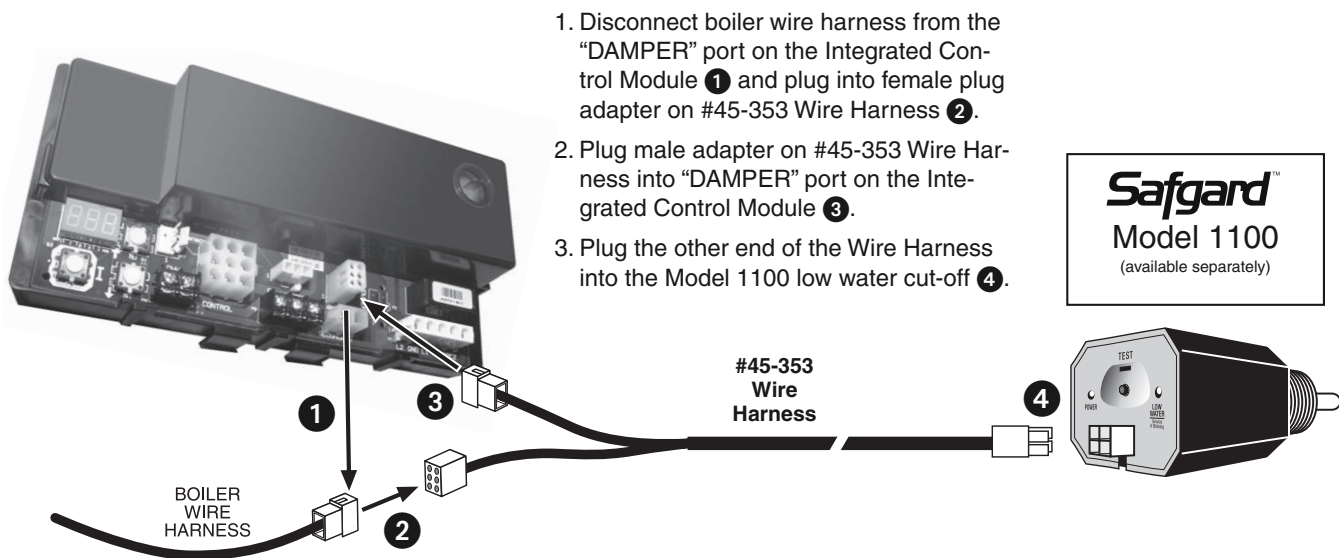
#45-353 Wire Harness

For boilers equipped with United Technologies Integrated Boiler Control Module



#45-353 Wire Harness

For boilers equipped with Honeywell Integrated Boiler Control Module



LIMITED MANUFACTURER'S WARRANTY

We warrant products manufactured by Hydrolevel Company to be free from defects in material and workmanship for a period of two years from the date of manufacture or one year from the date of installation, whichever occurs first. In the event of any claim under this warranty or otherwise with respect to our products which is made within such period, we will, at our option, repair or replace such products or refund the purchase price paid to us by you for such products. In no event shall Hydrolevel Company be liable for any other loss or damage, whether direct, indirect, incidental or consequential. This warranty is your EXCLUSIVE remedy and shall be IN PLACE OF any other warranty or guarantee, express or implied, including, without limitation, any warranty of MERCHANTABILITY or fitness for a particular purpose. This warranty may not be assigned or transferred and any unauthorized transfer or assignment thereof shall be void and of no force or effect.