



| FASCO MODEL | TYPE | HP | VOLTS | RPM | SPD. | AMPS | ENCLOSURE | ROT. | BRNG. | SHAFT DIM. | "A" DIM. | FIG. | NOTES |
|-------------|------|----------|---------|------|------|----------|---------------|------|-------|--------------|----------|------|--------------------|
| D429 | SP | 9 Watts | 115 | 1550 | 1 | 0.6 | Totally Encl. | CCW | SLV | HUB | 2 1/8 | A | 169, 170, 171, 172 |
| D431 | SP | 9 Watts | 230 | 1550 | 1 | 0.3 | Totally Encl. | CCW | SLV | HUB | 2 1/8 | B | 169, 170, 171, 172 |
| D437 | SP | 16 Watts | 115 | 1550 | 1 | 1.1 | Totally Encl. | CCW | SLV | HUB | 2 7/8 | A | 169, 170, 171, 172 |
| D477 | SP | 1/35 | 208-230 | 1550 | 1 | 0.75 | Open Vent. | CCW | SLV | 5/16 X 1 5/8 | 4 1/4 | C | 173, 174 |
| D471 | SP | 1/20 | 208-230 | 1550 | 1 | 1.1 | Open Vent. | CCW | SLV | 5/16 X 2 1/2 | 4 1/4 | C | 173, 174 |
| D417 | SP | 1/20 | 208-230 | 1550 | 1 | 1.1 | Open Vent. | CCW | BALL | 5/16 X 2 1/2 | 4 1/4 | D | 173, 174 |
| D470 | SP | 1/20 | 208-230 | 1550 | 1 | 0.94 | Open Vent. | CW | SLV | 5/16 X 2 5/8 | 4 1/4 | C | 173, 174 |
| D472 | SP | 1/20 | 115 | 1550 | 1 | 1.9 | Open Vent. | CW | SLV | 5/16 X 2 5/8 | 4 1/4 | C | 173, 174 |
| D473 | SP | 1/20 | 115 | 1550 | 1 | 2 | Open Vent. | CCW | SLV | 5/16 X 2 5/8 | 4 1/4 | C | 173, 174 |
| D1129 | PSC | 1/20 | 115/230 | 1550 | 1 | 0.7/1.35 | Totally Encl. | CW | BALL | 5/16 x 1 5/8 | 3 1/8 | E | 113, 23 |
| D475 | SP | 1/15 | 460 | 1550 | 1 | 0.5 | Open Vent. | CCW | SLV | 5/16 X 2 1/2 | 4 1/2 | F | 79, 130, 173, 174 |
| D469 | SP | 1/12 | 208-230 | 1550 | 1 | 1.3 | Open Vent. | CCW | SLV | 5/16 X 2 1/8 | 4 1/3 | G | 173, 174 |

NOTES: 79: See Tecumseh OEM section for cross references 113: PSC version of D1189 (OEM Replacement for Krack Refrigeration. 130: Do not have extended hubs or rubber rings for base mount 169: Mounting bracket designed to match the original motor (four 8-36 drilled and tapped holes) 170: Mounting hardware included 171: Has 22" leads with 1/16" thick insulation 172: Three studs opposite shaft end are 8-32 on a standard 2.84" bolt circle, 120° apart 173: 3.9" diameter 174: Includes 1/2" studs for mounting



FIG. A D429, D437



FIG. B D431



FIG. C D477, D471, D470, D472, D473



FIG. D D417



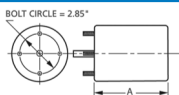
FIG. E D1129



FIG. F D475



FIG. G D469



Thermally protected • UL recognized • CSA or ULc certified

NOTE: Rotation is determined by looking at shaft end. Shaft length is measured from motor face.

NEW ITEM! See page 113 for a complete listing of all our new products.

3.3" Diameter

Evaporator Coil and Refrigeration Fan Motors



| FASCO MODEL | TYPE | HP | VOLTS | RPM | SPD. | AMPS | ENCLOSURE | ROT. | BRNG. | SHAFT DIM. | "A" DIM. | FIG. | NOTES |
|-----------------------|------|--------------------|---------|------|------|-----------|---------------|------|-------|--------------|----------|------|---------|
| BOHN | | | | | | | | | | | | | |
| D1124 | SP | 1/20 | 115 | 1550 | 1 | 2.1 | Open Vent. | CW | SLV | 5/16 X 3 | 3 | D | 75 |
| D1126 | SP | 1/15 | 208-230 | 1550 | 1 | 1.1 | Open Vent. | CW | SLV | 5/16 X 3 | 3 1/2 | D | 75 |
| D1125 | PSC | 1/12 | 208-230 | 1550 | 1 | 0.5 | Open Vent. | CCW | SLV | 5/16 X 2 5/8 | 3 3/4 | E | 29 |
| KEEPRITE | | | | | | | | | | | | | |
| D1120 | SP | 1/20 | 115 | 1550 | 1 | 2.1 | Open Vent. | CW | SLV | 5/16 X 2 1/2 | 3 1/2 | C | |
| D1121 | SP | 1/20 | 208-230 | 1550 | 1 | 1 | Open Vent. | CW | SLV | 5/16 X 2 1/2 | 3 1/2 | C | |
| D1243 | PSC | 1/20 | 115 | 1550 | 1 | 0.8 | Open Vent. | CCW | SLV | 5/16 X 2 3/4 | 4 1/8 | I | 29 |
| D1245 | PSC | 1/20 | 208-230 | 1550 | 1 | 0.3 | Open Vent. | CCW | SLV | 5/16 X 2 3/4 | 4 | I | 29 |
| KRAMER/TRENTON | | | | | | | | | | | | | |
| D1152 | SP | 1/20 | 115 | 1500 | 1 | 1.7 | Open Vent. | CW | SLV | 5/16 X 2 3/8 | 2 7/8 | A | |
| D1154 | SP | 1/20 | 230 | 1550 | 1 | 1 | Open Vent. | CW | SLV | 5/16 X 2 3/8 | 3 1/8 | A | |
| LARKIN COIL | | | | | | | | | | | | | |
| D1101 | SP | 1/20 | 115 | 1500 | 1 | 1.9 | Open Vent. | CCW | SLV | 5/16 X 2 1/4 | 2 3/4 | A | 75 |
| D1103 | SP | 1/20 | 208-230 | 1500 | 1 | 1.15 | Open Vent. | CCW | SLV | 5/16 X 2 1/4 | 3 | A | 75, 201 |
| MCQUAY | | | | | | | | | | | | | |
| D1144 | PSC | 1/25 - 1/35 - 1/65 | 115 | 1200 | 3 | 1.1-.9-.6 | Open Vent. | CW | SLV | 3/8 X 5 3/8 | 4 3/4 | G | 1 |
| D1142 | SP | 1/15 | 115/230 | 1500 | 1 | 1.7-.9 | Open Vent. | CW | SLV | 5/16 X 2 1/2 | 3 1/2 | F | 175 |
| SINGER | | | | | | | | | | | | | |
| ▶ D1164 | SP | 1/25 | 115/230 | 1550 | 1 | 1.3-.65 | Totally Encl. | CW | SLV | 5/16 X 2 1/2 | 3 1/8 | H | |
| WITT | | | | | | | | | | | | | |
| D1102 | PSC | 1/20 | 115/230 | 1550 | 1 | .75-.4 | Open Vent. | CW | SLV | 5/16 X 2-5/8 | 3 1/2 | B | |

NOTES: 1: 4M 370V capacitor 29: 4M 370V capacitor included 75: Shell Turbo 68, low temp. oil (-40°F) 175: Bolt circle = 3.15"



FIG. A D1152, D1154, D1101, D1103



FIG. B D1102



FIG. C D1120, D1121



FIG. D D1124, D1126



FIG. E D1125



FIG. F D1142



FIG. G D1144



FIG. H D1164



FIG. I D1243, D1245



| FASCO MODEL | TYPE | HP | VOLTS | RPM | SPD. | AMPS | ENCLOSURE | ROT. | BRNG. | SHAFT DIM. | "A" DIM. | FIG. | NOTES |
|-------------|------|---------------------|---------|------|------|----------|---------------|------|-------|--------------|----------|------|---------|
| D134 | SP | 1/25 | 115 | 1500 | 1 | 1.6 | Totally Encl. | CW | SLV | 5/16 X 2 1/4 | 4 1/4 | A | |
| D1138 | SP | 1/50 - 1/80 - 1/140 | 115 | 1500 | 3 | .9-.6-.5 | Open Vent. | CW | SLV | 5/16 X 2 1/2 | 4 | B | |
| D135 | SP | 1/25 | 115 | 1500 | 1 | 1.6 | Totally Encl. | CCW | SLV | 5/16 X 2 1/4 | 4 1/4 | A | |
| D192 | SP | 1/25 | 230 | 1500 | 1 | 0.9 | Totally Encl. | CW | SLV | 5/16 X 2 1/4 | 4 1/4 | C | |
| D226 | SP | 1/20 | 115 | 1500 | 1 | 1.6 | Totally Encl. | CW | BALL | 5/16 X 2 1/4 | 4 1/4 | C | |
| D227 | SP | 1/20 | 115 | 1500 | 1 | 1.7 | Totally Encl. | CCW | BALL | 5/16 X 2 1/4 | 4 1/4 | A | |
| D334 | SP | 1/15 | 230 | 1500 | 1 | 1.4 | Totally Encl. | CW | BALL | 5/16 X 3 | 4 3/4 | C | |
| D234 | SP | 1/15 | 115 | 1500 | 1 | 2.2 | Totally Encl. | CW | SLV | 5/16 X 2 1/4 | 4 3/4 | C | |
| D235 | SP | 1/12 | 115 | 1580 | 1 | 2.2 | Totally Encl. | CCW | SLV | 5/16 X 2 1/4 | 4 3/4 | C | |
| D138 | SP | 1/25 | 115 | 1500 | 1 | 1.6 | Totally Encl. | CW | SLV | 5/16 X 2 5/8 | 4 1/2 | D | |
| D238 | SP | 1/15 | 115 | 1500 | 1 | 2.3 | Totally Encl. | CW | SLV | 5/16 X 2 5/8 | 4 1/2 | D | 80 |
| D167 | SP | 1/70 | 115 | 1500 | 1 | 0.7 | Open Vent. | CW | SLV | 1/4 X 3 | 2 7/8 | E | |
| D169 | SP | 1/70 | 115 | 1500 | 1 | 0.7 | Open Vent. | CCW | SLV | 1/4 X 3 | 3 | E | |
| D130 | SP | 1/40 | 115 | 1500 | 1 | 1 | Open Vent. | CW | SLV | 5/16 X 4 1/8 | 3 1/3 | E | |
| D131 | SP | 1/40 | 115 | 1500 | 1 | 1 | Open Vent. | CCW | SLV | 5/16 X 2 1/4 | 3 1/3 | E | |
| D330 | SP | 1/40 | 230 | 1500 | 1 | 0.5 | Open Vent. | CW | SLV | 5/16 X 2 1/4 | 3 7/8 | E | |
| D1173 | SP | 1/30 | 115 | 1500 | 1 | 1.2 | Open Vent. | CW | BALL | 5/16 X 2 1/2 | 3 7/8 | F | |
| D504 | PSC | 1/8 | 115/230 | 1500 | 1 | 1.6-.8 | Open Vent. | REV | SLV | 5/16 X 3 1/2 | 5 1/2 | G | 81, 173 |

NOTES: 80: With conduit box 81: PSC motor requiring a 10 MFD 370V cap 173: 3.9" diameter



FIG. A D134, D135, D227



FIG. B D1138



FIG. C D192, D226, D334, D234, D235



FIG. D D138, D238



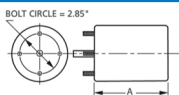
FIG. E D167, D169, D130, D131, D330



FIG. F D1173



FIG. G D504



Thermally protected • UL recognized • CSA or ULc certified
NOTE: Rotation is determined by looking at shaft end. Shaft length is measured from motor face.

▶ NEW ITEM! See page 113 for a complete listing of all our new products.

3.3" Diameter



| FASCO MODEL | TYPE | HP | VOLTS | RPM | SPD. | AMPS | ENCLOSURE | ROT. | BRNG. | SHAFT DIM. | "A" DIM. | FIG. | NOTES |
|-------------|------|--------------------|-------|------|------|-------------|---------------|------|-------|----------------------|----------|------|-------|
| D1111 | SP | 1/18 - 1/30 | 115 | 1330 | 2 | 2.4-1.6 | Open Vent. | CCW | SLV | 3 1/8 X 5/16 X 2 3/8 | 3 1/2 | A | 82 |
| D366 | SP | 1/14 - 1/25 | 115 | 1550 | 2 | 2.5-1.5 | Open Vent. | DS | SLV | 6 3/8 X 5/16 X 6 3/8 | 3 1/4 | B | |
| D367 | SP | 1/12 - 1/20 - 1/30 | 115 | 1550 | 3 | 3-2.1-1.7 | Open Vent. | DS | SLV | 5 3/4 X 5/16 X 5 3/4 | 3 5/8 | B | |
| D325 | SP | 1/10 - 1/30 | 115 | 1550 | 2 | 2.5-2.3 | Open Vent. | CCW | SLV | 1 3/4 X 5/16 X 2 3/8 | 3 1/2 | C | 82 |
| D1176 | PSC | 1/15 - 1/25 | 115 | 1550 | 2 | .9-.8 | Totally Encl. | DS | SLV | 4 7/8 X 3/8 X 4 7/8 | 4 | D | 1 |
| D323 | PSC | 1/15 - 1/20 - 1/35 | 115 | 1550 | 3 | 1-.8-.6 | Totally Encl. | DS | SLV | 2 3/4 X 5/16 X 2 3/4 | 3 3/4 | E | 83, 9 |
| D326 | PSC | 1/10 - 1/20 - 1/25 | 115 | 1550 | 3 | 2.2-1.8-1.5 | Open Vent. | DS | BALL | 5 1/2 X 5/16 X 3 | 4 1/8 | F | 84 |

NOTES: 1: 4M 370V capacitor 9: 3M 370V capacitor 82: Rotation determined by viewing lug end 83: Totally enclosed, Sears-Whirlpool 5000-8000 BTU units.
84: 4M 370V capacitor (similar to GE WJ94X306)



FIG. A **D1111**



FIG. B **D366, D367**



FIG. C **D325**



FIG. D **D1176**



FIG. E **D323**



FIG. F **D326**



| FASCO MODEL | TYPE | HP | VOLTS | RPM | SPD. | AMPS | ENCLOSURE | ROT. | BRNG. | SHAFT DIM. | "A" DIM. | FIG. | NOTES |
|-------------|------|---------------------|-------------|------|------|--------|---------------|------|-------|----------------------|----------|------|-----------------|
| D418 | SP | 1/50 | 115 | 1550 | 1 | 1.1 | Open Vent. | CW | BALL | 1/4 X 3 | 5 1/2 | A | 33, 41 |
| D415 | SP | 1/40 | 115 | 1550 | 1 | 1.1 | Open Vent. | CCW | BALL | 1/4 X 3 | 5 1/2 | A | 33, 41 |
| D1191 | SP | 1/40 | 460 | 3200 | 1 | 0.37 | Open Vent. | CCW | BALL | 1/4 X 2 1/2 | 5 3/4 | B | 33, 41, 131 |
| D1192 | SP | 1/40 | 115 | 3000 | 1 | 0.7 | Open Vent. | CCW | SLV | 5/16 X 1 1/2 | 5 1/3 | C | 41 |
| D1196 | SP | 1/33 | 115 | 3200 | 1 | 1.5 | Open Vent. | CCW | SLV | 5/16 X 2 1/3 | 3 1/4 | D | 33 |
| D1198 | SP | 1/30 | 115 | 3200 | 1 | 1.5 | Open Vent. | CCW | SLV | 5/16 X 2 1/4 | 3 1/8 | E | 33 |
| D1194 | SP | 1/25 | 115 | 3200 | 1 | 1.7 | Open Vent. | CW | BALL | 5/16 X 1 1/3 | 5 1/2 | F | 41 |
| D1193 | SP | 1/22 | 115 | 3000 | 1 | 1.2 | Open Vent. | CCW | SLV | 5/16 X 2 1/3 | 2 7/8 | G | 33 |
| D1188 | SP | 1/15 | 208-230/460 | 3000 | 1 | 1.1-.6 | Open Vent. | CW | BALL | 5/16 X 2 | 6 5/8 | H | 33, 41 |
| D408 | SP | 1/150 | 115 | 3000 | 1 | 0.5 | Open Vent. | CW | SLV | 1/4 X 1 1/2 | | I | 86, 131, 41 |
| D1167 | SP | 1/40 | 208-230 | 3000 | 1 | 0.55 | Open Vent. | CCW | SLV | 5/16 X 1 | | J | 41 |
| D455 | SP | 1/30 | 115/230 | 3000 | 1 | 1.3-7 | Open Vent. | CCW | BALL | 1/4 X 3 7/8 | | K | 131, 41 |
| D222 | SP | 1/25 | 115 | 1500 | 1 | 1.6 | Totally Encl. | DS | SLV | 2 1/4 X 5/16 X 2 1/4 | 2 7/8 | L | 85 |
| D520 | SP | 1/20 - 1/50 - 1/100 | 115 | 1500 | 3 | 2-1-.6 | Totally Encl. | CW | SLV | 1/4 X 2 1/4 | 3 1/8 | M | 85, 49, 176 |
| D1186 | PSC | 1/16 | 460 | 3450 | 1 | 0.3 | Open Vent. | CCW | BALL | 5/16 X 3 1/3 | 4 3/4 | N | 29 |
| D1184 | PSC | 1/16 | 460 | 3450 | 1 | 0.3 | Open Vent. | CCW | BALL | 5/16 X 3 1/3 | 4 3/4 | N | 10, 29 |
| D410 | PSC | 1/10 | 115 | 3000 | 1 | 1.5 | Open Vent. | REV | BALL | 1/4 X 3 3/4 | 7 1/8 | O | 17, 131, 33, 41 |
| D412 | PSC | 1/9 | 230 | 3000 | 1 | 0.7 | Open Vent. | REV | BALL | 1/4 X 3 3/4 | 6 5/8 | O | 29, 131, 33, 41 |

NOTES: 10: Has hall effect sensor 17: 7.5M 370V Cap installed 29: 4M 370V capacitor included 33: Stainless steel shaft 41: Includes centrifugal switch 49: Mechanically Reversible 85: Air Over 86: Drilled & Tapped Holes (No. 8-32NC) in face of case at shaft end for mounting in various Coleman mobile home furnace applications, also has mounting studs. 131: Motors include shaft bushing 176: Endshield on D520 is easily removed, allowing rotor and shaft to be rotated, thereby reversing motor rotation.



FIG. A D418, D415



FIG. B D1191



FIG. C D1192



FIG. D D1196



FIG. E D1198



FIG. F D1194



FIG. G D1193



FIG. H D1188



FIG. I D408



FIG. J D1167



FIG. K D455



FIG. L D222



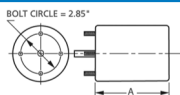
FIG. M D520



FIG. N D1186, D1184



FIG. O D410, D412



Thermally protected • UL recognized • CSA or ULc certified
NOTE: Rotation is determined by looking at shaft end. Shaft length is measured from motor face.

3.3" Diameter

Flue Exhaust and Draft Booster Blower Motors



| FASCO MODEL | TYPE | HP | VOLTS | RPM | SPD. | AMPS | ENCLOSURE | ROT. | BRNG. | SHAFT DIM. | FIG. | NOTES |
|-------------|------|------|---------|------|------|------|---------------|------|-------|--------------|------|--------------|
| D454 | SP | 1/30 | 115 | 3000 | 1 | 1.5 | Open Vent. | CW | SLV | 1/4 X 1 1/2 | A | 177, 131, 41 |
| D456 | SP | 1/15 | 115/230 | 3000 | 1 | 2-1 | Totally Encl. | CW | BALL | 1/4 X 2 3/4 | B | 33, 131, 41 |
| D458 | SP | 1/15 | 208-230 | 3000 | 1 | 1 | Open Vent. | CW | BALL | 1/4 X 2 3/4 | B | 33, 131, 41 |
| D457 | SP | 1/15 | 115/230 | 3000 | 1 | 2-1 | Open Vent. | CCW | BALL | 1/4 X 2 3/4 | B | 33, 131, 41 |
| D1174 | SP | 1/15 | 460 | 3000 | 1 | 0.6 | Open Vent. | CW | BALL | 1/4 X 2 1/2 | B | 41 |
| D1171 | SP | 1/15 | 460 | 3000 | 1 | 0.6 | Open Vent. | CCW | BALL | 1/4 X 2 1/2 | B | 131, 41 |
| D1169 | SP | 1/10 | 208-230 | 3000 | 1 | 1.5 | Open Vent. | CCW | SLV | 5/16 X 1 | C | 41 |
| D1179 | SP | 1/30 | 115 | 3000 | 1 | 1.5 | Open Vent. | CW | SLV | 5/16 X 2 | D | 33 |
| D1190 | SP | 1/30 | 115 | 3000 | 1 | 1.6 | Open Vent. | CW | SLV | 5/16 X 1 3/4 | E | 33 |
| D1180 | SP | 1/20 | 115 | 3300 | 1 | 1.9 | Open Vent. | CW | SLV | 5/16 X 2 1/8 | D | 33 |

NOTES: 33: Stainless steel shaft ,41: Includes centrifugal switch ,131: Motors include shaft bushing ,177: Used in Economite, "E-20", LS1/Miller and Mid Continent gas units.



FIG. A D454



FIG. B D456, D458, D457, D1174, D1171



FIG. C D1169



FIG. D D1179, D1180



FIG. E D1190