

BALDOR • RELIANCE

Customer information packet

M1209T

7.5/1.9HP, 1735/865RPM, 3PH, 60HZ, 213T, 3734

Class - None

Division - Not Applicable

Copyright © All product information within this document is subject to ABB Motors and Mechanical Inc. copyright © protection, unless otherwise noted.

4/18/2024 3:03:07 PM

Specifications

Enclosure	OPEN
Frame	213T
Frame Material	Steel
Frequency	60.00 Hz
Motor Letter Type	Three Phase
Output @ Frequency	7.500 HP @ 60 HZ 1.900 HP @ 60 HZ
Phase	3
Synchronous Speed @ Frequency	900 RPM @ 60 HZ
Voltage @ Frequency	460.0 V @ 60 HZ
XP Class and Group	None
XP Division	Not Applicable
Agency Approvals	UR CSA
Ambient Temperature	40 °C
Auxillary Box	No Auxillary Box
Auxillary Box Lead Termination	None
Base Indicator	Rigid
Bearing Grease Type	Polyrex EM (-20F +300F)
Blower	None
Current @ Voltage	9.500 A @ 460.0 V
Design Code	B
Drip Cover	No Drip Cover
Duty Rating	CONT
Electrically Isolated Bearing	Not Electrically Isolated
Feedback Device	NO FEEDBACK
Front Shaft Indicator	None
Heater Indicator	No Heater
High Voltage Full Load Amps	3.8 a
Insulation Class	F
Inverter Code	Not Inverter
KVA Code	K

Part detail

Revision	A
Type	AC
Mech. spec.	37B001
Base	
Status	PRD/A
Elec. spec.	37WGZ657
Layout	37LYB001
Eff. date	02-08-2024
CD Diagram	CD0032
Poles	04/08
Leads	6#14
Proprietary	False
Created date	12-11-2020

Lifting Lugs	Standard Lifting Lugs
Locked Bearing Indicator	No Locked Bearing
Motor Lead Quantity/Wire Size	6 @ 14 AWG
Motor Lead Termination	Flying Leads
Motor Standards	NEMA
Motor Type	3734M
Mounting Arrangement	F1
Number of Poles	4 8
Overall Length	16.32 IN
Product Family	General Purpose
Pulley End Bearing Type	Ball
Pulley Face Code	Standard
Pulley Shaft Indicator	Standard
Rodent Screen	None
Service Factor	1.15
Shaft Diameter	1.375 IN
Shaft Ground Indicator	No Shaft Grounding
Shaft Rotation	Reversible
Shaft Slinger Indicator	No Slinger
Speed	1735 rpm 865 rpm
Speed Code	2S-1W-VT
Starting Method	Direct on line
Thermal Device - Bearing	None
Thermal Device - Winding	None
Vibration Sensor Indicator	No Vibration Sensor
Winding Thermal 1	None
Winding Thermal 2	None

Nameplate

NP1256L									
CAT.NO.	M1209T								
SPEC.	37B01Z657								
HP	7.5/1.9								
VOLTS	460								
AMP	9.5/3.8								
RPM	1735/865								
FRAME	213T		HZ	60		PH	3		
SER.F.	1.15	CODE	K	DES	B	CLASS	F		
NEMA-NOM-EFF		PF							
RATING	40C AMB-CONT								
CC									
DE	6307		ODE	6206					
ENCL	OPEN	SN							

Accessories

Part number	Description	Multiplier
37-1404	C FACE KIT	A8

AC Induction Motor Performance Data

Record # 85808

Typical performance - not guaranteed values

Winding: 37WGZ657-R001		Type: 3734M		Enclosure: OPEN	
Nameplate Data			460 V, 60 Hz: High Speed Connection		
Rated Output (HP)	7.5/1.9	Full Load Torque	22.77 LB-FT		
Volts	460	Start Configuration	direct on line		
Full Load Amps	9.5/3.8	Breakdown Torque	74.39 LB-FT		
R.P.M.	1735/865	Pull-up Torque	61.47 LB-FT		
Hz	60	Locked-rotor Torque	68.88 LB-FT		
NEMA Design Code	B	Starting Current	72.78 A		
Service Factor (S.F.)	1.15	No-load Current	4.27 A		
NEMA Nom. Eff.	0	Line-line Res. @ 25°C	2.5 Ω		
Rating - Duty	40C AMB-CONT	Temp. Rise @ Rated Load	56°C		
S.F. Amps		Temp. Rise @ S.F. Load	70°C		
		Locked-rotor Power Factor	57.2		
		Rotor inertia	0.836 lb-ft ²		

Load Characteristics 460 V, 60 Hz, 7.5 HP

% of Rated Load	25	50	75	100	125	150	S.F.
Power Factor	48	71	81	86	89	89	87
Efficiency	79.6	85.6	86.7	86	84.7	82.7	84.2
Speed	1784	1769	1753	1735	1715	1693	1707
Line amperes	4.79	5.92	7.58	9.47	11.58	13.98	11

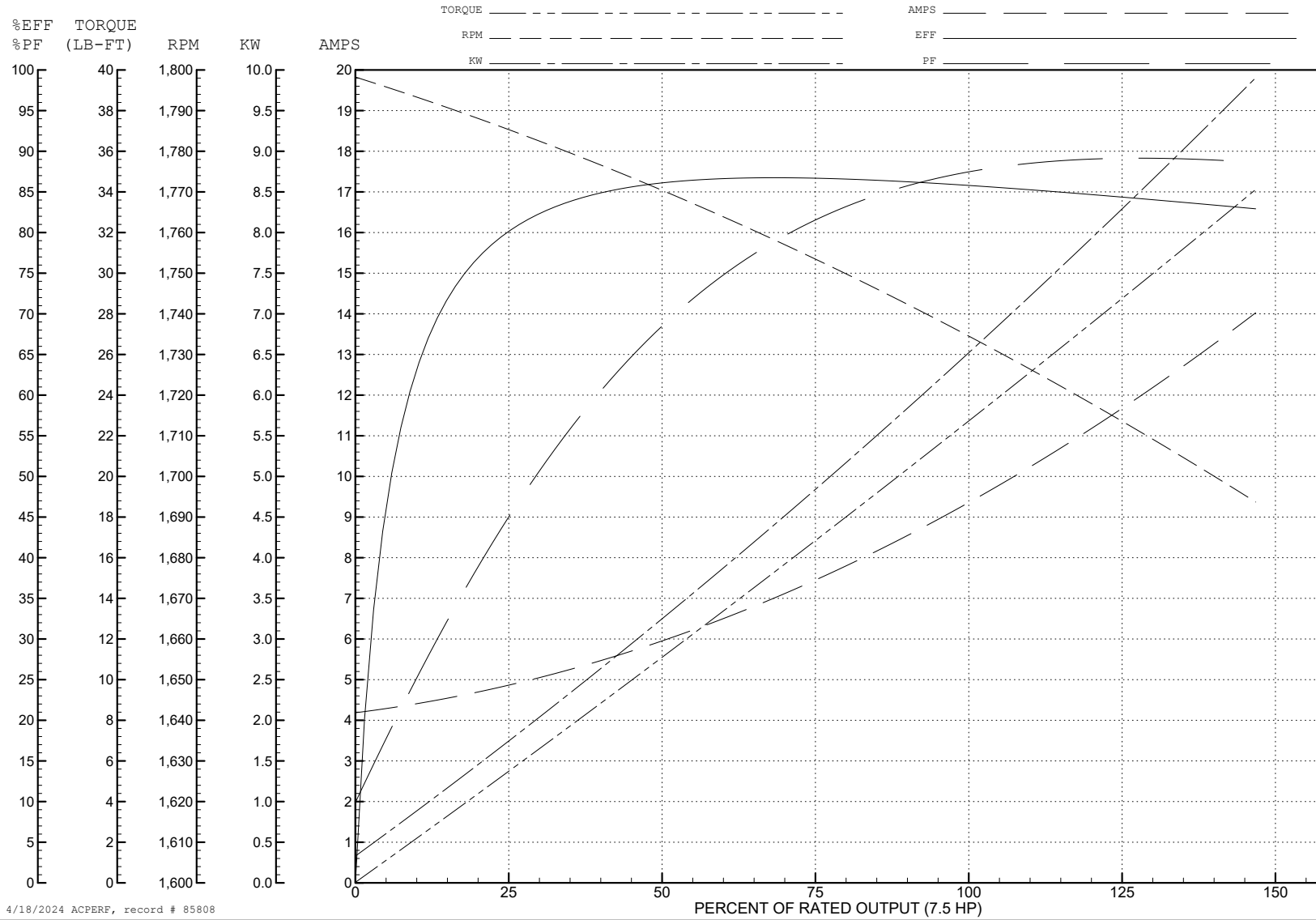
ABB Motors and Mechanical Inc.

WINDING # 37WGZ657

Typical performance - not guaranteed values.

7.5 HP 3 PH 60 HZ 1735 RPM 460 V 3734M

TORQUES (LB-FT): PO=74.39 PU=61.47 LR=68.88 LRA=72.78



4/18/2024 ACPERF, record # 85808

AC Induction Motor Performance Data

Record # 85809

Typical performance - not guaranteed values

Winding: 37WGZ657-R001			Type: 3734M			Enclosure: OPEN		
Nameplate Data						460 V, 60 Hz: Low Speed Connection		
Rated Output (HP)	7.5/1.9		Full Load Torque	11.53 LB-FT				
Volts	460		Start Configuration	direct on line				
Full Load Amps	9.5/3.8		Breakdown Torque	32.79 LB-FT				
R.P.M.	1735/865		Pull-up Torque	22.69 LB-FT				
Hz	60	Phase	3	Locked-rotor Torque	25.21 LB-FT			
NEMA Design Code	B	KVA Code	K	Starting Current	17.82 A			
Service Factor (S.F.)	1.15		No-load Current	2.98 A				
NEMA Nom. Eff.	0	Power Factor	0	Line-line Res. @ 25°C	9.99 Ω			
Rating - Duty	40C AMB-CONT		Temp. Rise @ Rated Load	54°C				
S.F. Amps			Temp. Rise @ S.F. Load	63°C				
			Locked-rotor Power Factor	51.5				
			Rotor inertia	0.836 lb-ft ²				

Load Characteristics 460 V, 60 Hz, 1.9 HP

% of Rated Load	25	50	75	100	125	150	S.F.
Power Factor	25	39	51	60	67	71	62
Efficiency	60.7	72.2	76	77	76.6	75.4	74.7
Speed	892	883	874	866	855	842	841
Line amperes	3.05	3.21	3.47	3.83	4.3	4.87	4.35

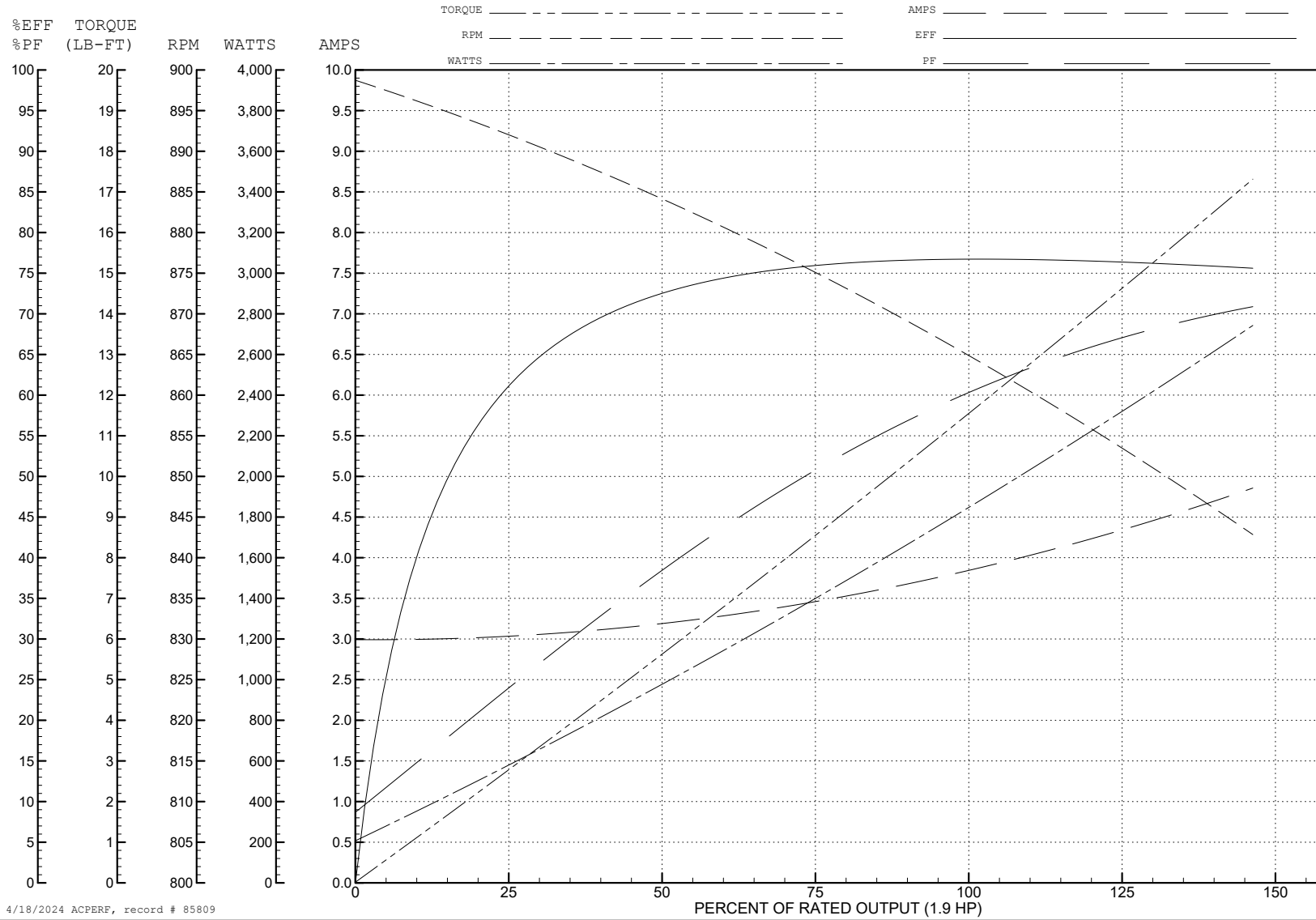
ABB Motors and Mechanical Inc.

WINDING # 37WGZ657

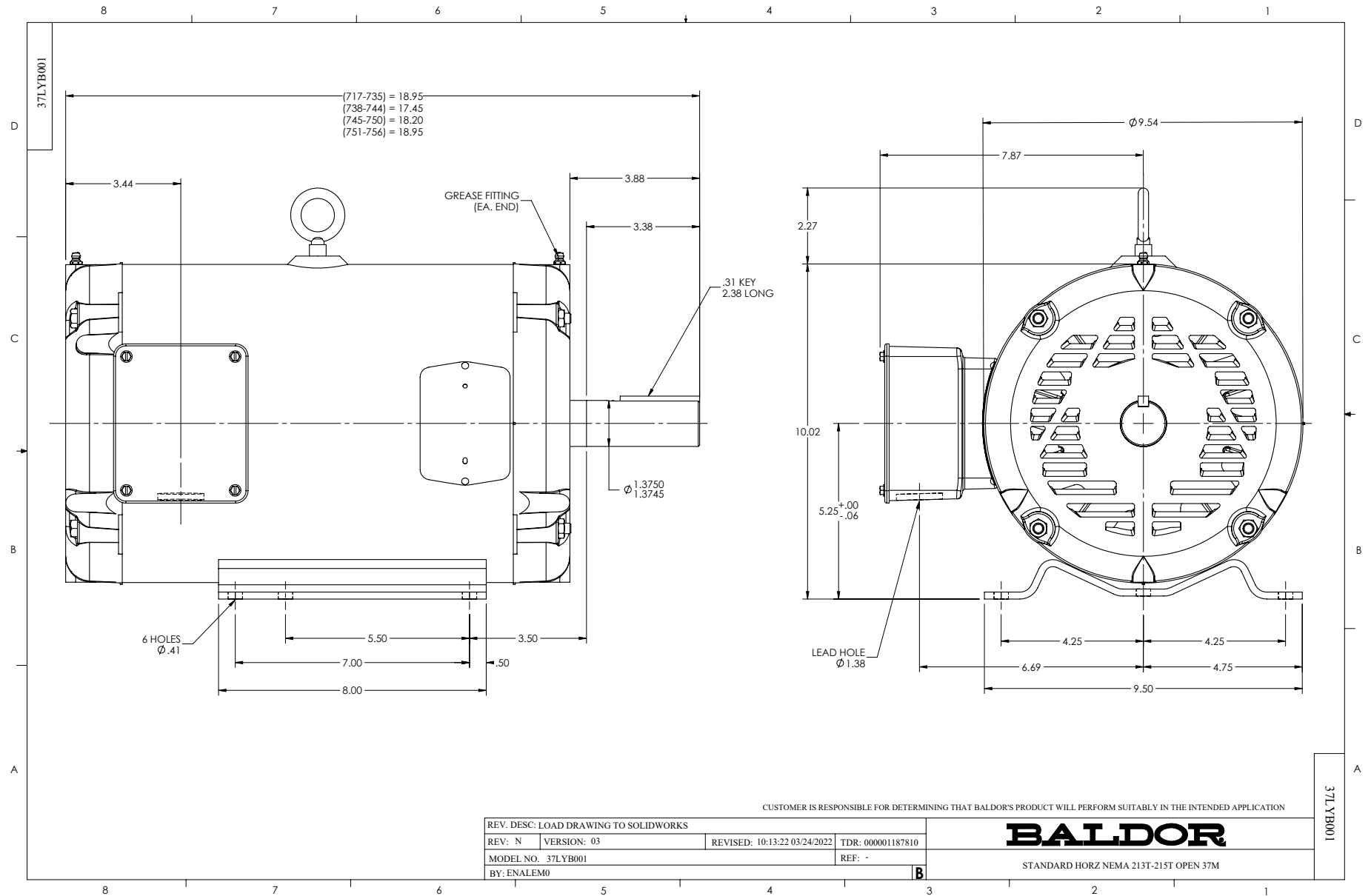
Typical performance - not guaranteed values.

1.9 HP 3 PH 60 HZ 866 RPM 460 V 3734M

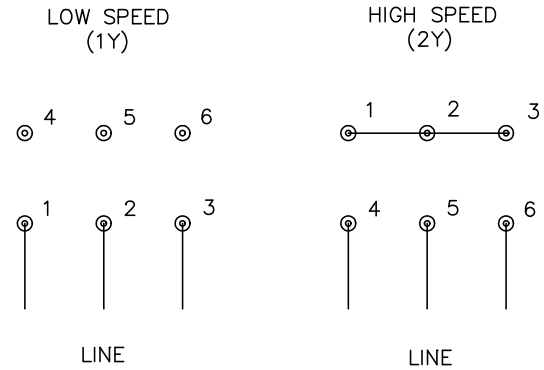
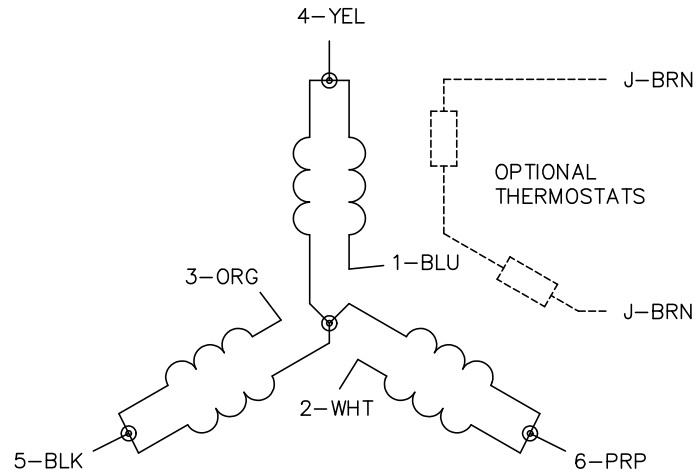
TORQUES (LB-FT): PO=32.79 PU=22.69 LR=25.21 LRA=17.82



4/18/2024 ACPERF, record # 85809



CD0032



NOTES:

1. INTERCHANGE ANY TWO LINE LEADS TO REVERSE ROTATION.
2. OPTIONAL THERMOSTATS ARE PROVIDED WHEN SPECIFIED.
3. ACTUAL NUMBER OF INTERNAL PARALLEL CIRCUITS MAY BE A MULTIPLE OF THOSE SHOWN ABOVE.
4. LEAD COLORS ARE OPTIONAL. LEADS MUST ALWAYS BE NUMBERED AS SHOWN.

CD0032

REV. DESC: REVISE TO SHOW OPTIONAL COLORS			
REV. LTR: E	BY: JLP	REVISED: 01/22/99 8:27	TDR: 0171435
CD0032		FILE: AAA00005145	MDL: -
		MTL: -	

BALDOR ELECTRIC Co.

3PH, SV, 6 LEADS, 2-SPEED 1-WINDING VARIABLE TORQUE