

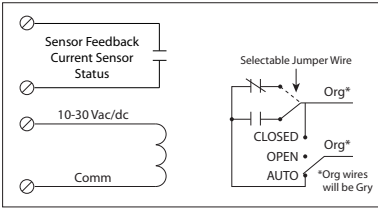
**RELAY & AC CURRENT SWITCH COMBOS**

**RIBXLS Series**

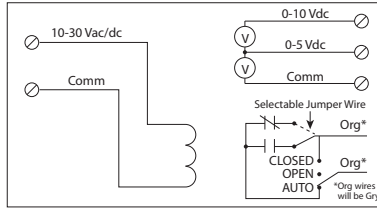
Enclosed Relay/AC Sensor Combinations, SPST + Override with 10-30 Vac/dc Coil



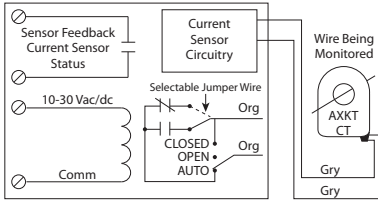
**RIBXLSA, RIBXLSF, (RIBXLSA\*)+**



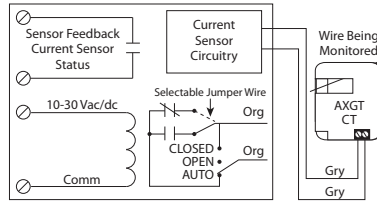
**RIBXLSV, (RIBXLSV\*)^**



**RIBXLSRA, RIBXLSRF+**



**RIBXLSJA, RIBXLSJF+**



CURRENT SENSORS

**SPECIFICATIONS**

**FUNCTIONAL DEVICES CERTIFIED FOR USE WITH ECMs**

- # Relays & Contact Type:** One (1) SPST Continuous Duty Coil
- Expected Relay Life:** 10 million cycles minimum mechanical
- Operating Temperature:** -30 to 140° F
- Humidity Range:** 5 to 95% (noncondensing)
- Operate Time:** 20ms
- Relay Status:** Red LED On = Activated
- Dimensions:** 4.00" x 4.00" x 1.80" with .50" NPT Nipple
- Wire Length:** 16", 600V Rated
- Approvals:** UL Listed, UL916, UL864, C-UL California State Fire Marshal
- Housing Rating:** UL Accepted for Use in Plenum, NEMA 1
- Gold Flash:** Yes
- Override Switch:** Yes

- Coil Current:**  
 33 mA @ 10 Vac  
 35 mA @ 12 Vac  
 46 mA @ 24 Vac  
 55 mA @ 30 Vac  
 13 mA @ 10 Vdc  
 15 mA @ 12 Vdc  
 18 mA @ 24 Vdc  
 20 mA @ 30 Vdc
- Coil Voltage Input:**  
 10-30 Vac/dc ; 50-60 Hz  
 Drop Out = 2.1 Vac / 2.8 Vdc  
 Pull In = 9 Vac / 10 Vdc

- + Sensor Contact:**
  - When current sensor status is off (open), leakage < 30 uA @ 30Vac/dc
  - When current sensor status is on (closed), voltage drop < .3 Vac/dc @ .1 Amp
  - < 1.6 Vac/dc @ .4 Amp
- ^ Sensor Feedback Output:**
  - Voltage output is proportional to current sensor range.
  - Min. Input Impedance = 30K ohms
  - Accuracy +/- 3% full scale
  - Ripple < 10m Vac
- Notes:**
  - Normally Open or Normally Closed selected by yellow jumper wire
  - Models AXKT and AXGT CT remotes do not have contact closure circuitry and only work in conjunction with RIBXLSR and RIBXLSJ models, respectively.

Model#	Sensing Range	Type *	Threshold	Sensor Output	Remote Style	Resistive	Contact Ratings
RIBXLSF <b>ECMs</b>	.50-10 Amps	Internal w/ contact status	Fixed, .50 Amp	Solid State Contact 30 Vac/dc, 0.4 Amp		10 Amp	10 Amp Resistive @ 277 Vac 480 VA Pilot Duty @ 277 Vac 480 VA Ballast @ 277 Vac
RIBXLSA <b>ECMs</b>	.50-10 Amps	Internal w/ contact status	Adjustable	Solid State Contact 30 Vac/dc, 0.4 Amp		10 Amp	Not rated for Electronic Ballast 600 Watt Tungsten @ 120 Vac (N/O) 240 Watt Tungsten @ 120 Vac (N/C) 1/3 HP @ 120-240 Vac (N/O) 1/6 HP @ 120-240 Vac (N/C) 1/4 HP @ 277 Vac (N/O) 1/8 HP @ 277 Vac (N/C)
RIBXLSV	0-10 Amps	Internal w/ voltage output	Analog	0-5 Vdc 0-10 Vdc		10 Amp	
RIBXLSRF <b>ECMs</b>	1.25-150 Amps	External w/ contact status	Fixed, 1.25 Amp	Solid State Contact 30 Vac/dc, 0.4 Amp	Model AXKT: (Solid Core Remote)	10 Amp	
RIBXLSRA <b>ECMs</b>	1.25-150 Amps	External w/ contact status	Adjustable	Solid State Contact 30 Vac/dc, 0.4 Amp	Model AXKT: (Solid Core Remote)	10 Amp	
RIBXLSJF <b>ECMs</b>	3-150 Amps	External w/ contact status	Fixed, 3 Amp	Solid State Contact 30 Vac/dc, 0.4 Amp	Model AXGT: (Split Core Remote)	10 Amp	
RIBXLSJA <b>ECMs</b>	3-150 Amps	External w/ contact status	Adjustable	Solid State Contact 30 Vac/dc, 0.4 Amp	Model AXGT: (Split Core Remote)	10 Amp	
RIBXLSA	.125-5 Amps	Internal w/ contact status	Adjustable	Solid State Contact 30 Vac/dc, 0.4 Amp		5 Amp	5 Amp Resistive @ 277 Vac 345 VA Pilot Duty @ 120/240 Vac (N/O) 268 VA Pilot Duty @ 277 Vac (N/O) 211 VA Pilot Duty @ 120/240 Vac (N/C) 175 VA Pilot Duty @ 277 Vac (N/C) 1/3 HP @ 120-240 Vac (N/O) 1/6 HP @ 120-240 Vac (N/C) 1/4 HP @ 277 Vac (N/O) 1/8 HP @ 277 Vac (N/C)
RIBXLSV	0-5 Amps	Internal w/ voltage output	Analog	0-5 Vdc 0-10 Vdc		5 Amp	

\* = Internal current sensor monitors current through common contact of relay.

**ECMs** = FDI Certified for use with electronically commutated motors