

BALDOR • RELIANCE

Customer information packet

RM3108A

.5 AIR OVERHP, 1725RPM, 3PH, 60HZ, 56, 3413M

Class - None

Division - Not Applicable

Copyright © All product information within this document is subject to ABB Motors and Mechanical Inc. copyright © protection, unless otherwise noted.

7/23/2024 10:02:59 AM

Specifications

Enclosure	OPEN
Frame	56
Frame Material	Steel
Frequency	60.00 Hz
Haz Area Class and Group	None
Haz Area Division	Not Applicable
Motor Letter Type	Three Phase
Output @ Frequency	.500 HP @ 60 HZ
Phase	3
Synchronous Speed @ Frequency	1800 RPM @ 60 HZ
Voltage @ Frequency	230.0 V @ 60 HZ 460.0 V @ 60 HZ
Agency Approvals	UR CSA
Ambient Temperature	40 °C
Auxillary Box	No Auxillary Box
Auxillary Box Lead Termination	None
Base Indicator	Resilient
Bearing Grease Type	Polyrex EM (-20F +300F)
Blower	None
Current @ Voltage	.900 A @ 460.0 V 1.800 A @ 230.0 V 2.300 A @ 208.0 V
Design Code	B
Drip Cover	No Drip Cover
Duty Rating	CONT
Efficiency @ 100% Load	72.0 %
Electrically Isolated Bearing	Not Electrically Isolated
Feedback Device	NO FEEDBACK
Front Face Code	Resilient Mount
Front Shaft Indicator	None
Heater Indicator	No Heater

Part detail

Revision	L
Type	AC
Mech. spec.	34K019
Base	
Status	PRD/A
Elec. spec.	34WGR030
Layout	34LYK019
Eff. date	07-08-2024
CD Diagram	CD0007
Poles	04
Leads	12#18
Proprietary	False
Created date	04-05-2013

High Voltage Full Load Amps	0.9 a
Insulation Class	B
Inverter Code	Not Inverter
KVA Code	J
Lifting Lugs	No Lifting Lugs
Locked Bearing Indicator	No Locked Bearing
Motor Lead Exit	Terminal Panel
Motor Lead Quantity/Wire Size	12 @ 18 AWG
Motor Lead Termination	Flying Leads
Motor Standards	NEMA
Motor Type	3413M
Mounting Arrangement	F1
Number of Poles	4
Overall Length	10.97 IN
Power Factor	68
Product Family	General Purpose
Pulley End Bearing Type	Ball
Pulley Face Code	Resilient Mount
Pulley Shaft Indicator	Standard
Rodent Screen	None
RoHS Status	ROHS COMPLIANT
Service Factor	1.25
Shaft Diameter	0.625 IN
Shaft Extension Location	Pulley End
Shaft Ground Indicator	No Shaft Grounding
Shaft Rotation	Reversible
Shaft Slinger Indicator	No Slinger
Speed	1725 rpm
Speed Code	Single Speed
Starting Method	Direct on line
Thermal Device - Bearing	None
Thermal Device - Winding	None
Vibration Sensor Indicator	No Vibration Sensor
Winding Thermal 1	Automatic Thermal Overload

Winding Thermal 1 Location

SB

Winding Thermal 2

None

Nameplate

NP1257L									
CAT.NO.	RM3108A								
SPEC.	34K019R030G1								
HP	.5 AIR OVER								
VOLTS	230/460								
AMP	1.8/.9								
RPM	1725								
FRAME	56			HZ	60		PH	3	
SER.F.	1.25	CODE	J	DES	B	CL	B		
NEMA-NOM-EFF	72	PF	68						
RATING	40C AMB-CONT								
CC									
DE	6203	ODE	6203						
ENCL	OPEN	SN							
	SFA 2/1								

AC Induction Motor Performance Data

Record # 41850

Typical performance - not guaranteed values

Winding: 34WGR030-R001		Type: 3413M	Enclosure: OPAO	
Nameplate Data			460 V, 60 Hz: High Voltage Connection	
Rated Output (HP)	.5	Full Load Torque	1.51 LB-FT	
Volts	230/460	Start Configuration	direct on line	
Full Load Amps	1.8/9	Breakdown Torque	4.56 LB-FT	
R.P.M.	1725	Pull-up Torque	2.77 LB-FT	
Hz	60	Locked-rotor Torque	3.81 LB-FT	
NEMA Design Code	B	Starting Current	4.91 A	
Service Factor (S.F.)	1.25	No-load Current	0.669 A	
NEMA Nom. Eff.	72	Line-line Res. @ 25°C	48.65 Ω	
Rating - Duty	40C AMB-CONT	Temp. Rise @ Rated Load		
S.F. Amps	2/1	Temp. Rise @ S.F. Load		
		Locked-rotor Power Factor	69	
		Rotor inertia	0.031 LB-FT ²	

Load Characteristics 460 V, 60 Hz, 0.5 HP

% of Rated Load	25	50	75	100	125	150	S.F.
Power Factor	31	46	58	68	74	79	74
Efficiency	55.9	74.4	77.4	77.4	77.8	75	77.8
Speed	1782	1767	1749	1729	1711	1685	1711
Line amperes	0.684	0.723	0.79	0.886	0.983	1.126	0.983

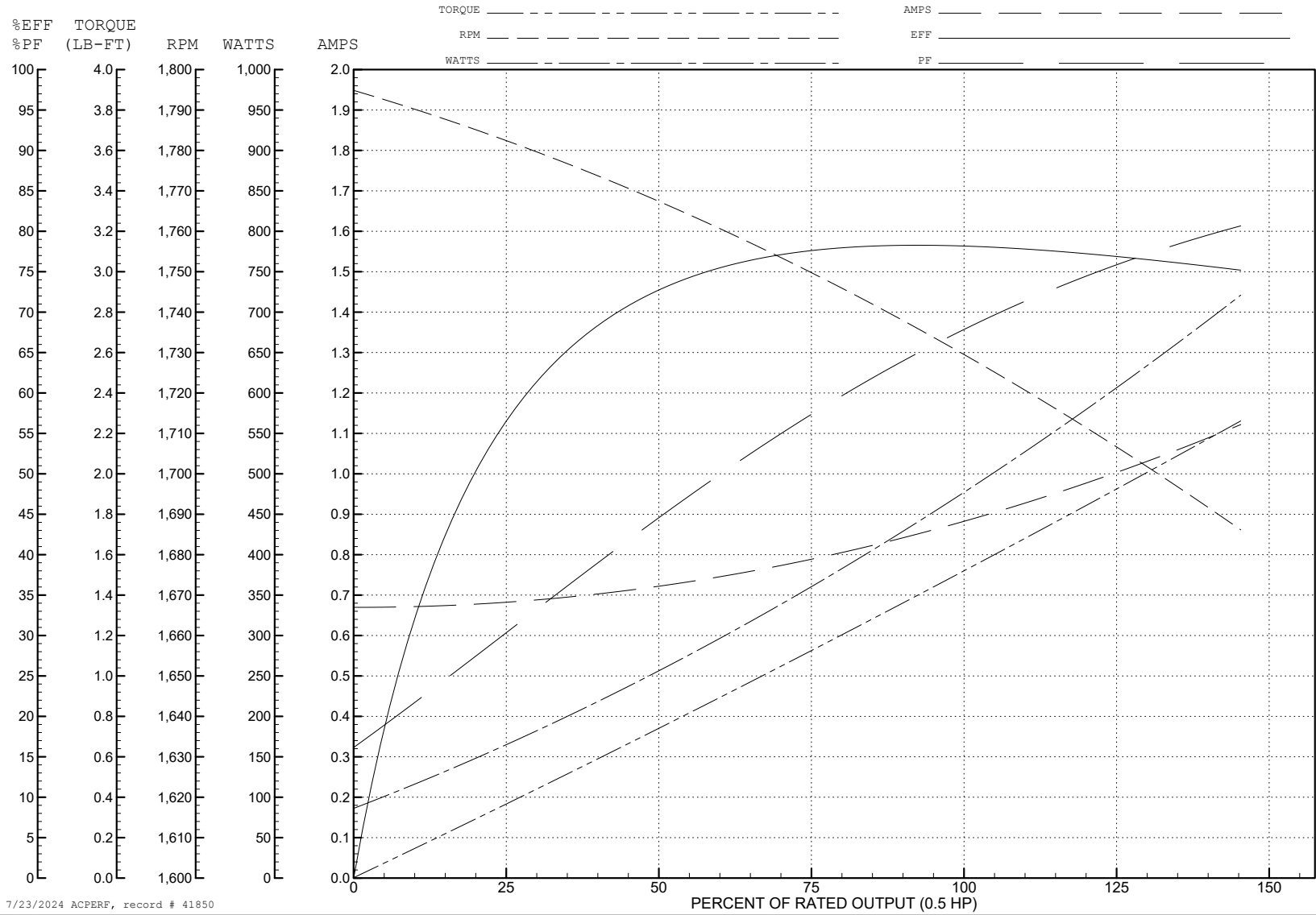
ABB Motors and Mechanical Inc.

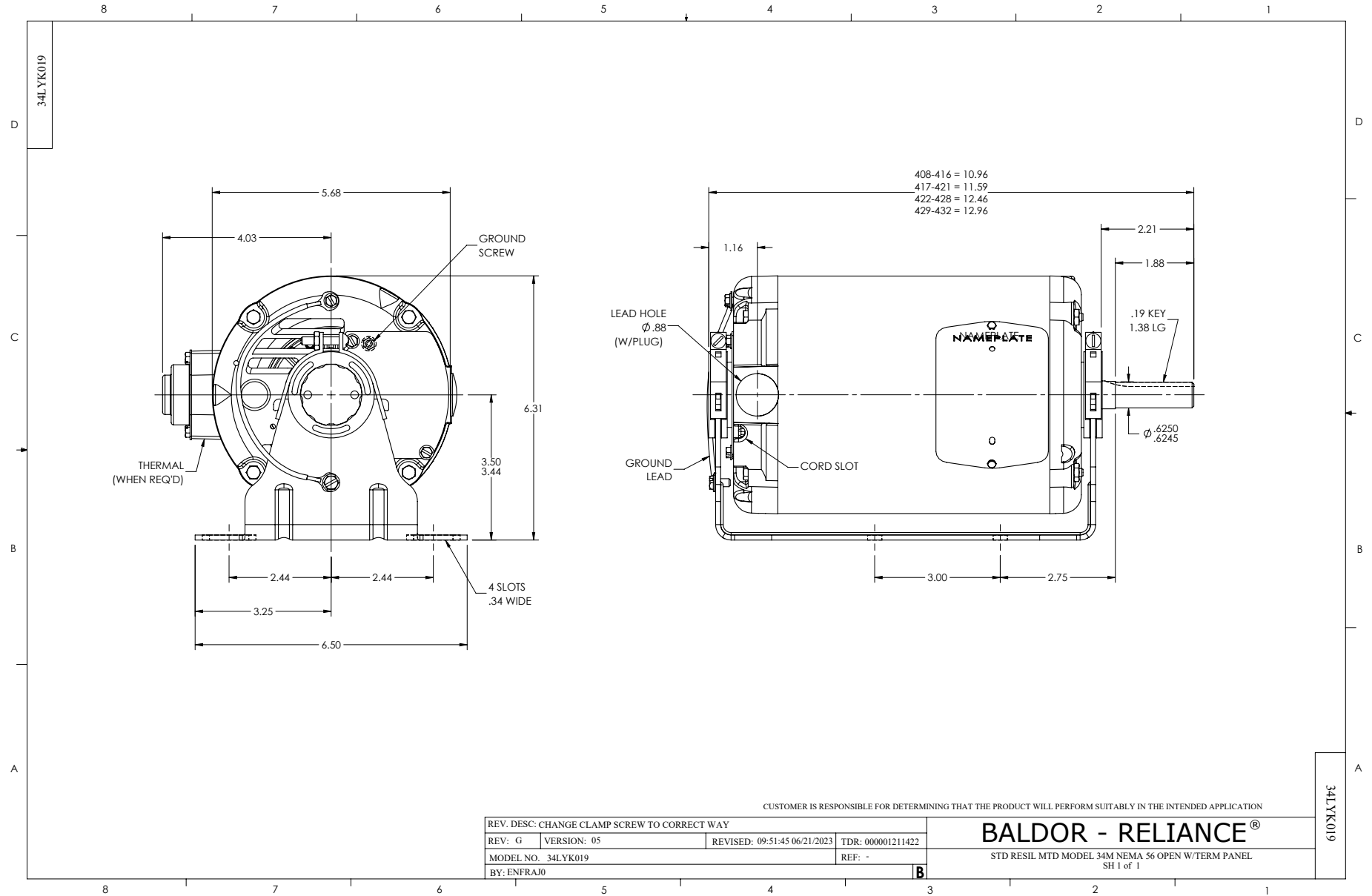
WINDING # 34WGR030

Typical performance - not guaranteed values.

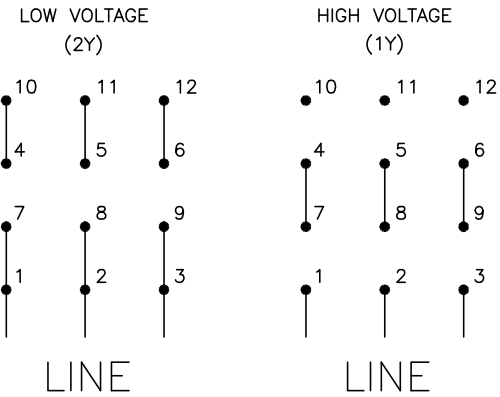
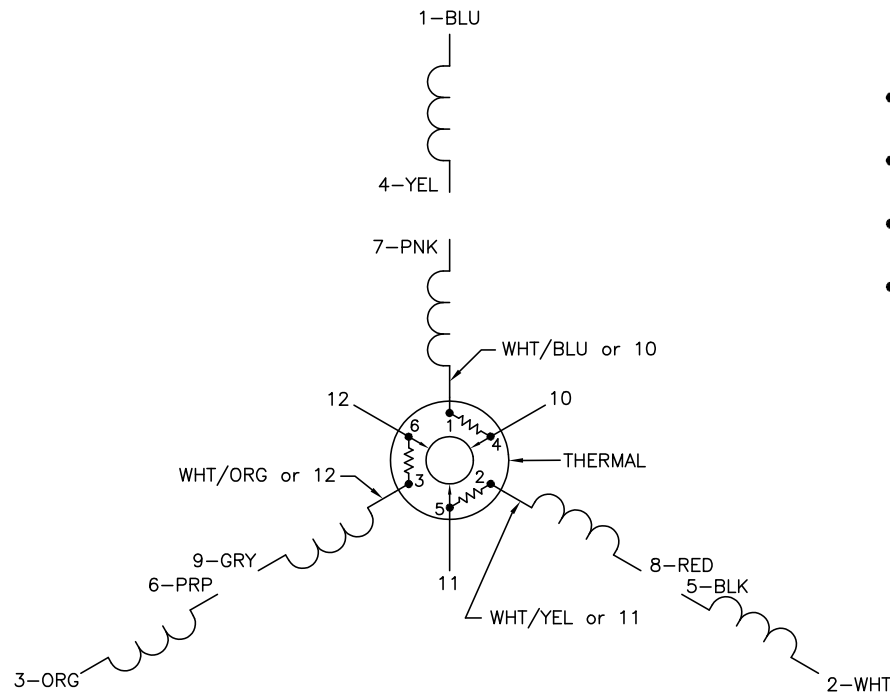
0.5 HP 3 PH 60 HZ 1725 RPM 460 V 3413M

TORQUES (LB-FT): PO=4.56 PU=2.77 LR=3.81 LRA=4.91





CD0007



NOTES:

1. INTERCHANGE ANY TWO LINE LEADS TO REVERSE ROTATION.
2. ACTUAL NUMBER OF INTERNAL PARALLEL CIRCUITS MAY VARY.
3. LEAD COLORS ARE OPTIONAL. LEADS MUST ALWAYS BE NUMBERED AS SHOWN.

CD0007

REV. DESC: ADDED "CK" PLANT CODE			
REV. LTR: E	BY: EAH	REVISED: 05/06/99 17:1	TDR: 0181040
L00000		FILE: AAA00008370	MDL: -
		MTL: -	

BALDOR ELECTRIC Co.

3PH, DV, THERMAL, 12 LEADS