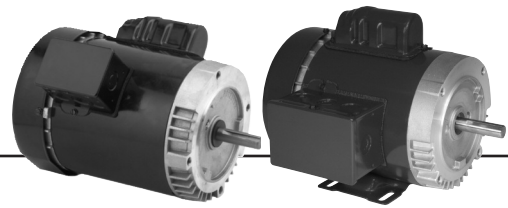


General Purpose Single Phase, Capacitor Start Totally Enclosed Fan Cooled (TEFC) C-Face



APPLICATIONS:

For use on air compressors, commercial duty pumps, conveyors, blowers and general industrial equipment.

FEATURES:

- Double Shielded Ball Bearings
- Class B Insulation
- Continuous Duty
- 40°C Ambient
- Capacitor Start
- Induction Run
- F1 Assembly
- Reversible Rotation
- 50/60 Hz Motors Have 1.0 S.F. on 50 Hz

Footed

HP	RPM	Voltage	Frame	Catalog Number	List	Discount Symbol	SF	"C" Dim. (inches)	Ship Wt. (lbs.)	Full Load Amps	Notes
1/2	3600	115/208-230	56C	EC03B	\$363	DS-3FMP	1.15	11.4	24	7.8/4.1-3.9	24, 98
	1800	100-120/200-240	56C	6212	\$565	DS-3FMP	1.25	12.0	25	6.3-5.6/3.1-2.8	18, 24, 98
	1800	115/208-230	56C	T12C2JC	\$482	DS-3FMP	1.15	11.4	23	9.0/4.3-4.5	25
3/4	3600	115/208-230	56C	T34C1JC	\$417	DS-3FMP	1.15	11.9	30	10.4/5.3-5.2	25
1	3600	115/208-230	56C	EC09B	\$508	DS-3FMP	1.15	12.1	29	12.8/6.6-6.4	24, 98
	1800	100-120/200-240	56C	T1CM2ZC	\$760	DS-3FMP	1.15	12.5	40	11.0-9.2/5.5-4.7	18, 23
	1800	115/208-230	56C	EC10B	\$623	DS-3FMP	1.15	12.4	37	13.6/7.0-6.8	24, PF
	1800	115/208-230	56HC	T1C2JHC	\$621	DS-3FMP	1.15	12.4	33	14.0/6.9-7.0	25
1-1/2	3600	115/208-230	56C	EC11B	\$650	DS-3FMP	1.15	12.6	36	16.6/9.0-8.3	24, 98, PF
	1800	115/208-230	56C	EC12B	\$729	DS-3FMP	1.15	12.4	38	14.0/7.7-7.0	18, 24, PF
	1800	115/208-230	56HC	T32C2JHC	\$736	DS-3FMP	1.15	13.9	41	14.4/8.0-7.2	18, 25
2	3600	208-230	56C	EC13B	\$780	DS-3FMP	1.15	12.9	38	9.6-9.0	18, 24, 98, PF
	1800	115/208-230	145TC	T2C2J14C	\$846	DS-3FMP	1.00	14.0	46	18.9/10.3-9.4	18, 25
	1800	115/208-230	56HC	T2C2JHC	\$846	DS-3FMP	1.15	13.9	43	18.9/10.3-9.4	18, 25

Footless

HP	RPM	Voltage	Frame	Catalog Number	List	Discount Symbol	SF	"C" Dim. (inches)	Ship Wt. (lbs.)	Full Load Amps	Notes
1/4	1800	115/230	56C	T14C2JCR	\$330	DS-3FMP	1.15	11.5	31	5.0/2.5	25
1/3	3600	115/208-230	56C	EC01	\$332	DS-3FMP	1.15	11.4	22	6.6/3.2-3.3	24, 98
	1800	115/230	42CZ	T13C2P42ZCR	\$394	DS-3FMP	1.00	11.6	21	6.2/3.1	25
	1800	115/208-230	56C	T13CA2JCR	\$380	DS-3FMP	1.15	11.0	31	6.6/3.0-3.3	24
1/2	3600	115/208-230	56C	EC03	\$358	DS-3FMP	1.15	11.4	23	7.8/4.1-3.9	24, 98
	1800	100-120/200-240	56C	T12C2ZCR	\$592	DS-3FMP	1.25	12.2	25	6.3-5.6/3.1-2.8	18, 25, 98
	1800	115/208-230	56C	T12C2JCR	\$439	DS-3FMP	1.15	11.0	22	9.0/4.3-4.5	25
	1800	115/208-230	56C	T12CA2JCR	\$496	DS-3FMP	1.15	11.4	23	9.0/4.3-4.5	24
	1800	115/208-230	56C	T12CM2JCR	\$462	DS-3FMP	1.15	11.4	20	9.0/4.3-4.5	23
	1200	115/208-230	56C	T12C3JCR	\$828	DS-3FMP	1.15	11.4	22	10.4/5.1-5.2	25
3/4	3600	115/208-230	56C	EC06	\$448	DS-3FMP	1.15	11.9	26	10.0/5.2-5.0	24, 98, PF
	1800	100-120/200-240	56C	T34C2ZCR	\$699	DS-3FMP	1.25	12.4	32	9.2-8.4/4.6-4.2	18, 25, 98
	1800	115/208-230	56C	T34C2JCR	\$527	DS-3FMP	1.15	11.9	25	11.4/5.7-5.7	25
	1800	115/208-230	56C	T34CA2JCR	\$582	DS-3FMP	1.15	11.9	27	11.4/5.7-5.7	24
	1800	115/208-230	56C	T34CM2JCR	\$551	DS-3FMP	1.15	11.6	24	11.4/5.7-5.7	23
	1200	115/208-230	56C	T34C3JCR	\$932	DS-3FMP	1.15	13.4	28	10.8/5.4-5.3	18, 25

Note 18 Incorporates Run Capacitor
 Note 23 Manual Reset Thermal Overload Protector
 Note 24 Automatic Reset Thermal Overload Protector
 Note 25 Non-protected

Note 98 50/60 Hz Motor
 Note PF Pump and Fan Duty Only.
 Additional Pump Motor Offerings are Available on Pages 225-282



General Purpose Single Phase, Capacitor Start Totally Enclosed Fan Cooled (TEFC) C-Face



DRIVES

BRAKE MOTORS

GENERAL PURPOSE SINGLE PHASE

HVAC

WASH/DOWN

AGRICULTURE

COMMERCIAL PUMP MOTORS

CLOSE COUPLED PUMP MOTORS

FIRE PUMP MOTORS

POOL & SPA MOTORS

RESIDENTIAL WATER PUMP

ELEVATOR AND GATE & DOOR

HP	RPM	Voltage	Frame	Catalog Number	List	Discount Symbol	SF	"C" Dim. (inches)	Ship Wt. (lbs.)	Full Load Amps	Notes
1	3600	115/208-230	56C	T1CA1JCR	\$524	DS-3FMP	1.15	12.4	27	13.6/6.9-6.8	24
	1800	100-120/200-240	56C	T1C2ZCR	\$713	DS-3FMP	1.15	12.5	40	11.0-9.2/5.5-4.7	25, 98
	1800	115/208-230	143TC	T1C2J14CR	\$638	DS-3SP	1.15	13.1	30	14.0/6.9-7.0	25
	1800	115/208-230	143TC	T1CA2J14CR	\$677	DS-3SP	1.15	12.4	33	14.0/6.9-7.0	24
	1800	115/208-230	143TC	T1CM2J14CR	\$700	DS-3SP	1.15	12.4	30	14.0/6.9-7.0	23
	1800	115/208-230	56C	T1C2JCR	\$571	DS-3FMP	1.15	13.1	43	14.0/6.9-7.0	25
	1800	115/208-230	56C	T1CA2JCR	\$610	DS-3FMP	1.15	12.4	43	14.0/6.9-7.0	24
	1800	115-208/230	56C	T1CM2JCR	\$633	DS-3FMP	1.15	12.4	24	14.0/6.9-7.0	23
	1200	115/208-230	56C	T1C3JCR	\$1,011	DS-3FMP	1.15	13.9	44	12.6/6.6-6.3	25
1-1/2	3600	115/208-230	143TC	T32C1J14CR	\$637	DS-3SP	1.15	12.9	32	14.6/8.1-7.4	25
	3600	115/208-230	56C	T32CA1JCR	\$637	DS-3FMP	1.15	12.9	32	14.6/8.1-7.4	24
	1800	115/208-230	145TC	T32C2J14CR	\$723	DS-3SP	1.15	13.1	47	14.4/8.0-7.2	25
	1800	115/208-230	145TC	T32CA2J14CR	\$762	DS-3SP	1.15	13.9	47	14.4/8.0-7.2	24
	1800	115/208-230	145TC	T32CM2J14CR	\$786	DS-3SP	1.15	13.9	47	14.4/8.0-7.2	23
	1800	115/208-230	56C	T32C2JCR	\$650	DS-3FMP	1.15	13.6	31	14.4/8.0-7.2	25
	1800	115/208-230	56C	T32CA2JCR	\$689	DS-3FMP	1.15	13.9	31	14.4/8.0-7.2	24
	1800	115/208-230	56C	T32CM2JCR	\$712	DS-3FMP	1.15	13.9	31	14.4/8.0-7.2	23
2	3600	115/208-230	145TC	T2C1J14CR	\$813	DS-3SP	1.15	12.9	34	19.5/10.8-9.7	25
	3600	115/208-230	56C	EC13	\$815	DS-3FMP	1.15	12.9	37	9.6-9.0	24
	1800	115/208-230	145TC	T2C2J14CR	\$969	DS-3SP	1.15	13.9	35	18.9/10.3-9.4	25
	1800	115/208-230	145TC	T2CA2J14CR	\$1,008	DS-3SP	1.00	14.4	40	18.9/10.3-9.4	24
	1800	115/208-230	145TC	T2CM2J14CR	\$1,031	DS-3SP	1.00	14.0	40	18.9/10.3-9.4	23
	1800	115/208-230	56C	T2C2JCR	\$739	DS-3FMP	1.15	13.9	31	18.9/10.3-9.4	25
	1800	115/208-230	56C	T2CA2JCR	\$778	DS-3FMP	1.00	14.4	31	18.9/10.3-9.4	24
	1800	115/208-230	56C	T2CM2JCR	\$801	DS-3FMP	1.00	13.4	31	18.9/10.3-9.4	23

Note 23 Manual Reset Thermal Overload Protector
 Note 24 Automatic Reset Thermal Overload Protector

Note 25 Non-protected
 Note 98 50/60 Hz Motor

