

DATA SHEET



Three Phase Induction Motor - Squirrel Cage

Customer :																			
Product line	: Rolled Steel NEMA Premium Efficiency Three-Phase																		
Product code :	12630776																		
Catalog # :	00518ET3E184T-S																		
Frame : 182/4T Output : 5 HP (3.7 kW) Poles : 4 Frequency : 60 Hz Rated voltage : 208-230/460 V Rated current : 14.4-13.0/6.49 A L. R. Amperes : 100-90.9/45.4 A LRC : 7.0x(Code J) No load current : 5.94-6.89/3.44 A Rated speed : 1750 rpm Slip : 2.78 % Rated torque : 14.8 ft.lb Locked rotor torque : 220 % Breakdown torque : 300 % Insulation class : F Service factor : 1.15 Moment of inertia (J) : 0.3080 sq.ft.lb Design : B	Locked rotor time : 28s (cold) 16s (hot) Temperature rise : 80 K Duty cycle : Cont.(S1) Ambient temperature : -20°C to +40°C Altitude : 1000 m.a.s.l. Protection degree : IP55 Cooling method : IC411 - TEFC Mounting : F-1 Rotation ¹ : Both (CW and CCW) Noise level ² : 56.0 dB(A) Starting method : Direct On Line Approx. weight ³ : 75.7 lb																		
Output	25% 50% 75% 100%																		
Efficiency (%)	88.2 88.5 89.5 89.5																		
Power Factor	0.35 0.60 0.73 0.80																		
Foundation loads																			
Max. traction : 300 lb																			
Max. compression : 376 lb																			
	<table border="0" style="width:100%;"> <tr> <td></td> <td style="text-align: center;"><u>Drive end</u></td> <td style="text-align: center;"><u>Non drive end</u></td> </tr> <tr> <td>Bearing type :</td> <td style="text-align: center;">6206 ZZ</td> <td style="text-align: center;">6205 ZZ</td> </tr> <tr> <td>Sealing :</td> <td style="text-align: center;">V'Ring</td> <td style="text-align: center;">V'Ring</td> </tr> <tr> <td>Lubrication interval :</td> <td style="text-align: center;">-</td> <td style="text-align: center;">-</td> </tr> <tr> <td>Lubricant amount :</td> <td style="text-align: center;">-</td> <td style="text-align: center;">-</td> </tr> <tr> <td>Lubricant type :</td> <td colspan="2" style="text-align: center;">Mobil Polyrex EM</td> </tr> </table>		<u>Drive end</u>	<u>Non drive end</u>	Bearing type :	6206 ZZ	6205 ZZ	Sealing :	V'Ring	V'Ring	Lubrication interval :	-	-	Lubricant amount :	-	-	Lubricant type :	Mobil Polyrex EM	
	<u>Drive end</u>	<u>Non drive end</u>																	
Bearing type :	6206 ZZ	6205 ZZ																	
Sealing :	V'Ring	V'Ring																	
Lubrication interval :	-	-																	
Lubricant amount :	-	-																	
Lubricant type :	Mobil Polyrex EM																		
Notes																			
This revision replaces and cancel the previous one, which must be eliminated. (1) Looking the motor from the shaft end. (2) Measured at 1m and with tolerance of +3dB(A). (3) Approximate weight subject to changes after manufacturing process. (4) At 100% of full load.																			
These are average values based on tests with sinusoidal power supply, subject to the tolerances stipulated in NEMA MG-1.																			
Rev.	Changes Summary	Performed	Checked	Date															
Performed by																			
Checked by			Page	Revision															
Date	10/08/2018		1 / 5																

TORQUE AND CURRENT VS SPEED CURVE

Three Phase Induction Motor - Squirrel Cage

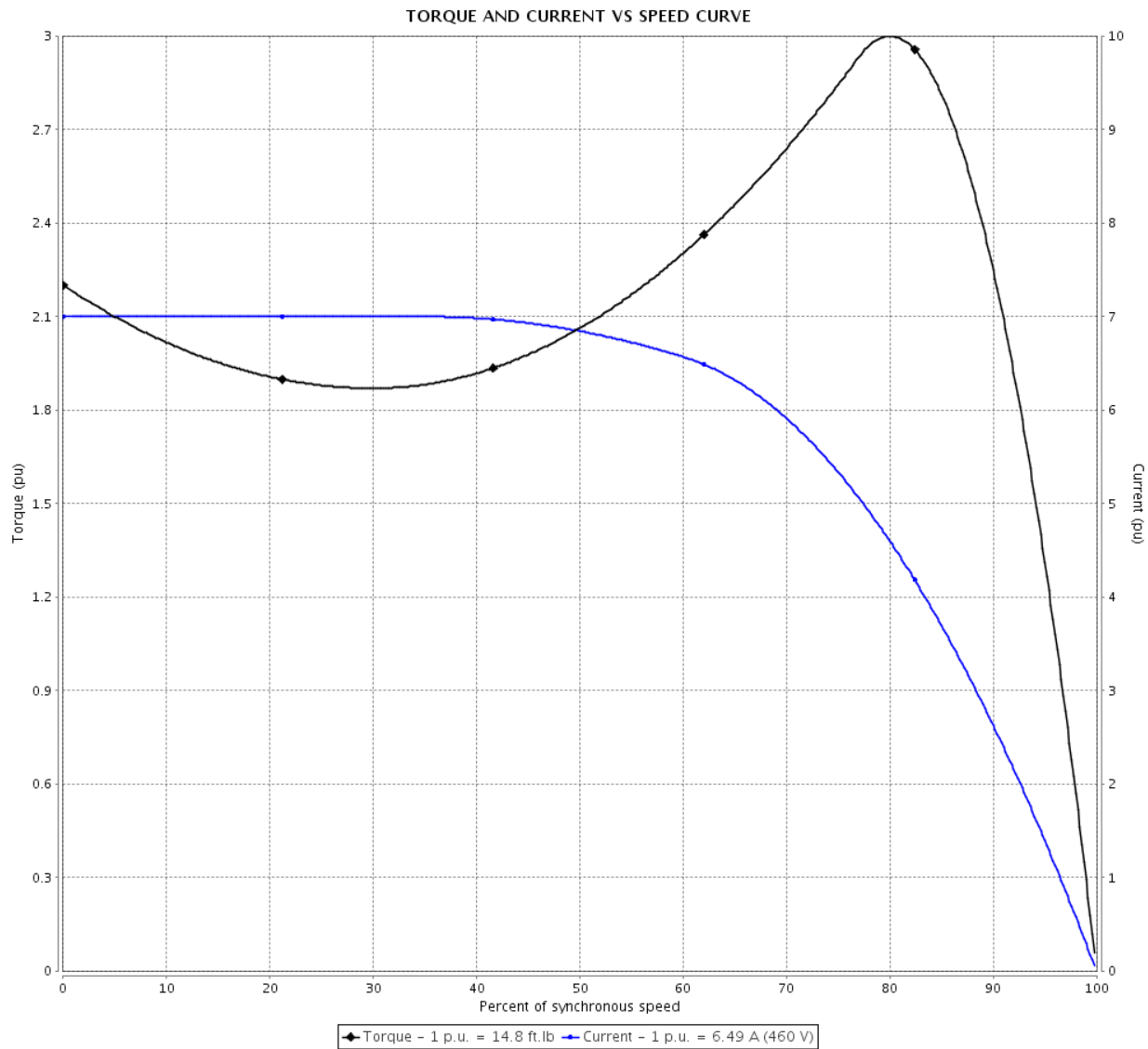


Customer :

Product line : Rolled Steel NEMA Premium Efficiency Three-Phase

Product code : 12630776

Catalog # : 00518ET3E184T-S



Performance : 208-230/460 V 60 Hz 4P

Rated current	: 14.4-13.0/6.49 A	Moment of inertia (J)	: 0.3080 sq.ft.lb
LRC	: 7.0	Duty cycle	: Cont.(S1)
Rated torque	: 14.8 ft.lb	Insulation class	: F
Locked rotor torque	: 220 %	Service factor	: 1.15
Breakdown torque	: 300 %	Temperature rise	: 80 K
Rated speed	: 1750 rpm	Design	: B

Locked rotor time : 28s (cold) 16s (hot)

Rev.	Changes Summary	Performed	Checked	Date
Performed by			Page 2 / 5	Revision
Checked by				
Date	10/08/2018			

LOAD PERFORMANCE CURVE

Three Phase Induction Motor - Squirrel Cage

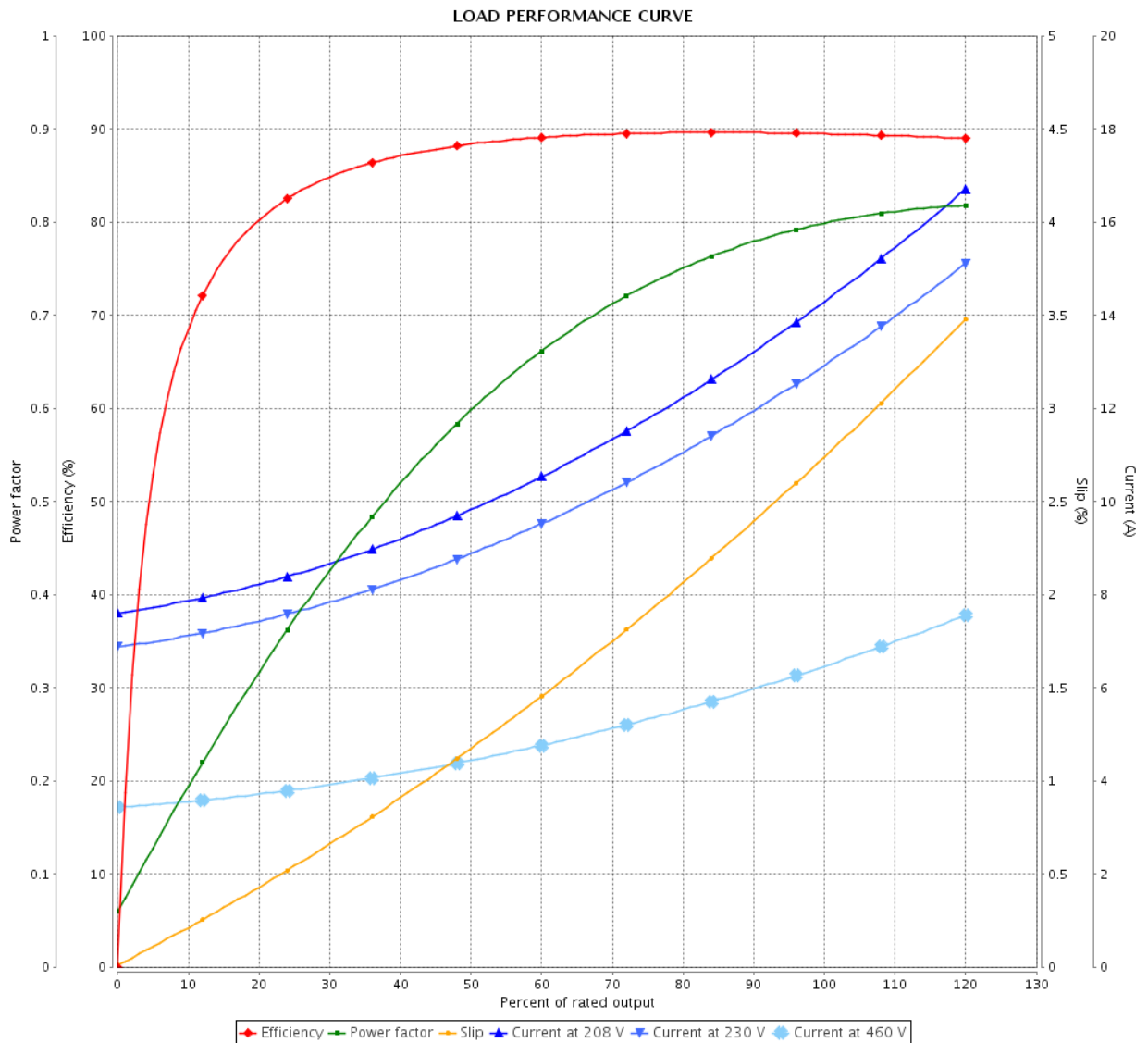


Customer :

Product line : Rolled Steel NEMA Premium Efficiency Three-Phase

Product code : 12630776

Catalog # : 00518ET3E184T-S



Performance : 208-230/460 V 60 Hz 4P

Rated current : 14.4-13.0/6.49 A
 LRC : 7.0
 Rated torque : 14.8 ft.lb
 Locked rotor torque : 220 %
 Breakdown torque : 300 %
 Rated speed : 1750 rpm

Moment of inertia (J) : 0.3080 sq.ft.lb
 Duty cycle : Cont.(S1)
 Insulation class : F
 Service factor : 1.15
 Temperature rise : 80 K
 Design : B

Rev.	Changes Summary	Performed	Checked	Date
Performed by		Page		Revision
Checked by		3 / 5		
Date	10/08/2018			

THERMAL LIMIT CURVE



Three Phase Induction Motor - Squirrel Cage

Customer :

Product line : Rolled Steel NEMA Premium
Efficiency Three-Phase

Product code : 12630776

Catalog # : 00518ET3E184T-S

Performance : 208-230/460 V 60 Hz 4P

Rated current : 14.4-13.0/6.49 A
LRC : 7.0
Rated torque : 14.8 ft.lb
Locked rotor torque : 220 %
Breakdown torque : 300 %
Rated speed : 1750 rpm

Moment of inertia (J) : 0.3080 sq.ft.lb
Duty cycle : Cont.(S1)
Insulation class : F
Service factor : 1.15
Temperature rise : 80 K
Design : B

Heating constant

Cooling constant

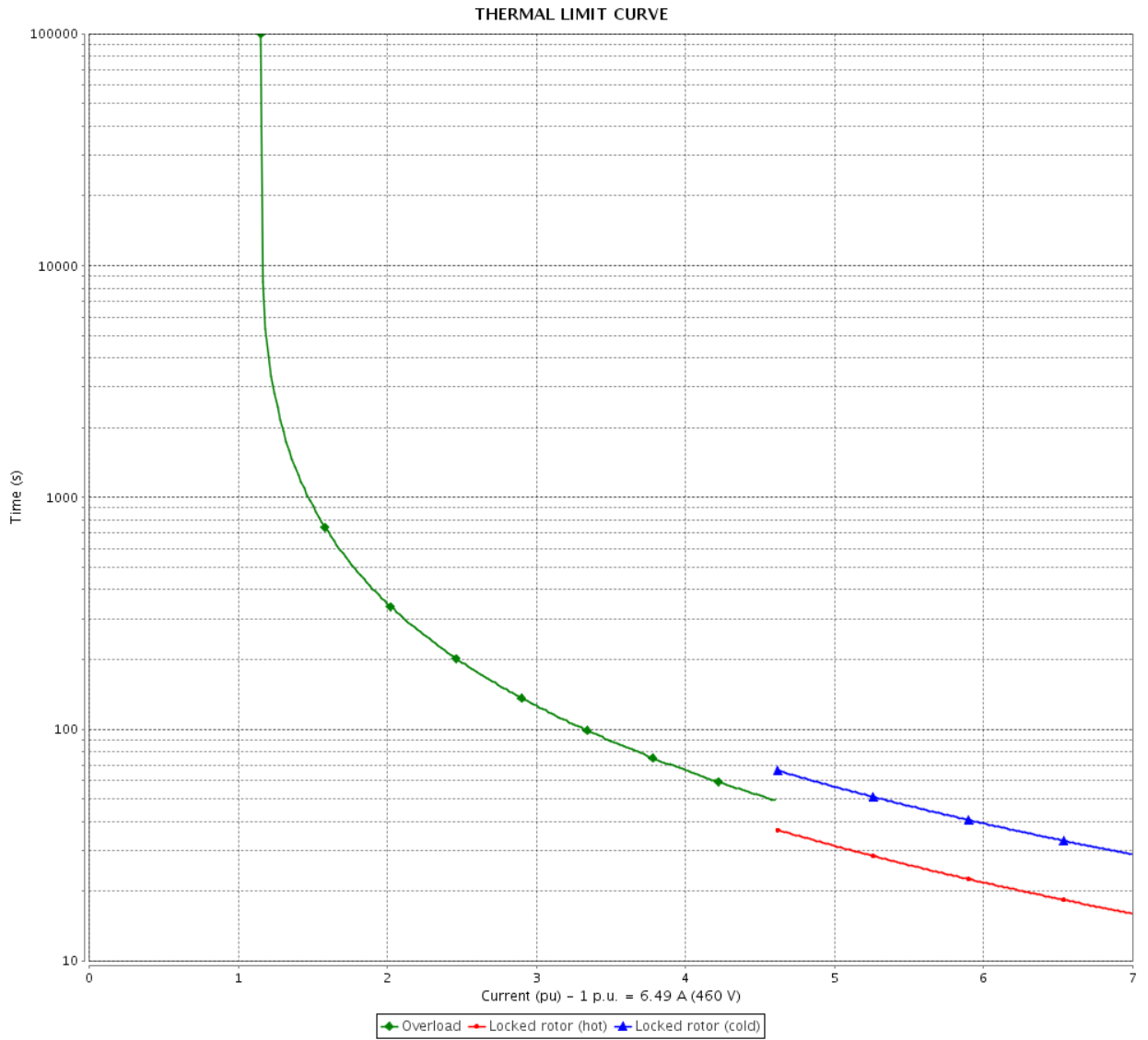
Rev.	Changes Summary	Performed	Checked	Date
Performed by				
Checked by			Page	Revision
Date	10/08/2018		4 / 5	

THERMAL LIMIT CURVE

Three Phase Induction Motor - Squirrel Cage



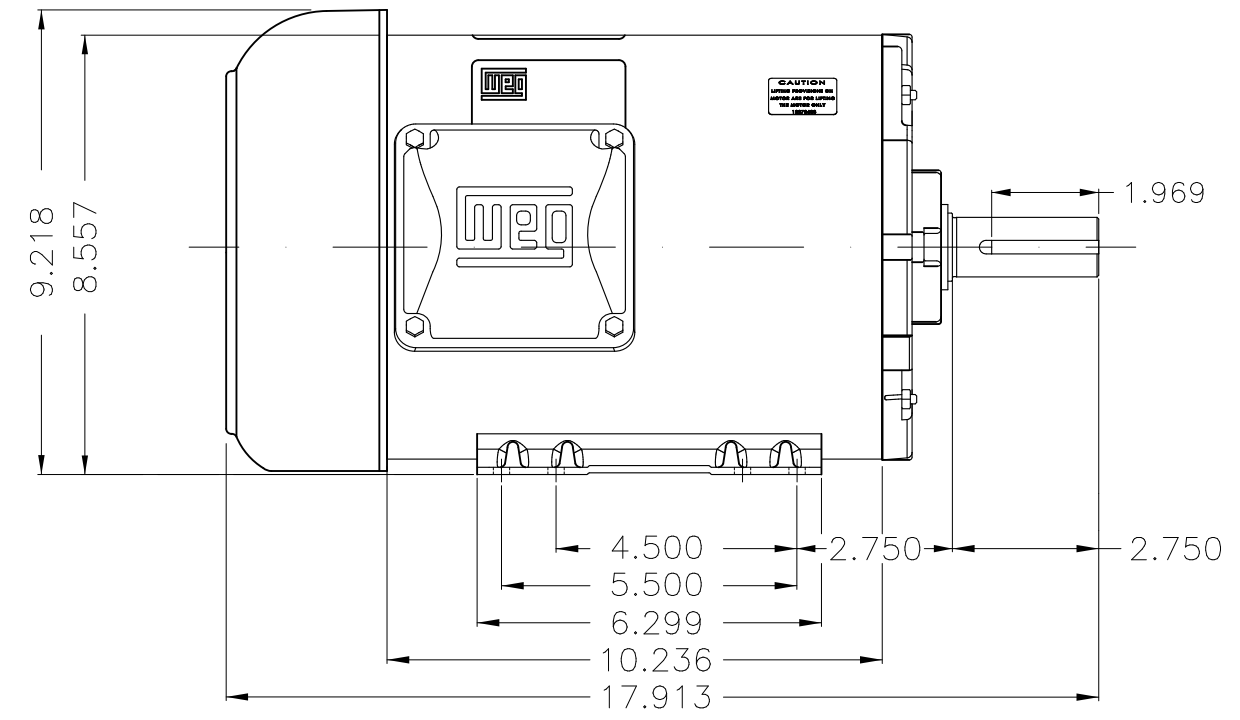
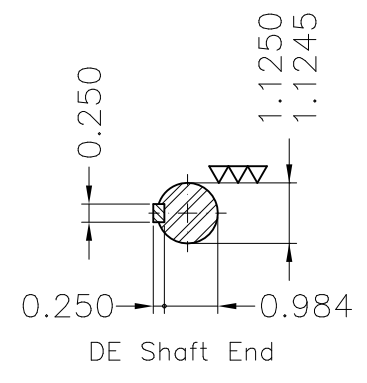
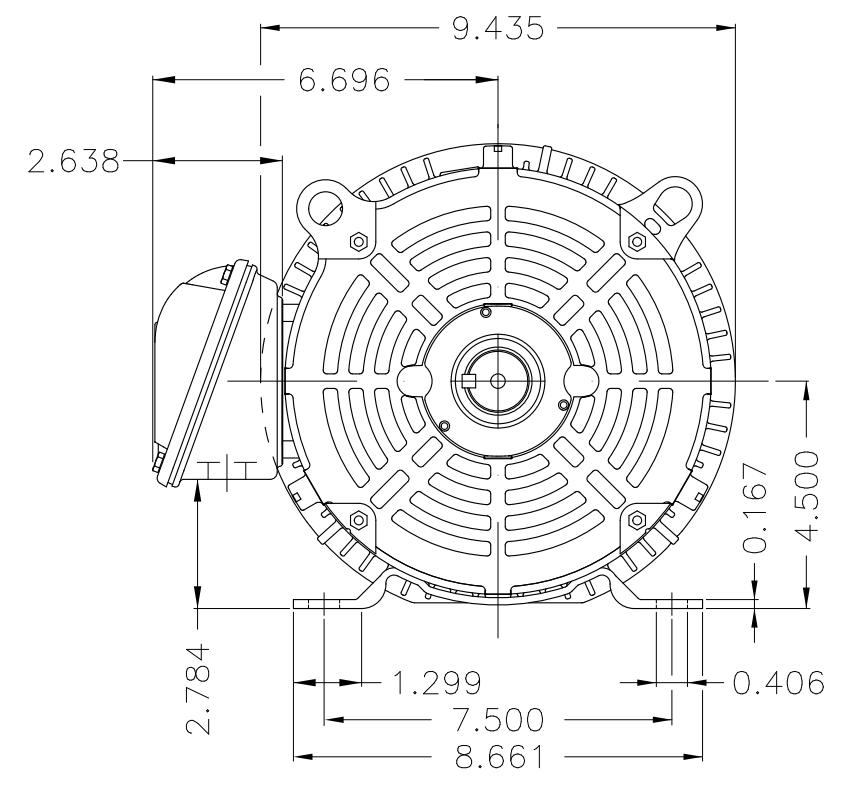
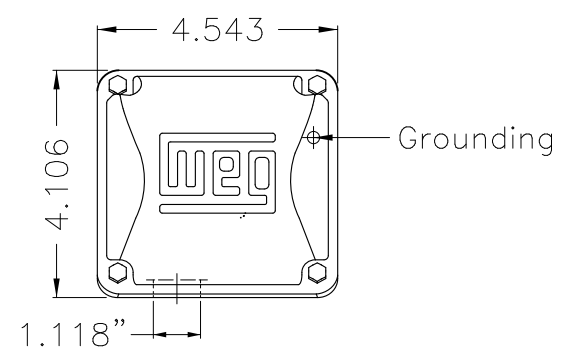
Customer : _____



Rev.	Changes Summary	Performed	Checked	Date
Performed by				
Checked by				
Date				
			Page	Revision
			5 / 5	

Dimensões em polegada
Dimensions in inches

THIS IS AN UPDATED REVISION, THE
PREVIOUS ONE MUST BE DISREGARDED.



Color Munsell N 1 matte black
Painting plan 207N
Mounting F-1/B3R(D)

ECM	LOC	SUMMARY OF MODIFICATIONS	EXECUTED	CHECKED	RELEASED	DATE	VER
EXECUTED	USERADMIN	THREE P. MOTOR CLOS ROLLED STEEL NEMA PREM					
CHECKED		FRAME 182/4T IP55 TEFC					
RELEASED		WEG code: 12630776					
REL DT	10.08.2018	WMO Jaragua do Sul	Product Engineering	SHEET	1 / 1		

5 HP 04 Poles 60Hz

A

