



# TORQUE AND CURRENT VS SPEED CURVE

Three Phase Induction Motor - Squirrel Cage

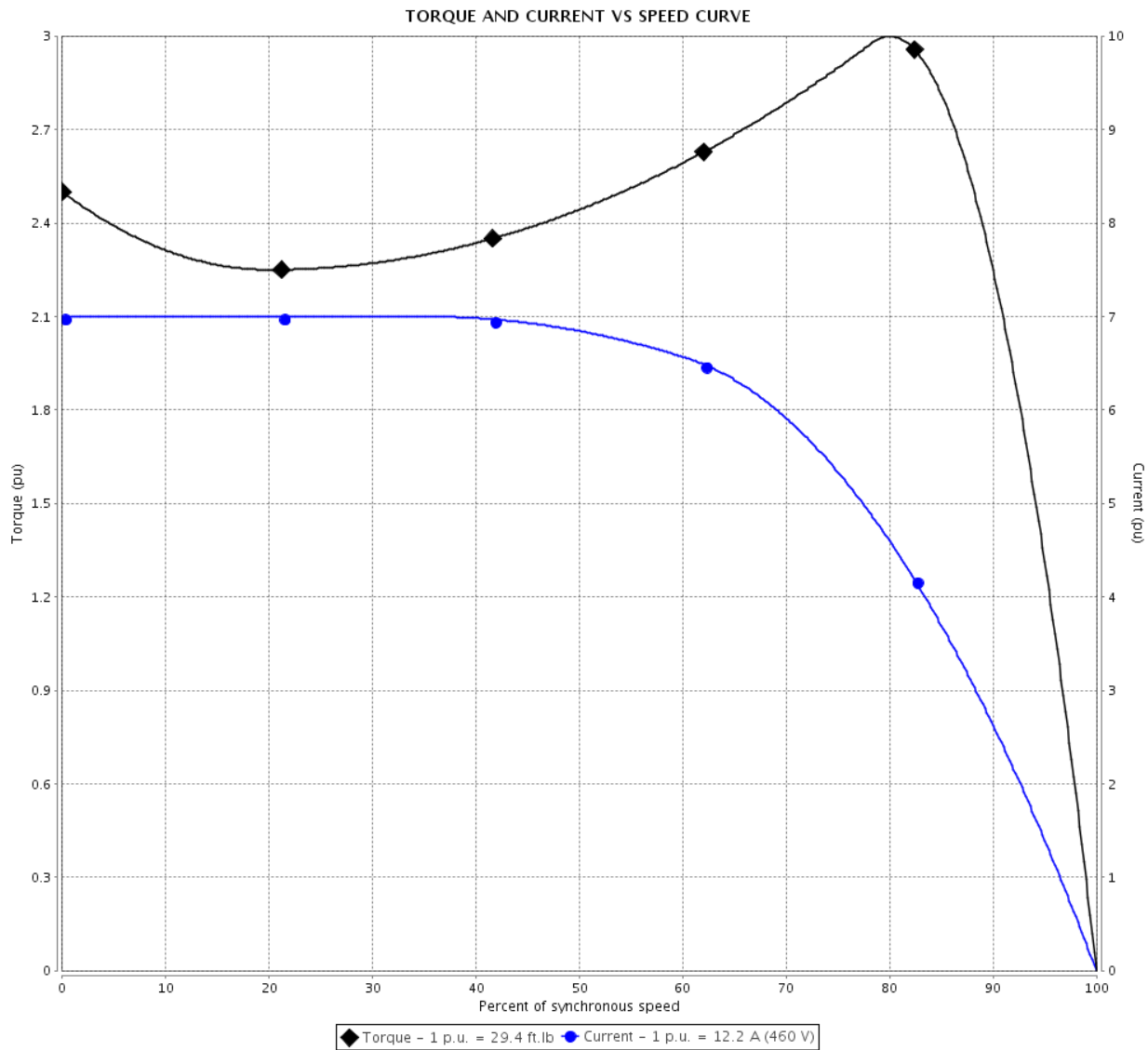


Customer :

Product line : Rolled Steel NEMA Premium Efficiency Three-Phase

Product code : 12630848

Catalog # : 01018ET3E215T-S



Performance : 208-230/460 V 60 Hz 4P

|                     |                    |                       |                 |
|---------------------|--------------------|-----------------------|-----------------|
| Rated current       | : 27.0-24.4/12.2 A | Moment of inertia (J) | : 1.07 sq.ft.lb |
| LRC                 | : 7.0              | Duty cycle            | : Cont.(S1)     |
| Rated torque        | : 29.4 ft.lb       | Insulation class      | : F             |
| Locked rotor torque | : 250 %            | Service factor        | : 1.15          |
| Breakdown torque    | : 300 %            | Temperature rise      | : 80 K          |
| Rated speed         | : 1760 rpm         | Design                | : B             |

Locked rotor time : 27s (cold) 15s (hot)

| Rev.         | Changes Summary | Performed | Checked       | Date     |
|--------------|-----------------|-----------|---------------|----------|
|              |                 |           |               |          |
| Performed by |                 |           | Page<br>2 / 6 | Revision |
| Checked by   |                 |           |               |          |
| Date         | 20/03/2019      |           |               |          |

# LOAD PERFORMANCE CURVE

## Three Phase Induction Motor - Squirrel Cage

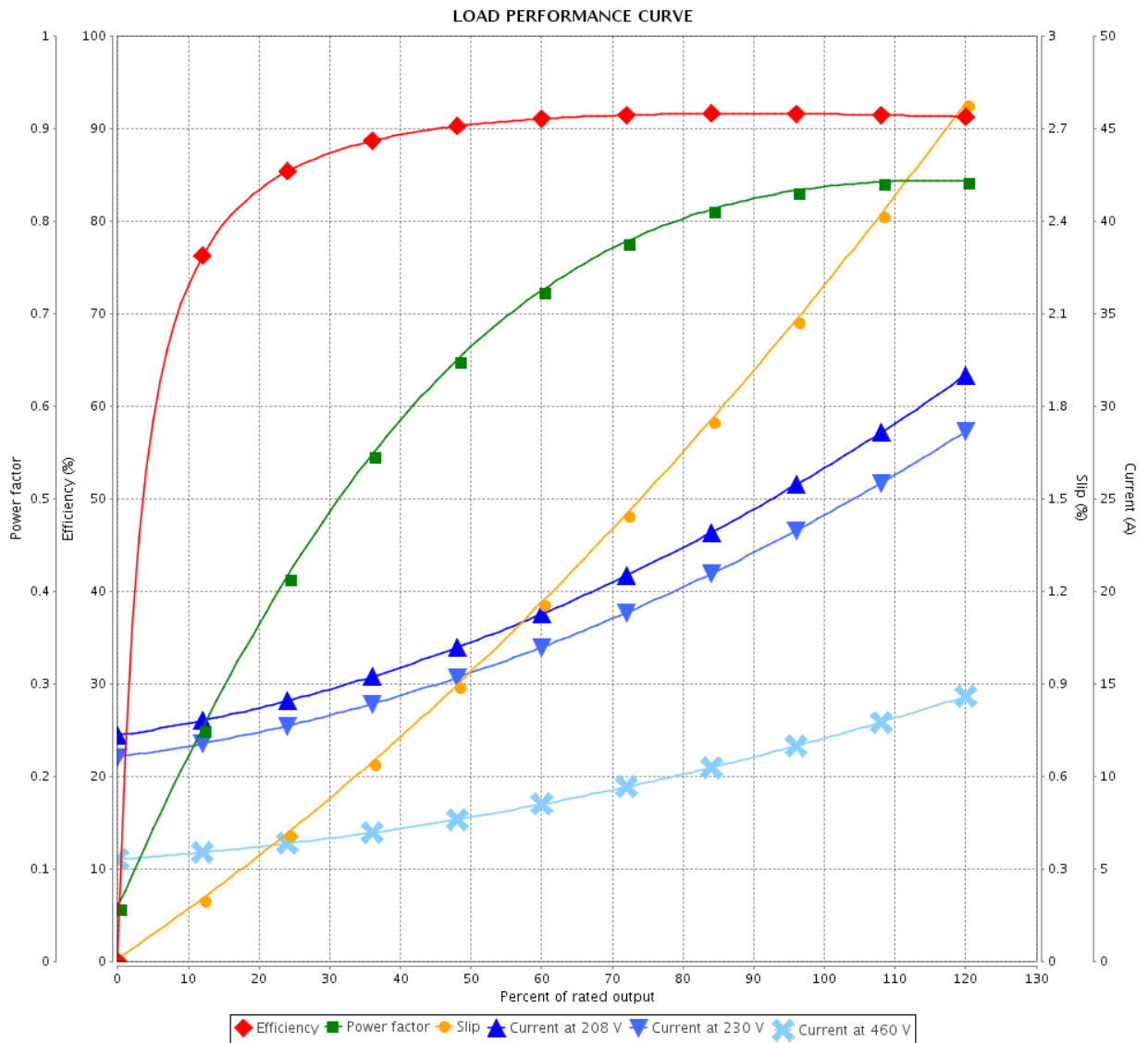


Customer : \_\_\_\_\_

Product line : Rolled Steel NEMA Premium Efficiency Three-Phase

Product code : 12630848

Catalog # : 01018ET3E215T-S



Performance : 208-230/460 V 60 Hz 4P

Rated current : 27.0-24.4/12.2 A  
 LRC : 7.0  
 Rated torque : 29.4 ft.lb  
 Locked rotor torque : 250 %  
 Breakdown torque : 300 %  
 Rated speed : 1760 rpm

Moment of inertia (J) : 1.07 sq.ft.lb  
 Duty cycle : Cont.(S1)  
 Insulation class : F  
 Service factor : 1.15  
 Temperature rise : 80 K  
 Design : B

| Rev.         | Changes Summary | Performed | Checked | Date     |
|--------------|-----------------|-----------|---------|----------|
|              |                 |           |         |          |
| Performed by |                 |           | Page    | Revision |
| Checked by   |                 |           |         |          |
| Date         |                 |           |         |          |
|              |                 |           | 3 / 6   |          |

# THERMAL LIMIT CURVE



## Three Phase Induction Motor - Squirrel Cage

Customer :

Product line : Rolled Steel NEMA Premium  
Efficiency Three-Phase

Product code : 12630848

Catalog # : 01018ET3E215T-S

Performance : 208-230/460 V 60 Hz 4P

Rated current : 27.0-24.4/12.2 A  
LRC : 7.0  
Rated torque : 29.4 ft.lb  
Locked rotor torque : 250 %  
Breakdown torque : 300 %  
Rated speed : 1760 rpm

Moment of inertia (J) : 1.07 sq.ft.lb  
Duty cycle : Cont.(S1)  
Insulation class : F  
Service factor : 1.15  
Temperature rise : 80 K  
Design : B

Heating constant

Cooling constant

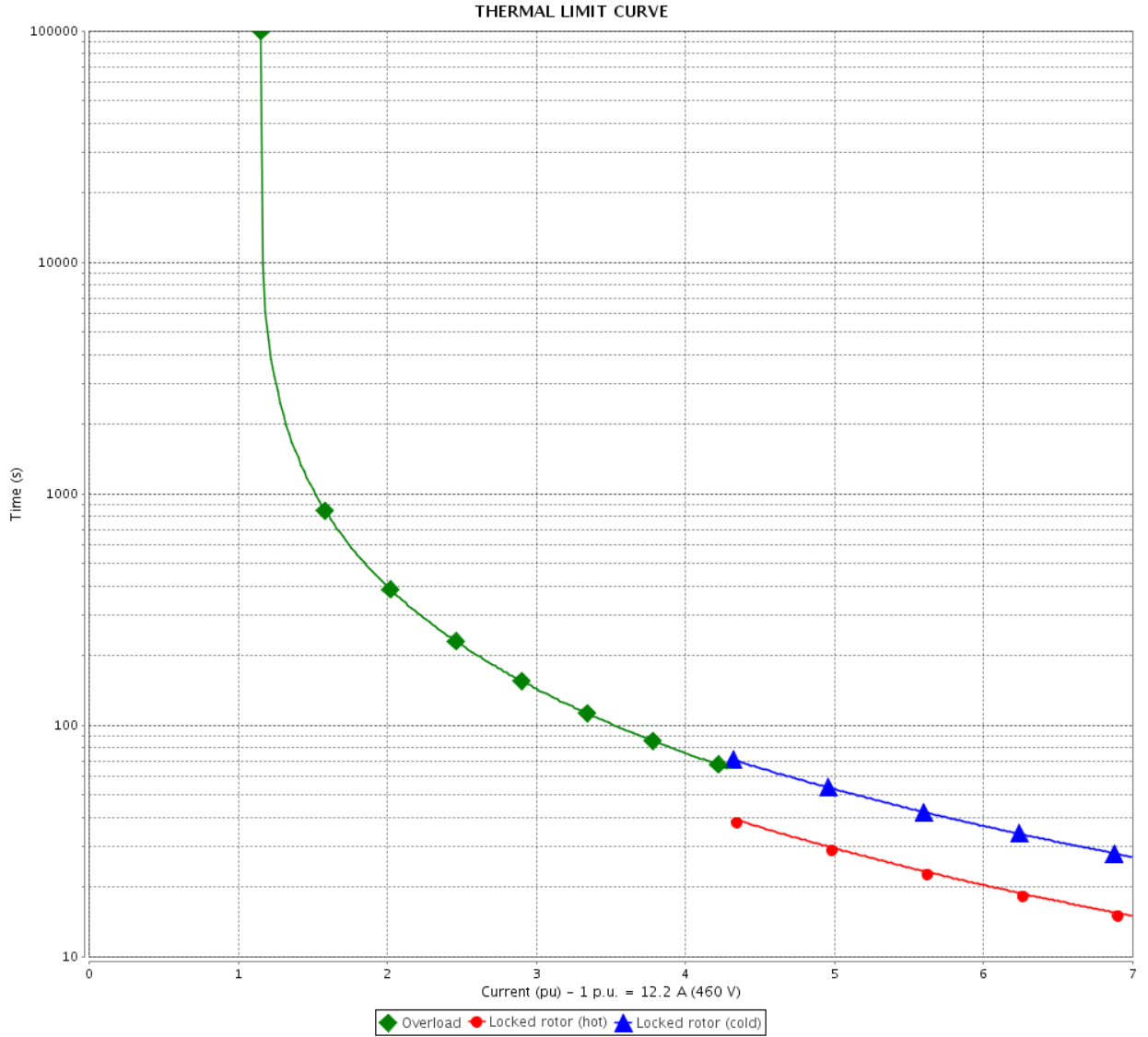
| Rev.         | Changes Summary | Performed | Checked       | Date     |
|--------------|-----------------|-----------|---------------|----------|
|              |                 |           |               |          |
| Performed by |                 |           | Page<br>4 / 6 | Revision |
| Checked by   |                 |           |               |          |
| Date         | 20/03/2019      |           |               |          |

# THERMAL LIMIT CURVE

Three Phase Induction Motor - Squirrel Cage



Customer : \_\_\_\_\_



| Rev.         | Changes Summary | Performed                   | Checked | Date |
|--------------|-----------------|-----------------------------|---------|------|
|              |                 |                             |         |      |
| Performed by |                 | Page      Revision<br>5 / 6 |         |      |
| Checked by   |                 |                             |         |      |
| Date         |                 |                             |         |      |

# VFD OPERATION CURVE

Three Phase Induction Motor - Squirrel Cage

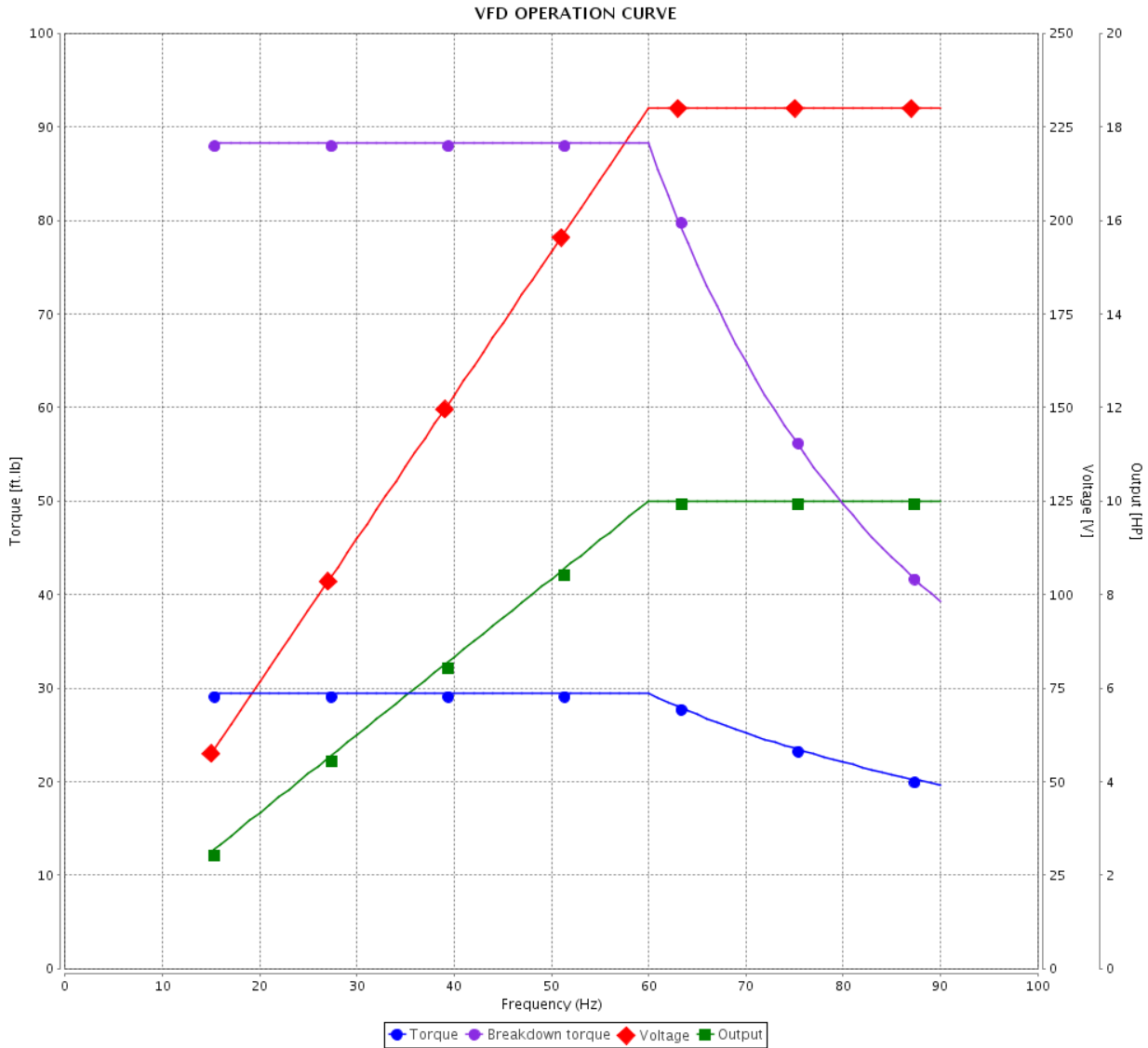


Customer :

Product line : Rolled Steel NEMA Premium Efficiency Three-Phase

Product code : 12630848

Catalog # : 01018ET3E215T-S



Performance : 208-230/460 V 60 Hz 4P

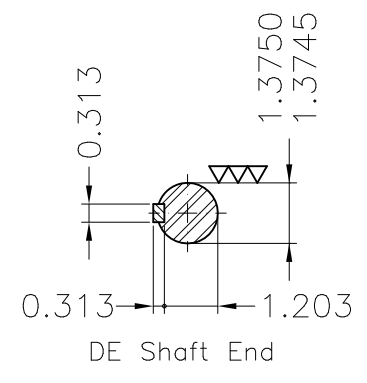
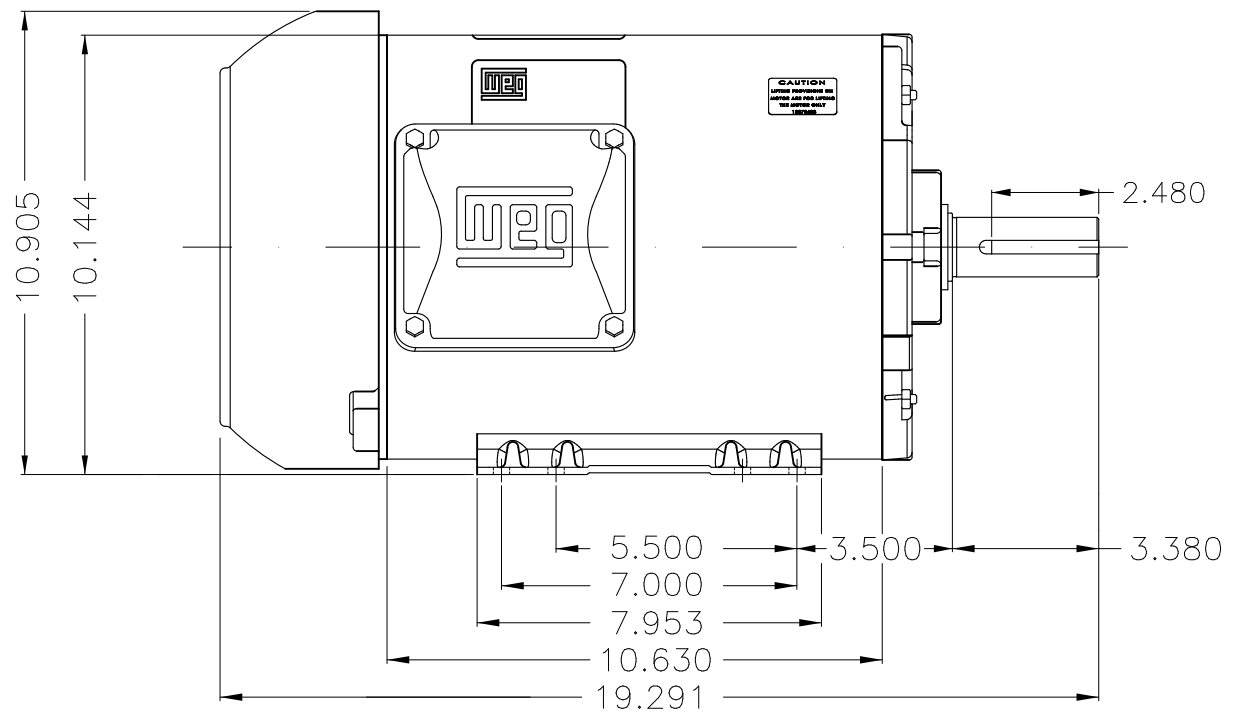
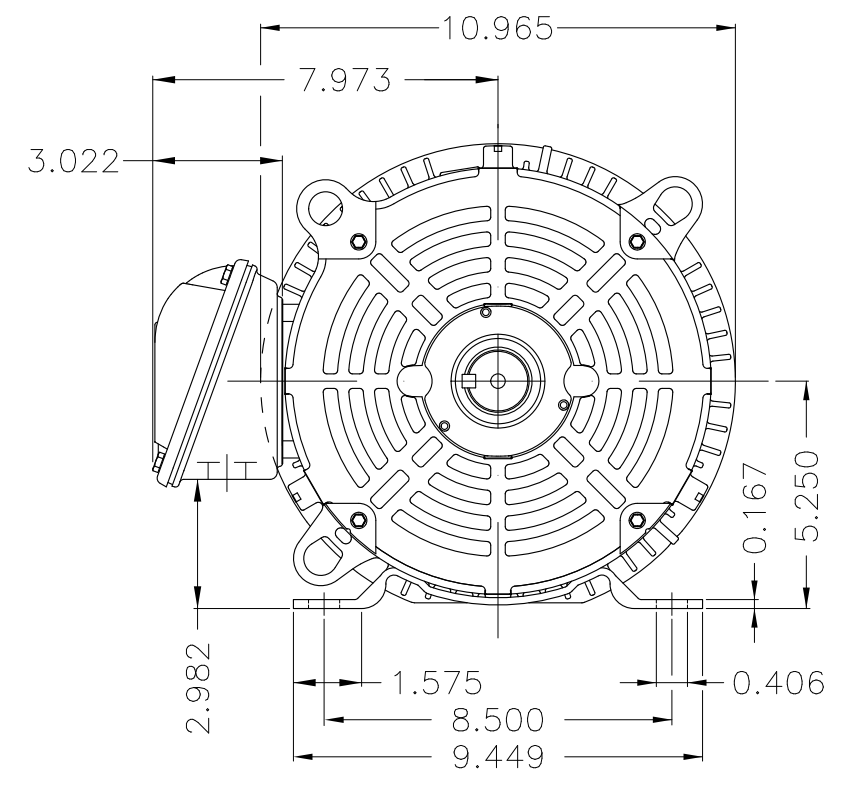
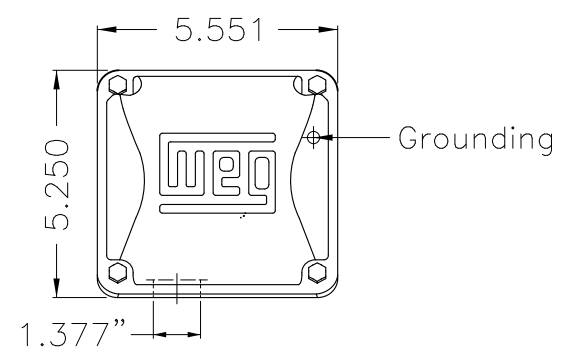
Rated current : 27.0-24.4/12.2 A  
 LRC : 7.0  
 Rated torque : 29.4 ft.lb  
 Locked rotor torque : 250 %  
 Breakdown torque : 300 %  
 Rated speed : 1760 rpm

Moment of inertia (J) : 1.07 sq.ft.lb  
 Duty cycle : Cont.(S1)  
 Insulation class : F  
 Service factor : 1.15  
 Temperature rise : 80 K  
 Design : B

| Rev.         | Changes Summary | Performed | Checked | Date     |
|--------------|-----------------|-----------|---------|----------|
|              |                 |           |         |          |
| Performed by |                 |           | Page    | Revision |
| Checked by   |                 |           |         |          |
| Date         |                 |           |         |          |

Dimensões em polegada  
Dimensions in inches

THIS IS AN UPDATED REVISION, THE  
PREVIOUS ONE MUST BE DISREGARDED.



Color Munsell N 1 matte black  
Painting plan 207N  
Mounting F-1/B3R(D)

| ECM      | LOC        | SUMMARY OF MODIFICATIONS                   | EXECUTED            | CHECKED | RELEASED | DATE | VER |
|----------|------------|--|---------------------|---------|----------|------|-----|
| EXECUTED | USERADMIN  | THREE P. MOTOR CLOS ROLLED STEEL NEMA PREM |                     |         |          |      |     |
| CHECKED  |            | FRAME 213/5T IP55 TEFC                     |                     |         |          |      |     |
| RELEASED |            | WEG code: 12630848                         |                     |         |          |      |     |
| REL DT   | 20.03.2019 | WMO Jaragua do Sul                         | Product Engineering | SHEET   | 1 / 1    |      |     |

10 HP 04 Poles 60Hz

A





**NEMA**  
**Premium**



3PT9  
C **UL** **US LISTED**  
FOR SAFE AREA



Energy Verified

MADE IN MEXICO

**MAT:12630848 CC029A**

For 60Hz: Class I, Zone 2, IIC

**W01.TE0IC0X0N**

Class I, Div.2, Gr. A,B,C,D - T3

**MODEL 01018ET3E215T-S**

Div 2 Inverter Duty (SF1.00)

**20MAR2019 S/N:**

**CT 2:1/VT 1000:1**

|             |                  |               |                   |                |           |           |
|-------------|------------------|---------------|-------------------|----------------|-----------|-----------|
| <b>PH 3</b> | <b>FR</b>        | <b>213/5T</b> | <b>HP(KW)</b>     | <b>10(7.5)</b> | <b>Hz</b> | <b>60</b> |
| <b>V</b>    | <b>230/460</b>   |               | <b>RPM</b>        | <b>1760</b>    |           |           |
| <b>A</b>    | <b>24.4/12.2</b> |               | <b>DUTY CONT.</b> |                |           |           |

|                      |                 |               |                 |               |              |             |
|----------------------|-----------------|---------------|-----------------|---------------|--------------|-------------|
| <b>SFA 28.1/14.0</b> | <b>INS CL F</b> | <b>AT 80K</b> | <b>AMB 40°C</b> | <b>CODE H</b> | <b>DES B</b> | <b>IP55</b> |
| <b>SF 1.15</b>       |                 |               |                 | <b>ENCL</b>   |              | <b>TEFC</b> |

**PF 0.84** **NEMA NOM.EFF. 91.7%**

**ALT 1000 m.a.s.l. USABLE @ 208V 27.0A SF1.00**

**ALTERNATE RATING: 7.5HP 50Hz 190-220/380-415V SF1.15**

**22.4-20.6/11.2-10.9A 1465RPM EFF 90.1% (IE3) IEC 60034-1**



**INTERCHANGE ANY TWO LINE WIRES TO REVERSE THE ROTATION**

**For safe area-Inverter duty For 60Hz use on VPWM 1000:1 VT, 4:1 CT**

**DE: 6208-ZZ ODE: 6206-ZZ MOBIL POLYREX EM**

**WARNING: Motor must be grounded in accordance with local and national electrical codes to prevent serious electrical shocks. Disconnect power source before servicing unit.**

**AVERTISSEMENT: Le moteur doit être mis à la terre conformément aux codes électriques locaux et nationaux afin d'éviter tout choc électrique grave. Déconnectez l'alimentation avant l'entretien de la machine.**

