

# DATA SHEET



## Single Phase Induction Motor - Squirrel Cage

Customer :																			
Product line : Rolled Steel Single-Phase	Product code : 13037126 Catalog # : .7518OT1B56-S																		
Frame : 56 Output : 0.75 HP (0.550 kW) Poles : 4 Frequency : 60 Hz Rated voltage : 115/208-230 V Rated current : 6.80/3.76-3.40 A L. R. Amperes : 54.4/30.1-27.2 A LRC : 8.0x(Code K) No load current : 2.60/1.12-1.30 A Rated speed : 1750 rpm Slip : 2.78 % Rated torque : 2.22 ft.lb Locked rotor torque : 260 % Breakdown torque : 250 % Insulation class : F Service factor : 1.25 Moment of inertia (J) : 0.0973 sq.ft.lb Design : A	Locked rotor time : 36s (cold) 20s (hot) Temperature rise : 80 K Duty cycle : Cont.(S1) Ambient temperature : -20°C to +40°C Altitude : 1000 m.a.s.l. Cooling method : IC01 - ODP Mounting : F-1 Rotation <sup>1</sup> : Both (CW and CCW) Noise level <sup>2</sup> : 52.0 dB(A) Starting method : Direct On Line Approx. weight <sup>3</sup> : 33.6 lb																		
<table border="1" style="width:100%; border-collapse: collapse;"> <tr> <td>Output</td> <td>25%</td> <td>50%</td> <td>75%</td> <td>100%</td> </tr> <tr> <td>Efficiency (%)</td> <td>71.4</td> <td>74.0</td> <td>79.0</td> <td>81.8</td> </tr> <tr> <td>Power Factor</td> <td>0.49</td> <td>0.74</td> <td>0.82</td> <td>0.86</td> </tr> </table>	Output	25%	50%	75%	100%	Efficiency (%)	71.4	74.0	79.0	81.8	Power Factor	0.49	0.74	0.82	0.86	Foundation loads Max. traction : 37 lb Max. compression : 71 lb			
Output	25%	50%	75%	100%															
Efficiency (%)	71.4	74.0	79.0	81.8															
Power Factor	0.49	0.74	0.82	0.86															
<table style="width:100%;"> <tr> <td></td> <td style="text-align:center;"><u>Drive end</u></td> <td style="text-align:center;"><u>Non drive end</u></td> </tr> <tr> <td>Bearing type :</td> <td style="text-align:center;">6203 ZZ</td> <td style="text-align:center;">6202 ZZ</td> </tr> <tr> <td>Sealing :</td> <td style="text-align:center;">Without Bearing Seal</td> <td style="text-align:center;">Without Bearing Seal</td> </tr> <tr> <td>Lubrication interval :</td> <td style="text-align:center;">-</td> <td style="text-align:center;">-</td> </tr> <tr> <td>Lubricant amount :</td> <td style="text-align:center;">-</td> <td style="text-align:center;">-</td> </tr> <tr> <td>Lubricant type :</td> <td colspan="2" style="text-align:center;">Mobil Polyrex EM</td> </tr> </table>			<u>Drive end</u>	<u>Non drive end</u>	Bearing type :	6203 ZZ	6202 ZZ	Sealing :	Without Bearing Seal	Without Bearing Seal	Lubrication interval :	-	-	Lubricant amount :	-	-	Lubricant type :	Mobil Polyrex EM	
	<u>Drive end</u>	<u>Non drive end</u>																	
Bearing type :	6203 ZZ	6202 ZZ																	
Sealing :	Without Bearing Seal	Without Bearing Seal																	
Lubrication interval :	-	-																	
Lubricant amount :	-	-																	
Lubricant type :	Mobil Polyrex EM																		
Notes																			
This revision replaces and cancel the previous one, which must be eliminated. (1) Looking the motor from the shaft end. (2) Measured at 1m and with tolerance of +3dB(A). (3) Approximate weight subject to changes after manufacturing process. (4) At 100% of full load.																			
These are average values based on tests with sinusoidal power supply, subject to the tolerances stipulated in NEMA MG-1.																			
Rev.	Changes Summary	Performed	Checked	Date															
Performed by																			
Checked by			Page	Revision															
Date	18/06/2019		1 / 2																

# LOAD PERFORMANCE CURVE

Single Phase Induction Motor - Squirrel Cage



Customer :

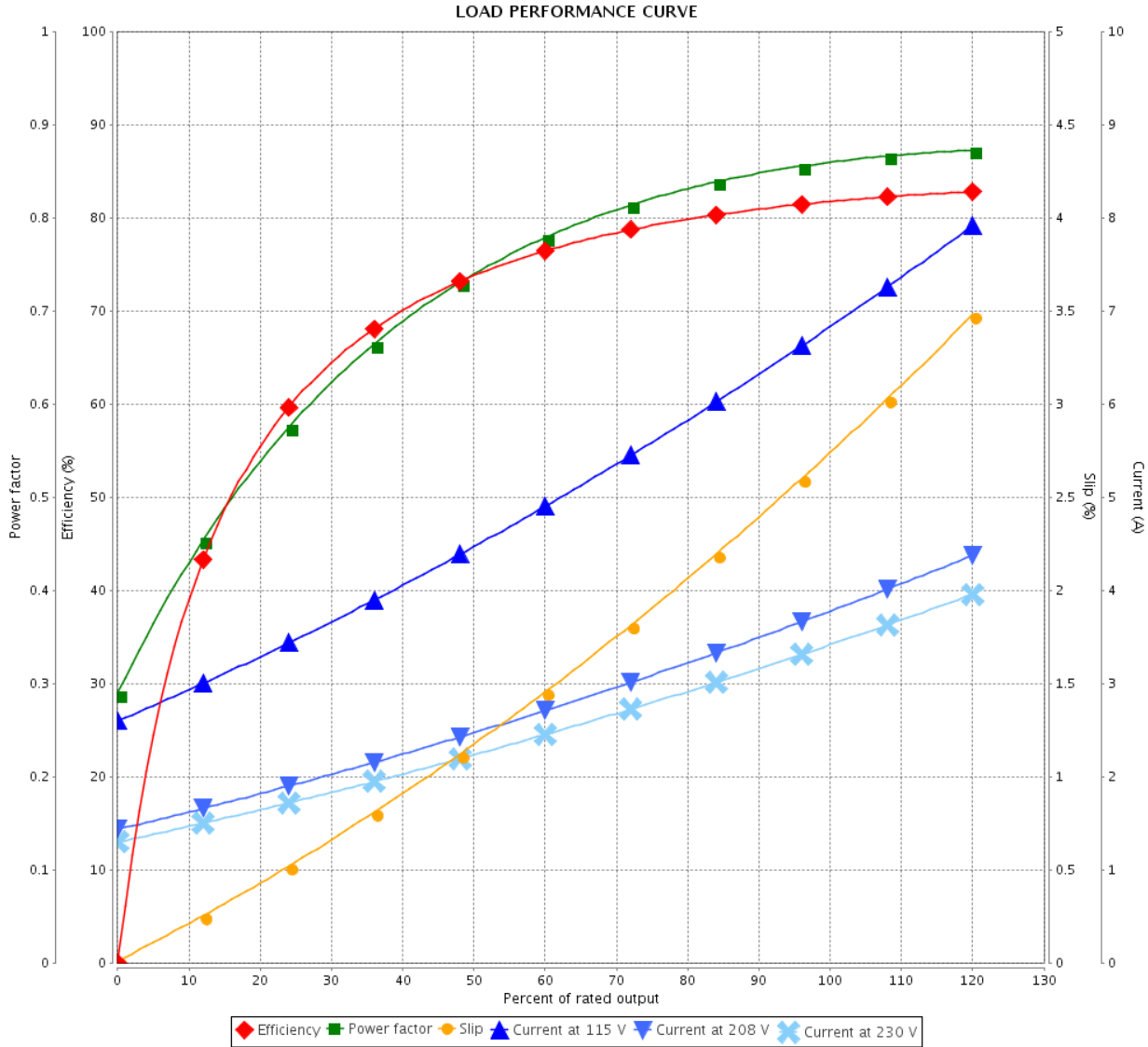
Product line : Rolled Steel Single-Phase

Product code :

13037126

Catalog # :

.7518OT1B56-S



Performance : 115/208-230 V 60 Hz 4P

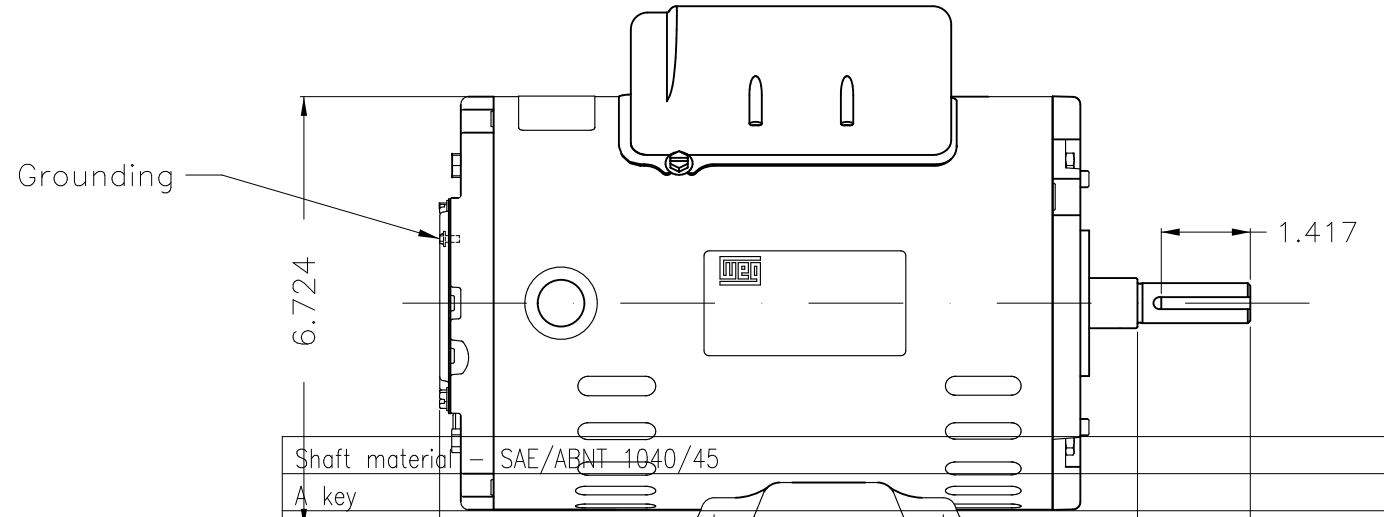
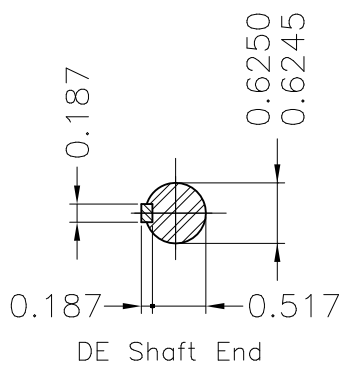
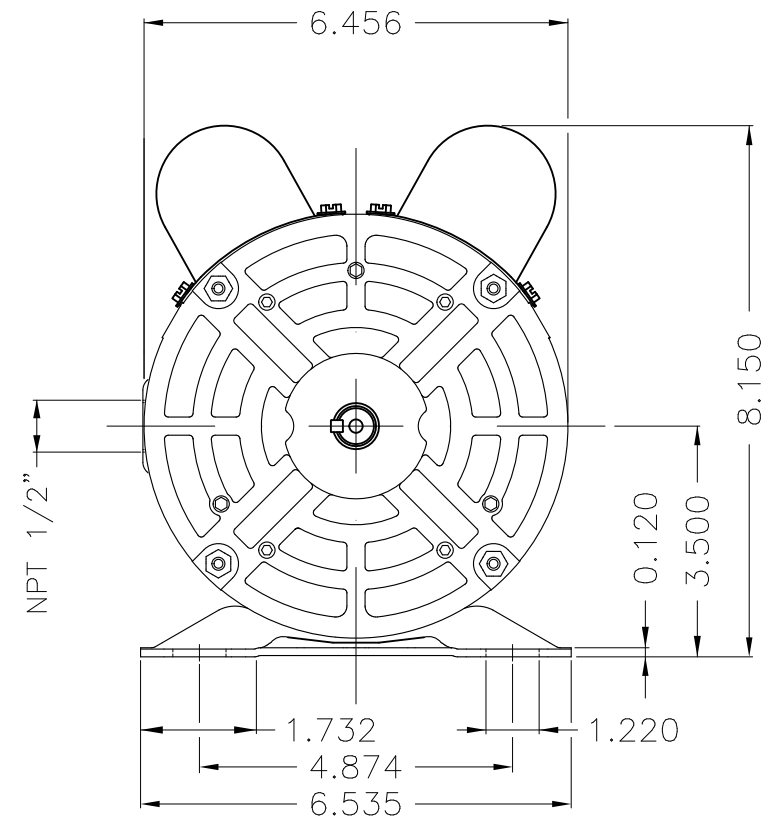
Rated current : 6.80/3.76-3.40 A  
 LRC : 8.0  
 Rated torque : 2.22 ft.lb  
 Locked rotor torque : 260 %  
 Breakdown torque : 250 %  
 Rated speed : 1750 rpm

Moment of inertia (J) : 0.0973 sq.ft.lb  
 Duty cycle : Cont.(S1)  
 Insulation class : F  
 Service factor :  
 Temperature rise : 80 K  
 Design : A

Rev.	Changes Summary	Performed	Checked	Date
Performed by			Page 2 / 2	Revision
Checked by				
Date	18/06/2019			

Dimensões em polegada  
Dimensions in inches

THIS IS AN UPDATED REVISION, THE  
PREVIOUS ONE MUST BE DISREGARDED.



- Shaft material - SAE/ABNT 1040/45
- A key
- NDE-bearing with double shield-ZZ
- Without drain hole
- Without alarm thermal protection 0.343
- Primer Only 3.000 2.750 1.874
- Carbon Steel screws 4.016
- Without switch off thermal protection 7.874
- Dipping impregnation - polyester 11.890
- Without Grease fitting
- Without bearing cap
- Without Space Heaters
- DE-bearing with double shield-ZZ
- Without fan
- Without bearing sealing
- Rotation CW and CCW
- Design A
- Without overload protector at bearing
- Class F insulation - 80K temperature rise
- Without terminal block
- Grease - Mobil Polyrex EM
- Without coating
- Service factor 1.25
- Mounting F-1/B3R(D)

ECM	LOC	SUMMARY OF MODIFICATIONS	EXECUTED	CHECKED	RELEASED	DATE	VER
EXECUTED	USERADMIN	SINGLE P. MOTOR OPEN ROLLED STEEL PREM EFF FRAME 56 ODP WEG code: 13037126					
CHECKED							
RELEASED							
REL DT	18.06.2019	WMO Jaragua do Sul	Product Engineering	SHEET	1 / 1		

0.75 HP 04 Poles 60Hz

