



Customer information packet

VEM31116

1HP, 1770RPM, 3PH, 60HZ, 56C, 3520M, OPEN, F1, N

Class - None

Division - Not Applicable

Specifications

Enclosure	OPEN
Frame	56C
Frame Material	Steel
Frequency	60.00 Hz
Haz Area Class and Group	None
Haz Area Division	Not Applicable
Motor Letter Type	Three Phase
Output @ Frequency	1.000 HP @ 60 HZ
Phase	3
Synchronous Speed @ Frequency	1800 RPM @ 60 HZ
Voltage @ Frequency	230.0 V @ 60 HZ 460.0 V @ 60 HZ
Agency Approvals	CURUSEEV
Ambient Temperature	40 °C
Auxillary Box	No Auxillary Box
Auxillary Box Lead Termination	None
Base Indicator	No Mounting
Bearing Grease Type	Polyrex EM (-20F +300F)
Blower	None
Current @ Voltage	3.260 A @ 230.0 V 3.200 A @ 208.0 V 1.630 A @ 460.0 V
Design Code	B
Drip Cover	Drip Cover
Duty Rating	CONT
Efficiency @ 100% Load	85.5 %
Electrically Isolated Bearing	Not Electrically Isolated
Feedback Device	NO FEEDBACK
Front Shaft Indicator	None
Heater Indicator	No Heater
High Voltage Full Load Amps	1.6 a
Insulation Class	F

Part detail

Revision	K
Type	AC
Mech. spec.	35E4017
Base	
Status	PRD/A
Elec. spec.	35WGG004
Layout	35LYE4017
Eff. date	06-07-2024
CD Diagram	CD0005
Poles	04
Leads	9#18,0# Y
Proprietary	False
Created date	01-10-2022

Inverter Code	Inverter Ready
KVA Code	N
Lifting Lugs	No Lifting Lugs
Locked Bearing Indicator	Locked Bearing
Motor Lead Quantity/Wire Size	9 @ 18 AWG
Motor Lead Termination	Flying Leads
Motor Standards	NEMA
Motor Type	3520M
Mounting Arrangement	F1
Number of Poles	4
Overall Length	12.22 IN
Power Factor	67
Product Family	General Purpose
Pulley End Bearing Type	Ball
Pulley Face Code	C-Face
Pulley Shaft Indicator	Standard
Rodent Screen	None
Service Factor	1.15
Shaft Diameter	0.625 IN
Shaft Ground Indicator	No Shaft Grounding
Shaft Rotation	Reversible
Shaft Slinger Indicator	No Slinger
Speed	1760 rpm
Speed Code	Single Speed
Starting Method	Direct on line
Thermal Device - Bearing	None
Thermal Device - Winding	None
Vibration Sensor Indicator	No Vibration Sensor
Winding Thermal 1	None
Winding Thermal 2	None

Nameplate

NP3155LUA										
CAT.NO.	VEM31116									
SPEC.	35E4017G004G1									
HP	1									
VOLTS	230/460									
AMPS	3.26/1.63									
RPM	1760									
FRAME	56C		HZ	60		PH	3			
SF	1.15	CODE	N	DES	B	CLASS	F			
F.L. AVG. EFF.	85.5	PF	67							
RATING	40C AMB-CONT									
CC										
DE	6205		ODE	6203						
ENCL	OPEN	SN								
USABLE AT	50HZ 1HP 190/380V 3.6/1.8A							SF1.0		

AC Induction Motor Performance Data

Record # 86927

Typical performance - not guaranteed values

Winding: 35WGG004-R007		Type: 3520M		Enclosure: OPEN	
Nameplate Data			460 V, 60 Hz: High Voltage Connection		
Rated Output (HP)	1	Full Load Torque	2.97 LB-FT		
Volts	230/460	Start Configuration	direct on line		
Full Load Amps	3.26/1.63	Breakdown Torque	13.68 LB-FT		
R.P.M.	1760	Pull-up Torque	7.85 LB-FT		
Hz	60 Phase	3	Locked-rotor Torque	9.01 LB-FT	
NEMA Design Code	B KVA Code	N	Starting Current	14.13 A	
Service Factor (S.F.)	1.15	No-load Current	1.08 A		
NEMA Nom. Eff.	85.5 Power Factor	67	Line-line Res. @ 25°C	16.9 Ω	
Rating - Duty	40C AMB-CONT	Temp. Rise @ Rated Load	24°C		
S.F. Amps	3.52/1.76	Temp. Rise @ S.F. Load	27°C		
		Locked-rotor Power Factor	61.5		
		Rotor inertia	0.144 lb-ft ²		

Load Characteristics 460 V, 60 Hz, 1 HP

% of Rated Load	25	50	75	100	125	150	S.F.
Power Factor	30	47	60	69	76	79	73
Efficiency	72.1	81.7	84.7	85.7	85.5	84.7	85.6
Speed	1791	1784	1776	1768	1759	1750	1763
Line amperes	1.11	1.22	1.38	1.59	1.82	2.09	1.73

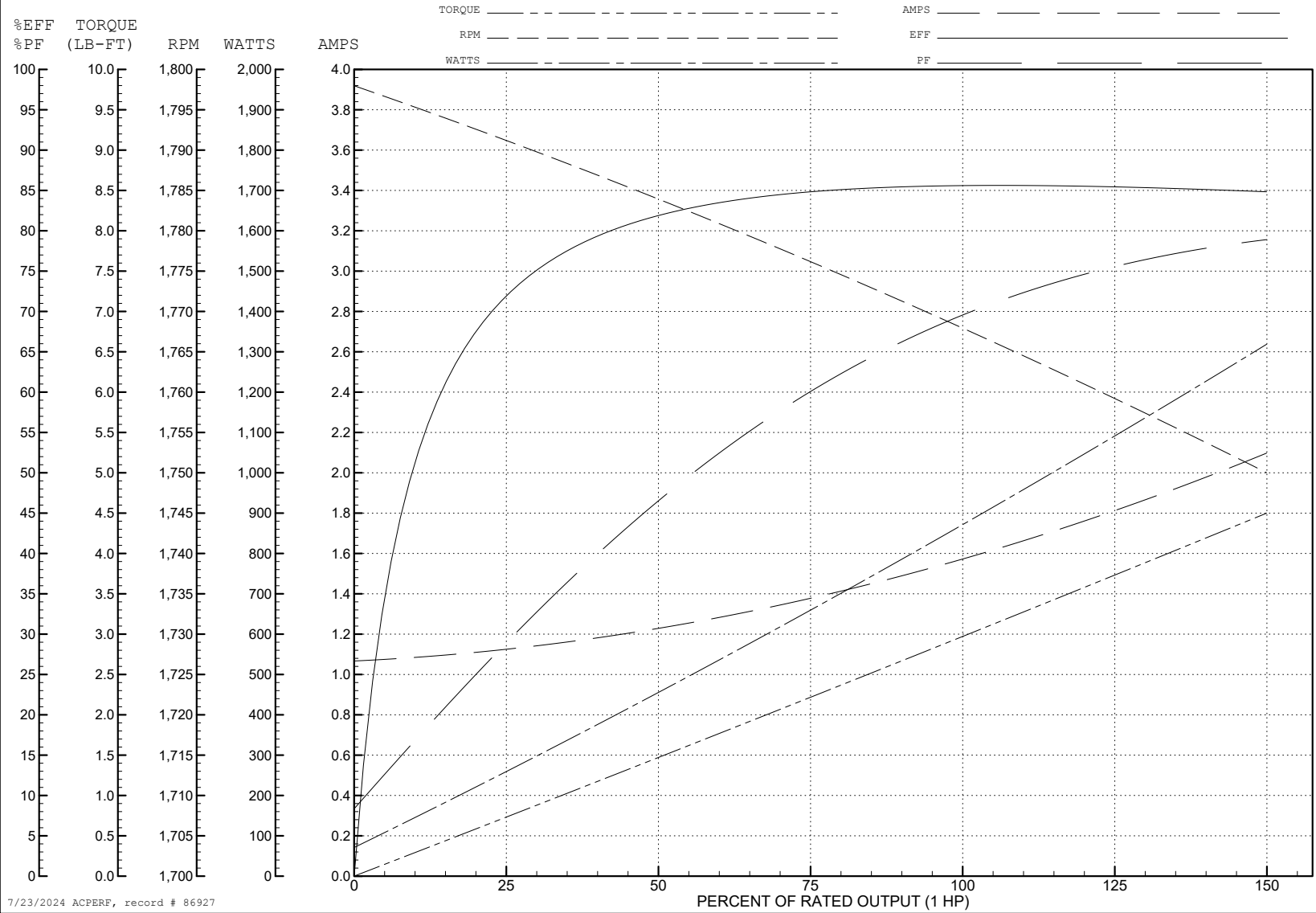
ABB Motors and Mechanical Inc.

WINDING # 35WGG004

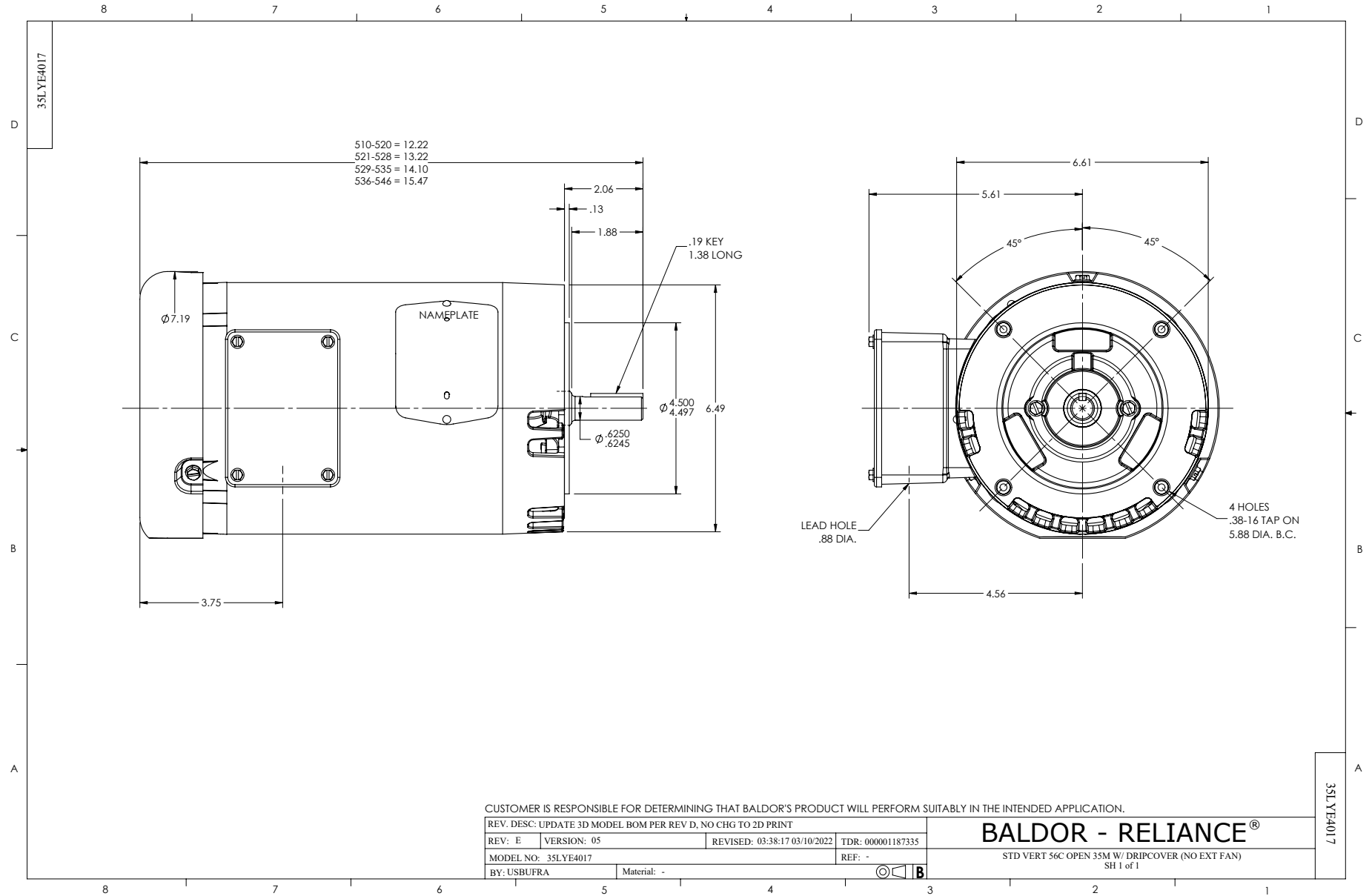
Typical performance - not guaranteed values.

1 HP 3 PH 60 HZ 1760 RPM 460 V 3520M

TORQUES (LB-FT): PO=13.68 PU=7.85 LR=9.01 LRA=14.13



7/23/2024 ACPERF, record # 86927



CD0005



LOW VOLTAGE
(2Y)



LINE

HIGH VOLTAGE
(1Y)



LINE

NOTES:

1. INTERCHANGE ANY TWO LINE LEADS TO REVERSE ROTATION.
2. OPTIONAL THERMOSTATS ARE PROVIDED WHEN SPECIFIED.
3. ACTUAL NUMBER OF INTERNAL PARALLEL CIRCUITS MAY BE A MULTIPLE OF THOSE SHOWN ABOVE.
4. LEAD COLORS ARE OPTIONAL. LEADS MUST ALWAYS BE NUMBERED AS SHOWN.

CD0005

REV. DESC: REVISE TO SHOW OPTIONAL COLORS			
REV. LTR: E	BY: JLP	REVISED: 01/19/99 10:15	TDR: 0171435
S00000		FILE: AAA00005140	MDL: -
		MTL: -	

BALDOR ELECTRIC Co.

3PH, DV, 9 LEADS