

DATA SHEET

Three Phase Induction Motor - Squirrel Cage



Customer :					
Product line : Rolled Steel Three-Phase		Product code : 12809667			
		Catalog # : 00158OT3E56-S			
Frame : 56H Output : 1.5 HP (1.1 kW) Poles : 4 Frequency : 60 Hz Rated voltage : 208-230/460 V Rated current : 4.64-4.20/2.10 A L. R. Amperes : 40.9-37.0/18.5 A LRC : 8.8x(Code L) No load current : 2.24-2.60/1.30 A Rated speed : 1760 rpm Slip : 2.22 % Rated torque : 0.610 kgfm Locked rotor torque : 290 % Breakdown torque : 350 % Insulation class : F Service factor : 1.15 Moment of inertia (J) : 0.0055 kgm ² Design : A		Locked rotor time : 25s (cold) 14s (hot) Temperature rise : 80 K Duty cycle : Cont.(S1) Ambient temperature : -20°C to +40°C Altitude : 1000 m.a.s.l. Cooling method : IC01 - ODP Mounting : F-1 Rotation ¹ : Both (CW and CCW) Noise level ² : 52.0 dB(A) Starting method : Direct On Line Approx. weight ³ : 17.1 kg			
Output	25%	50%	75%	100%	
Efficiency (%)	82.9	84.0	85.5	86.5	
Power Factor	0.30	0.53	0.66	0.76	
Foundation loads					
Max. traction : 73 kgf					
Max. compression : 90 kgf					
		<u>Drive end</u>	<u>Non drive end</u>		
Bearing type	:	6204 ZZ	6202 ZZ		
Sealing	:	Without Bearing Seal	Without Bearing Seal		
Lubrication interval	:	-	-		
Lubricant amount	:	-	-		
Lubricant type	:	Mobil Polyrex EM			
Notes					
This revision replaces and cancel the previous one, which must be eliminated. (1) Looking the motor from the shaft end. (2) Measured at 1m and with tolerance of +3dB(A). (3) Approximate weight subject to changes after manufacturing process. (4) At 100% of full load.			These are average values based on tests with sinusoidal power supply, subject to the tolerances stipulated in NEMA MG-1.		
Rev.	Changes Summary		Performed	Checked	Date
Performed by					
Checked by				Page	Revision
Date	13/02/2019			1 / 5	

TORQUE AND CURRENT VS SPEED CURVE

Three Phase Induction Motor - Squirrel Cage



Customer :

Product line : Rolled Steel Three-Phase

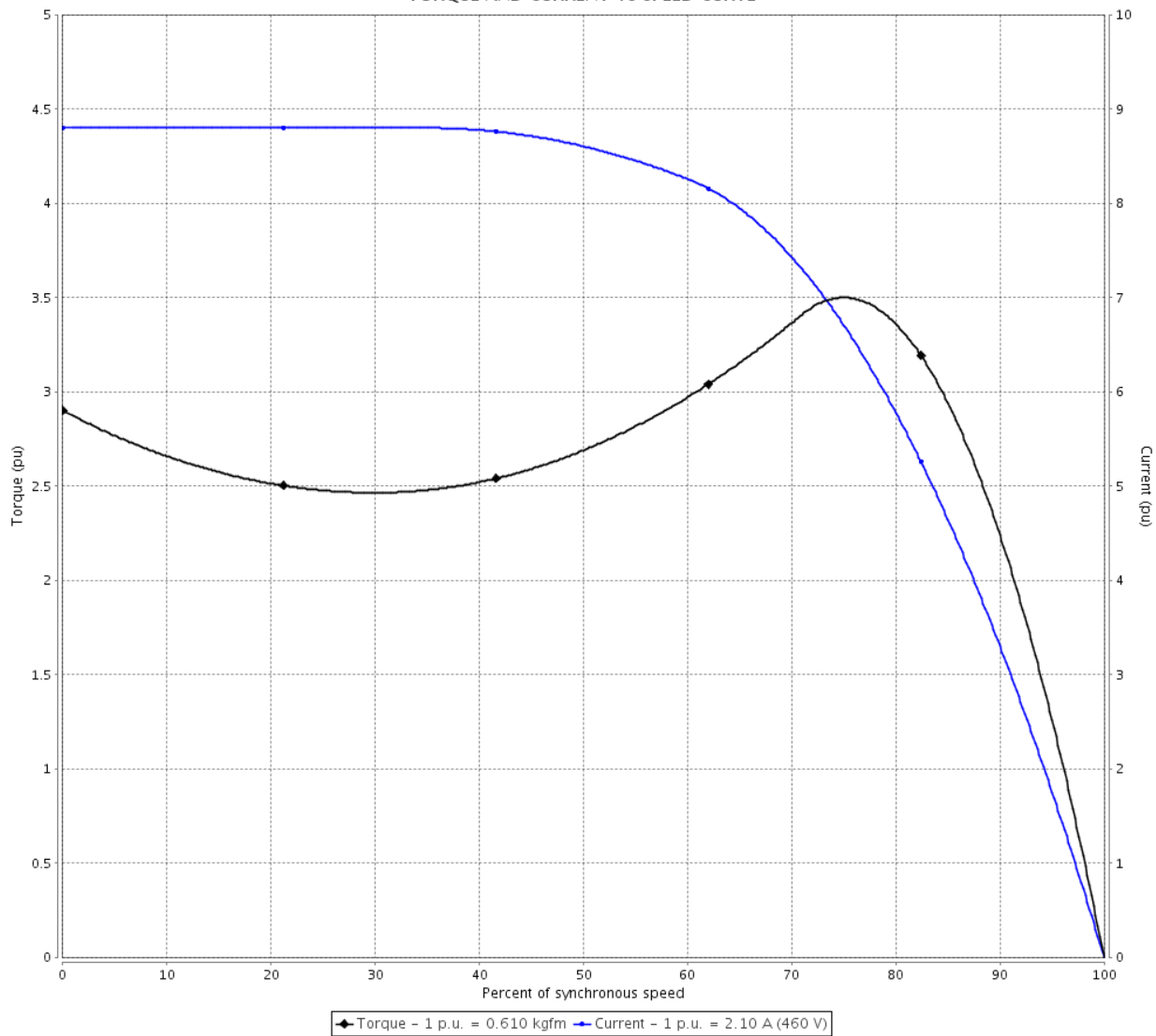
Product code :

12809667

Catalog # :

00158OT3E56-S

TORQUE AND CURRENT VS SPEED CURVE



Performance : 208-230/460 V 60 Hz 4P

Rated current	: 4.64-4.20/2.10 A	Moment of inertia (J)	: 0.0055 kgm ²
LRC	: 8.8	Duty cycle	: Cont.(S1)
Rated torque	: 0.610 kgfm	Insulation class	: F
Locked rotor torque	: 290 %	Service factor	:
Breakdown torque	: 350 %	Temperature rise	: 80 K
Rated speed	: 1760 rpm	Design	: A

Locked rotor time : 25s (cold) 14s (hot)

Rev.	Changes Summary	Performed	Checked	Date
Performed by			Page 2 / 5	Revision
Checked by				
Date	13/02/2019			

LOAD PERFORMANCE CURVE

Three Phase Induction Motor - Squirrel Cage



Customer : _____

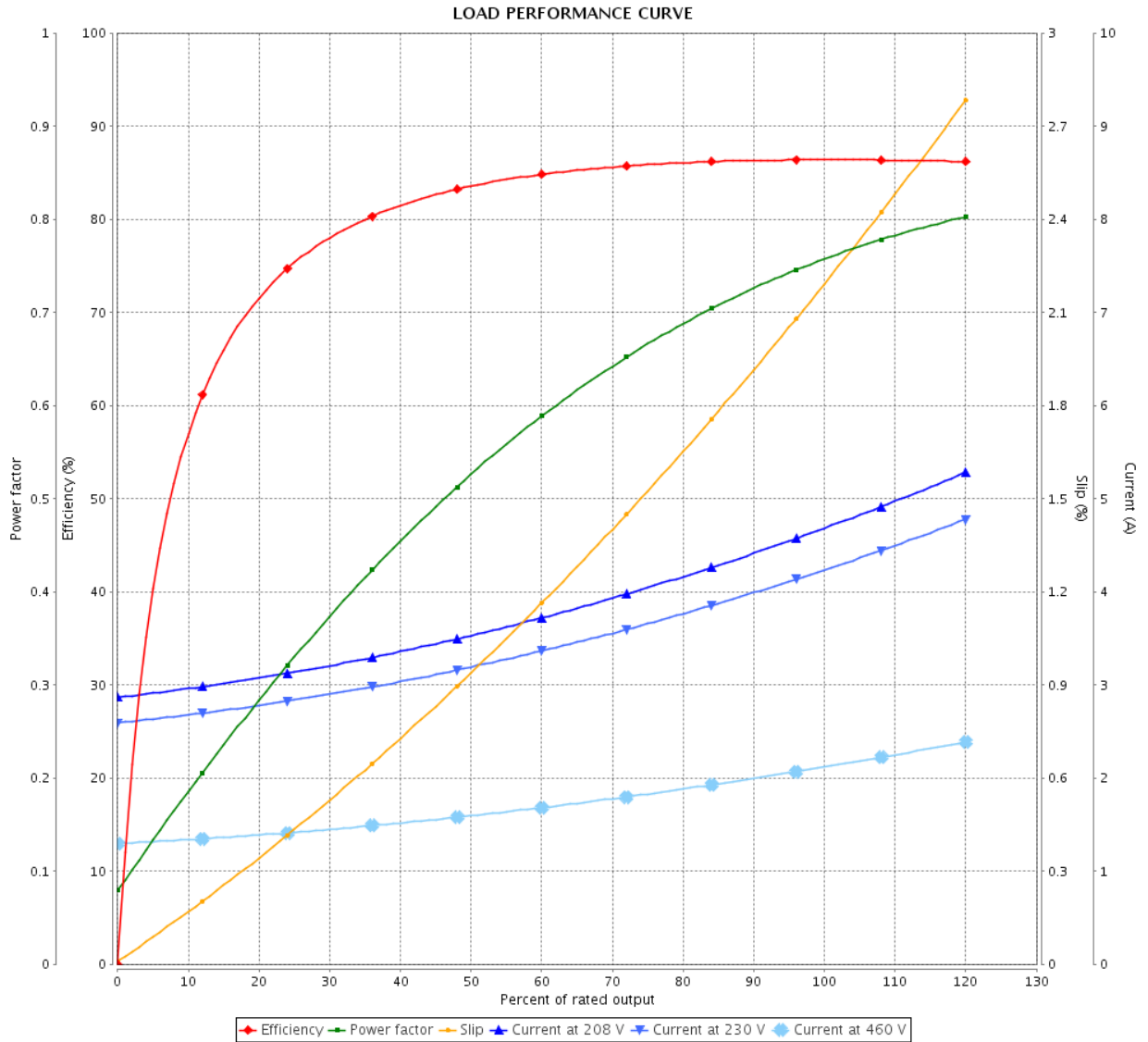
Product line : Rolled Steel Three-Phase

Product code :

12809667

Catalog # :

00158OT3E56-S



Performance : 208-230/460 V 60 Hz 4P

Rated current : 4.64-4.20/2.10 A
 LRC : 8.8
 Rated torque : 0.610 kgfm
 Locked rotor torque : 290 %
 Breakdown torque : 350 %
 Rated speed : 1760 rpm

Moment of inertia (J) : 0.0055 kgm²
 Duty cycle : Cont.(S1)
 Insulation class : F
 Service factor :
 Temperature rise : 80 K
 Design : A

Rev.	Changes Summary	Performed	Checked	Date
Performed by			Page	Revision
Checked by				
Date				

THERMAL LIMIT CURVE

Three Phase Induction Motor - Squirrel Cage



Customer :

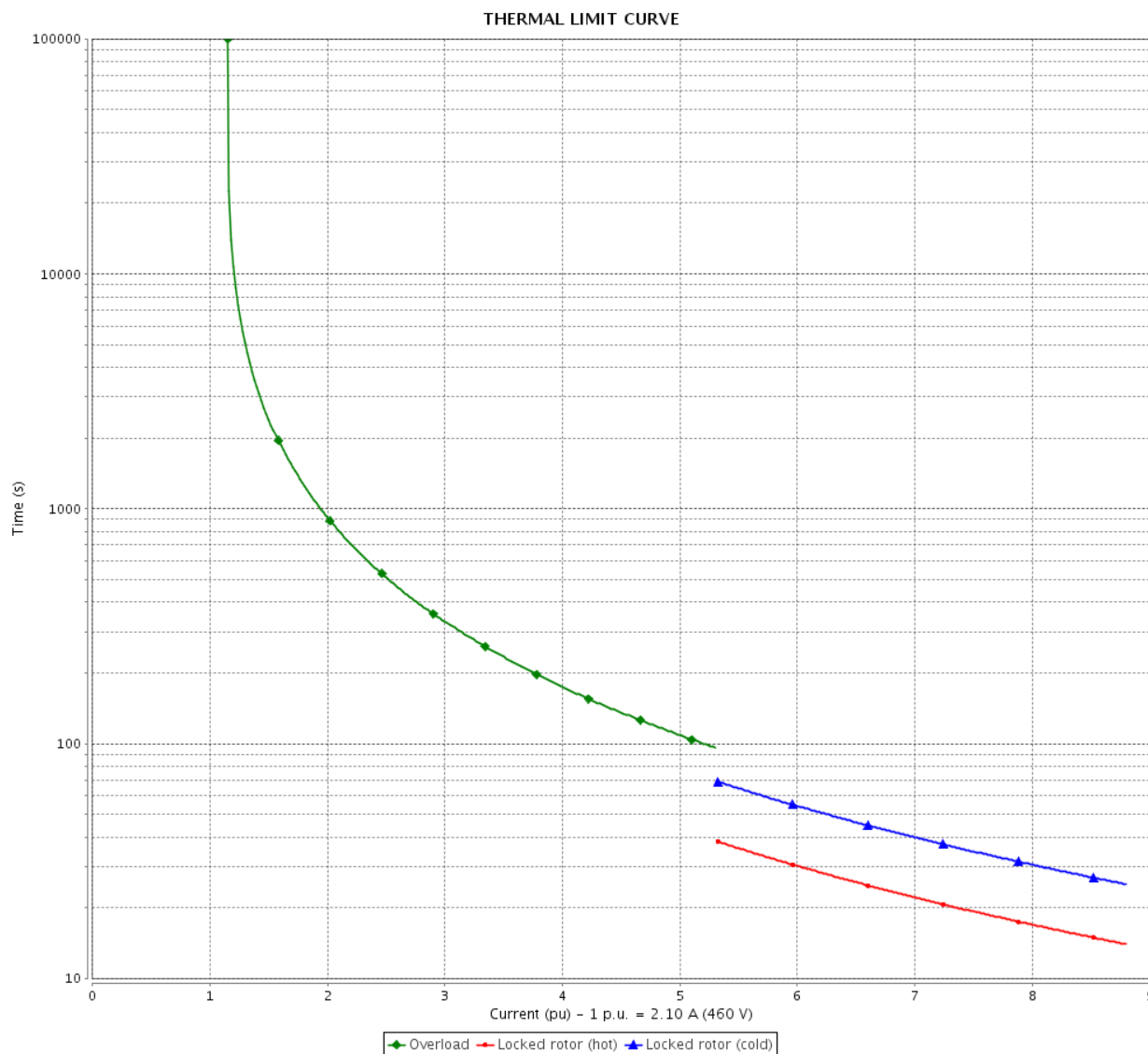
Product line : Rolled Steel Three-Phase

Product code :

12809667

Catalog # :

00158OT3E56-S



Performance : 208-230/460 V 60 Hz 4P

Rated current : 4.64-4.20/2.10 A
 LRC : 8.8
 Rated torque : 0.610 kgfm
 Locked rotor torque : 290 %
 Breakdown torque : 350 %
 Rated speed : 1760 rpm

Moment of inertia (J) : 0.0055 kgm²
 Duty cycle : Cont.(S1)
 Insulation class : F
 Service factor :
 Temperature rise : 80 K
 Design : A

Heating constant

Cooling constant

Rev.	Changes Summary	Performed	Checked	Date
Performed by			Page 4 / 5	Revision
Checked by				
Date	13/02/2019			

VFD OPERATION CURVE

Three Phase Induction Motor - Squirrel Cage



Customer :

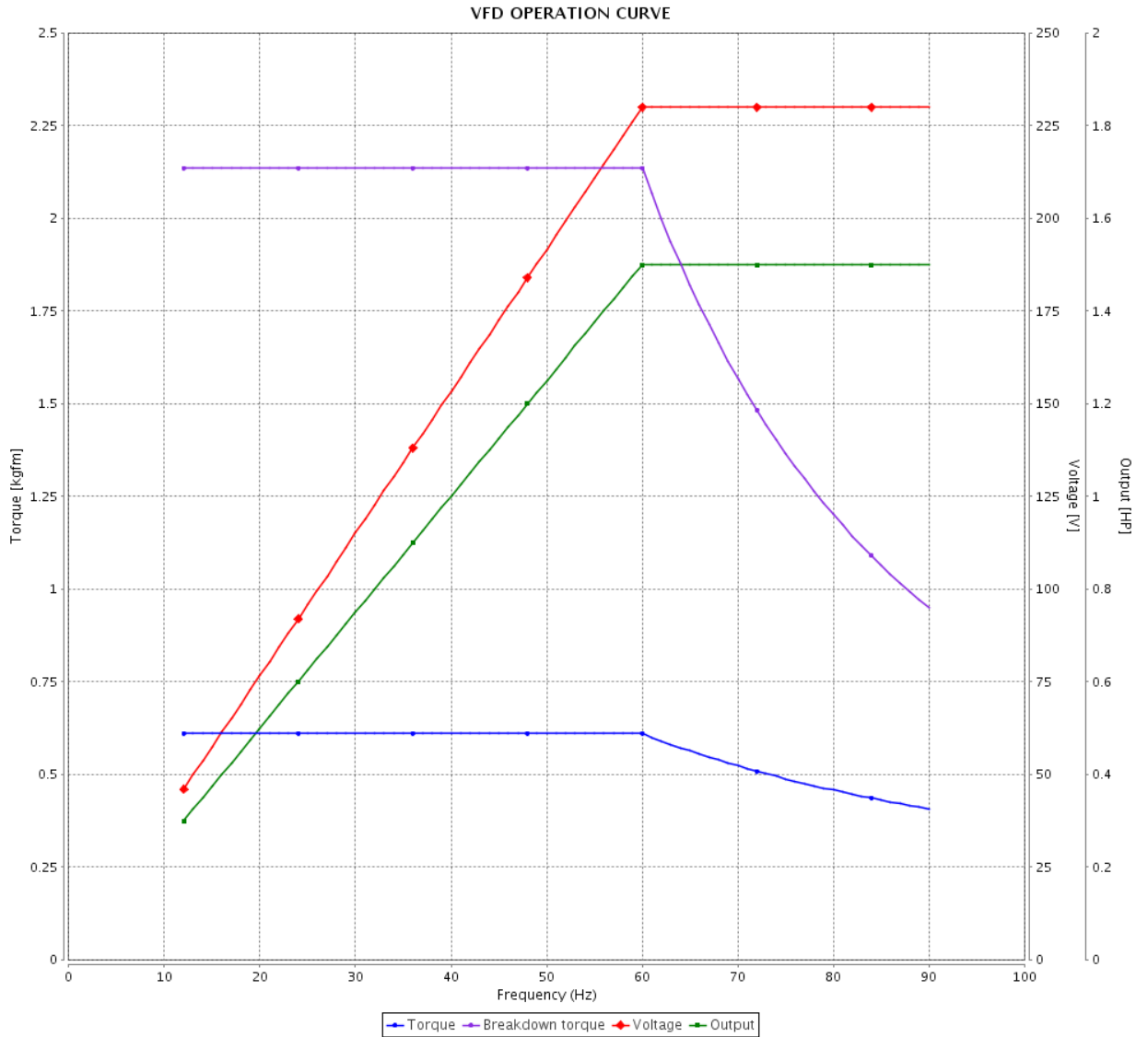
Product line : Rolled Steel Three-Phase

Product code :

12809667

Catalog # :

00158OT3E56-S



Performance : 208-230/460 V 60 Hz 4P

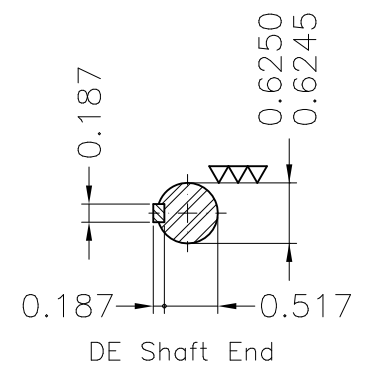
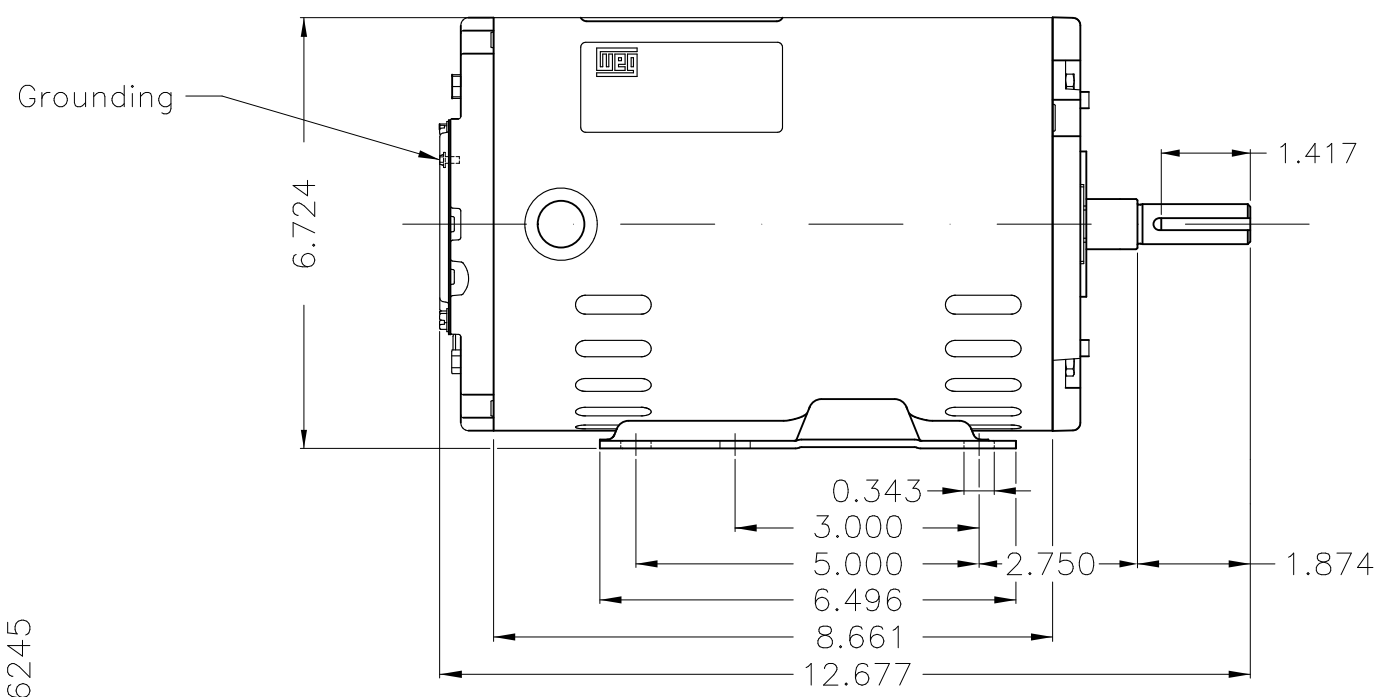
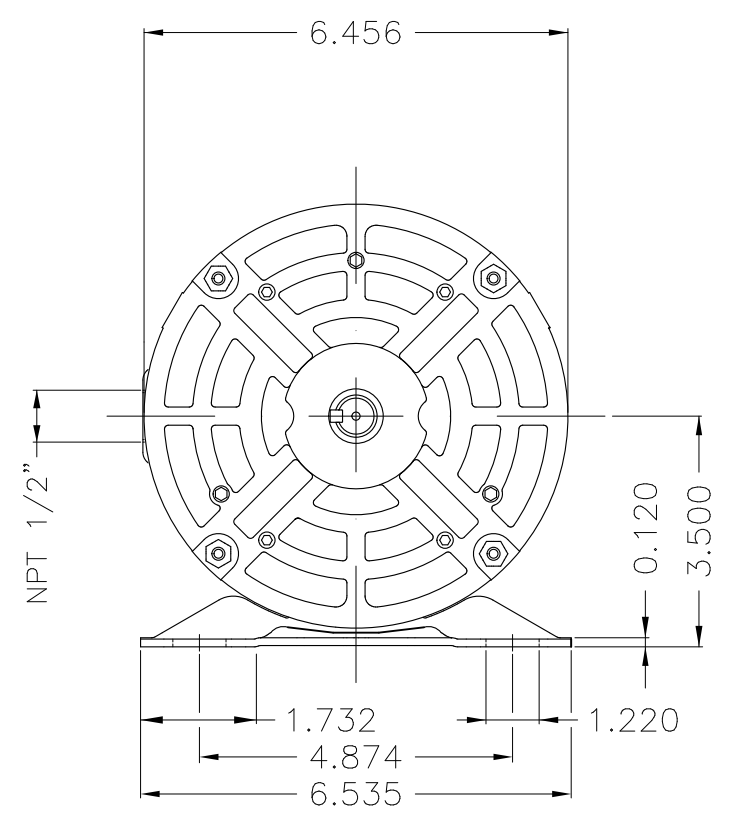
Rated current : 4.64-4.20/2.10 A
 LRC : 8.8
 Rated torque : 0.610 kgfm
 Locked rotor torque : 290 %
 Breakdown torque : 350 %
 Rated speed : 1760 rpm

Moment of inertia (J) : 0.0055 kgm²
 Duty cycle : Cont.(S1)
 Insulation class : F
 Service factor :
 Temperature rise : 80 K
 Design : A

Rev.	Changes Summary	Performed	Checked	Date
Performed by				Page 5 / 5
Checked by				
Date	13/02/2019			

Dimensões em polegada
Dimensions in inches

THIS IS AN UPDATED REVISION, THE
PREVIOUS ONE MUST BE DISREGARDED.



Without coating									
Mounting F-1/B3R(D)									
ECM	LOC	SUMMARY OF MODIFICATIONS			EXECUTED	CHECKED	RELEASED	DATE	VER
EXECUTED	USERADMIN	THREE P. MOTOR OPEN ROLLED STEEL PREM EFF							
CHECKED		FRAME 56H ODP							
RELEASED		WEG code: 12809667							
REL DT	13.02.2019	WMO	Jaragua do Sul	Product Engineering	SHEET	1 / 1			

1.5 HP 04 Poles 60Hz

A

